

# REXCEED W1100/W4100 (Japan Only)

## EDIUS 11 Nonlinear Editing Workstation



The REXCEED W1100 and W4100 are high-performance, middle range workstations with 2 TB (REXCEED W4100) or 1 TB (REXCEED W1100) of data storage and Xeon processors. In addition, these models are equipped with new EDIUS 11 Broadcast, which enables background rendering. These turnkey systems are now available for Japan.

EDIUS® turnkey workstations are positioned as a one-stop solution from Grass Valley® that provide the best out-of-box experience and peace of mind to users, without software conflicts or hardware glitches. These workstations will meet the expectations of even the most demanding workflows.

Grass Valley also provides optional commissioning, training and support beyond the initial 12-month (defects in materials and workmanship) warranty period.

### Key Features

#### Workstation

- Equipped with input/output hardware that supports SDI inputs and outputs to meet the demands of professionals
- Xeon processor (6 cores/12 threads), 16 GB RAM (W1100), 32 GB RAM (W4100)
- Storage:
  - W1100 (standalone): 1 TB M.2 SSD
  - W4100 (standalone or system integration): 512 GB M.2 SSD + 2 TB M.2 SSD
- Windows 11 Pro for Workstations (64-bit) operating system
- Multimedia slot (W4100 only): SD card x2 SDXC, UHS-II, Micro P2 support) / 2.5-inch SSD x2
- USB 3.1

#### Editing

- Editing system for mid-range productions
- EDIUS 11 Broadcast pre-installed
- Support for the latest 4K codecs: XAVC (Intra/Long GOP), XAVC S, AVC-Ultra, XF-AVC, and 1D C Motion JPEG
- Mixed editing of materials with different frame rates in real time on the same timeline is possible
- Native support for many formats: XDCAM, P2, GF, XF, CMF (Grass Valley K2 files), AVCHD, MXF, etc.

## Specifications

### OS

Microsoft Windows 11 Pro for Workstations (64-bit)

### Processor

**Core:** Single-configuration Xeon processor (6 cores)

**Thread (H/T):** 12 threads

### Memory

**Capacity:** 16 GB (W1100), 32 GB (W4100)

### Graphics Cards

NVIDIA Series

### Storage

#### W1100

– System + Data: 1 TB (M.2-SSD x1p)

#### W4100

– System: 512 GB (M.2-SSD x1p); Data: 2 TB (M.2-SSD x1p)

### Preview/Capture Board\*

#### Video Output

- 3G-SDI SMPTE ST 259/292/296/424
- 1920x1080 59.94i/50i
- 1280x720 59.94p/50p
- 720x486 59.94i
- 720x576 50i

#### Audio Output

- SDI embedded audio 16-ch

### Video Input

- 3G-SDI SMPTE ST 259/292/296/424
- 1920x1080 59.94i/50i
- 1280x720 59.94p/50p
- 720x486 59.94i
- 720x576 50i

### Voice Input

- SDI embedded audio 16-ch

### Reference Input

- Analog blackburst or HD 3-level sync

### Sound (onboard)

Realtek ALC3205-CG audio codec

### Interface

#### Display:

- Mini DisplayPort x4 (W4100)
- Mini DisplayPort x3 (W1100)

**Network:** RJ-45 (1000BASE-T) x1

**USB:** USB 3.1 Gen1 Type-A x10 (4x front, 6x rear)

**Sound:** Universal audio jack (1 front, 1 rear)

#### Media Slots:

- SD card x2 (SDXC, UHS-II, Micro P2)
- 2x 2.5-inch SSDs

### Power

**Power Supply:** AC100-240V, 50/60 Hz

**Power Consumption:** 775W max.

### Environmental

**Operating Temperature:** 5°C - 35°C (41°F - 95°F)

**Humidity Range:** 8% - 85% (non-condensing)

### Physical

**Dimensions of the main unit:** 169x445x86 mm (6.5x17.5x3.4 in.) (WxDxH) (Not including protrusions)

**Weight:** Approximately 12.0 kg (26.5 lbs.)

### EDIUS version (pre-installed)

EDIUS 11 Broadcast

### Accessories

- EDIUS keyboard 5 (USB) x1
- Japanese standard keyboard (USB) x1
- Optical scrolling mouse (USB) x1
- Power cable x1
- 3-2 position grounding conversion adapter x1
- Mini DisplayPort – DisplayPort conversion adapter x2
- Application: CD/DVD
- Information on Support Service Registration
- Workstation attachments
- Recovery USB flash drive x1

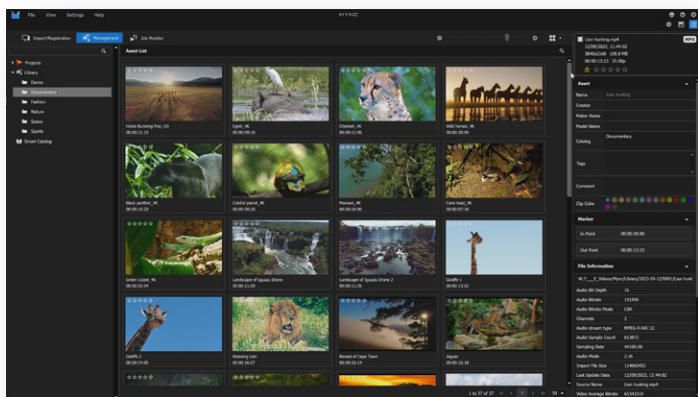
\* Note: RS-422 (VTR control terminal) is not supported. LTC input cannot be used.

### Bundled Software

Software name	Classification	Remarks
EDIUS 11 Broadcast	Video Editing Software	Installed
QuickTitrer	Title Creation Software	Installed
Mync® 11	Content Management Software	Installed

### Comparison between REXCEED W1100 / W4100

	REXCEED W1100	REXCEED W4100
Memory	16 GB	32 GB
Data Storage	1 TB (Also used for system files)	2 TB
Display Interface	Mini DisplayPort x 3	Mini DisplayPort x 4
Memory Card Reader	—	SD card x2 (SDXC, UHS-II, Micro P2), 2 x 2.5-inch SSDs



Mync Content Management Software



## Video Inputs Supported (EDIUS 11 Broadcast)

Format	Codec	Number of Bits	Container
1920x1080 60p/60i/59.94p/59.94i/50p/50i 1920x1080 30p/29.97PsF/25PsF/24p/23.98PsF 1440x1080 59.94i/50i/29.97PsF/25PsF/24p/23.98PsF 1280x720 60p/ 59.94p/50p 720x576 (4:3/16:9DVD) 50i 720x576 (4:3/16:9 DV) 50i 720x486 (4:3/16:9) 59.94i	Grass Valley HQ / Grass Valley HQX	8-bit	AVI/MXF
1920x1080 60i/59.94i/50i 1440x1080 59.94i/50i/29.97PsF/25PsF/24p/23.98PsF 720x576 (4:3/16:9DVD) 50i 720x576 (4:3/16:9 DV) 50i 720x486 (4:3/16:9) 59.94i	Grass Valley HQ / Grass Valley HQX	10-bit	AVI/MXF
1920x1080 59.94p/59.94i/50p/50i 1920x1080 29.97PsF/25PsF/24p/23.98PsF	AVC-Intra 100	8-bit	MXF/CMF (K2 Clip)
1920x1080 59.94i/50i	AVC-Intra 100	10-bit	MXF/CMF (K2 Clip)
1440x1080 59.94i/50i/29.97PsF/25PsF/23.98PsF	AVC-Intra 50	8-bit	MXF/CMF (K2 Clip)
1440x1080 59.94i/50	AVC-Intra 50	10-bit	MXF/CMF (K2 Clip)
1920x1080 59.94p/59.94i/50p/50i 1920x1080 29.97PsF/25PsF/24p/23.98PsF 1440x1080 59.94i/50i/29.97PsF/25PsF/23.98PsF 1280x720 50p 720x576 (4:3/16:9 DV) 50i 720x576 (4:3/16:9DVD) 50i	MPEG-2 Custom	8-bit	MXF
1920x1080 59.94i/50i 1440x1080 59.94i/50i 720x576 (4:3/16:9 DV) 50i 720x576 (4:3/16:9DVD) 50i	MPEG-2 Custom	10-bit	MXF
1920x1080 59.94p/59.94i/50i 1440x1080 59.94i/50i 1280x720 59.94p/50p 720x576 (4:3/16:9DVD) 50i	MPEG-2 for K2 Clip	8-bit	CMF (Grass Valley K2 Clip)
1920x1080 59.94i/50i 1440x1080 59.94i/50i 720x576 (4:3/16:9DVD) 50i	MPEG-2 for K2 Clip	10-bit	CMF (Grass Valley K2 Clip)
1920x1080 59.94p/59.94i/50i/29.97PsF/25PsF/23.98PsF 1280x720 59.94p/50p	XDCAM HD422 Compatible	8-bit	MXF/CMF (Grass Valley K2 Clip)
1920x1080 59.94i/50i	XDCAM HD422 Compatible	10-bit	MXF/CMF (Grass Valley K2 Clip)
1920x1080 59.94p/59.94i 1440x1080 59.94i/50i 1280x720 50p	XDCAM HD Compatible	8-bit	MXF/CMF (Grass Valley K2 Clip)
1920x1080 59.94i 1440x1080 59.94i/50i	XDCAM HD Compatible	10-bit	MXF/CMF (Grass Valley K2 Clip)
1920x1080 59.94p/59.94i/50i/29.97PsF/25PsF/23.98PsF 1440x1080 59.94i/50i/29.97PsF/25p/24p/23.98p 1280x720 59.94p/50p	XDCAM EX Compatible	8-bit	MXF/CMF (Grass Valley K2 Clip)
1920x1080 59.94i/50i 1440x1080 59.94i/50i	XDCAM EX Compatible	10-bit	MXF/CMF (Grass Valley K2 Clip)
1440x1080 50i	DVCPRO HD	8-bit/10-bit	AVI/MXF/CMF (Grass Valley K2 Clip)
720x486 (4:3/16:9) 59.94i 720x576 (4:3/16:9DVD) 50i	MPEG IMX	8-bit/10-bit	MXF/CMF (Grass Valley K2 Clip)
720x576 (4:3/16:9 DV) 50i	DV/DVCPRO 25/ DVCPRO 50	8-bit/10-bit	AVI/MXF/CMF (Grass Valley K2 Clip)

## Video Outputs Supported (EDIUS 11 Broadcast)

Pin	Device Format	Project Format
SDI	1920x1080 59.94p	[8-bit] 1920x1080 59.94p, [8-bit] 1440x1080 59.94p
	1920x1080 59.94i	[8-bit/10-bit] 1920x1080 59.94i, [8-bit/10-bit] 1440x1080 59.94i
	1920x1080 50p	[8-bit] 1920x1080 50p, [8-bit] 1440x1080 50p
	1920x1080 50i	[8-bit/10-bit] 1920x1080 50i, [8-bit/10-bit] 1440x1080 50i
	1920x1080 29p	[8-bit] 1920x1080 29.97p, [8-bit] 1440x1080 29.97p
	1920x1080 25p	[8-bit] 1920x1080 25p, [8-bit] 1440x1080 25p
	1920x1080 23p	[8-bit] 1920x1080 23.98p, [8-bit] 1440x1080 23.98p
	1280x720 59.94p	[8-bit] 1280x720 59.94p, [8-bit] 1280x720 23.98p, [8-bit] 1280x720 29.97p, [8-bit] 960x720 59.94p, [8-bit] 960x720 23.98p, [8-bit] 960x720 29.97p
	1280x720 50p	[8-bit] 1280x720 50p, [8-bit] 1280x720 25p, [8-bit] 960x720 50p, [8-bit] 960x720 25p
	720x486 59.94i	[8-bit/10-bit] 720x480 59.94i, [8-bit/10-bit] 720x480 29.97p, [8-bit/10-bit] 720x480 23.98p, [8-bit/10-bit] 720x486 59.94i, [8-bit/10-bit] 720x486 29.97pi, [8-bit/10-bit] 720x486 23.98p
	720x576 50i	[8-bit/10-bit] 720x576 50i, [8-bit/10-bit] 720x576 25p

### Notes

- Additional information may be included in the appendix of the user manual.
- Grass Valley does not guarantee the operation of all devices other than the accessories and optional products made by Grass Valley for various turnkey interfaces.

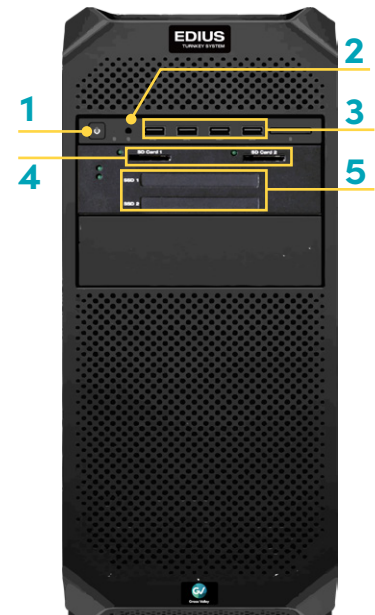
## Exterior view – Front of workstations



REXCEED W1100

1. Power Button
2. Headset/microphone jack
3. USB 3.1 Gen1 Type-A x4\*
4. SD card slot x2 SDXC, UHS-II, micro P2
5. 2.5-inch SSD slot x2

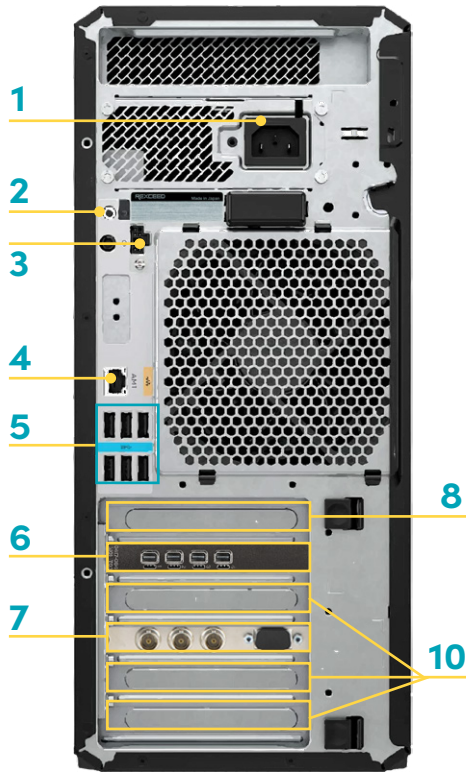
\*Note: The SD card slot on the right side of this terminal cannot be used.



REXCEED W4100

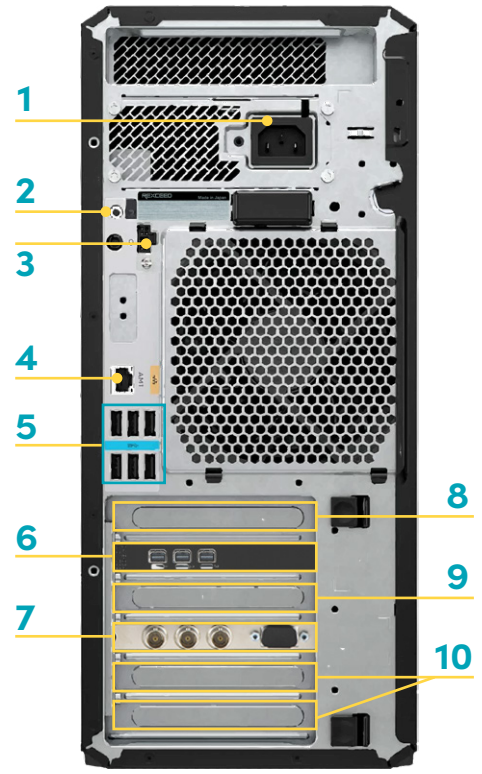


## Exterior View – Rear of Workstations



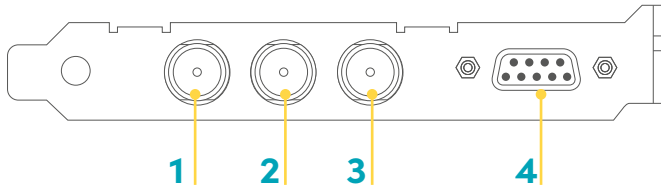
REXCEED W1100

1. Power Supply
2. Audio Lines
3. Power Button
4. 1 GbE Ethernet (RJ-45)
5. USB 3.1 Gen1 Type-A x6
6. Mini DisplayPort x4 (W4100), Mini DisplayPort x3 (W1100)
7. Preview/Capture Board
8. Not Usable
9. In Use
10. Free Slots



REXCEED W4100

## Exterior View – Preview/Capture Board



1. SDI Output Terminal (SDI OUT)
2. Reference Input Terminal
3. SDI Input Terminal (SDI IN)
4. Unused

## Ordering

### REXCEED-W4100

EDIUS 11 Turnkey REXCEED W4100 (Desktop Type)  
Sold in Japan ONLY

### REXCEED-W1100

EDIUS 11 Turnkey REXCEED W1100 (Desktop Type)  
Sold in Japan ONLY

### EWG10-DG-TK-JP

EDIUS X Downgrade for Turnkey

This product may be protected by one or more patents. For further information, please visit: [www.grassvalley.com/patents](http://www.grassvalley.com/patents)

DS-PUB-3-1055A-EN

Grass Valley®, GV®, GV Grass Valley®, and the Grass Valley logo are trademarks or registered trademarks of Grass Valley USA, LLC, or its affiliated companies in the United States and other jurisdictions. Grass Valley products listed above are trademarks or registered trademarks of Grass Valley USA, LLC or its affiliated companies, and other parties may also have trademark rights in other terms used herein. Copyright © 2024 Grass Valley Canada. All rights reserved. Specifications subject to change without notice.

[www.grassvalley.com](http://www.grassvalley.com) Join the Conversation at GrassValleyLive on [Facebook](#), [Twitter](#), [YouTube](#) and Grass Valley on [LinkedIn](#)