



grass valley

A **BELDEN** BRAND

KMX-4911

SCALABLE KALEIDO MULTIVIEWER FOR GV NODE

Quick Start Guide

M3033-9905-102

2016-04-26



www.grassvalley.com

Copyright & Trademark Notice

Copyright © 2015–2016, Grass Valley Canada. All rights reserved.

Belden, Belden Sending All The Right Signals, and the Belden logo are trademarks or registered trademarks of Belden Inc. or its affiliated companies in the United States and other jurisdictions. Grass Valley, GV Node, KMX-4911, Kaleido-X, iControl, and Densité are trademarks or registered trademarks of Grass Valley Canada. Belden Inc., Grass Valley Canada, and other parties may also have trademark rights in other terms used herein.

Terms and Conditions

Please read the following terms and conditions carefully. By using Kaleido multiviewer documentation, you agree to the following terms and conditions.

Grass Valley hereby grants permission and license to owners of Kaleido multiviewers to use their product manuals for their own internal business use. Manuals for Grass Valley products may not be reproduced or transmitted in any form or by any means, electronic or mechanical, including photocopying and recording, for any purpose unless specifically authorized in writing by Grass Valley.

A Grass Valley manual may have been revised to reflect changes made to the product during its manufacturing life. Thus, different versions of a manual may exist for any given product. Care should be taken to ensure that one obtains the proper manual version for a specific product serial number.

Information in this document is subject to change without notice and does not represent a commitment on the part of Grass Valley.

Warranty information is available from the Legal Terms and Conditions section of Grass Valley's website (www.grassvalley.com).

The SDHC Logo is a trademark of SD-3C, LLC.

Title	KMX-4911 Quick Start Guide
Part Number	M3033-9905-102
Revision	2016-04-26, 18:37

Electrostatic Discharge (ESD) Protection



Electrostatic discharge occurs when electronic components are improperly handled and can result in intermittent failure or complete damage adversely affecting an electrical circuit. When you remove and replace any card from a frame always follow ESD-prevention procedures:

- Ensure that the frame is electrically connected to earth ground through the power cord or any other means if available.
- Wear an ESD wrist strap ensuring that it makes good skin contact. Connect the grounding clip to an *unpainted surface* of the chassis frame to safely ground unwanted ESD voltages. If no wrist strap is available, ground yourself by touching the *unpainted* metal part of the chassis.
- For safety, periodically check the resistance value of the antistatic strap, which should be between 1 and 10 megohms.
- When temporarily storing a card make sure it is placed in an ESD bag.
- Cards in an earth grounded metal frame or casing do not require any special ESD protection.

Protection contre les décharges électrostatiques (DES)



Une décharge électrostatique peut se produire lorsque des composants électroniques ne sont pas manipulés de manière adéquate, ce qui peut entraîner des défaillances intermittentes ou endommager irrémédiablement un circuit électrique. Au moment de remplacer une carte dans un châssis, prenez toujours les mesures de protection antistatique appropriées :

- Assurez-vous que le châssis est relié électriquement à la terre par le cordon d'alimentation ou tout autre moyen disponible.
- Portez un bracelet antistatique et assurez-vous qu'il est bien en contact avec la peau. Connectez la pince de masse à une *surface non peinte* du châssis pour détourner à la terre toute tension électrostatique indésirable. En l'absence de bracelet antistatique, déchargez l'électricité statique de votre corps en touchant une surface métallique *non peinte* du châssis.
- Pour plus de sécurité, vérifiez périodiquement la valeur de résistance du bracelet antistatique. Elle doit se situer entre 1 et 10 mégohms.
- Si vous devez mettre une carte de côté, assurez-vous de la ranger dans un sac protecteur antistatique.
- Les cartes qui sont reliées à un châssis ou boîtier métallique mis à la terre ne nécessitent pas de protection antistatique spéciale.

Recycling

Visit www.grassvalley.com for recycling information.

Certification and Compliance

Safety of Laser Modules



This equipment may incorporate modules containing Class 1 lasers. These modules are certified by the manufacturer to comply with:

- IEC/EN 60825-1:2014 Safety of laser products

Electromagnetic Compatibility



This equipment has been tested for verification of compliance with FCC Code of Federal Regulations, Title 47, Part 15 (47 CFR 15), Subpart B, Class A, Digital Devices, Unintentional Radiators.

Note: This equipment has been tested and found to comply with the limits for a Class A digital device, pursuant to part 15 of the FCC Rules. These limits are designed to provide reasonable protection against harmful interference when the equipment is operated in a commercial environment. This equipment generates, uses, and can radiate radio frequency energy and, if not installed and used in accordance with the instruction manual, may cause harmful interference to radio communications. Operation of this equipment in a residential area is likely to cause harmful interference in which case the user will be required to correct the interference at his own expense.



This equipment has been tested and found to comply with the requirements of the EMC directive 2004/108/EC:

- EN 55022:2010 Class A radiated and conducted emissions
- EN 61000-3-2:2014 Limits for harmonic current emissions
- EN 61000-3-3:2013 Limitation of voltage changes, voltage fluctuations and flicker
- EN 61000-4-2:2009 Electrostatic discharge immunity
- EN 61000-4-3:2006+A1:2008+A2:2010 Radiated, radio-frequency, electromagnetic field immunity
- EN 61000-4-4:2004+A1:2010 Electrical fast transient/burst immunity
- EN 61000-4-5:2006 Surge transient immunity
- EN 61000-4-6:2009 Conducted disturbances immunity
- EN 61000-4-8:2010 Power frequency magnetic field immunity
- EN 61000-4-11:2004 Voltage dips, short interruptions and voltage variations immunity

Environmental Compliance

部件名称 Part name	有毒有害物质或元素 (Toxic or hazardous substances and elements)					
	铅 (Pb)	汞 (Hg)	镉 (Cd)	六价铬 (Cr6)	多溴联苯 (PBB)	多溴二苯 (PBDE)
电缆及电缆组件 Cables and cable assemblies	X	O	O	O	O	O
电路模块 Circuit modules	X	O	O	O	O	O
组装风扇 Fan assemblies	X	O	O	O	O	O

O: 表示该有毒有害物质在该部件所有均质材料中的含量均在 GB/T 26572-2011 规定的限量要求以下。

O: Indicates that this toxic or hazardous substance contained in all of the homogeneous materials for this part is below the limit requirement in GB/T 26572-2011.

X: 表示该有毒有害物质至少在该部件的某一均质材料中的含量超出 GB/T 26572-2011 规定的限量要求。

X: Indicates that this toxic or hazardous substance contained in at least one of the homogeneous materials for this part is above the limit requirement in GB/T 26572-2011.

技术条款解释：此声明所依据之数据由 Grass Valley 环境管理部门向我们的部件供应商获取。Grass Valley 公司相信此信息的正确性，但由于数据来源于公司外部，我们无法保证它的完整和准确。所有这些特性可能在未获通知的情况下更改。

Technical explanations: This statement is based on the information provided by our suppliers of components and collected through our Grass Valley's environmental management system. Grass Valley believes this environmental information to be correct but cannot guarantee its completeness or accuracy as it is based on data received from sources outside our company. All specifications are subject to change without notice.

Setting Up Your KMX-4911 Multiviewer

Welcome to the Kaleido family of multiviewers! This Quick Start Guide is designed to help you get your KMX-4911 multiviewer up and running for the first time. The following sections will guide you through the installation of a KMX-4911 system in its default configuration.

Summary

<i>Introduction</i>	1
<i>Current Limitations</i>	2
<i>Getting Organized</i>	2
<i>Step 1: Physical Setup</i>	3
<i>Step 2: Networking Setup</i>	7
<i>Step 3: XEdit Installation</i>	14

Introduction

Grass Valley's Kaleido family of multiviewers ranges from quad-splits to large-scale, multi-room monitoring systems, with outstanding image quality and signal flexibility. The Kaleido multiviewers are available in different models: the Kaleido-MX, the Kaleido-MX 4K, the Kaleido-IP, the Kaleido-X (7RU), the Kaleido-X (4RU), the Kaleido-X16, and the Kaleido-XQUAD frames, as well as the KMX-4911 cards, the Kaleido-Modular-X cards, and the Kaleido-Modular KMV-3901/3911 cards.

The **KMX-4911** multiviewer modules are part of the **GV Node** IP aggregation, processing, and edge routing platform, designed for live broadcast production. Each KMX-4911 card can display up to nine SMPTE ST 2022-6, 3Gbps, HD, or SD inputs in up to nine video windows across one or two high-resolution outputs. Combine up to four KMX-4911 cards, to configure a dual- or quad-output system supporting up to 36 inputs.

At the heart of every multiviewer system is the **Kaleido-X software**, which includes the following client applications:

- **XAdmin** is a Web client that your system administrator will use to manage the multiviewer system.
- **XEdit** is a client application used to create layouts for the monitor wall, and to configure the multiviewer, from your PC or laptop.
- The **Router Control** Software Single Bus and Matrix View applications (also part of the iRouter Router Control Software packaged with iControl Application Servers) can be used to control your multiviewer's logical sources and monitor wall destinations, via the *KX Router* logical router, or to control other logical routers configured within your multiviewer system.
- **Signal Path Viewer** opens as a standalone panel, updated in real time, showing assignment information between router sources and multiviewer inputs. Signal Path

Viewer is available for all multiviewer models, except Kaleido-IP (for which it is not relevant).

Housed in a *GVNode* frame, a KMX-4911 multiviewer system in its default configuration includes a number of layout presets. The default output head resolution is 1920 × 1080i @ 60 Hz. A single 4 RU GV Node frame can hold up to 16 KMX-4911 multiviewer cards, which can be combined into anything from 16 separate 9 × 2 multiviewer systems, to 4 expanded 36 × 4 multiviewers. The KMX-4911 is ideal for production monitoring in trucks. It integrates tightly with other Densité signal processing cards, routers and production switchers.

KMX-4911 systems are available in the following sizes: 9 × 1, 9 × 2, 18 × 2, 18 × 4, 27 × 2, 27 × 4, 36 × 2 and 36 × 4.

Current Limitations

The KMX-4911 multiviewer supports a subset of the features offered by other Kaleido-X series models. The KMX-4911 currently does not support the following Kaleido-X features:

- Alarm probing, and metadata extraction:
 - Detection of video freeze, black, luma too high conditions
 - Detection or extraction of closed captions, teletext or subtitles
 - Extraction of Dolby E metadata
 - Loudness measurement
 - Extraction of XDS metadata
- Layout, and video display:
 - Duplicated/repeated video
 - Overlapping video monitors
 - Cropping, and zooming (underscan/overscan)
 - Automatic aspect ratio adjustment based on decoded AFD/WSS information
 - Video monitors larger than 1920 × 1080 pixels
 - Display rotation
 - Custom display resolutions
- Other:
 - Discrete audio sources
 - Sending alarms via SNMP

Getting Organized

This section provides information about system requirements, and items shipped with your KMX-4911 cards.

Required Materials

Your KMX-4911 package includes the following:

- KMX-4911 cards (front and rear modules), as per order
- SFP modules, as per order, with adapter cables if required

- KMX-4911 Quick Start Guide (this document)

Note: In line with our commitment to environmental preservation, only the Quick Start Guide for your multiviewer model, and some ancillary documents (e.g., welcome letters, warranty cards) are distributed in printed form. You can obtain the latest version of the Kaleido-X User's Manual, database samples, Quick Start guides and hardware reference manuals for all multiviewer models, as well as the Release Notes, from the *Documentation Library* section of Grass Valley's website. (Refer to the *Documentation* section of the Release Notes for a complete list.) Software, drivers, and useful data are available from the *Downloads* section of the website.

In addition to the above, you will need the following (not supplied):

- Up to 4 displays
- Client PC (see below for system requirements)
- Display cables (to connect your multiviewer to displays)

System Requirements for a Client PC

A client PC or laptop meeting the following requirements is required to access the XAdmin Web client, and the other Kaleido-X client applications.

Operating system	Windows XP Professional, Windows 7, Windows 8, or Windows 8.1
Processor	Core 2 Duo at 2 GHz, or better
Memory	At least 2 GB of RAM
Disk space	At least 2 GB free

Step 1: Physical Setup

IMPORTANT

If you need to install or momentarily remove a rear module, make sure to *first remove* any cards found in the slots covered by the rear module.

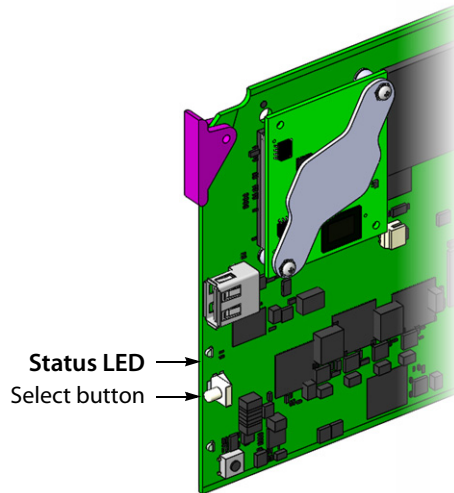
To set up the multiviewer hardware

- 1 Referring to your *GV Node Quick Start Guide*, mount your KMX-4911 multiviewer cards and their associated rear panel in the housing frame.

In the case of a rear panel covering multiple slots, make sure to install at least one card in the leftmost slot (the one with the smallest slot number). This card position is designated as *card A*, and is considered as your system's *master* card. You cannot operate a system without a master card.

Leave the frame door open so that you can monitor the cards' LEDs.

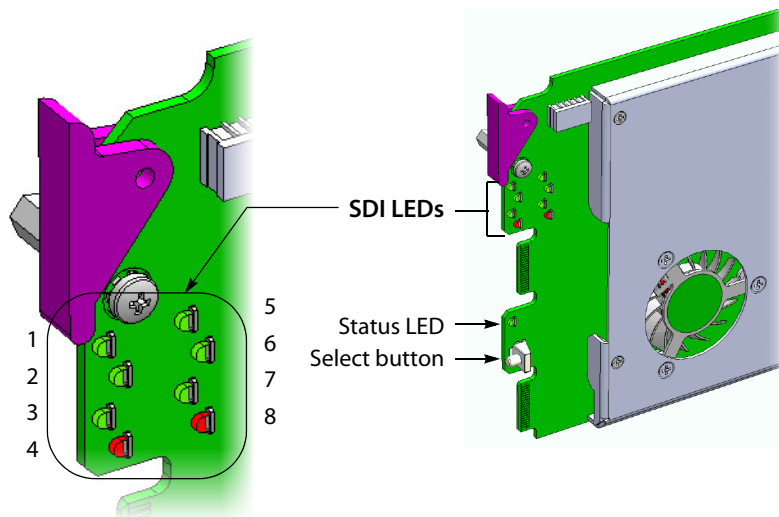
The KMX-4911 cards start up. The startup sequence takes approximately two minutes, during which time the cards' Status LED are blinking orange.



Once the startup has completed, the cards' Status LED should be green.

Green	Blinking orange	Red	Blinking red
Normal	Booting (or the card is selected for local control)	No Ethernet / SD card error	No rear / fan failure / critical temperature

- Assign a valid signal to at least one of the multiviewer inputs you wish to use. Signals are available to the multiviewer from the GV Node's internal fabric module.
- Press the Select button on the front edge of a KMX-4911 card whose inputs are assigned a valid signal, and then check that all SDI LEDs associated with the video inputs are green:



- 4 Connect a client PC, and the Kaleido-RCP2 (if available) to your network. You can also connect a mouse and a keyboard to your Kaleido-RCP2.

Notes

- The Kaleido-RCP2 is an optional device, and may not have been shipped with your KMX-4911 cards. For information on this and other options for your multiviewer system, please contact your Grass Valley sales representative.
 - You may need to upgrade your Kaleido-RCP2 devices (if available) to the latest firmware. The update file can be found in the Downloads section of Grass Valley's website. Please refer to the *Kaleido-RCP2 Guide to Installation and Operation* (available from the Documentation Library section of Grass Valley's website) for instructions on how to determine the firmware level, and how to perform the upgrade.
-

- 5 Insert your SFP modules, if any, into the SFP cages for the multiviewer outputs you wish to use.

If the *Additional head activation* option is *not* enabled, then the only available multiviewer output is MV OUT A1 (MV OUT 1, in the case of a KMX-4911 9×2 system).

By default, the KMX-4911 multiviewer uses a progressive output resolution of 1920 × 1080 @ 60 Hz.

- 6 Connect at least one output of the multiviewer to a display that supports this resolution.

Notes

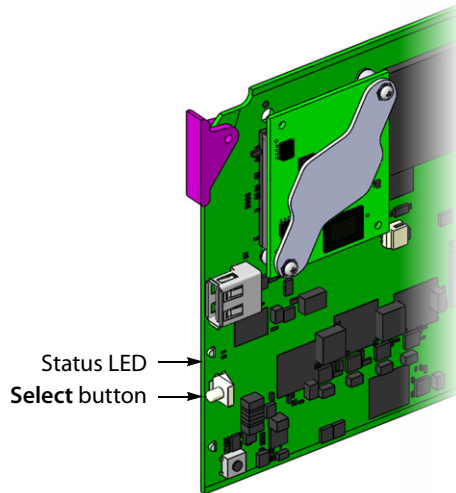
- If a KMX-4911 multiviewer card has a dual-channel transmitter WDM series SFP cartridge (part no. SFP-TT-W13W15-LC), with an FIO-991p series WDM dual receiver module, then you need to know that:
 - Head 1 is available from the FIO-991p module's SDI output B, and
 - Head 2 is available from the module's SDI output A.
 - If you connected a 1080i display, refer to *Configuring the HD-SDI Monitoring Output Format*, in the Kaleido-X User's Manual, for instructions on setting the scan format.
-

If you wish to use a different resolution, see [Changing the Output Resolution](#), below, for detailed instructions.

Changing the Output Resolution

To change a display's resolution from the GV Node frame's local control panel

- 1 Press the Select button on the front edge of the appropriate KMX-4911 card.



The Status LED on the selected card flashes orange, and the associated local menu and navigation controls appear on the frame's control panel touch display.

Note: You can navigate the menu by using the four virtual buttons on the touch display:

- Touch the [+] and [-] buttons, to navigate between menu options or between parameter values.
 - Touch SEL to access the next menu level. When a parameter value is shown on the display, modify the value by using the [+] and [-] buttons, and then touch SEL to apply the new value.
 - Touch ESC to go back to the previous menu level.
 - Once you have completed your changes, press the Select button *on the front edge of the KMX-4911 card* to exit the control menu.
-

- 2 On the local control panel, touch the [-] button, until RESOLUTION appears on the display.
- 3 Touch the SEL button.
HEAD 1 appears on the control panel's touch display.
- 4 Touch the SEL button again.
- 5 The current resolution for the display that is connected to the multiviewer's output head 1 (i.e. through the MV OUT 1 connector) appears on the display.
- 6 Touch the [+] and [-] buttons, to navigate to a suitable output resolution for your display.
- 7 Touch SEL to apply the value shown on the display.
The selected resolution is applied to the display.

Note: If the output resolution you selected is associated with a refresh rate that is different from the reference signal's refresh rate, the latter applies.

- 8 Touch ESC to return to the previous level in the local control menu.
HEAD 1 appears again on the display.

- 9 If you wish to change the resolution on the second display (if available), then touch the [-] button.
HEAD 2 appears on the display and you can repeat [step 4](#) to [step 8](#) above to verify or configure the resolution of the display that is connected to the multiviewer's output head 2 (i.e. through the MV OUT 2 connector).
- 10 When you are satisfied with the selected output resolution settings, press the Select button *on the front edge of the KMX-4911 card* to exit the control menu.

Notes

- If you do not touch any button on the GV Node frame local control panel, the CPU-ETH3 controller will revert to its normal standby mode, and the selected card's Status LED will revert to its normal operating mode, after 30 seconds.
 - If you changed a parameter from the card's control menu, but have not applied your change (you did not touch the SEL button on the local control panel), once the 30-second timeout has occurred, the parameters will be confirmed as if you had touched the SEL button.
-

Step 2: Networking Setup

For the KMX-4911 multiviewer to join a TCP/IP network, it must be configured with a system IP address, a network mask, a gateway, and a system name. In addition, a client PC must be configured to communicate with the multiviewer (see [Configuring a Client PC](#), on page 12). You must also configure any Kaleido-RCP2 units you may have ordered.

The KMX-4911 is shipped with the following default settings:

System IP address	192.168.3.30
Network mask	255.255.255.0
Gateway	0.0.0.0

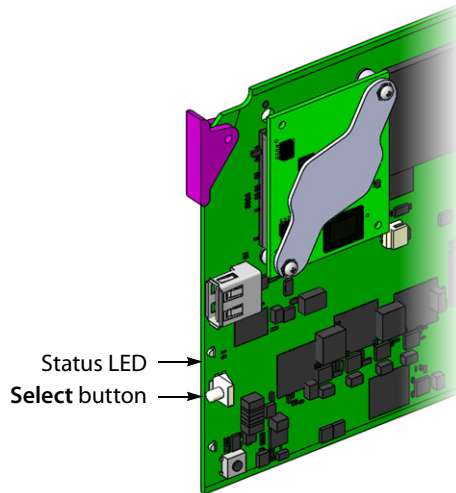
Note: If the system IP address of the multiviewer has been changed (i.e. it no longer corresponds to the as-shipped configuration), it is still possible to determine the current setting. To determine the IP address of your KMX-4911 multiviewer, see [Finding the System IP Address and Application Version](#), below.

Changing the Multiviewer's IP Address from the GV Node Control Panel

Changing the Multiviewer's IP Address

To change the IP address of a KMX-4911 multiviewer

- 1 Press the Select button on the front edge of a KMX-4911 card that belongs to the system you wish to configure.



Status LED →
Select button →

Note: You can configure a KMX-4911 system's network settings from any one of its cards. These settings are automatically replicated to the other cards.

- 2 The Status LED on the selected card flashes orange, and the associated control menu appears on the display of the GV Node frame's local control panel.

Note: You can navigate the menu by using the four virtual buttons on the touch display:

- Touch the [+] and [-] buttons, to navigate between menu options or between parameter values.
 - Touch SEL to access the next menu level. When a parameter value is shown on the display, modify the value by using the [+] and [-] buttons, and then touch SEL to apply the new value.
 - Touch ESC to go back to the previous menu level.
 - Once you have completed your changes, press the Select button *on the front edge of the KMX-4911 card* to exit the control menu.
-

- 3 On the local control panel, touch the [-] button repeatedly until NETWORK SETTINGS appears on the display, and then touch the SEL button. SYSTEM IP EDIT appears on the control panel's display.

- 4 Touch the SEL button again.

The current IP address appears on the display.

- Touch the [+] and [-] buttons, to change the current value at the current input position.
 - Touch SEL to move one position to the right.
 - Touch ESC to move one position to the left.
-

Note: Touching ESC when the input focus is in the first position returns to the previous menu level.

- 5 When the display shows the desired IP address, touch SEL to apply your change.
- 6 Touch ESC to return to the previous menu level.

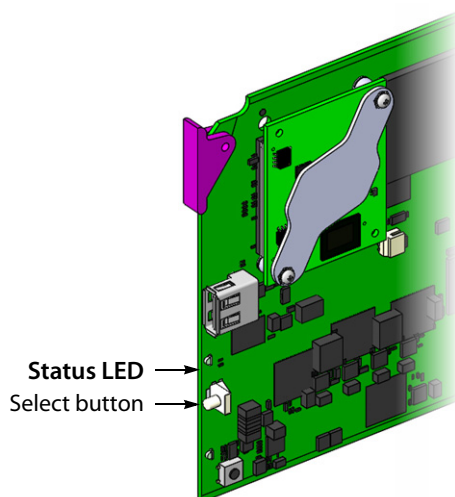
- SYSTEM IP EDIT appears on the control panel's display.
- 7 Touch the [-] button.
NETMASK EDIT appears on the control panel's display.
 - 8 Repeat [step 4](#) to [step 6](#) to configure the netmask.
 - 9 Once you have set the network mask and navigated back to the previous menu level, touch the [-] button again.
DEFAULT GW EDIT appears on the control panel's display.
 - 10 Repeat [step 4](#) to [step 6](#) to configure the gateway.
 - 11 Once you have set the gateway, press the Select button *on the front edge of the KMX-4911 card* to exit the control menu.

Notes

- If you do not touch any button on the GV Node frame local control panel, the CPU-ETH3 controller will revert to its normal standby mode, and the selected card's Status LED will revert to its normal operating mode, after 30 seconds.
 - If you changed a parameter from the card's control menu, but have not applied your change (you did not touch the SEL button on the local control panel), once the 30-second timeout has occurred, the parameters will be confirmed as if you had touched the SEL button.
-

The card restarts. The startup sequence takes approximately two minutes, during which time the Status LED is blinking orange. Once the startup has completed, the Status LED should be green.

- 12 Check the card's Status LED, and make sure that it does not indicate an error condition (see table below).



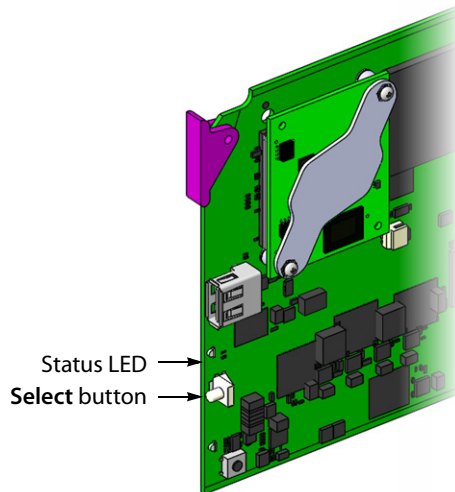
Green	Blinking orange	Red	Blinking red
Normal	Booting (or the card is selected for local control)	No Ethernet / SD card error	No rear / fan failure / critical temperature

- 13 Verify that the new IP address is effective, by referring to [Finding the System IP Address and Application Version](#), below. Perform this verification for all the cards that are connected to your system's rear module.

Finding the System IP Address and Application Version

To find the system IP address and application version

- 1 Press the Select button on the front edge of the KMX-4911 card.



The Status LED on the selected card flashes orange, and the version of the Kaleido-X Software that is running on the card (e.g. "8.00 build 2220") appears on the display of the GV Node frame's local control panel.

- 2 On the local control panel, touch the [-] button repeatedly until NETWORK SETTINGS appears on the display, and then touch the SEL button. SYSTEM IP EDIT appears on the control panel's display.
- 3 Touch the SEL button again. The current IP address appears on the display.
- 4 Press the Select button *on the front edge of the KMX-4911 card* to exit the control menu.

Using the Kaleido-RCP2 with Default Settings

Note: The Kaleido-RCP2 unit is optional and is not included in the standard KMX-4911 package.

To start using the Kaleido-RCP2 with its default settings

- 1 Physically connect the Kaleido-RCP2 unit to the network using an Ethernet cable. By default, the Kaleido-RCP2 is configured with DHCP enabled, so it will automatically be assigned an IP address by a DHCP server. If no DHCP server can be found, the

Kaleido-RCP2 will fall back to its default static IP address, subnet mask, and gateway settings:

Default IP address	10.0.3.191
Default subnet mask	255.255.0.0
Default gateway	0.0.0.0

Notes

- If you need to operate with a fixed IP address, you must use the Configuration menu to disable DHCP and set up the correct IP address, Network Mask, and Gateway (see the “Enabling or Disabling DHCP” and “Setting an IP Address, Subnet Mask and Gateway” sections in the *Kaleido-RCP2 Guide to Installation and Operation*, available from the Documentation Library section of Grass Valley’s website.)
 - To access rooms located in other subnets, the Kaleido-RCP2 must be configured with the appropriate unicast IP addresses (see the “Configuring Unicast IP Addresses” section in the *Kaleido-RCP2 Guide to Installation and Operation*, available from the Documentation Library section of Grass Valley’s website.)
-

- 2 On the Kaleido-RCP2 unit, press the ENTER button and hold it until the ESC button lights up.

The following message appears on the display:

Configuration
ROOM SELECTION

- 3 Press ENTER again to obtain the room list from the multiviewers that are currently available on the network.

The message **ROOM Select** followed by the name of the first room available appears on the display.

- 4 Press the **2** key (to move up in the list) or the **8** key (to move down the list) until **Room 1** is displayed.

- 5 Press ENTER, and then press ESC to exit the configuration menu.

- 6 Press the LOGIN button.

The following message appears on the display:

LOGIN Position
Admin

- 7 Press ENTER to log on to your system as “Admin”.

A message prompting you for a password appears on the display.

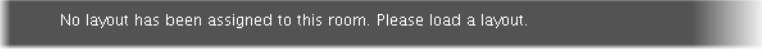
- 8 Press ENTER again (by default, there is no password).

The message “Access granted” will appear on the display if the login is successful. If a mouse is connected to the Kaleido-RCP2, then you should be able to see and move the mouse pointer on the monitor wall.

- 9 Press any of the LAYOUT PRESETS buttons to load a predefined layout on the monitor wall.

If your system was configured prior to shipment, then a layout will appear on all displays. Otherwise, a gray screen will appear with the following message in the middle:

“No layout has been assigned to this room. Please load a layout.”



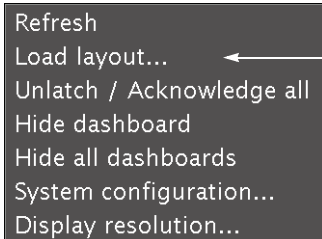
No layout has been assigned to this room. Please load a layout.

Note: To access other layouts, press the LOAD button. To assign a layout to a preset button, press and hold the button for more than six seconds while the desired layout is showing on the monitor wall.

Loading a Layout

To load a layout on the monitor wall

- 1 Connect a mouse to the Kaleido-RCP2 (if available) and log on to the KMX-4911 from the Kaleido-RCP2, if you have not already done so (see [Using the Kaleido-RCP2 with Default Settings](#), on page 10).
- 2 Right-click anywhere on the monitor wall, point to **Monitor wall** (if you clicked a monitor), and then click **Load layout** on the shortcut menu.



Monitor wall shortcut menu

A layout browser appears on the displays associated with the current room.

- 3 Select the layout you wish to load from the list of available layouts for this room, and then click **OK**.

The selected layout appears on the room displays.

Configuring a Client PC

The client PC that you will use to communicate with the KMX-4911 multiviewer (via XAdmin and XEdit) and the multiviewer itself must have IP addresses within the same subnet. The following procedure applies to a typical Windows 7 or Windows 8 system. For Windows XP, see [Changing an IP Address on Windows XP](#), on page 14.

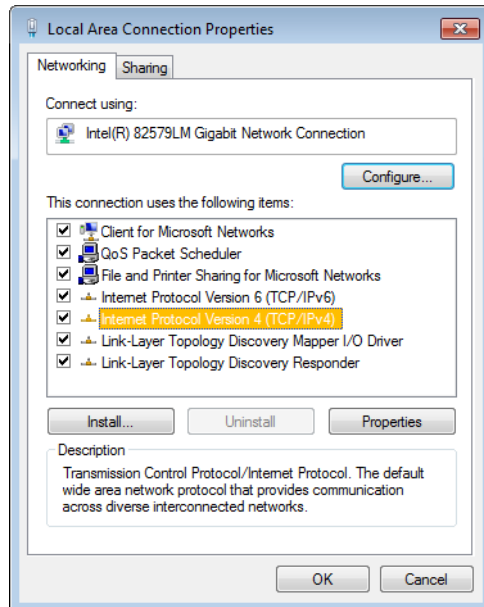
Changing an IP Address on Windows 7 or Windows 8

To change the IP address of a client PC that has Windows 7 or Windows 8

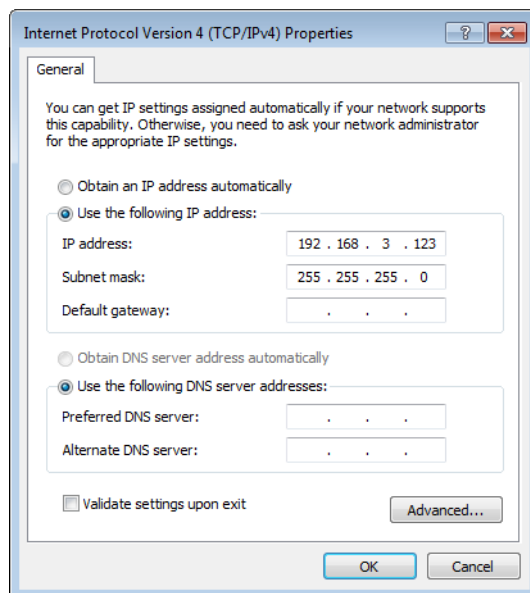
- 1 Press the Windows key on your keyboard, type “control panel” and then press Enter.
- 2 In the search box, type “adapter”, and then, under **Network and Sharing Center**, click **View network connections**.

- 3 In **Network Connections**, right-click the network adapter you wish to configure (e.g., *Local Area Connection*, or *Ethernet*), and then click **Properties**. If the system prompts you for an administrator password or confirmation, type the password or provide confirmation.

The Properties window for the selected network adapter opens.



- 4 On the **Networking** tab, under **This connection uses the following items**, click **Internet Protocol Version 4 (TCP/IPv4)**, and then click **Properties**.
The **Internet Protocol Version 4 (TCP/IPv4) Properties** window opens.
- 5 On the **General** tab, click **Use the following IP address**.



- 6 Type an IP address in the same range as the multiviewer's current IP address.

For example, if the multiviewer's IP address is 192.168.3.31, then the IP address of your client PC could be 192.168.3.123. If you are unsure, contact your network administrator.

- 7 Type a subnet mask in the same range as that of the multiviewer.
- 8 Click **OK**.
- 9 In **Local Area Connection Properties**, click **Close**.

Changing an IP Address on Windows XP

To change the IP address of a client PC that has Windows XP

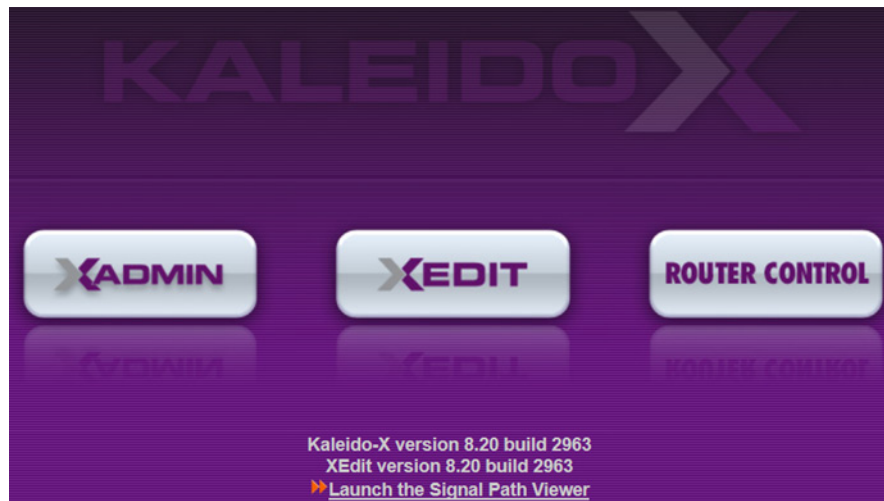
- 1 On the **Start** menu, point to **Control Panel**, right-click **Network Connections**, and then click **Open** on the menu.
- 2 In **Network Connections**, right-click **Local Area Connection**, and then click **Properties** on the shortcut menu.
- 3 In **Local Area connection Properties**, select **Internet Protocol (TCP/IP)** from the list on the **General** tab, and then click **Properties**.
The **Internet Protocol (TCP/IP) Properties** window opens.
- 4 On the **General** tab, click **Use the following IP address**.
- 5 Type an IP address in the same range as the multiviewer's current IP address.
For example, if the multiviewer's IP address is 10.0.3.70, then the IP address of your client PC could be 10.0.3.123. If you are unsure, contact your network administrator.
- 6 Type a subnet mask in the same range as that of the multiviewer.
- 7 Click **OK**.
- 8 In **Local Area Connection Properties**, click **Close**.

Step 3: XEdit Installation

XEdit is a client application used to create layouts for the monitor wall, and to configure your multiviewer system, from your PC or laptop. When the computer with XEdit is connected to the multiviewer through a TCP/IP network, you can use XEdit to modify layouts and settings directly on the multiviewer, or you can work locally on the computer and then export your changes to the multiviewer.

To install XEdit from your multiviewer's home page

- 1 From a workstation on the same subnet as the multiviewer, open a Web browser window and type the multiviewer's IP address in the address bar.
The multiviewer's home page appears.



2 Click the **XEdit** button.

The browser prompts you to save an executable file to your hard drive (Kaleido-windows32-online.exe¹). This file is an online installer, which will download XEdit and other companion elements from your multiviewer, and install them. Some browsers may allow you to run the file directly. Depending on your browser's security features, warnings may appear, which you may safely dismiss.


3 Unless your browser let you run the file (and you chose to do so), navigate to the location where you saved the installer file and open it.

More security warnings or prompts may appear, which you may safely dismiss or accept.

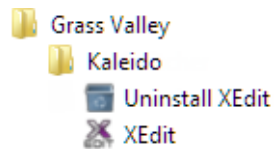
A window appears, showing the download and installation progress.



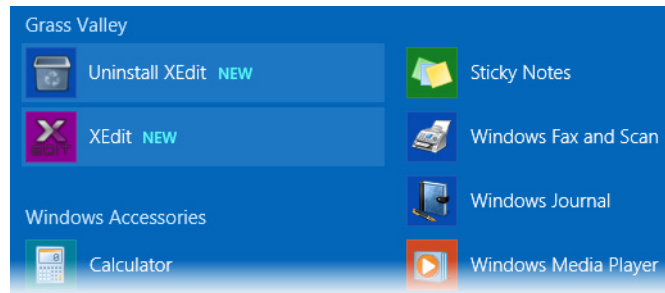
At the end of the installation process:

- If you have Windows 7, or Windows XP, shortcuts () are added to your desktop and to the Start menu (under **All Programs**).

1. Installers for Linux or Mac OS X are not yet available.



- If you have Windows 8.1, or Windows 8, XEdit will appear on your desktop, in the Apps view with all the other applications on your PC (Windows 8.1), or in your Start screen (Windows 8).



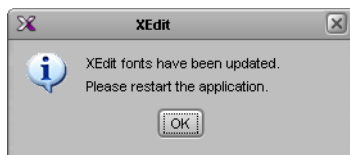
Once the installation has completed, the XEdit startup screen appears.



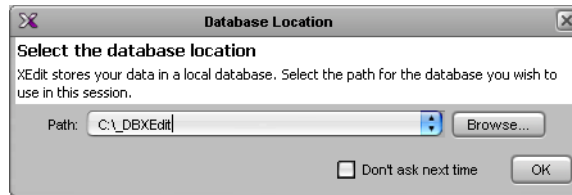
Depending on your Windows Firewall settings, a security alert may appear.

- Click **Allow access** to unblock the application.

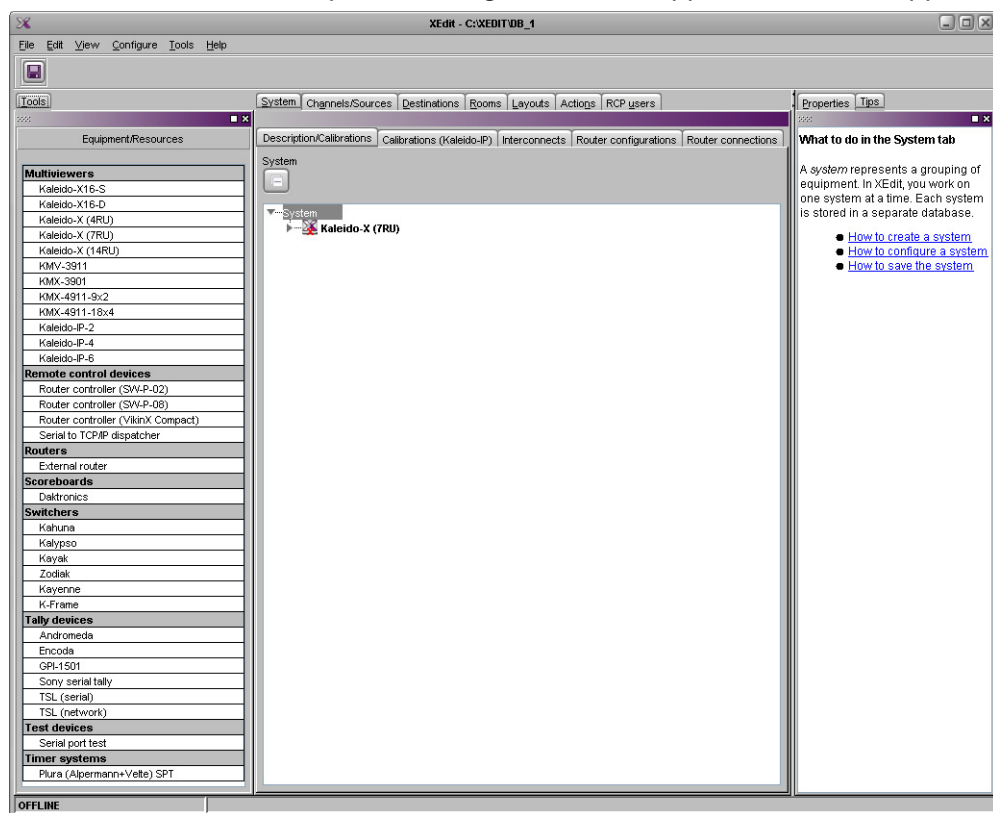
If XEdit cannot find all of the fonts it needs already on your PC or laptop, it downloads them from the multiviewer automatically, in which case a message will appear to confirm the font update, and instruct you to restart the application.




- Click **OK** to continue, and then open XEdit again, by using the shortcut on your desktop, in your Apps view (Windows 8.1) or Start screen (Windows 8), or from the Start menu (Windows 7, Windows XP).
- 4 When prompted to specify a database, choose one from the **Path** list, or click **Browse** to navigate to the database you wish to use as your local workspace, and then click **OK**.



Once the database has completed loading, XEdit's main application window appears.



Note: Once it has been installed from the multiviewer, XEdit remains on your PC or laptop, and can be launched from the  shortcut that was added to your desktop, Apps view, or Start screen (see [page 15](#)), or from the Start menu. Whenever you install a new version of the Kaleido-X software on the multiviewer, the next time you open XEdit, your installed copy of the application will be automatically updated from the multiviewer.

For more information about calibrating your system, configuring rooms, creating layouts, and operating the monitor wall, refer to the *Kaleido-X User's Manual*, available from the Documentation Library section of Grass Valley's website.



Grass Valley Technical Support

For technical assistance, contact our international support center, at 1-800-547-8949 (US and Canada) or +1 530 478 4148.

To obtain a local phone number for the support center nearest you, please consult the Contact Us section of Grass Valley's website (www.grassvalley.com).

An online form for e-mail contact is also available from the website.

Corporate Head Office

Grass Valley
3499 Douglas-B.-Floreani
St-Laurent, Quebec H4S 2C6
Canada
Telephone: +1 514 333 1772
Fax: +1 514 333 9828
www.grassvalley.com