



# **6026 Series**

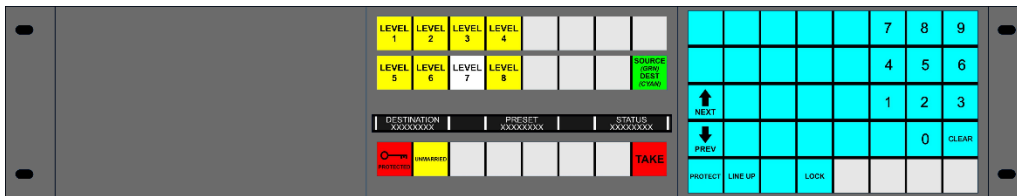
## **2U Control Panels**

# **Quick Setup Guide**

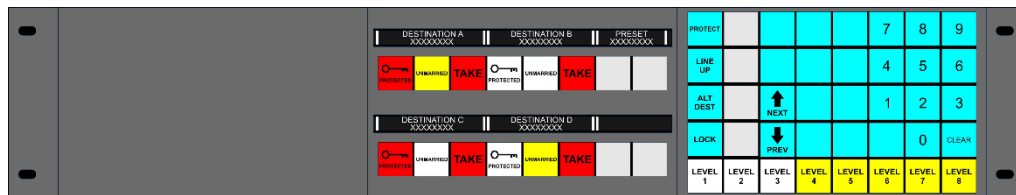
[www.grassvalley.com](http://www.grassvalley.com)

## LED Control Panels

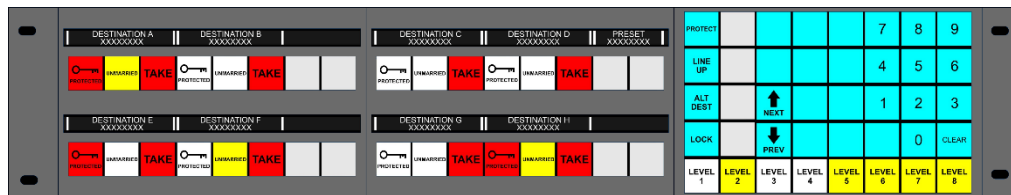
### 6026776 (6276 XY Panel Equivalent)



### 6026778 (6277 20/40 Multi-bus Panel Equivalent)

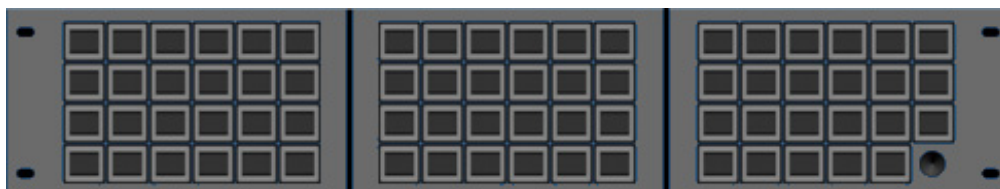


### 6026777 (6277 60/80 Multi-bus Panel Equivalent)



## LCD Control Panel

### 6026783



The LCD panel has a 64x32 pixel LCD on each key and a single rotary encoder. The LCD panel is compatible with Aurora control systems.

## Configuration and Connection

### Step 1: Select Control System

Control panel modes are set using DIP switch 6. See table below:

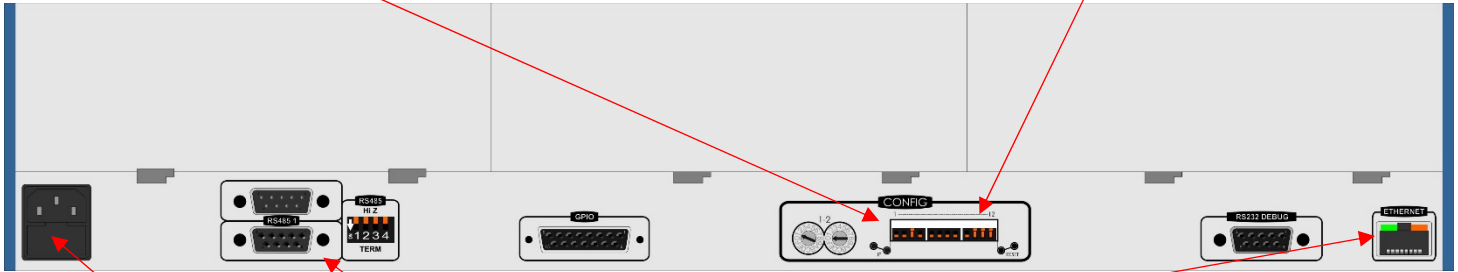
#### Step 1: Select Control System

Control panel modes are set using DIP switch 6.  
See table below

#### Step 2: Select Comms Type

Set DIP switch 10:

UP = RS485 (serial)  
DOWN = Ethernet



#### Step 3: Connect Power

Plug cable into 2A fused IEC socket

#### Step 4: Setup Comms

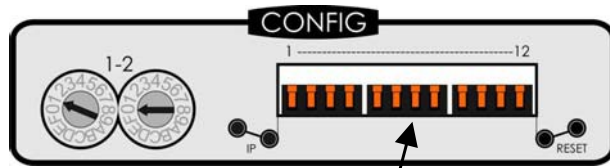
Connect the appropriate cable to a comms port (serial or Ethernet) and configure the port address

- Standard RS232/485 pinout Serial Cable
- Standard CAT-5 10/100 BASE-T straight-through or crossover Ethernet cable

## DIP Switch Configuration

**Note: DIP switches not identified below can be set either up or down.**

DIP switches configure the Control System, Communications Type, and GPIO Override.



DIP Switches

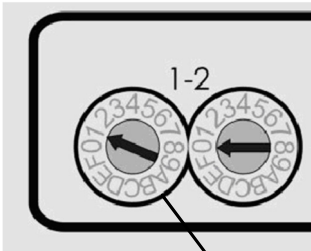
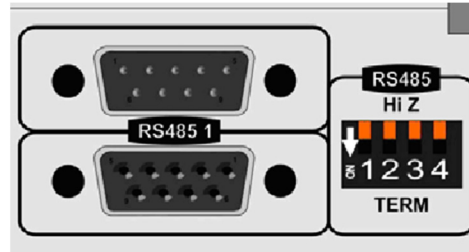
Switch	Function	Switch Position	
		Up	Down
3	GPIO—Overrider Input	Normal	Button mimic <sup>[1]</sup>
6	Control System	6026777 and 6027778 panels on a Nebula controller	All other panel types and controllers
10	Communications	RS485	Ethernet

<sup>[1]</sup> Not currently used

## Serial Comms Setup

**Note: Multi-drop address must match database configuration.**

Set DIP switches 1 and 2 down to terminate long cable runs or the end of a multi-drop chain.



Hex Switch 1 sets the multi-drop address:

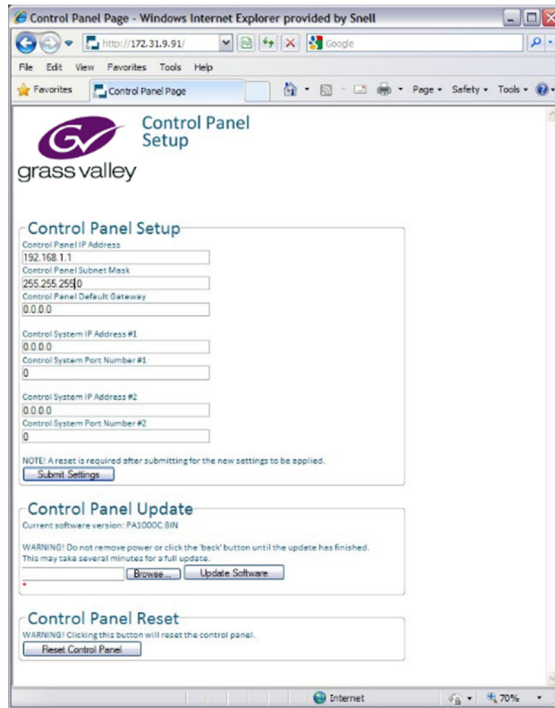
Switch	1	2	3	4	5	6	7	8	9	A	B	C	D	E	F	0
Address	1	2	3	4	5	6	7	8	9	10	11	12	13	14	15	16

## Ethernet Comms Setup

**Note: IP address must match database configuration.**

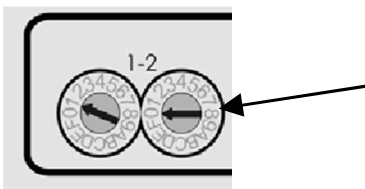
Change IP details from default values before connecting to a real network:

1. Using a PC configured to be on the same subnet as the panel default address, connect to the panel.
2. Open a web browser, type the default IP address **192.168.1.1** and press **Return**.



3. In the Control Panel Setup screen that displays in the browser, type the new control panel IP address, subnet mask, and gateway.
4. Type the Nucleus controller IP addresses and port numbers. Controller port numbers must be greater than 1024 (excluding 3000).
5. Click **Submit Settings**.
6. Click **Reset Control Panel**.

## Key Brightness



Hex switch 2 sets the brightness of the keys.  
0 = minimum brightness, through to  
7 = maximum brightness  
(Switch settings 8 - F are not used)

## Contact Information

### Grass Valley Technical Support

For technical assistance, contact our international support center, at 1-800-547-8949 (US and Canada) or +1 530 478 4148.

To obtain a local phone number for the support center nearest you, please consult the Contact Us section of Grass Valley's website ([www.grassvalley.com](http://www.grassvalley.com)).

An online form for e-mail contact is also available from the website.

### Corporate Head Office

Grass Valley

3499 Douglas-B.-Floreani

St-Laurent, Quebec H4S 2C6

Canada

Telephone: +1 514 333 1772

Fax: +1 514 333 9828

[www.grassvalley.com](http://www.grassvalley.com)