



# Encore

CONTROL SYSTEM

Salvo Editor Instruction Manual  
Software Version 2.0



Affiliate with the N.V. KEMA in The Netherlands



# CERTIFICATE

Certificate Number: 510040.001

The Quality System of:

**Thomson Inc, and its worldwide Grass Valley division affiliates DBA GRASS VALLEY**

**Headquarters**  
400 Providence Mine Rd  
Nevada City, CA 95959  
United States

15655 SW Greystone Ct.  
Beaverton, OR 97006  
United States

10 Presidential Way  
Suite 300  
Woburn, MA 01801  
United States

Kapittelweg 10  
4827 HG Breda  
The Netherlands

7140 Baymeadows Way  
Ste 101  
Jacksonville, FL 32256  
United States

2300 So. Decker Lake Blvd.  
Salt Lake City, UT 84119  
United States

Rue du Clos Courtel  
CS 31719  
35517 Cesson-Sevigné Cedex  
France

1 rue de l'Hautil  
Z.I. des Boutries BP 150  
78702 Conflans-Sainte  
Honorine Cedex  
France

Technopole Brest-Iroise  
Site de la Pointe du Diable  
CS 73808  
29238 Brest Cedex 3  
France

40 Rue de Bray  
2 Rue des Landelles  
35510 Cesson Sevigné  
France

Spinnereistrasse 5  
CH-5300 Turgi  
Switzerland

Brunnenweg 9  
D-64331 Weiterstadt  
Germany

Carl-Benz-Strasse 6-8  
67105 Schifferstadt  
Germany

Including its implementation, meets the requirements of the standard:

## ISO 9001:2008

Scope:

The design, manufacture and support of video and audio hardware and software products and related systems.

This Certificate is valid until: June 14, 2012  
This Certificate is valid as of: June 14, 2009  
Certified for the first time: June 14, 2000

H. Pierre Sallé  
President  
KEMA-Registered Quality

The method of operation for quality certification is defined in the KEMA General Terms And Conditions For Quality And Environmental Management Systems Certifications. Integral publication of this certificate is allowed.

**KEMA-Registered Quality, Inc.**  
4377 County Line Road  
Chalfont, PA 18914  
Ph: (215)997-4519  
Fax: (215)997-3809

**Accredited By:**  
ANAB

Experience you can trust.



# Encore

## CONTROL SYSTEM

Salvo Editor Instruction Manual  
Software Version 2.0

# Contacting Grass Valley

<b>International Support Centers</b>	<b>France 24 x 7</b>	+800 8080 2020 or +33 1 48 25 20 20	<b>United States/Canada 24 x 7</b>	+1 800 547 8949 or +1 530 478 4148
<b>Local Support Centers (available during normal business hours)</b>	<b>Asia</b>	<b>Hong Kong, Taiwan, Korea, Macau:</b> +852 2531 3058 <b>Indian Subcontinent:</b> +91 22 24933476 <b>Southeast Asia/Malaysia:</b> +603 7805 3884 <b>Southeast Asia/Singapore:</b> +65 6379 1313 <b>China:</b> +861 0660 159 450 <b>Japan:</b> +81 3 5484 6868		
		<b>Australia and New Zealand:</b> +61 1300 721 495	<b>Central/South America:</b> +55 11 5509 3443	
		<b>Middle East:</b> +971 4 299 64 40 <b>Near East and Africa:</b> +800 8080 2020 or +33 1 48 25 20 20		
	<b>Europe</b>	<b>Belarus, Russia, Tadzikistan, Ukraine, Uzbekistan:</b> +7 095 2580924 225 <b>Switzerland:</b> +41 1 487 80 02 <b>S. Europe/Italy-Roma:</b> +39 06 87 20 35 28 <b>-Milan:</b> +39 02 48 41 46 58 <b>S. Europe/Spain:</b> +34 91 512 03 50 <b>Benelux/Belgium:</b> +32 (0) 2 334 90 30 <b>Benelux/Netherlands:</b> +31 (0) 35 62 38 42 1 <b>N. Europe:</b> +45 45 96 88 70 <b>Germany, Austria, Eastern Europe:</b> +49 6150 104 444 <b>UK, Ireland, Israel:</b> +44 118 923 0499		

Copyright © Grass Valley, Inc. All rights reserved.  
This product may be covered by one or more U.S. and foreign patents.

## Grass Valley Web Site

The [www.grassvalley.com](http://www.grassvalley.com) web site offers the following:

**Online User Documentation** — Current versions of product catalogs, brochures, data sheets, ordering guides, planning guides, manuals, and release notes in .pdf format can be downloaded.

**FAQ Database** — Solutions to problems and troubleshooting efforts can be found by searching our Frequently Asked Questions (FAQ) database.

**Software Downloads** — Download software updates, drivers, and patches.



## END-OF-LIFE PRODUCT RECYCLING NOTICE

Grass Valley's innovation and excellence in product design also extends to the programs we've established to manage the recycling of our products. Grass Valley has developed a comprehensive end-of-life product take back program for recycle or disposal of end-of-life products. Our program meets the requirements of the European Union's WEEE Directive, the United States Environmental Protection Agency, and U.S. state and local agencies.

Grass Valley's end-of-life product take back program assures proper disposal by use of Best Available Technology. This program accepts any Grass Valley branded equipment. Upon request, a Certificate of Recycling or a Certificate of Destruction, depending on the ultimate disposition of the product, can be sent to the requester.

Grass Valley will be responsible for all costs associated with recycling and disposal, including freight. However, you are responsible for the removal of the equipment from your facility and packing the equipment to make it ready for pickup.



For further information on the Grass Valley product take back system please contact Grass Valley at + 800 80 80 20 20 or +33 1 48 25 20 20 from most other countries. In the U.S. and Canada please call 800-547-8949 or 530-478-4148, and ask to be connected to the EH&S Department. Additional information concerning the program can be found at: [www.thomsongrassvalley.com/environment](http://www.thomsongrassvalley.com/environment)



# Contents

<b>Encore Salvo Editor</b> .....	7
Introduction .....	7
Salvo Background Information .....	7
What is the Encore Salvo Editor? .....	7
Salvo Editor Features .....	7
Salvo Editor Installation .....	8
Requirements .....	8
Configure PC For The Encore Network .....	8
Installing with the Salvo Editor Installer .....	8
Installing with Encore Software Installer .....	12
Restart Encore Applications .....	12
Register Salvo Editor PC With Encore .....	12
Salvo Editor License Key Registration .....	17
Acquire Database .....	19
Salvo Editor Operation .....	21
User Interface Description .....	21
Create a Salvo .....	22
Saving A Salvo .....	25
Opening a Salvo .....	26
Deleting Salvos .....	26
Testing a Salvo with the Salvo Editor .....	27
Executing a Salvo with the Salvo Editor .....	28
Using Salvos with Control Panels .....	28
Snapshot (Capture Crosspoint) .....	28
Salvo Lock Protect Feature .....	28
Salvo Lock/Unlock Flags .....	29
Salvo Lock and Unlock Behavior .....	29
Salvo Lock/Unlock Example .....	30
Audio Attributes Feature .....	31
Offline Salvos .....	32
Importing and Exporting Databases .....	33
Salvo Editor Instruction Manual .....	36
<b>Index</b> .....	37



# *Encore Salvo Editor*

## **Introduction**

### **Salvo Background Information**

A Salvo is a named preset that, when executed, can change Sources for multiple Destinations at the same time. For example, one use of a Salvo is to set up a control room monitor wall to display a specific arrangement of Sources on the monitors for a particular show.

Salvos are generally created during Encore system configuration and saved for later use. Salvos are created in conjunction with a specific Encore database. This is necessary, otherwise the Sources and Destinations defined in a Salvo may not exist on the actual Encore system.

### **What is the Encore Salvo Editor?**

Salvo Editor is a stand-alone application that allows you to easily create Salvos for use on an Encore system. Once created, the Salvos are saved to the Encore database. Then control panels on that Encore system with Salvo capability will be able to access and execute those Salvos.

Salvo Editor is an option that is registered by entering a license key, obtained from Grass Valley Customer Service. The license key is valid for only a specific PC. An unregistered Salvo Editor operates in a trial mode limited to five elements per Salvo.

### **Salvo Editor Features**

- Spreadsheet style user interface,
- On-line or off-line Salvo creation,
- More than 300 elements per Salvo,
- Snapshots, that report the current Sources for selected Destinations,
- Execute Salvos with the Salvo Editor,
- Test Salvo, that allows the user to execute a Salvo and immediately restore the previous Source settings,
- Monitor Takes,

- Audio Attribute Takes, and
- Database import and export.

## Salvo Editor Installation

The Salvo Editor application is included on the Encore 1.7.3 Software CD.

### Requirements

Salvo Editor runs on a customer supplied PC running Windows 2000 or Windows XP. You can use the existing PC running the Encore Sharer application if you wish, or you can use a different PC (perhaps a laptop). The PC you use must be a node on the Encore network, so it will need to be configured with appropriate IP addresses.

**Note** Salvo Editor v1.1 only operates with Encore 1.7.3 or newer software.

### Configure PC For The Encore Network

1. If you have not already done so, configure the PC with IP addresses appropriate for your Encore network.

**Note** The Salvo Editor must be on the same subnet as the Sharer in order to save Salvos to the Sharer.

2. Physically connect the PC's Ethernet port to the network.

### Installing with the Salvo Editor Installer

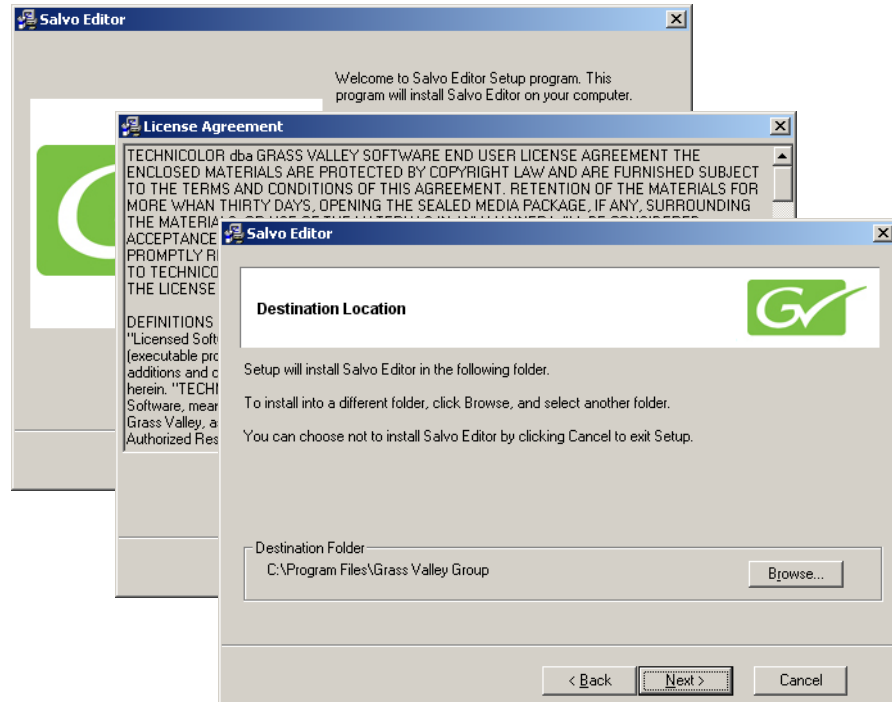
1. Close all applications on the PC, including the Sharer and System Manager if you are installing Salvo Editor on the Sharer PC.
2. **Cancel** and **Exit Setup** from the Encore Installation process.
3. Insert the Encore Software CD into the PC. The Encore Setup program will auto-launch and a Welcome screen will be displayed.
4. Click **Cancel** and **Exit Setup** to quit the Encore Setup program.
5. With the Encore Software CD still inserted in the PC, use Windows Explorer to navigate the Salvo Editor directory and double click on **Setup.exe**. This will launch the Salvo Editor Setup program and a Welcome screen will be displayed.



**Note** Clicking **Cancel** at any time exits the install program without installing the software.

6. Click **Next**, and a license agreement will be displayed. Agree to the license and click **Next**. An installation Destination screen will then be displayed (Figure 1).

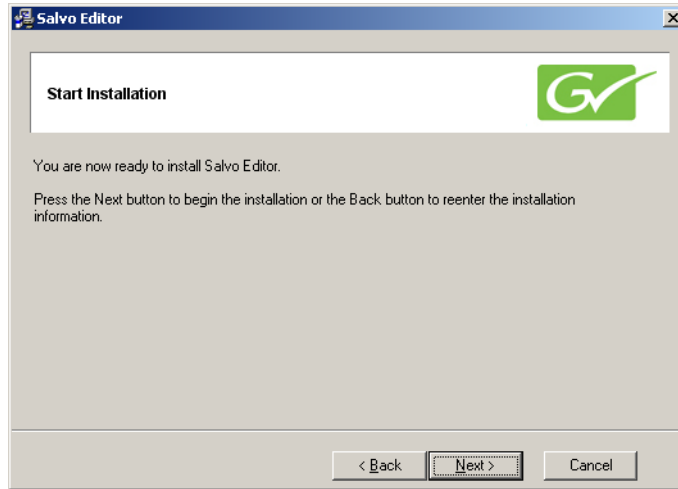
Figure 1.



7. We recommend leaving the default location selected and click **Next**. You can choose a different location with the **Browse** button if you wish, however.

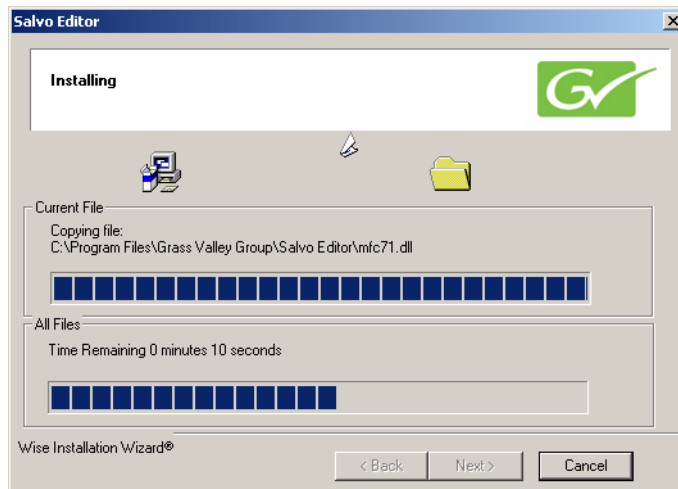
8. The Start Installation screen will then be displayed (Figure 2). Click **Next**.

Figure 2.



9. The application will then be installed onto the PC, with progress bars reporting the activity (Figure 3).

Figure 3.



10. When the installation completes, the success screen is displayed (Figure 4). Click **Finish**.

Figure 4.

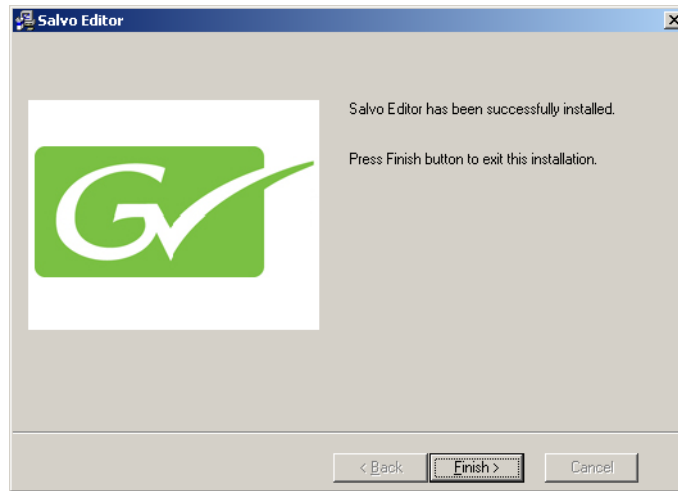


Figure 5. Salvo Editor Icon

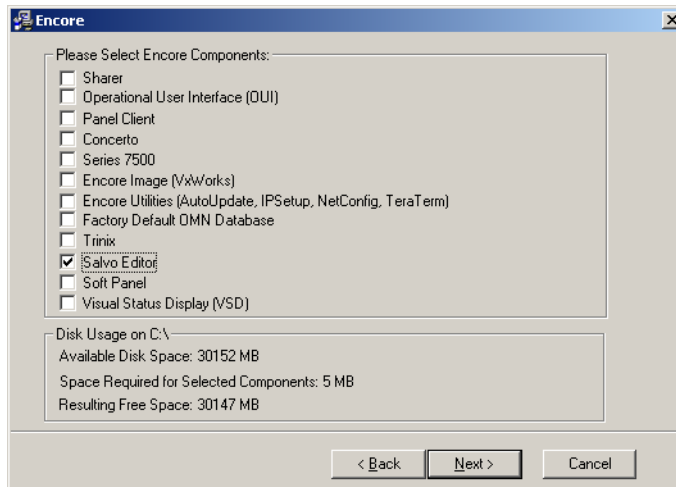


11. The Salvo Editor icon (Figure 5) will now appear on your desktop. If the default install location was used the application will also be available for launch via Start/Programs/Grass Valley Group/Salvo Editor.
12. Remove the Encore Software CD from the PC and store it in a safe place.

## Installing with Encore Software Installer

A check box for Salvo Editor is available during the Encore software installation process. You can choose to install Salvo Editor on the configuration PC along with the Encore software if you wish, or you can select only that checkbooks to install just Soft Panels (Figure 6).

Figure 6. Encore Installer Checkbooks



**Note** It is recommended that Salvo Editor be installed along with the Encore software. Installation later may result in a **Cannot update Port Mapper** error message. If this occurs, you can use Task Manager to halt that application and then install Salvo Editor.

## Restart Encore Applications

13. After Salvo Editor installation, re-start the Sharer, System Manager and Encore OUI. Run the Sharer by double clicking the Watchdog icon.

**Note** Launching the Sharer with Watchdog is required to ensure the Salvo Editor will load existing Salvos when it starts up.

## Register Salvo Editor PC With Encore

The Encore system will not recognize the Salvo Editor until the IP address of the PC running the Salvo Editor application is registered.

**Note** If the PC has already been registered with the Encore system you will not need to do this registration procedure.

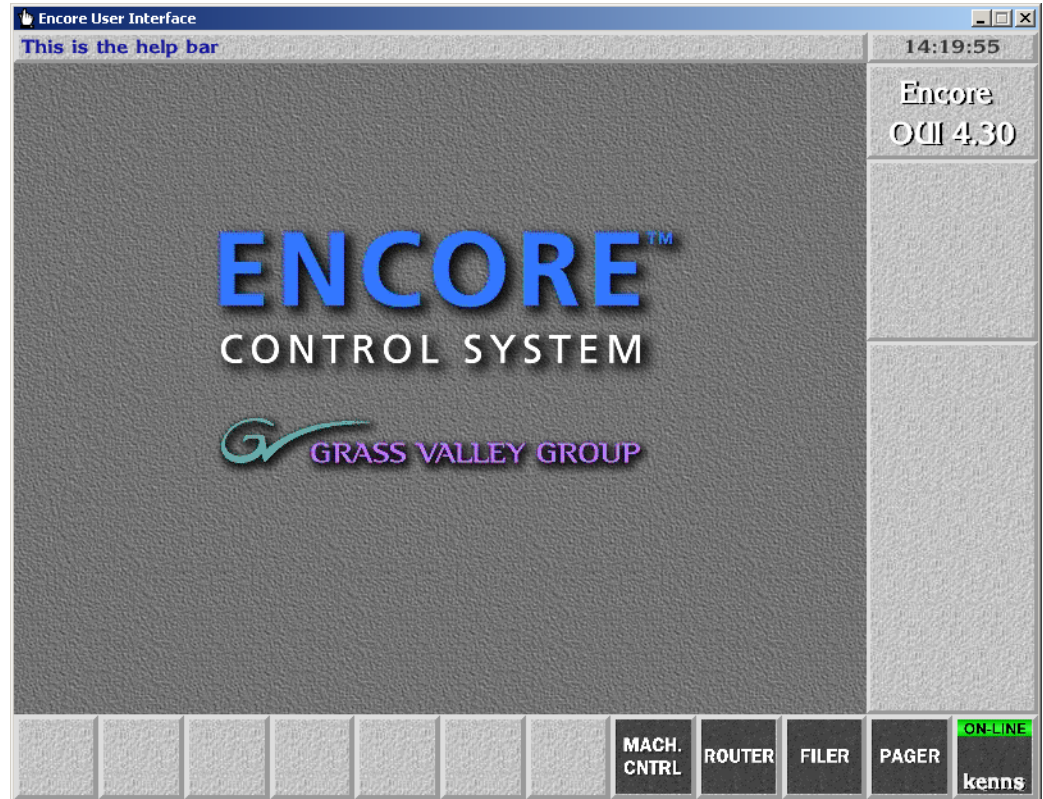
The following procedure assumes an Encore OUI has already been installed onto the PC and the necessary applications have been configured.

If this is not the case, refer to the *Encore Release Notes* and/or *Encore Configuration Manual* for specific instructions.

You will need Encore System Administrator privileges to do this registration procedure.

1. Launch the Encore OUI and login as System Administrator. Default is user SYS with no password. When logged in a screen similar to [Figure 7](#) will be displayed.

Figure 7.



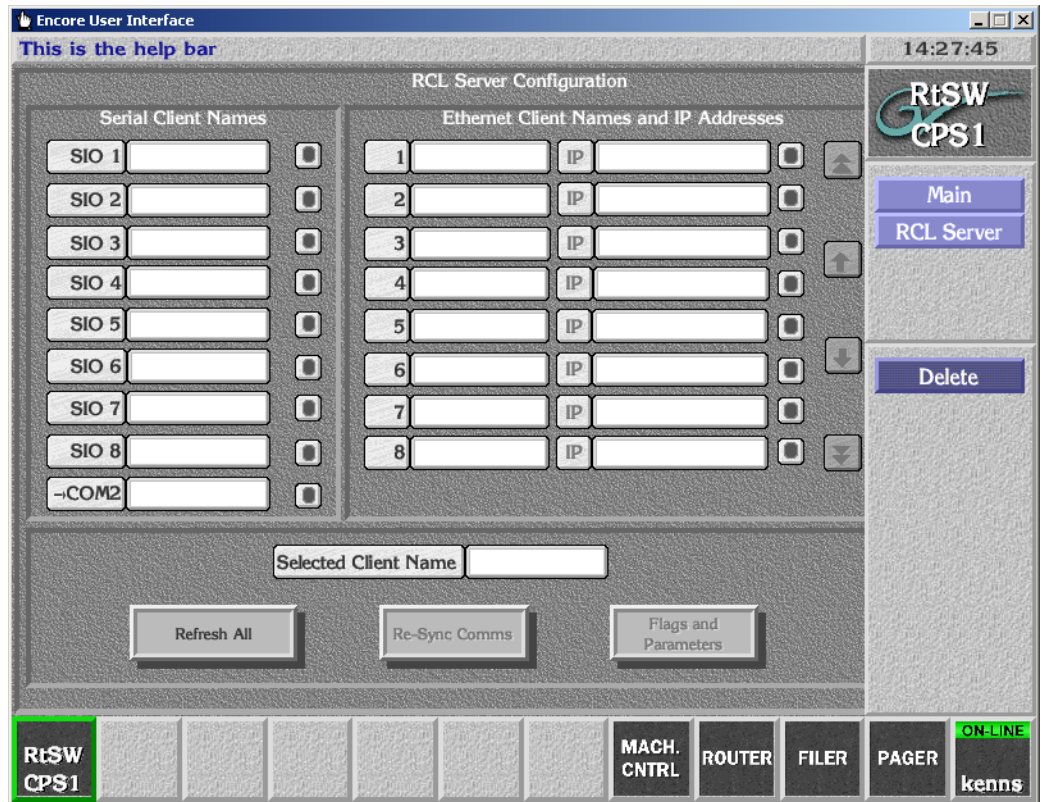
2. Click on a blank button on the lower application bar and select a **Control Panel Server** from the pop up menu. The Control Panel Server application screen will be displayed (Figure 8).

Figure 8.



3. Click on the **RCL Servers** button on the lower right to display the next screen (Figure 9).

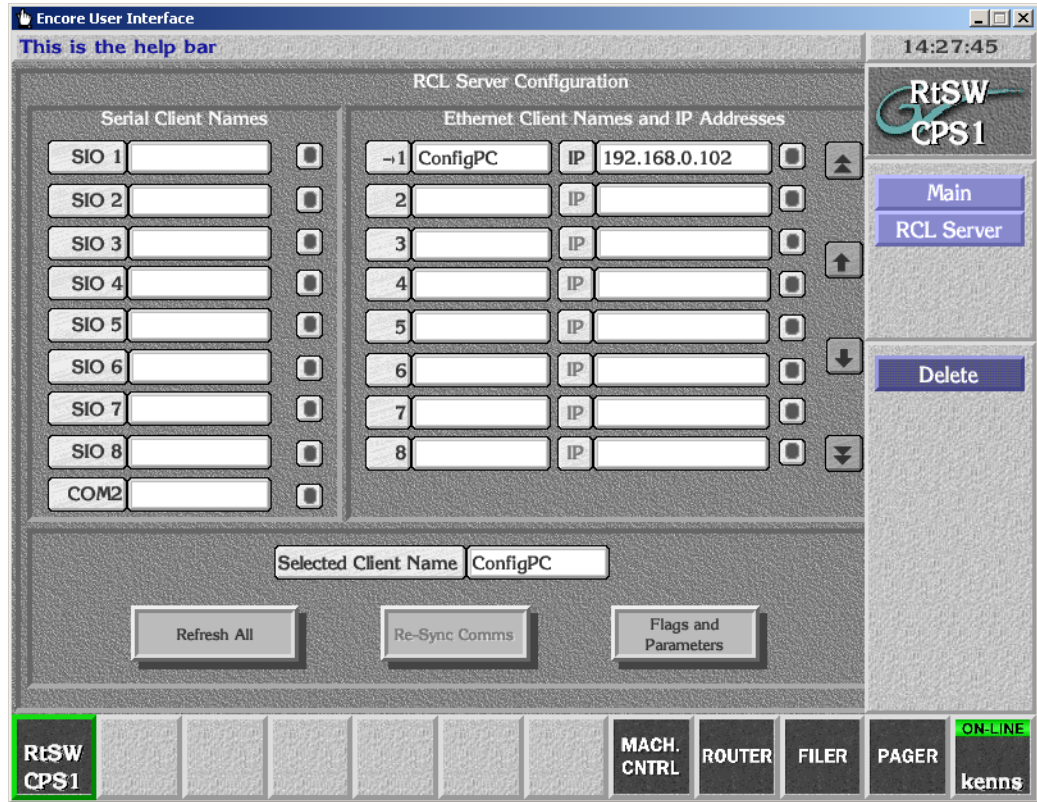
Figure 9.



4. In the right Ethernet pane, click on a number to select an item to configure. An arrow will be displayed next to the number.
5. Click on the first field and enter a name for the PC you wish to register.

- Click on the second IP field and enter the IP address of the PC you will run Salvo Editor on (Figure 10).

Figure 10.

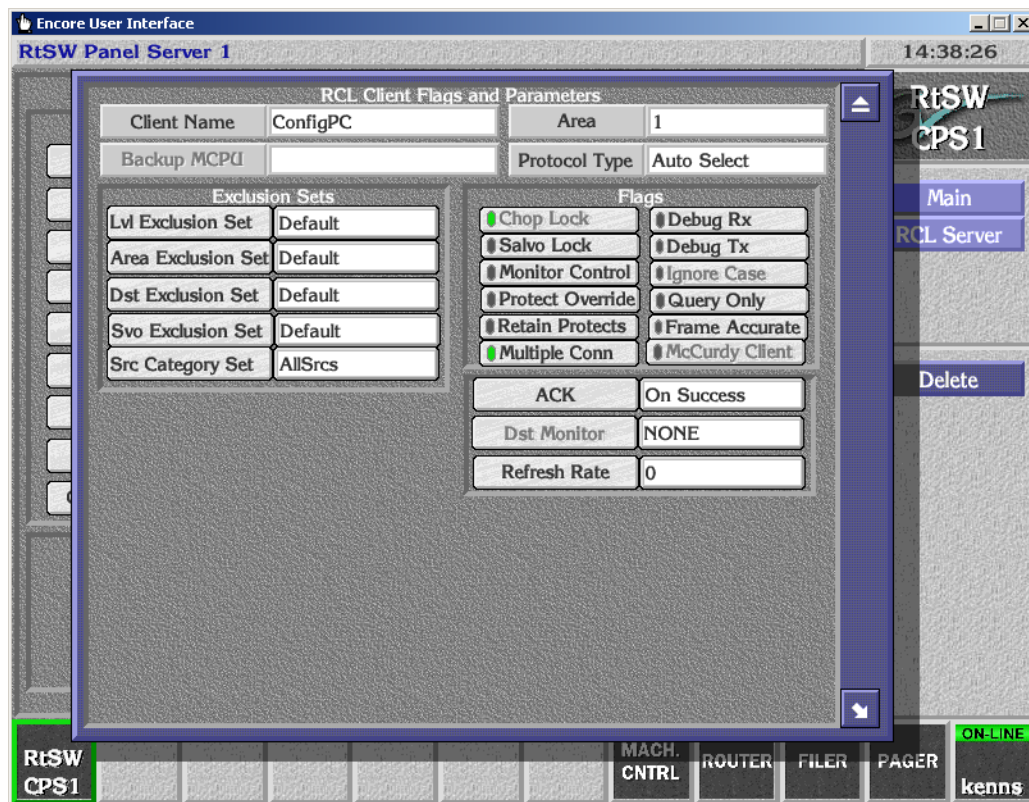


- The new setting will be saved automatically, with no need to Modify or Save the change.



8. If you need to connect multiple clients at the same time from the same PC, (for example, both Salvo Editor and VSD) click **Flags and Parameters** and click the **Multiple Conn** flag so it is green (Figure 11). If this flag is not enabled, when the other client connects the existing client will be dropped.

Figure 11.



**Note** Salvo Editor requires a Protocol Type of either the default **Auto Select** (recommended) or **RCL Protocol**.

9. Click **Main** and disconnect the Panel Server application.

The Salvo Editor application will now be recognized by the Encore system when it is launched and connected to the Encore Panel Server. Initially it will operate in Trial mode (limited to 5 elements per Salvo). License registration fully enables the Salvo Editor application.

## Salvo Editor License Key Registration

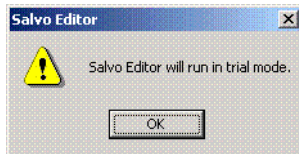
Each license key is valid for an individual PC, and is generated based on the Device ID of that specific PC. You will need to determine the Device ID of your PC and provide that exact number to Grass Valley Sales. They will

then generate the key and send it to you. Entering this key into Salvo Editor will activate full functionality on that PC.

The complete procedure to register your Salvo Editor consists of the following steps:

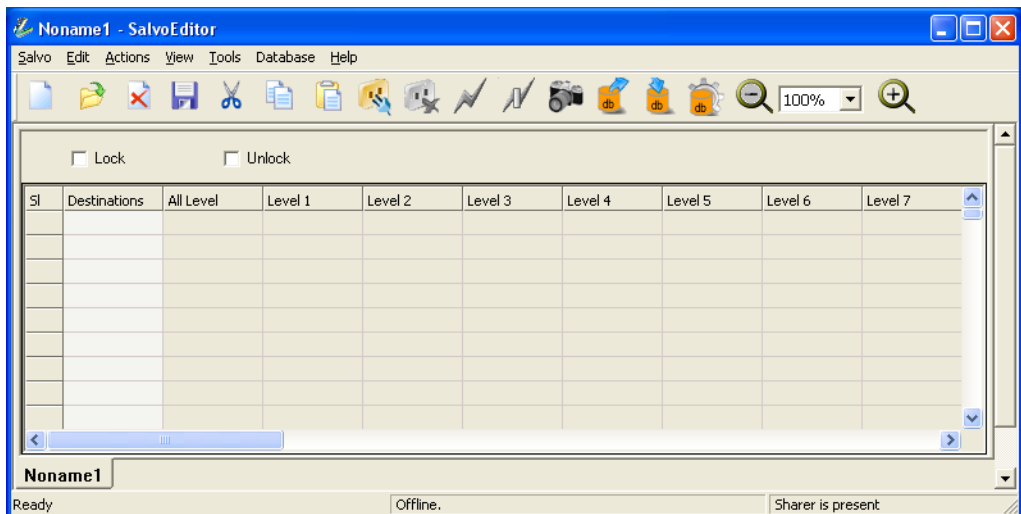
1. Click on the Salvo Editor desktop icon to run the Salvo Editor. If not licensed the following prompt message appears (Figure 12).

Figure 12.



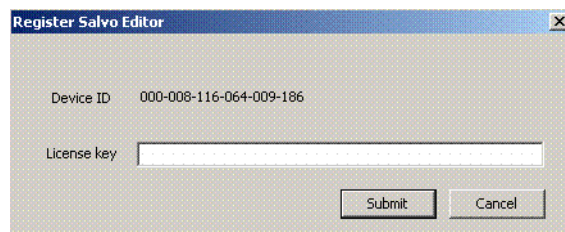
2. Click **OK**. A blank Salvo Editor spreadsheet is displayed (Figure 13).

Figure 13.



3. Click on **Help/Enter License Key** and note the Device ID displayed (Figure 14).

Figure 14.



4. Contact Grass Valley Sales by email or phone (refer to the back of the title page of this manual for the current contact methods) and provide the exact Device ID number. After your purchase has been confirmed, a License Key will be generated and sent to you.

**Note** You can use the Salvo Editor in Trial Mode (5 element Salvo limit) until you receive your license key. Go to [Acquire Database on page 19](#).

5. Enter the license key text exactly (including dashes) in the field displayed and click **Submit**. If the key is entered correctly and matches the Device ID it will be accepted and the following accepted license message will be displayed ([Figure 15](#)).

Figure 15.

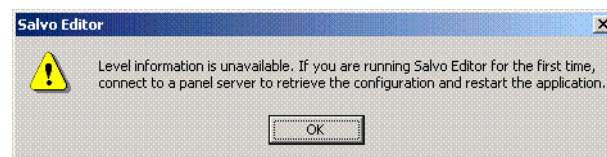


6. Click **OK**. Your copy of Salvo Editor is now fully operational (unlimited elements in a Salvo).

## Acquire Database

1. Click on the Salvo Editor desktop icon to run the Salvo Editor, if it is not already running.
2. Salvo Editor looks for the Encore data base file, which it requires for operation. The first time the Salvo Editor is launched a Panel Server message will be displayed ([Figure 16](#)), indicating a database has not been acquired.

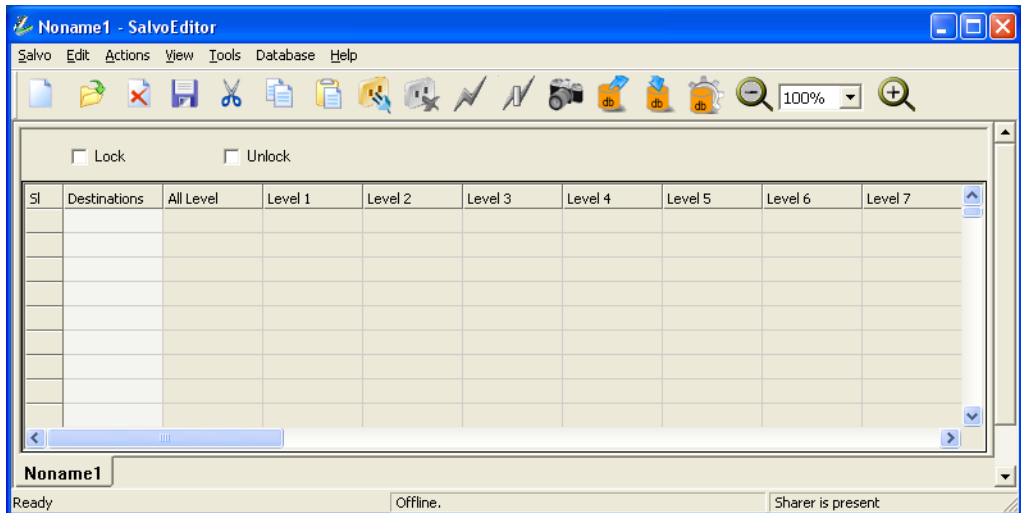
Figure 16.



3. Click **OK**. A blank Salvo Editor spreadsheet will be displayed. The Salvo Editor will search for the Sharer automatically and report **Sharer is present** if the sharer is found. This status appears at the right side of the status bar, if it is displayed ([Figure 17](#)).

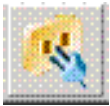
**Note** The status bar can be displayed or hidden with the **Status Bar** setting in the **View** drop down menu.

Figure 17. Status Bar Reporting Sharer Connection



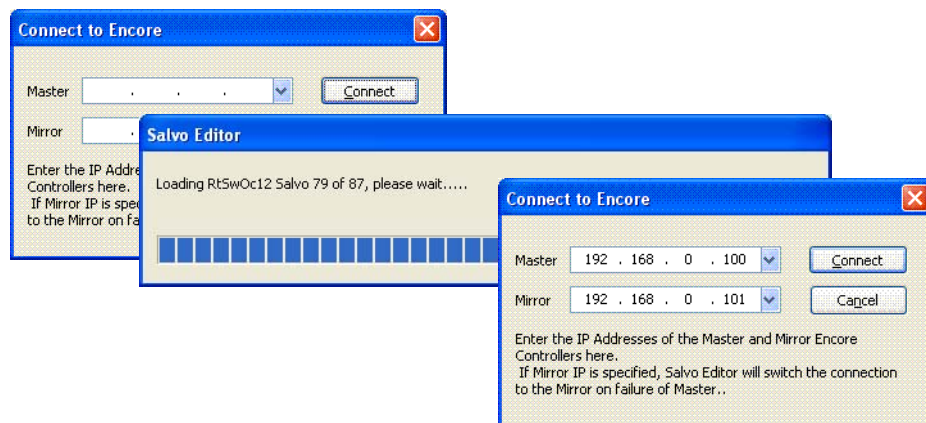
**Note** If the Sharer is not found you must resolve the problem before you can use Salvo Editor. Make sure the Sharer is running and, if it is not on the PC running Salvo Editor, that it is accessible over the network.

Figure 18. Connect Icon



4. Select **Action/Connect to Encore**, or click on the Connect icon (Figure 18).
5. A Connect to Encore pane appears. Type in the IP addresses of the primary and, if present, secondary Encore SCBs (Figure 19), then click on **Connect**.

Figure 19.



6. When connected, the status bar (if present) at the bottom of the Salvo Editor screen reports **Retrieving Salvos from Panel Server Completed**. You will now be able to access Encore Destinations and Sources by their names.

Your copy of Salvo Editor can now be used to create, edit, test, execute, and save Salvos.

## Salvo Editor Operation

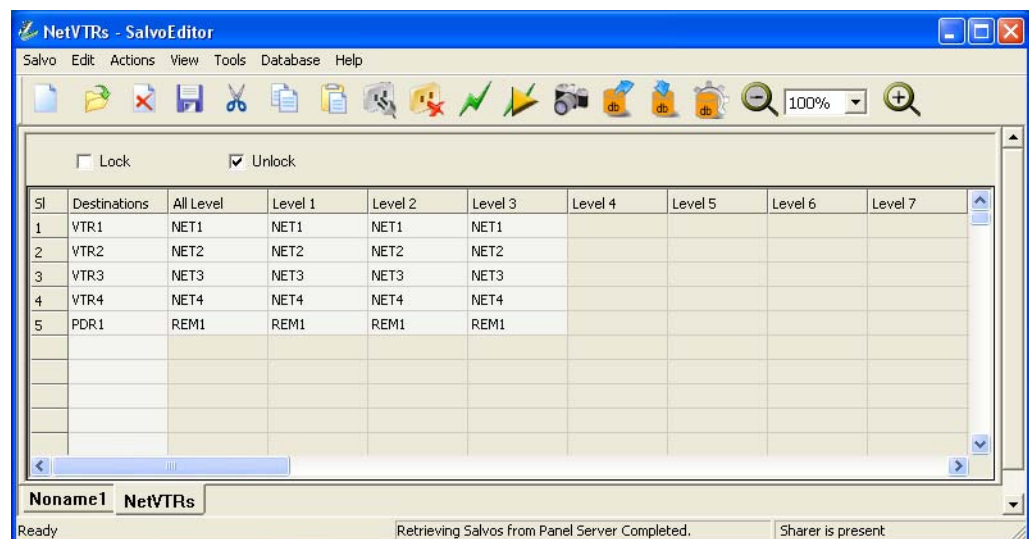
### User Interface Description

The Salvo Editor uses a spreadsheet design. The normal Windows conventions of selecting cells by clicking and shift-clicking are supported. Right clicking opens selection panes, and ranges of items can be selected and assigned quickly and easily.

At the top of the Salvo Editor screen are drop down menus and a tool bar with icons for various functions, with Lock and Unlock check boxes below.

Columns for Destinations and Levels are arranged Left to Right. Clicking on cells allow the assignment of items. Sources to be routed to the Destination Levels of the current Salvo being edited are shown in the spreadsheet cells. [Figure 20](#) shows a representative Salvo.

Figure 20.



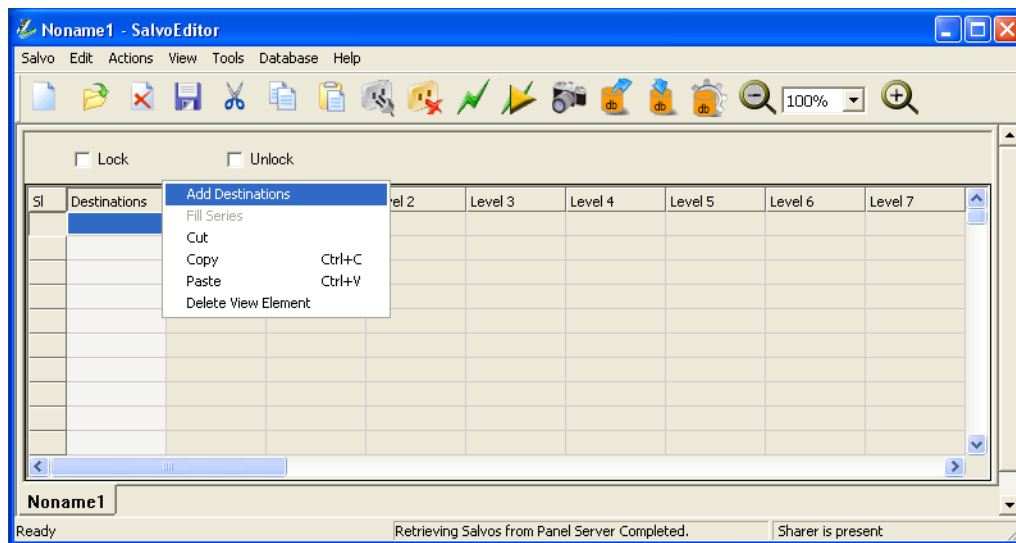
## Create a Salvo

The steps below demonstrate how to create a simple Salvo of five Destinations. Using variations of these techniques allows you to create and save any desired Salvo.

**Note** For optimum performance, salvos should contain less than 512 destinations. Larger salvos are supported, but execution and loading times may be excessive.

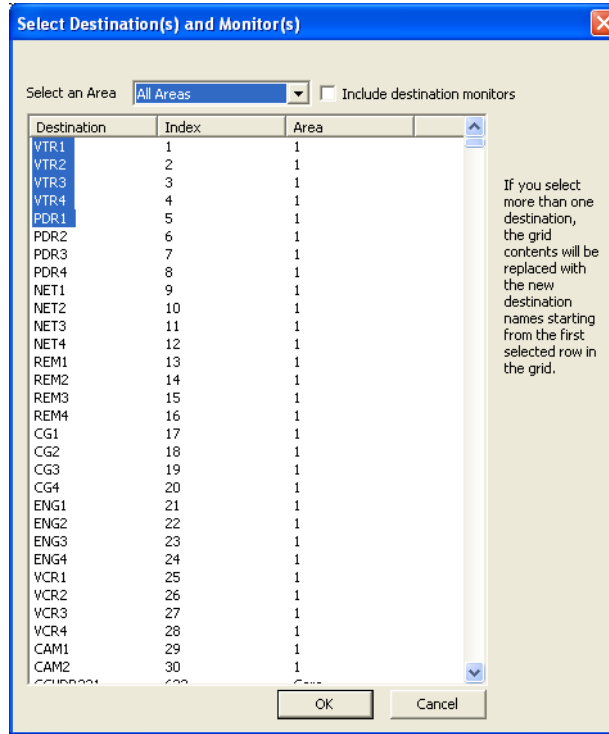
1. Right click on the top Destinations cell of the spreadsheet, and choose **Add Destinations** from the menu (Figure 21).

Figure 21.



2. A Select Destinations pane appears. Select a range of Destinations (Figure 22).

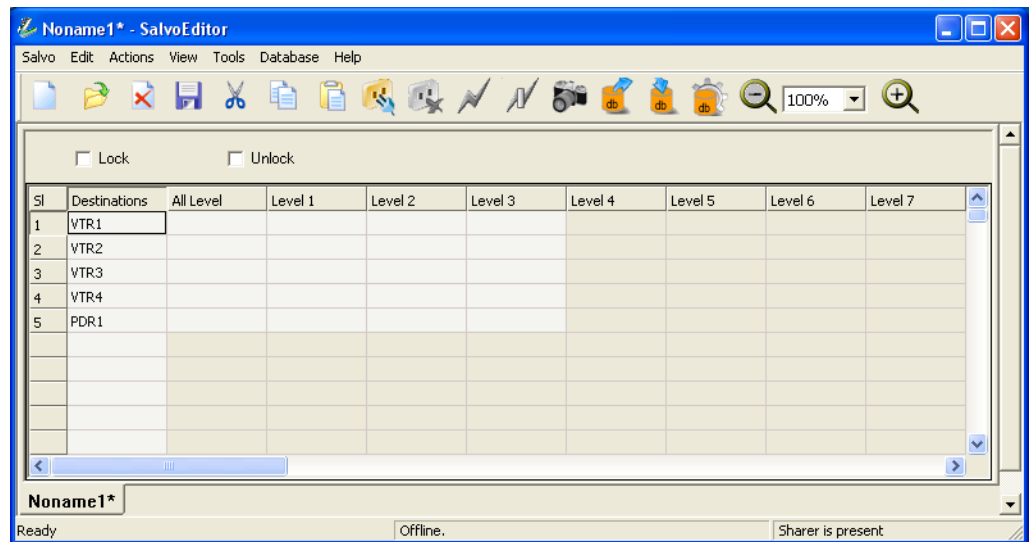
Figure 22.



**Note** If want Destination Monitors to appear on the list, click the **Include destination monitors** checkbox.

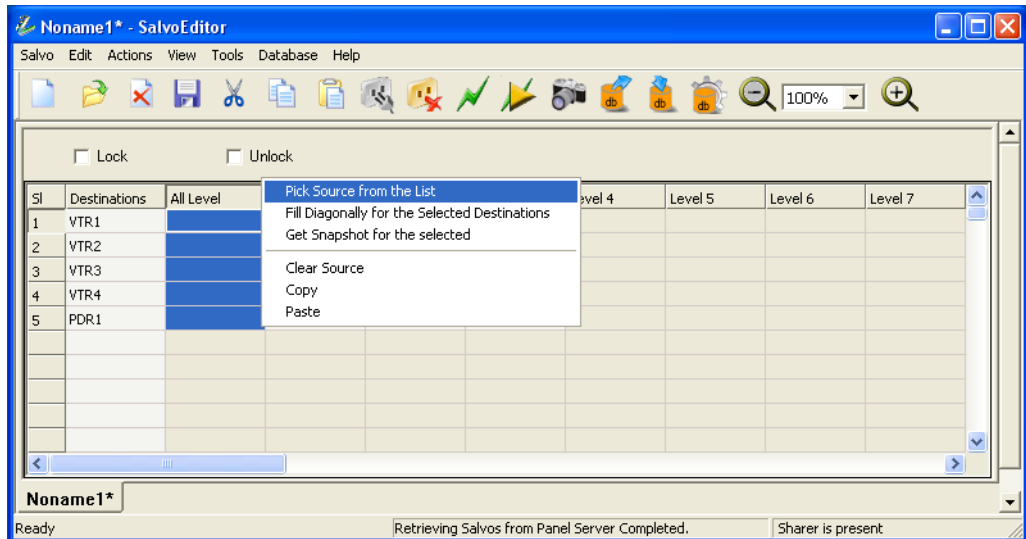
3. Click **OK**. The selected Destinations will be filled in (Figure 23).

Figure 23.



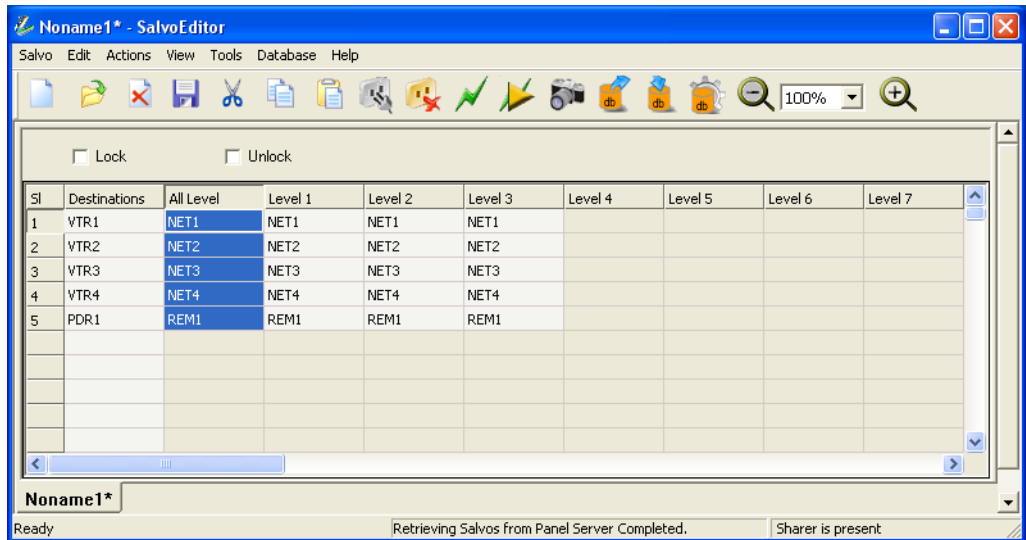
- Right click on a range of cells in the All Levels column, then choose **Pick Source from the List** (Figure 24).

Figure 24.



- Select a range of Sources from the menu and click **OK**. The selected Sources will fill in all the layers for those Destinations (Figure 25).

Figure 25.



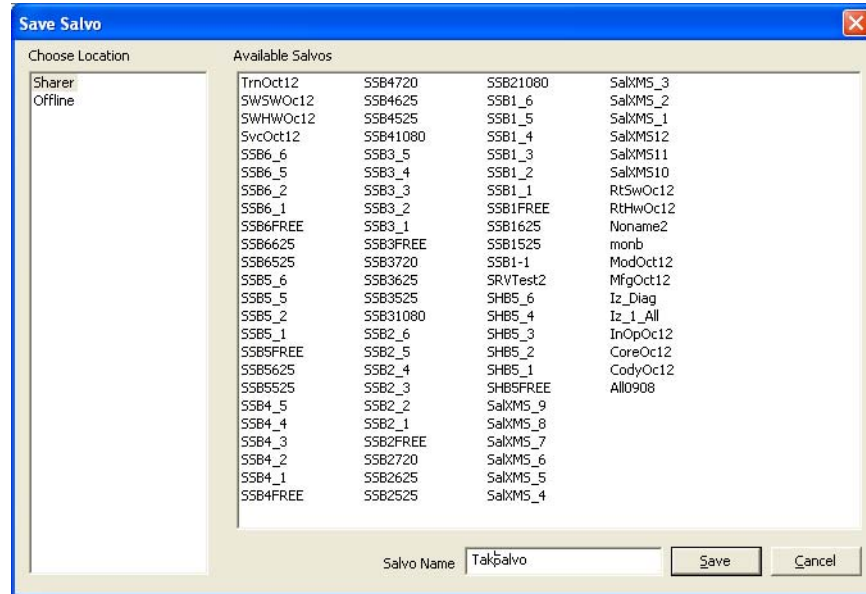
You can assign any Sources to any Destinations by selecting individual cells or groups of cells and choosing different Sources.



## Saving A Salvo

1. When the Salvo has been edited to your satisfaction, click on **Salvo/Save As**. A Save dialogue box appears (Figure 26).

Figure 26. Saving Sharer Salvos



2. Choose **Sharer** for the location, then enter a name for the Salvo and click **Save**. The Salvo will be saved to the database and its name will be listed in the Available Salvos pane.

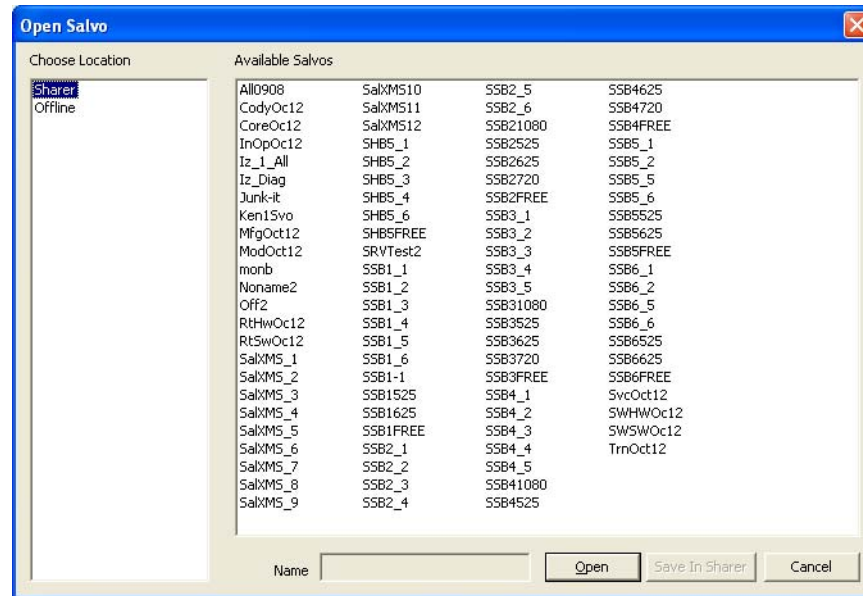
**Note** An empty space and the following characters and cannot be used in a file name. An error message will be reported if you attempt to do so:  
<> : " / ? ! @ # \$ % ^ & \* ( ) ' [ ]

The Panel Server gets the Salvo immediately, and the Salvo can be fired from an automation client or the Salvo Editor. However, panels will not immediately be able to access the new Salvo. You will need to edit the Salvo Exclusion set applied to the panel to include the newly created Salvo (it will be excluded by default). Then, the Salvo can be assigned to a button on the panel, or it can be accessed using PREV/NEXT buttons in Salvo mode.

## Opening a Salvo

1. To open a Salvo for editing or testing, click **Salvo/Open**. A popup menu will appear listing available Salvos (fig).

Figure 27. Salvo Open Menu



2. Choose **Sharer**, then select the Salvo from the list and click **Open**. The Salvo will be loaded from the database into the Salvo Editor.

## Deleting Salvos

**CAUTION** Deleted Salvo(s) are immediately removed, and will then be unavailable to any panels or automation clients.

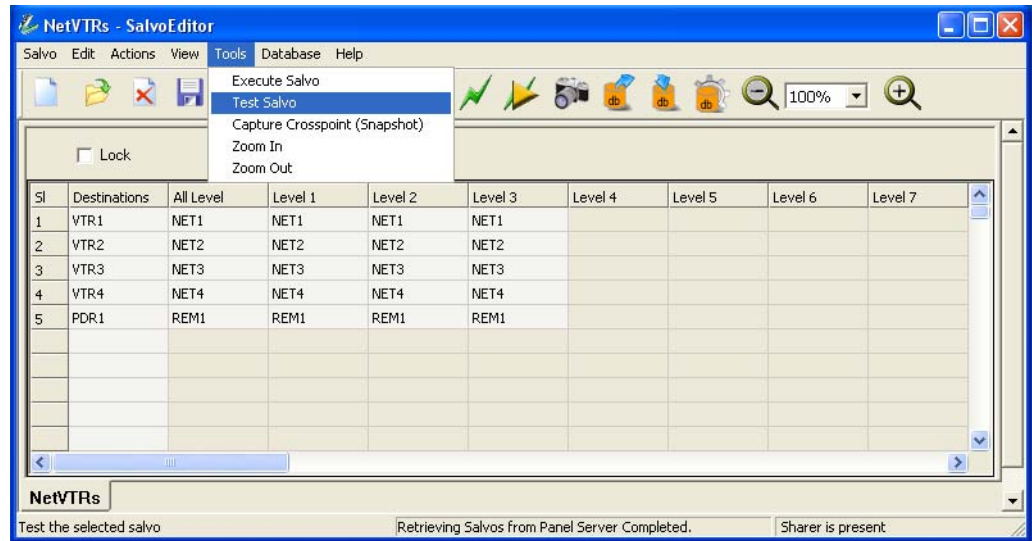
1. To delete one or more Salvos, click **Actions/Delete Salvos**.
2. Choose **Sharer**, then select the Salvos to be deleted and click **Delete**.

## Testing a Salvo with the Salvo Editor

The currently loaded Salvo can be tested from the Salvo Editor. When testing a Salvo, after it has been fired you can immediately restore the previous crosspoint settings.

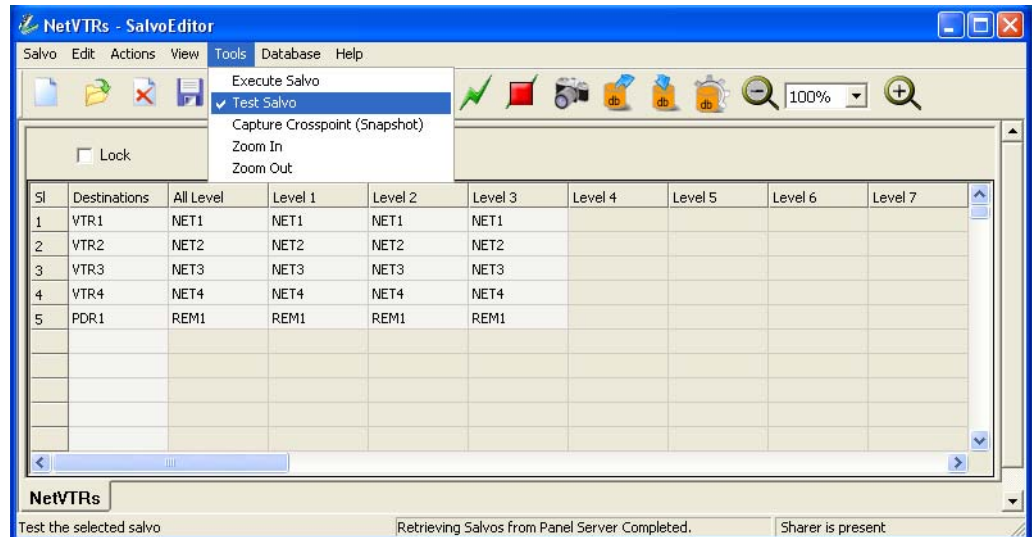
1. Click on Tools/Test Salvo (Figure 28). The Salvo will be fired, changing the designated crosspoints.

Figure 28.



2. After the Salvo is fired, a checkmark will appear next to **Test Salvo** in the Tools drop-down menu (Figure 29). Clicking on that item restores the Salvo to its previous crosspoints.

Figure 29.



## Executing a Salvo with the Salvo Editor

1. Select **Tools/Execute Salvo**.
2. Once executed, the crosspoints involved will retain their new settings until changed by a panel command or the execution of another Salvo.

## Using Salvos with Control Panels

Once Salvos have been created and saved to the Sharer, panels can be configured to use those Salvos by assigning Salvo select buttons to those Salvos, or by scrolling or paging to the Salvos on control panes that support those features. You will also need to edit the Salvo Exclusion set applied to the panel to include the newly created Salvo.

**Note** Salvos programmed with Unlock enabled cannot be used to unlock or unprotect destinations locked by another device. This is so even if the panel issuing the Salvo is configured with unlock/unprotect capabilities. See [Salvo Lock and Unlock Behavior on page 29](#) for more information.

## Snapshot (Capture Crosspoint)

The current crosspoint status of Destinations of a Salvo can be captured with the Snapshot feature.

1. Load a Salvo.
2. Select one or more Destinations.
3. Select **Tools/Capture Crosspoint (Snapshot)** or click on the camera icon. The current Sources will be shown for those selected Salvo's Destinations.

You can use this feature to help set up new Salvos that require the current Source selections.

1. Create a new Salvo.
2. Add Destinations for which the current cross points are to be captured.
3. Click **Tools/Capture Crosspoint**.
4. Save the Salvo. It can then be fired at any time to restore the status of the Destinations to the status when the Salvo was saved.

## Salvo Lock Protect Feature

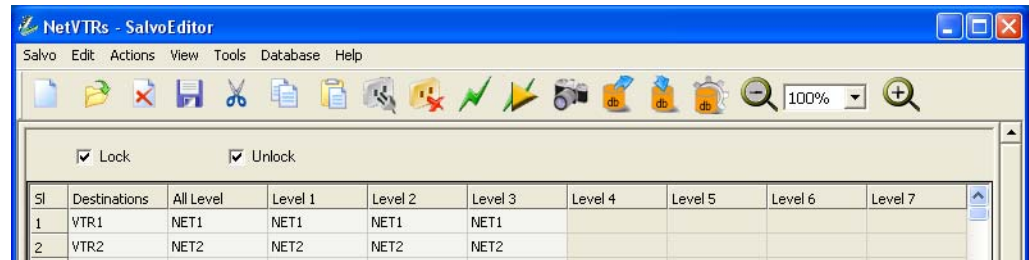
Salvo Editor supports creating Salvos with Pre Unlock/Post Lock capabilities. Encore 1.7.3 CPS and Router Controller software support salvo lock-protect/unlock-unprotect from control panels and protect/unprotect from

automation clients. For automation clients, only Protects are used to lock destinations. The Encore system does not support Soft locks or Hard locks for automation clients.

## Salvo Lock/Unlock Flags

Check boxes to set a Salvo Lock and Unlock are located at the top of the Salvo Editor screen (Figure 30).

Figure 30.



## Salvo Lock and Unlock Behavior

The exact behavior of Salvos with these settings depends on how the device issuing the Salvo is configured. For example, if a control panel is not configured with Protect functionality, then Salvos with Lock specified issued by that panel will still change Destination crosspoints, but will not Protect them.

Pre Unlock and Post Lock actions as well as any salvo Takes will fail for any Destinations in the salvo that are already locked by other devices. This is always the case for Salvo Editor issued commands. This also applies to a panel issuing a salvo with Lock or Unlock set even if the panel has the **Force Unlock/Unprotect** and/or **Lock/Protect Override** flags turned on. Only single Destination Take operations issued by a panel configured with override capabilities can change a Destination that is locked or protected by another device.

The Lock and Unlock check boxes apply to all the Destinations in the Salvo. To Lock or Unlock specific Destinations, create a Salvo containing only those Destinations and then set the desired check boxes.

If only some of the Destinations in a salvo are Protected by another panel, a salvo issued with Salvo with Unlock checked will not change Protected Destinations. Any Unprotected Destinations will be changed, however. There is no notification of a partially executed salvo, though you can take a snapshot to see all the current Sources.

### Unlock

When a salvo's **Unlock** is ON (checked) and the salvo is saved, executing that salvo first unlocks or unprotects all the destinations, if locks or protects

are present and the device issuing the salvo has permission to do so. Then the salvo performs the Takes. A Salvo does not require any sources be specified, and can only have a Lock or Unlock specified. This allows a salvo to lock/protect or unlock/unprotect multiple destinations without changing any crosspoint statuses.

### **Lock**

When **Lock** is ON for a Salvo in the Salvo Editor application and the salvo is saved, a control panel executing that salvo will Lock or Protect all destinations in the salvo after the salvo is executed (depending on the option enabled in the panel's configuration). A control panel can be configured with Protect, Soft Lock, or Hard Lock options from the OUI.

### **Lock and Unlock**

When both boxes are checked and the Salvo is saved, executing that Salvo will first Unprotect any Protected Destination, Take the specified Sources to those Destinations, and then Protect the Destinations.

### **Lock or Unlock Without Changing Crosspoints**

To Lock or Unlock Destinations and retain their current Source selections, when you create the Salvo leave blanks in the Source column for the desired Destinations.

## **Salvo Lock/Unlock Example**

If destinations VTR1 to VTR10 are in a salvo named "VTRSalvo" and that salvo's "Lock" flag is checked, when a Panel "DubbXY" executes salvo VTRSalvo, the CPS executes the salvo. Post execution, it also issues Protect/Lock (depending on the option enabled in the panel configuration) for destinations VTR1 to VTR10.

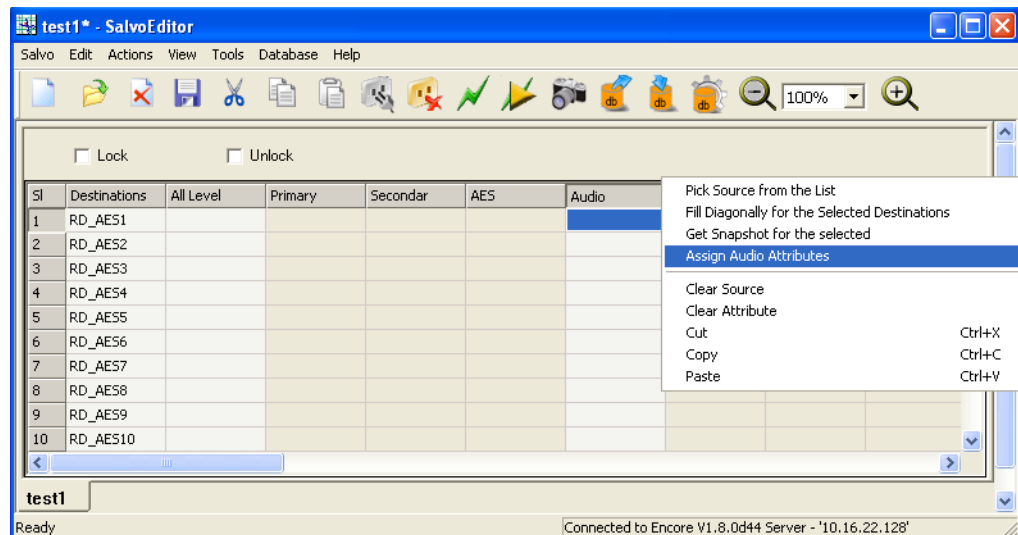
Similarly, if the Salvo "VTRUnLock" is created with the same set destinations VTR1 to VTR10 and the "Unlock" flag is checked, it can be used to unprotect/unlock all the destinations with one button push. To do this, execute the salvo VTRUnLock from the same panel (DubbXY). In this case, the CP Server will pre unlock the destinations involved in the salvo and execute the takes if any.

## Audio Attributes Feature

Salvos controlling Audio Attributes (introduced with Encore 1.8.0) can be created with Salvo Editor.

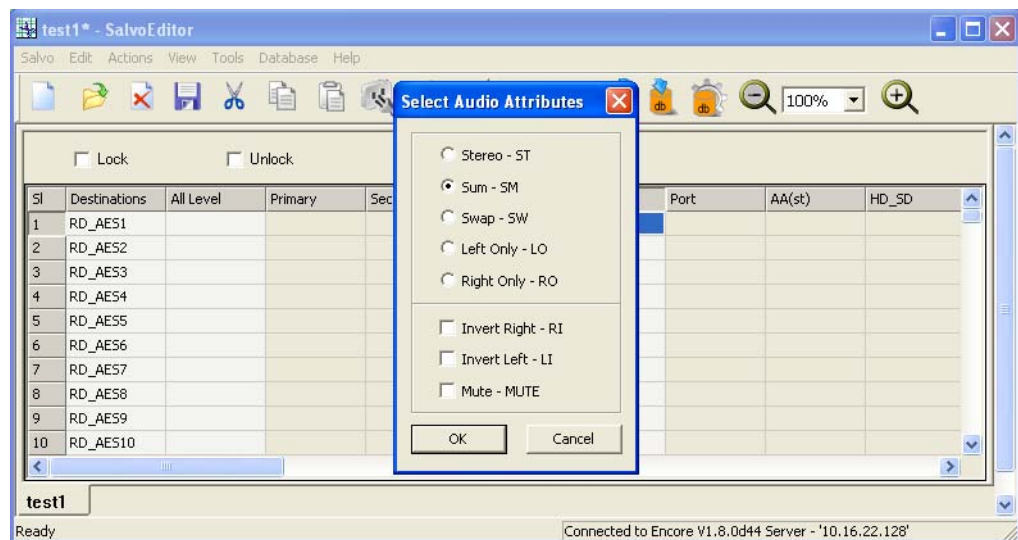
1. Right Click on an Audio level of a Destination to open a list. Select **Assign Audio Attribute** (Figure 31).

Figure 31. Audio Level Selected



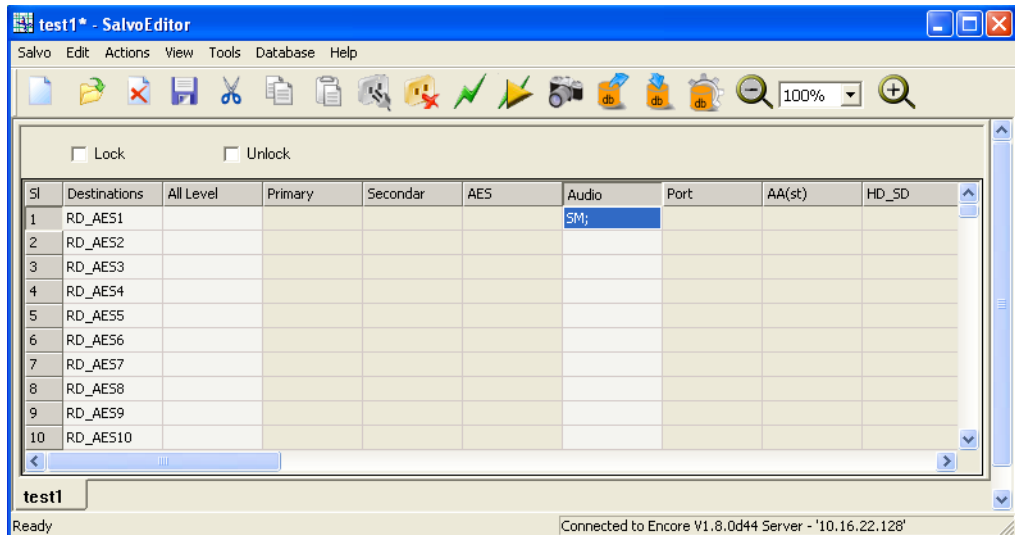
2. A window will appear with the available audio attributes. The top five attributes are mutually exclusive (only one can be chosen at a time), while the bottom three can be selected in combination with any others. The **Mute** attribute, however, overrides all other attributes, creating silence (Figure 32).

Figure 32. Audio Attribute Selected



- When the attribute has been assigned, the Audio level will report the attribute(s) being changed by that Salvo (Figure 33).

Figure 33. Audio Attribute Assigned



## Offline Salvos

The Salvo Editor actually works with two types of Salvos: Sharer Salvos and offline Salvos. These Salvos are stored in separate parts of the local Salvo Editor database. Sharer Salvos are automatically refreshed with information from the Sharer when the Salvo Editor connects to the Encore SCB running the Panel Server. Sharer Salvo information is stored in the Salvo Editor is also updated whenever the Sharer's Salvo database changes. This means Sharer Salvos are not persistent. If the Encore system database changes, the locally stored Sharer Salvos will also change.

The Salvo Editor allows users to create and or edit Salvos even when the application is not connected to the Encore system, using offline Salvos. However, the user is required to have established the connection at least once prior to the creation of offline Salvos. This loads information from the Sharer that is required to create and edit any Salvo.

Salvos created when the Salvo Editor is not connected and the Sharer is unavailable are always saved as offline Salvos. Offline salvos are stored separately from Sharer Salvos, and are persistent even when the Salvo Editor reconnects. Once the Salvo Editor is reconnected, offline salvos that have been saved by the user to the Sharer are converted to Sharer salvos, become activated, and are then available for use by the Encore system.

Offline Salvos are accessed and saved by choosing the **Offline** database category in the Open popup menu (see Figure 27 on page 26).



**Note** Offline salvos can be created even when the Salvo Editor is on-line, by choosing the **Offline** category when you save the Salvos. This is handy if you do not want salvos you create to be refreshed or overwritten.

When creating offline Salvos, the Salvo Editor persistently stores the following tables retrieved from the Encore system:

- Areas
- Levels
- Salvos
- Destinations
- Sources

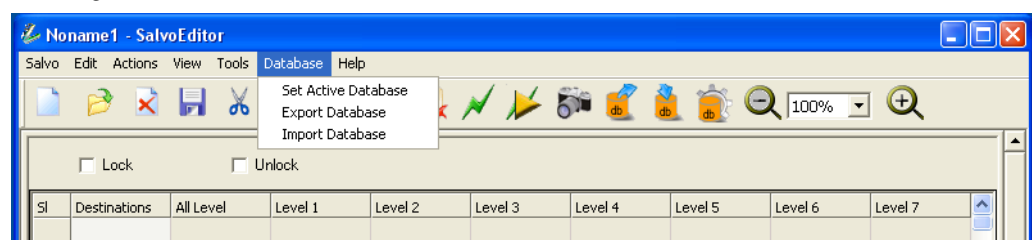
Actual crosspoint selections cannot be stored, so Snapshots cannot be performed when the Salvo Editor is not connected to the Panel Server.

The list of Sharer Salvos is always refreshed every time the Salvo Editor connects to an Encore Panel Server. However, the Salvos (whether offline or online) created earlier are not automatically re-validated. That is, if a Salvo created earlier has a Destination name/index that no longer exists in the Routing system (due to subsequent changes to the router configuration), the Salvo Editor will not detect, correct or remove the Destination from the Salvo. If an Area is not available, however, items for the missing Area report **NoRouter**. The user must manually correct for any configuration changes.

## Importing and Exporting Databases

Databases can be exported from and imported to the Salvo Editor, using the Database menu or the three orange database icons on the toolbar. The orange button are, in order from left to right: **Export Database**, **Import Database**, and **Choose the Active Database** (Figure 34).

Figure 34. Database Menu Controls



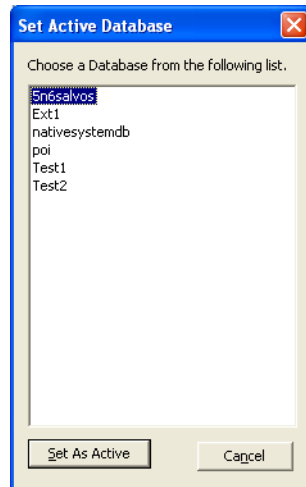
When the Salvo Editor establishes a connection with the Encore system for the first time, the Native system database is created. From then on the Native system database is always present as part of the Salvo Editor appli-

cation. Any configuration change in the Encore control system's Sharer database will be stored in the Native system database.

When the user chooses **Export** from the Database menu or with the left orange button, the application exports the data in the active database (see paragraph below) and stores it in a file. A file save dialog box allows the user to choose where to save the database file, which will then be considered an external database. This file can be stored on portable media for transport and eventual import back into the same or a different Salvo Editor application.

Salvo Editor users can import external database files by choosing **Import** from the Database menu or by clicking on the center orange button. When external database files have been imported, you can use the **Database** drop down menu or the orange button on the right to open a menu listing the available databases. Selecting a database and clicking **Set as Active** makes it the active database (Figure 35).

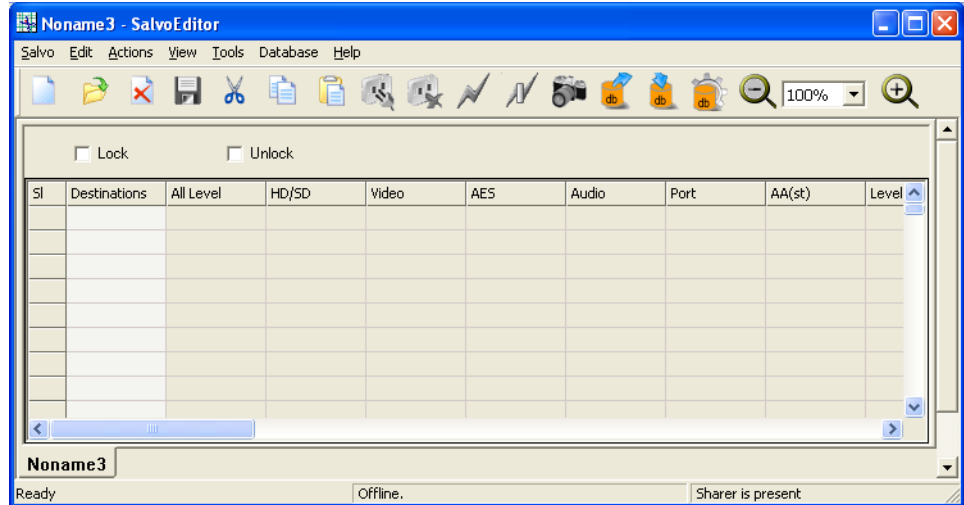
Figure 35. Database To Be Made Active Selected



When switching away from the native database to an external database, the Salvo Editor prompts the user to save the changes performed on the Salvos and close all the opened Salvos. It will then disconnect the Salvo Editor application from the Panel Server. Note, however, that the Salvo Editor is still in communication with the Sharer, allowing Salvos to be saved directly to the Sharer.

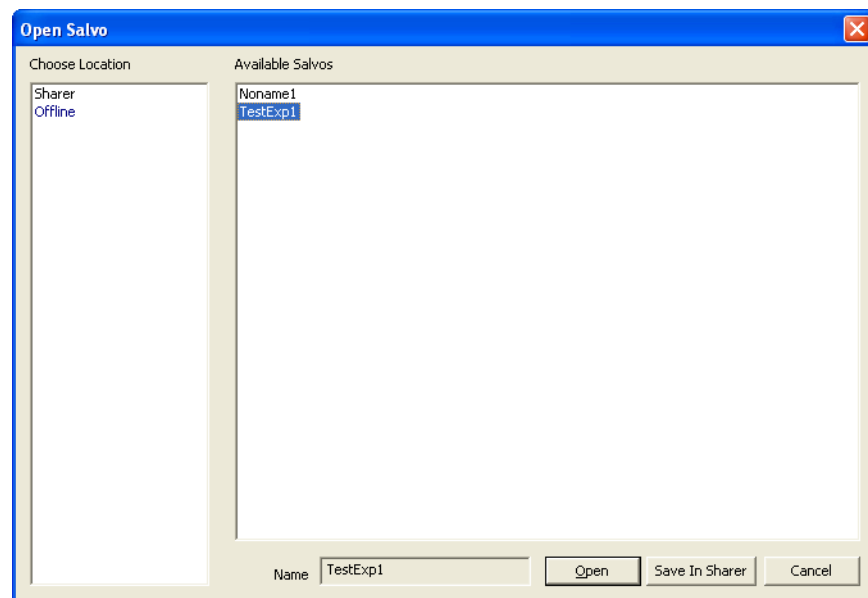
When an external database has been made active, the connect and disconnect buttons (to the Panel Server) on the Salvo Editor screen are grayed out, as these functions are not available (Figure 36).

Figure 36. Salvo Editor with Gray Buttons, External Database Active



The Salvo Editor can read Salvos from an active external database using the usual procedure (highlight spreadsheet cells and select from the popup list). Salvos in an active external database can be inspected, but cannot be edited or saved back to that database. These Salvos can be sent to the Sharer, however. This is accomplished using the **Open** menu, which displays a screen with a **Save in Sharer** button at the bottom (Figure 37). This button is only active when an external database is active. Selecting a Salvo and clicking on the button saves the Salvo in the Sharer.

Figure 37. External Database Save to Sharer



Only offline Salvos can be saved. One or several of these offline Salvos can be selected and saved directly to the Sharer. They will then be activated and become available for use by the Encore system.

External database information movement is one-directional. This means the Salvo Editor can export Salvo information from a native database, re-import the information and made it active in the Salvo Editor. This Salvo information can then be saved to the Sharer. External database Salvo information cannot be edited or saved, or be integrated back into a Salvo Editor native database. It is possible, however, to delete Salvos from an active external database.

When the offline Salvos have been saved, return the Salvo Editor to normal operation by setting the active database back to the native database, and then reconnect to the Panel Server.

## **Salvo Editor Instruction Manual**

This instruction manual in .pdf format is accessible in the Help menu. Adobe Acrobat Reader must be installed to view this file.

# Index

## A

acquire database [19](#)  
Audio Attributes feature [31](#)  
Auto Selec protocol [17](#)

## C

Capture Crosspoint (Snapshot) feature [28](#)  
click  
    right [21](#)  
    shift [21](#)  
Connect to Encore pane [20](#)  
control panel  
    access to new Salvo [25](#)  
    Salvo Lock and Unlock restrictions [28](#)  
    use of Salvos [28](#)  
creating a Salvo [22](#)

## D

database  
    acquiring [19](#)  
    export [33](#)  
    import [33](#)  
    Native [33](#)  
database information  
    stored by Salvo Editor [32](#)  
deleting Salvo [26](#)  
Destination  
    Protected by another panel [29](#)  
Destination column [21](#)  
device ID [18](#)  
documentation online [4](#)  
drop down menus [21](#)

## E

Encore OUI [12](#)  
executing a Salvo  
    with Salvo Editor [28](#)

export database [33](#)

## F

FAQ database [4](#)  
frequently asked questions [4](#)

## G

Grass Valley web site [4](#)

## I

import database [33](#)  
installation [8](#)  
Instruction Manual [36](#)

## L

Level column [21](#)  
license key [7](#)  
    registration [17](#)  
Lock  
    panel restrictions [28](#)  
    Salvo behavior [29](#)  
    without changing crosspoints [30](#)  
Lock and Unlock [30](#)  
Lock box [30](#)  
Lock/Unlock check boxes [29](#)  
Lock/Unlock example [30](#)

## M

monitor wall [7](#)

## N

Native system database [33](#)

## O

- offline salvo 32
- online documentation 4
- opening Salvo 26

## P

- PC
  - configuration 8
  - requirements 8
- Protect
  - by another panel 29

## R

- RCL protocol. 17
- registration
  - license key 17
  - Salvo Editor PC 12
- restricted characters
  - in sSlvo file name 25
- right clicking 21

## S

- Salvo
  - access by panels 25
  - creating 22
  - deleting 26
  - executing with Salvo Editor 28
  - general description 7
  - Lock behavior 29
  - opening 26
  - saving 25
  - testing 27
  - Unlock behavior 29
  - use with control panel 28
- salvo
  - recommended size 22
- salvo creation
  - offline 32
- Salvo Editor
  - database information stored by 32
  - features 7
  - general description 7
- Salvo Editor PC
  - registration 12

- Salvo Lock feature 28
- Salvo name
  - restricted characters 25
- Salvo Unlock feature 28
- Save dialogue box 25
- save location
  - Sharer 25
- saving a Salvo 25
- Select Destinations pane 23
- Sharer
  - found automatically 19
  - not found 20
  - save location 25
- shift-clicking 21
- size of salvo 22
- Snapshot
  - unavailable when offline 33
- Snapshot (Capture Crosspoint) feature 28
- software download from web 4
- software installation 12
- Source column 21
- spreadsheet design 21

## T

- testing Salvos 27
- tool bar 21
- Trial Mode 19

## U

- Unlock
  - panel restrictions 28
  - Salvo behavior 29
  - without changing crosspoints 30
- Unlock box 29
- User Interface
  - description 21

## W

- web site documentation 4
- web site FAQ database 4
- web site Grass Valley 4
- web site software download 4