

NV9654

NV9000 Control Panel

User's Guide

UG0077-00

30 Apr 2013



A **BELDEN** BRAND

Copyright © 2013 by Miranda Technologies

All rights reserved. No part of this manual may be reproduced in any form by photocopy, microfilm, xerography or any other means, or incorporated into any information retrieval system, electronic or mechanical, without the written permission of Miranda Technologies, Inc..

- Document Revision: 1.0
- Document Part Number: UG0077-00
- Software Version: 6.3.0

Change History

Rev.	Date	ECO	Description	Approved
1.0	24 Apr 13	18826	Initial release	D.Cox

Notice

Due to continued product development, the accuracy of the information in this document may change without notice. The information and intellectual property contained herein is confidential between Miranda and the client and remains the exclusive property of Miranda. If you find any problems in the documentation, please report them to us in writing. Miranda does not warrant that this document is error-free.

All title and copyrights as well as trade secret, patent and other proprietary rights in and to the Software Product (including but not limited to any images, photographs, animations, video, audio, music, test, and “applets” incorporated into the Software Product), the accompanying printed materials, and any copies of the Software Product, are owned by Miranda Technologies, Inc. The Software Product is protected by copyright laws and international treaty provisions. Customer shall not copy the printed materials accompanying the software product.

The software contains proprietary information of Miranda Technologies, Inc. It is provided under a license agreement containing restrictions on use and disclosure and is also protected by copyright law. Reverse engineering of the software is prohibited.

FC FCC Statement

This equipment has been tested and found to comply with the limits for a Class A digital device, pursuant to part 15 of the FCC Rules. These limits are designed to provide reasonable protection against harmful interference when the equipment is operated in a commercial environment. This equipment generates, uses, and can radiate radio frequency energy and, if not installed and used in accordance with the instruction manual, may cause harmful interference to radio communications. Operation of this equipment in a residential area is likely to cause harmful interference in which case the user will be required to correct the interference at his own expense.

CE Declaration of Conformance (CE)

All of the equipment described in this manual has been designed to conform with the required safety and emissions standards of the European Community. Products tested and verified to meet these standards are marked as required by law with the CE mark.

When shipped into member countries of the European Community, this equipment is accompanied by authentic copies of original Declarations of Conformance on file in Miranda USA offices in Grass Valley, California USA.

Trademarks

Miranda is a registered trademark of Miranda Technologies, Inc.

Brand and product names mentioned in this manual may be trademarks, registered trademarks or copyrights of their respective holders. All brand and product names mentioned in this manual serve as comments or examples and are not to be understood as advertising for the products or their manufactures.

Software License Agreement and Warranty Information

Contact Miranda for details on the software license agreement and product warranty.

Important Safeguards and Notices

This section provides important safety guidelines for operators and service personnel. Specific warnings and cautions appear throughout the manual where they apply. Please read and follow this important information, especially those instructions related to the risk of electric shock or injury to persons.

WARNING

Any instructions in this manual that require opening the equipment cover or enclosure are for use by qualified service personnel only. To reduce the risk of electric shock, do not perform any service other than that contained in the operating instructions unless you are qualified to do so.

Restriction on Hazardous Substances (RoHs)

Miranda is in compliance with EU Directive RoHS 2002/95/EC governing the restricted use of certain hazardous substances and materials in products and in our manufacturing processes.

Miranda has a substantial program in place for RoHS compliance that includes significant investment in our manufacturing process, and a migration of Miranda product electronic components and structural materials to RoHS compliance.

It is our objective at Miranda GVD to maintain compliance with all relevant environmental and product regulatory requirements. Detailed information on specific products or on the RoHS program at Miranda is available from Miranda Customer Support at

1-800-719-1900 (toll-free) or
1-530-265-1000 (outside the U.S.).

Symbols and Their Meanings



The lightning flash with arrowhead symbol within an equilateral triangle alerts the user to the presence of dangerous voltages within the product's enclosure that may be of sufficient magnitude to constitute a risk of electric shock to persons.



The exclamation point within an equilateral triangle alerts the user to the presence of important operating and maintenance/service instructions.



The ground symbol represents a protective grounding terminal. Such a terminal must be connected to earth ground prior to making any other connections to the equipment.



The fuse symbol indicates that the fuse referenced in the text must be replaced with one having the ratings indicated.



The presence of this symbol in or on Miranda equipment means that it has been designed, tested and certified as complying with applicable Underwriter's Laboratory (USA) regulations and recommendations.



The presence of this symbol in or on Miranda equipment means that it has been designed, tested and certified as essentially complying with all applicable European Union (CE) regulations and recommendations.

General Warnings

A warning indicates a possible hazard to personnel which may cause injury or death. Observe the following general warnings when using or working on this equipment:

- Heed all warnings on the unit and in the operating instructions.
- Do not use this equipment in or near water.
- This equipment is grounded through the grounding conductor of the power cord. To avoid electrical shock, plug the power cord into a properly wired receptacle before connecting the equipment inputs or outputs.
- Route power cords and other cables so they are not likely to be damaged.
- Disconnect power before cleaning the equipment. Do not use liquid or aerosol cleaners; use only a damp cloth.
- Dangerous voltages may exist at several points in this equipment. To avoid injury, do not touch exposed connections and components while power is on.
- Do not wear rings or wristwatches when troubleshooting high current circuits such as the power supplies.
- To avoid fire hazard, use only the specified fuse(s) with the correct type number, voltage and current ratings as referenced in the appropriate locations in the service instructions or on the equipment. Always refer fuse replacements to qualified service personnel.
- To avoid explosion, do not operate this equipment in an explosive atmosphere.
- Have qualified service personnel perform safety checks after any service.

General Cautions

A caution indicates a possible hazard to equipment that could result in equipment damage. Observe the following cautions when operating or working on this equipment:

- When installing this equipment, do not attach the power cord to building surfaces.
- To prevent damage to equipment when replacing fuses, locate and correct the problem that caused the fuse to blow before re-applying power.
- Use only the specified replacement parts.
- Follow static precautions at all times when handling this equipment.
- This product should only be powered as described in the manual. To prevent equipment damage, select the proper line voltage on the power supply(ies) as described in the installation documentation.
- To prevent damage to the equipment, read the instructions in the equipment manual for proper input voltage range selection.
- Some products include a backup battery. There is a risk of explosion if the battery is replaced by a battery of an incorrect type. Dispose of batteries according to instructions.
- Products that have (1) no on/off switch and (2) use an external power supply must be installed in proximity to a main power output that is easily accessible.

toc

Table of Contents

1 Preface	1
Chapter Structure	1
The PDF Document	1
Terms, Conventions and Abbreviations	2
Other Documentation and Software	2
2 Introduction	3
Summary	3
Panel Organization	4
Function Buttons	4
Alphanumeric Display	5
Display Fields	6
Tally Interface	8
Modes of Operation	8
Other NV9654 Functions	9
3 Installation.....	11
Package Contents	11
Installation	12
Installing Software and Documentation.....	12
Initialization	13
Testing	14
4 Configuration	15
Summary	15
Adding a Panel to an NV9000 Configuration	15
NV9654 Panel Configuration Page	18
Regions of the Configuration Page.....	19
Configuration Tasks	20
Commitment Buttons	21
Panel Options.....	21
Checkbox Options	23
Button Definitions	25
Button Specification.....	26
Button Types	27
'Edit Navigation Button' Dialog	34
Automatic Fill Options.....	35
Button Page List	36
Tally (GPIO) Window	38

Selection Buttons	38
Scrolling	39
Selection Button Behavior	39
XY Mode	39
MD Mode	40
Populating the MD Device List	40
Selection	40
XY Mode — Normal	40
XY Mode — Hold Mode	40
MD Mode — Normal	40
MD Mode — Hold Mode	41
Display Indexes	41
Single-Destination Mode	41
Multi-Destination Configuration	42
How to Configure MD Devices	42
MD Destination Options	43
User-Definable	43
User-Selectable	43
Global Navigation	43
Names	44
Referencing a Suffix Template	44
Referencing a Navigate Template	45
Composing Suffix Templates	46
Template Changes	47
Composing Navigate Templates	47
Template Changes	48

5 Operation..... 49

Summary	49
Modes of Operation	50
Behavioral Models	51
Button Legends	51
Levels on Selection Buttons	51
Level Mapping	53
MD Devices on Selection Buttons	53
Lists	54
Operating Concepts	55
Levels	55
Breakaway	55
Hold	56
Breakaway	56
Multi-Destination Mode	56
Category Selection	56
Buttons	57
Back	58
Broadcast	58
Category	58
Chop	59
Clear Preset	59
Default State	59
Destination	59
Destination Lock	60
Destination Protect	60
Free Source	61
Forward	61

Hold	61
Information	62
Level Map	62
Menu	64
Name Set Toggle	64
Navigate	64
Global Navigate	64
Page Down	65
Page Up	65
Panel Lock	65
Preset Release	66
Previous Source	66
Quick Source	66
Salvo	66
Save Preset	67
Selection Buttons	67
Source	68
Source/Destination	68
Source is Master	68
Take	69
Undefined	69
Toggle Display	69
VFD/SEL Toggle	69
X-Y Display	69
XY/MD Mode	70
Lock, Protect, and Release	70
Takes	70
XY Mode	70
Single-Destination Panel	70
MD Mode	71
Name Sets	71
Broadcast Routes	71
Making Broadcast Routes	72
Removing Broadcast Routes	72
Data Routing	72
Automatic Data Routing	72
Manual Data Routing	72
Semi-Automatic Data Routing	73
Chop	73
Salvo Mode	74
Menu Mode	74
Software Versions	74
User	75
Panel	75
LCD Control	75
Setup Mode	76

6	GPIO	79
	The Interface.....	79
	Input.....	79
	Output.....	80
	GPIO Configuration Concepts.....	80
	The GPIO Section of the NV9654 Page.....	80
	Configuring Outputs.....	81
	Configuring Inputs.....	83
7	Technical Details	85
	Power Specifications.....	85
	NV9654 Specifications.....	86
	Environmental Specifications.....	87
	Defaults.....	87
	Initial Panel State.....	87
	Configuration Page.....	87
	DHCP.....	88
	Drawings.....	88
8	Misc. Topics	91
	LCD Buttons.....	91
	Power Cord Retention.....	91
	Ordering Information.....	93
	Glossary	95
	Index	97
	Contact Us	105

1

Preface

Chapter 1 is an introduction to the NV9654 User's Guide.

Topics

Chapter Structure	1
The PDF Document	1
Terms, Conventions and Abbreviations	2
Other Documentation and Software	2

Chapter Structure

The following chapters provide detailed information regarding the NV9654 Control Panel:

- Chapter 1, [Preface](#), (this chapter) outlines ways to use this guide.
- Chapter 2, [Introduction](#), provides a functional description of the NV9654.
- Chapter 3, [Installation](#), provides installation, connection, and initialization instructions.
- Chapter 4, [Configuration](#), provides configuration instructions.
This chapter is for configurers, primarily.
- Chapter 5, [Operation](#), provides operating instructions.
This chapter is for operators, primarily.
- Chapter 6, [GPIO](#), describes the tally (a.k.a. GPIO) interface and tells you how to configure it.
- Chapter 7, [Technical Details](#), provides electrical, mechanical, and environmental specifications, product drawings, and default settings.
- Chapter 8, [Misc. Topics](#), presents a glossary and miscellaneous instructions and information.
- An [Index](#) is also provided for your reference.

The PDF Document

This guide is provided in PDF format, allowing you to use Acrobat's "bookmarks" to navigate to any desired location. You can also easily print a hardcopy. Please note:

- Use the Table of Contents or the bookmarks page to jump to any desired section.
- Many hyperlinks are provided within the chapters.
- Use the Index to jump to specific topics within a chapter. Each page number in the index is a hyperlink.
- Use Acrobat's 'Go to Previous View' and 'Go to Next View' buttons to retrace your complete navigational path.

Use the 'First Page', 'Previous Page', and 'Next Page', and 'Last Page' buttons to go to the first, previous, next, or last page within a PDF file.

Note

To display the navigation buttons, right-click the Tool Bar area, and check 'Navigation'.

- Use Acrobat's extensive search capabilities, such as the 'Find' tool and 'Search' tool to perform comprehensive searches as required.

Terms, Conventions and Abbreviations

The following conventions are used throughout this guide:

- The symbol **p** denotes either an example or a special message.
- Entries enclosed in single quotation marks or Capital Letters denote physical control panel buttons, configuration buttons, or menu items.
 - Click 'Apply' to ...
 - Press the SRC 12 button ...

The following terms and abbreviations are used throughout this guide:

- The term "control panel" refers to the NV9654 control panel and to NV96xx control panels, in general.
- "High tally" means that a button is brightly illuminated.
- "Low tally" means that a button is illuminated at low intensity. Most buttons assume a low tally state until selected.
- "MD" is an abbreviation for multi-destination.
- "SE" is an abbreviation for NV9000-SE Utilities.

Other Documentation and Software

You should read and be familiar with the material presented in the following documents:

- NV9000 Quickstart Guide.
- NV9000-SE Utilities User's Guide (or NV9000-SE Utilities help files).
- The router manuals for whatever routers you have in your system.

You should also be familiar with the NV9000-SE Utilities software and NV9000 router control systems.

2 Introduction

Chapter 2 provides a basic functional description of the NV9654.

Topics

- [Summary](#) 3
- [Panel Organization](#) 4
- [Modes of Operation](#) 8
- [Other NV9654 Functions](#) 9

Summary

The NV9654¹ is a hierarchical control panel featuring 54 LCD function buttons (illuminated in various colors and having 1 to 3 lines of text). The panel can be configured in either of two behavioral modes:

- All-Button mode
- ‘Display and Button’ mode

Under ‘Display and Button’ mode, the left-most 15 buttons function as an alphanumeric display. These buttons display the same information as some other panels that have displays, such as the NV9640. Under this mode, the panel operator can turn the “display” on and off. When the display is off, the 15 buttons can have other configured functions.

Under ‘All-Button’ mode, the panel provides no display. Note that under ‘Display and Button’ mode, the panel has 3 additional button functions that relate to the display.

The panel can operate in X-Y mode or in multi-destination (MD) mode. Operators can switch between modes at any time.

This 2RU panel is organized as shown in figures 2-1 and 2-2:

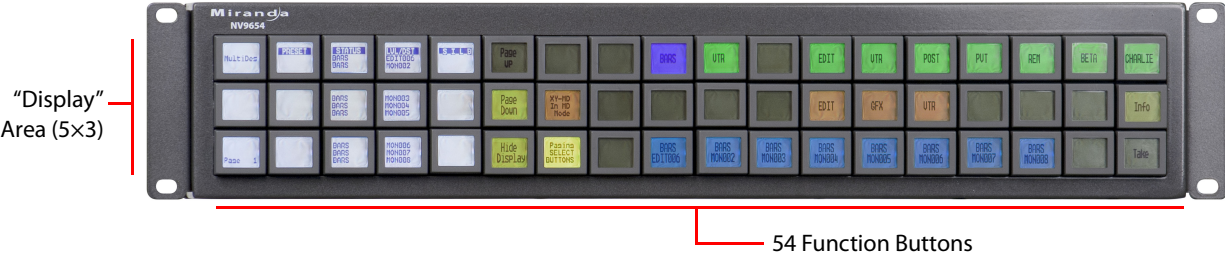


Fig. 2-1: NV9654 Front View

1. An equivalent NV9654V — a GUI that is called a “virtual panel” — is available. It emulates the NV9654.

At the rear, in addition to power, serial, and network connectors, is a 25-pin GPIO (i.e., tally) connector that supports 4 optically isolated relay outputs and 8 optically isolated inputs:



Fig. 2-2: NV9654 Rear

The NV9654 is a compact unit, being 2RU and having an overall depth of 3.2”.

The NV9654 provides a *tree-structured* (or hierarchical) button layout. Configurers can define a “tree” of button pages in such a way that each of the 54 LCD buttons can either (1) execute a function or (2) select a subtree (i.e., present an entirely new set of functions at a different level in the tree). The tree, with its subtrees, is not limited in size.

We use the term “button page” or “page” to mean the set of 54 button functions at any particular place in the tree. A panel that is configured in ‘Panel and Button’ mode shows the “display” only on the top level page of the button “tree.”

Configurers will use ‘Navigate’ buttons to create new button pages (subtrees). During operation, NV9654 users will press a ‘Navigate’ button to access a subtree. However, ‘Navigate’ buttons are typically not labeled “Navigate”; they would be labeled according to the specific function they perform in your system.

The panel can also display predefined button pages. For instance, a “category” button, when pressed, can display one or more pages of sources or destinations through which the operator may browse. A “menu” button presents a page of (pre-defined) menu options.

Panel Organization

Function Buttons

The NV9654 has an array of 54 LCD buttons. Each button has 1, 2, or 3 lines of text, 8 characters per line. When there are one or two lines of text, the characters are large; when there are 3 lines of text, the characters are smaller. (One or all of the lines of text might be blank). The buttons can display one of seven colors dynamically: nominally red, green, blue, purple, amber, yellow, or grey. We say a button is “dark” when its LCD is turned off.

During configuration, you can assign any of the 7 colors to a button.

Each LCD button has *four* levels of brightness: off, low, medium, and high, and supports *three* operational levels: high tally, low tally, and off. High tally can be either medium or high brightness and low tally can be either low or medium brightness. High tally is always constrained to be brighter than low tally. We say a button is “dark” when its LCD is turned off. See [LCD Buttons](#), page 91, for a color chart.

Although you can see a list of the pages in the tree during configuration, the structure of the tree is not evident on the panel itself. The panel operator must commit the tree structure to

memory to be able to use the panel. It is up to the person configuring the panel to design a usable tree structure.

Some buttons functions are assigned by the system depending on the context. For example, if a button page is to represent all sources in a category, and that list changes, the button subtree adjusts in size dynamically. The panel software adds a “forward” button and a “back” button if there are more sources than buttons. Pressing the ‘Forward’ button takes you to the next page of sources. Pressing the ‘Back’ button takes you to the previous page of sources.

Some button states depend on context. Many buttons remain unlit when their functions are disabled. For example, ‘Page Up’ and ‘Page Down’ buttons remain unlit until there is an opportunity to scroll up or down, respectively. By default, an XY/MD button turns green for X-Y mode and amber for multi-destination mode.

The LCD buttons display a menu if the operator presses a menu button. When the operator make a menu selection, the panel displays viewable data on the LCD buttons. In some cases, the operator can enter data (such as panel ID or LCD brightness) using buttons that allow data entry.

Configurers can define ‘Selection’ buttons that select a level or an MD device. (They *must* do so if the operator is to make such selections.)

Scrolling is necessary when a list of items — for instance, levels or MD devices — exceeds the number of buttons available for the items. Panels that use multi-destination mode will probably require ‘Page Up’ and ‘Page Down’ buttons.

Alphanumeric Display

The panel can be configured in ‘All-Button’ mode or ‘Display and Button’ mode. In ‘Display and Button’ mode, the left-most 15 buttons (a 5x3 array) form an alphanumeric display. (These buttons therefore provide a 40x9 matrix of characters.) The panel operator has the option of turning the display on or off. When the display is off, the 15 buttons can have other functions.

In ‘All-Button’ mode, the display is not present. In ‘Display and Button’ mode, the display is available only in the top-level button page.

The alphanumeric display provides real-time feedback for the operators as they make selections to execute takes and other operations. The panel functions in two modes: X-Y or multi-destination. The display changes according to those modes. This is an example for X/Y mode:

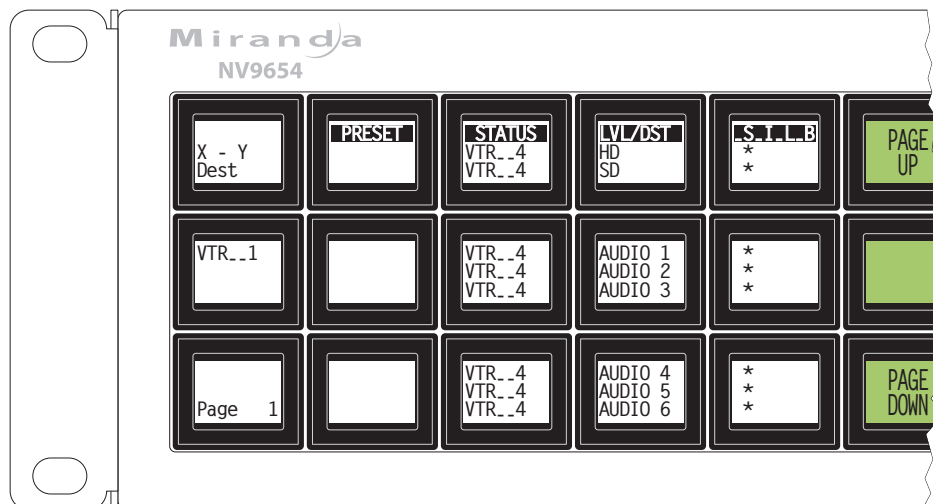


Fig. 2-3: X/Y Mode

This is an example for multi-destination mode:

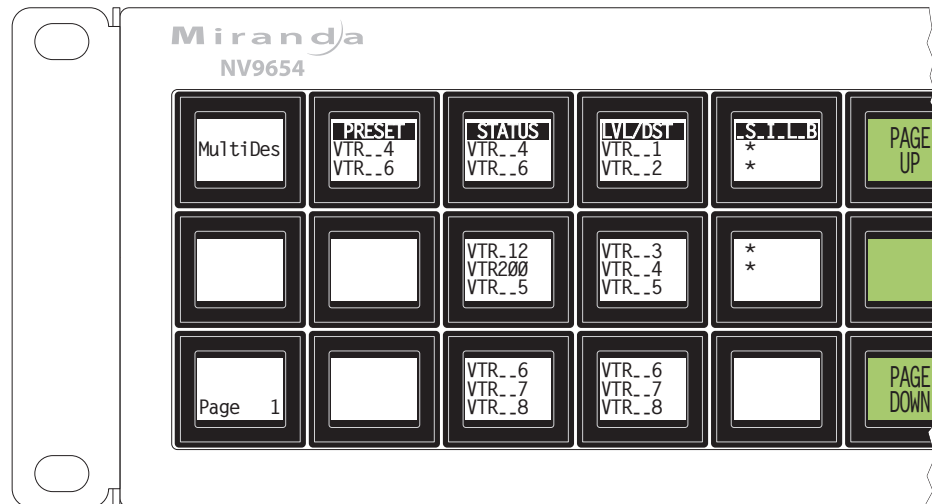


Fig. 2-4: Multi-Destination Mode

In either case, the display has 9 lines (1 header and 8 lines of information) and its buttons are white. Operators might need to scroll the display to see additional information. ('Page Up' and 'Page Down' buttons can be used to scroll the display.

Display Fields

The display has 5 columns:

- Information (the left-most column, which has no heading).

The first entry in this column is either "X - Y" or "MultiDes" unless the panel is in salvo mode, menu mode, or setup mode. See chapter 5 for those topics.

The bottom-most entry in this column is always the page number of the display, which can scroll.

In X-Y mode, the second entry is always the word "Dest" as a title for the third entry which identifies the destination currently selected. In Figure 2-3, the current destination is VTR..1.

In MD mode, there are no entries in this column other than the word "MultiDes" and the page number.

- Preset.

The preset column indicates what source *will* be routed to a destination when the operator presses the 'Take' button.

In X-Y mode, the preset column represents the levels of a source or the levels of multiple sources under breakaway. These are called the *preset source(s)*. After the take, they disappear from the preset column and re-appear in the status column, reflecting that the preset sources have now become *current sources*.

In MD mode, the preset column indicates the sources that will be routed to selected destinations in the 'Level/Dest' column. These are the *preset source(s)*. After the take, they disappear from the preset column and re-appear in the status column, reflecting that the preset sources have now become *current sources*.

- Status.
The status column indicates what source(s) have been routed to the currently selected destination.
In X-Y mode, the status column represents the levels of a source or the levels of multiple sources under breakaway. These are called the *current source(s)*.
In MD mode, the status column represents the sources routed to each of the destinations in the 'Level/Dest' column. Again, these are the *current sources*.
- LVL/DST.
(This stands for "level/destination.")
In X/Y mode, this column identifies the *levels* of the currently selected destination. That destination is identified in first column, the information column. In Figure 2-3, 'VTR 1' is selected. Operators might need to scroll to see or select a level.
In MD mode, the 'Level/Dest' column presents all the MD devices (destinations) defined in the NV9654 configuration. (Actual destinations are defined in the NV9000 system configuration.) Operators might need to scroll to see or select a destination.
- S-I-L-B (Attributes).
This column represents 4 attributes of the levels or destinations present in the 'LVL/DST' column:
"S" stands for *selected*. An asterisk (*) in the "S" column means that the associated level (or destination) is selected. A blank space in the "S" column means that the level (or destination) is not selected.
 In X-Y mode, an "*" indicates that a *level* is selected. In MD mode, an "*" indicates that an MD device is selected.
"I" stands for *information*. An asterisk in the "I" column means that the additional information regarding the associated level or destination is available. Press an 'Information' button to view the information.
"L" is the heading for *locks and protects*. An "L" in the "L" column means that the associated level (or destination) is locked. A "P" in the "L" column means that the associated level (or destination) is protected. A blank space in the "L" column means that the level (or destination) is neither locked nor protected.
▲ NV9654 operators may lock, protect or release destinations. It is important for operators to know that other operators may lock, protect, or release sources and destinations.
▲ When we say a *level* is locked (or protected), we really mean that the currently selected destination is locked on that level.
"B" stands for *breakaway*. In X/Y mode, an asterisk in the "B" column means that the associated level is a breakaway level. A blank space in the "B" column means that the level is not a breakaway level. In MD mode, an asterisk indicates a breakaway on the associated destination.

The display fields can show either names from a name set or system mnemonics for devices depending on (1) the state of the 'Name Set Toggle' button (if the panel has one), (2) the default name set (3) the existence of name sets in the NV9000 configuration. (An "alias" is a name defined in a name set.) See [Panel Options](#) on page 21.

Tally Interface

At the rear of the panel is a DB25 connector that provides 8 tally inputs and 4 tally outputs. (The outputs are solid state relay outputs.) Both inputs and outputs are optically isolated.

During configuration, you can construct expressions of Boolean logic that switch the outputs on or off. The terms of the logic expressions are states of the source and destination devices, etc., controlled by the NV9000 control system.

During configuration, you can define NV9654 behavior that will follow the tally inputs.

What you connect to the tally interface is, of course, up to you. Miranda provides a breakout cable (WC0053) for the tally connector — as a purchase option.

The NV9000-SE Utilities on-line help calls the tally interface a GPIO interface. On the rear of the panel, it is labelled a “GPI interface.”

See chapter 6, [GPIO](#), on page 79, for complete detail.

Modes of Operation

The panel operates in either X-Y mode or multi-destination (MD) mode. The panel has a button type (XY/MD) that toggles between the modes. A third mode — called “single-bus,” “single-destination,” or “button-per-source” mode — can be emulated in either X-Y mode or MD mode.

The primary modes of operation are:

- X-Y mode — control of individual router *levels*. Choose a destination, optionally choose desired breakaway levels, choosing source(s), and press ‘Take’ to complete a desired route.
- Multi-destination mode — lets you control multiple destinations. The LCD buttons display destinations and sources. You can scroll through destination lists using the ‘Page Up’ and ‘Page Down’ buttons. Select a destination using selection buttons, choose a source, and repeat for all desired routes. Then press ‘Take’. Takes in MD mode are “all level,” and break-aways cannot be performed.

▲ A ‘Hold’ button allows you to select many MD destinations at once.

- Single-destination mode.

Single-destination” mode is not a distinct mode, but we mention it here because it is a mode on some other panels and can be simulated on the NV9654. It can be combined with the other two modes. You can create many different forms of “single-destination” mode.

To understand single-destination mode, you must understand the different button types. Please read the Configuration and Operation chapters and then see [Single-Destination Mode](#) (page 41).

The secondary modes of panel operation are:

- Setup mode — where the NV9654 is freshly powered up, but disconnected from the network. In this mode, you can preset the NV9654’s panel ID and perform a few diagnostic tasks.
- Salvo mode — pressing a Salvo button (and then the ‘Take’ button) executes a salvo. (The duration of a salvo is indeterminate.)
- Menu mode — pressing a Menu button places the NV9654 in “menu” mode. In menu mode, the panel’s button array becomes a menu that changes as needed during menu operation.

Other modes of operation are:

- Hold mode — when you press the 'Hold' button, hold mode becomes active and when you press it again, hold mode becomes inactive. See [Hold](#) on page 59.
- Save preset mode — when you press the 'Save Preset' button, 'Save Preset' mode becomes active and when you press it again, 'Save Preset' mode becomes inactive. See [Save Preset](#) on page 62.

Other NV9654 Functions

The NV9654 can be configured to perform the following additional functions:

- Previous source, free source, "quick" source, and immediate source/destination selection.
- Return to a pre-defined (or default) state.
- Hold breakaway levels.
- System salvos.
- Lock/protect/release for destinations.
- Forced release of locked or protected devices.
- Device selection using indexes or suffixes.

The NV9654 provides the following additional features:

- The NV9654 supports multiple-level breakaways in X-Y mode. This lets you route multiple sources to the same destination *on different levels*.
- The panel supports gang or dub switching in multi-destination mode.
- Broadcast data routing in X-Y mode.
- Level mapping.
- Button page "templates" — global navigation templates and suffix templates — for easier configuration.

3 Installation

Chapter 3 provides installation and connection instructions.

Topics

<i>Package Contents</i>	11
<i>Installation</i>	12
<i>Installing Software and Documentation</i>	12
<i>Initialization</i>	13
<i>Testing</i>	14

Package Contents

If you have ordered one or more NV9654 control panels from Miranda, inspect the shipping container for damage. If you find any container damage, unpack and inspect the contents. If the contents are damaged, notify the carrier immediately.

As you unpack the shipping container, look for the packing slip and compare it against the contents to verify that you received everything as ordered. If anything is missing (or if you find equipment damage unrelated to shipping), please contact technical support. Refer to [Miranda Technical Support](#) on page 105.

Depending on your order, the NV9654 items that can ship include:

- One or more NV9654 control panels.
- One or two power supplies for each NV9654, with straps that secure the AC power cords to the power supplies.
- Optional WC0053 breakout cable.

The package does not contain network cables, serial cables, or mounting screws.

You do not need to take any special precautions regarding ESD.

This document does not address the shipment or installation of any other equipment or software that can be used in conjunction with the NV9654 (including the NV9000 system controller, NV915 system controller, NV915 system controller, other NV96xx control panels, EC9700 GUI, EC9710 GUI, and configuration programs such as UniConfig, MRC, or NV9000-SE Utilities).

This document does briefly address the use of NV9000-SE Utilities and the Panel IP Configuration Utility as they pertain to panel configuration.

Installation

Follow these steps to install a NV9654 control panel:

- 1 Mount, and secure, the panel in the rack.

The NV9654 is designed to mount in a 19" rack. Rack-mounting is not a requirement.

Place the panel in position in your rack. Attach the panel to the rack frame, using screws appropriate for your rack. The panel's mounting slots are spaced 3.00" (76.2 mm) vertically and allow approximately 1/8" (3 mm) of movement horizontally.

- 2 We assume that you have an Ethernet switch connected to the "Panel and Router Network" port of your system controller. Connect an Ethernet cable from that switch to the RJ-45 port at the rear of the NV9654.
- 3 Connect one or both power supplies. First connect the 4-pin connector to PS1 or PS2 on the rear of the router. The connectors are keyed and snap into place. There is only one way they fit. Do not force them. Then connect the power supply to AC power.



A second power connection is for redundancy only (protection against failure) and is not a requirement for operation.

Refer to [Power Specifications](#) on page 85 for details on the PS0001 power supply. See also [Power Cord Retention](#) on page 91.

- 4 Connect tally (GPIO) input devices and output devices at the DB25 GPI connector.
You can use the optional WC0053 breakout cable to make these connections.
See chapter 6, [GPIO](#), on page 79 for detail regarding the tally interface.

Installing Software and Documentation

This document is available through the Miranda web site.

You must use NV9000-SE Utilities to configure the NV9654 control panel. Contact Miranda if you need to obtain the latest version of this NV9000 configuration software.

You may use the Panel IP Configuration Utility if you want your NV9654 to have a static IP address or to use DHCP. The panel, as it comes from the factory, defaults to DHCP.

Initialization

Before your NV9000 system controller can communicate with an NV9654, you must give it a panel ID. Follow these steps for each NV9654 you are installing:

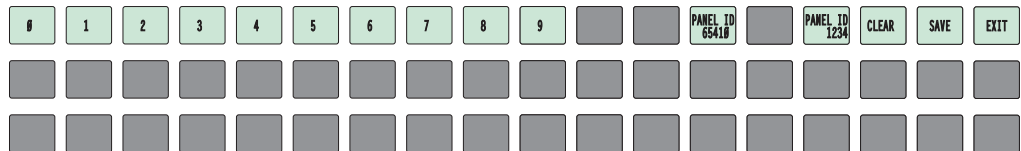
- 1 Power up the NV9654. Do not connect its Ethernet cable. (Disconnect it if it is connected.)
After a few seconds, the alphanumeric display will show 'No Server' at the top and show the panel's current panel ID. The 2 left-most buttons and the right-most button in the top row now read:



- 2 Press the 'Menu' button to enter the menu. The menu button now displays 'Exit'. At any time during this process, you can press the exit button to "back out of" the process. You might have to press it more than once.
- 3 Find and press 'Enter Panel ID' among the panel buttons on the left.



- 4 After you press 'Enter Panel ID', the panel illuminates 10 "digit" buttons at the left end of the top row of buttons. Press the digits of your intended panel ID—up to 8 digits. The digits you enter appear on the button next to the 'Clear' button at the right. If you make an error, press the 'Clear' button to start over.



- 5 Then press the 'Save' button (on the right) to save the ID, or press the 'Clear' button to discard the ID.

The new panel ID does not appear until you exit the menu after saving.

- 6 You may use any other menu function at this time. When you are finished, press the 'Exit' button (which reappears) to leave the menu.
- 7 After you designate the panel ID, reconnect the Ethernet cable. The system controller will detect your panel in a few seconds. (**All** panel IDs must be unique.)

You can now prepare an NV9654 configuration in NV9000-SE Utilities and upload the configuration to the NV9654. You need the panel ID to create a NV9654 configuration. When you upload the configuration, the panel ID you entered in NV9000-SE Utilities designates the actual panel to which the upload will occur. The panel might be a physical panel or a virtual panel. If no actual panel has that ID, the upload cannot occur.

Testing

As shown above in step 3, a panel test function is available when the NV9654 is disconnected from the system controller. The test determine the “health” of the buttons of your NV9654. See [Setup Mode](#) on page 76 for detail. Press the ‘Software Versions’ button to review the versions of installed software and firmware.

These are points to consider after you install your NV9654 control panel(s):

- 1 Do the buttons illuminate? When an NV9654 powers up, its two leftmost LCD buttons are supposed to turn green. Does it pass the panel test mentioned above?
- 2 When the NV9654 powers up and it is connected to the system controller, it should initialize completely. (That takes a few seconds.) The NV9000 system should load whatever configuration exists for that panel and the buttons appropriate for that configuration should light in the colors appropriate for the top-level button page of that configuration.

If you continue to see “No Server,” “Acquiring IP Address,” or “Locating Network” on button 2, you have a problem. Reboot everything and try again.

- ▲ The NV9654, by default, acquires its IP address through DHCP on the NV9000’s panel/router network. You can use the Panel IP Configuration Utility to force the panel to have a static IP address.

If (in setup mode) you do not see your designated panel ID on the top left button, you have either not initialized the panel or no configuration has been created for your panel in NV9000-SE Utilities.

- 3 Is the system controller actually running? With the typical noise levels in a facility, it can sometimes be difficult to tell. Use the ‘System’ pages of NV9000-SE Utilities to make the determination.
- 4 Is NV9000-SE Utilities installed and operating? If so, can you upload a configuration to the specified panel?
- 5 Does the configuration actually work? Is it useful? Can the operator perform tasks and perform other operations?

The design of an NV9654 “operator interface” is non-trivial. You might want to consider how well your operator interface works in addition to the basic question of whether it works.

4 Configuration

Chapter 4 provides configuration instructions for the NV9654.

Topics

Summary	15
Adding a Panel to an NV9000 Configuration	15
NV9654 Panel Configuration Page	18
Commitment Buttons	21
Panel Options	21
Button Definitions	25
Button Page List	36
Tally (GPIO) Window	38
Selection Buttons	38
Single-Destination Mode	41
Multi-Destination Configuration	42
Global Navigation	43

Persons not interested in NV9654 configuration need not read this chapter.

Summary

The NV9654 has a “multi-page” user interface. Each of its 54 buttons (illuminated in various colors and having 3 lines of text) can either (1) execute a function or (2) select another button page (i.e., present another set of functions). The number of different button pages is not limited. Panel operators navigate to different button pages to perform different tasks.

We say that the user interface is tree-structured (or hierarchical) although it is not always a “tree” in the strictest sense. (It is possible to construct a tree-like graph of the button pages.)

Fifteen of the NV9654’s buttons — a 5×3 button array at the left of the panel — can optionally be configured as an alphanumeric display that presents the status of operations as they occur. An NV9654 configuration typically provides ‘Page Up’ button and ‘Page Down’ buttons with which the operator can scroll the display. The operator can turn the display on and off.

At the rear of the panel, a DB25 connector supports 8 tally inputs and 4 tally outputs.

NV9000-SE Utilities is the software with which to configure the NV9654. Figure 4-1, following, shows the default NV9654 panel configuration page from NV9000-SE Utilities.

Adding a Panel to an NV9000 Configuration

You must create configurations for the NV9654 using NV9000-SE Utilities. We assume that you are familiar enough with NV9000-SE Utilities that you can understand the following material. It is not difficult material, but some of the concepts might not be familiar to everyone.

It takes only a few seconds to add a new panel configuration.

Configuration

Adding a Panel to an NV9000 Configuration

After launching NV9000-SE Utilities, choose 'Control Panels' from the Configuration pane in the navigation area. The 'Control Panels' configuration page appears:

Panel ID	Panel Name	Panel Type	Configuration Name	User	Description
6401	D640	NV9640	\\nvision\envy\usersys\live\D640.640	EnvyUser	

Click 'Add Control Panel' at the bottom of the configuration page. The 'Add Control Panel' page appears:

Type: NV9654
ID: 6541
Name: D654
User: EnvyUser

Configuration Options:

New, named: [] copied from: []
 Existing: []
 New (default), named: D654

Previous Next Finish Cancel Suffix Navigate

Choose "NV9654" from the 'Type' field. In the ID field, enter the panel ID you assigned to the panel while it was in setup mode. Give a name to the panel in the name field and select a user.

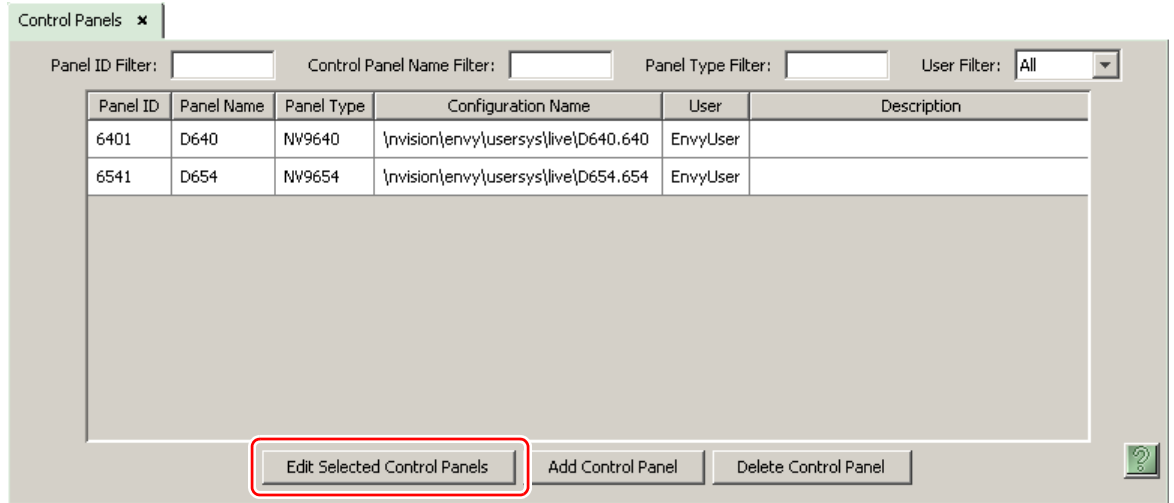
When you are creating a panel configuration you have 3 options. These options are presented in the 'Configuration Options' area:

- 1 Make a copy of an existing configuration file, giving it a new file name.
- 2 Use an existing configuration file. (This allows several panels to share a single configuration.)
- 3 Create an entirely new configuration file.

In the first and third cases, you will create a new configuration file whose name you designate. The file extension for an NV9654 configuration file is .654. Click 'Next' or 'Finish' to proceed.

- ▲ There are 2 other buttons: 'Suffix' and 'Navigate'. Pressing either of these buttons creates a button page template, not a panel configuration. See [Global Navigation](#) on page 43.

Return to the 'Control Panels' page to view your new entry. To edit an NV9654 configuration, either double-click its list entry or select the entry and then click 'Edit Selected Control Panels':



You will then see the panel configuration page for the selected NV9654.

The following section of this guide discusses using the panel configuration page in which you configure an NV9654.

- ▲ The entries in the control panel list can be (1) actual panel configurations (2) global navigation templates or (3) global "suffix" templates. See [Global Navigation](#) on page 43.

NV9654 Panel Configuration Page

This is the default NV9654 panel configuration page in NV9000-SE Utilities:

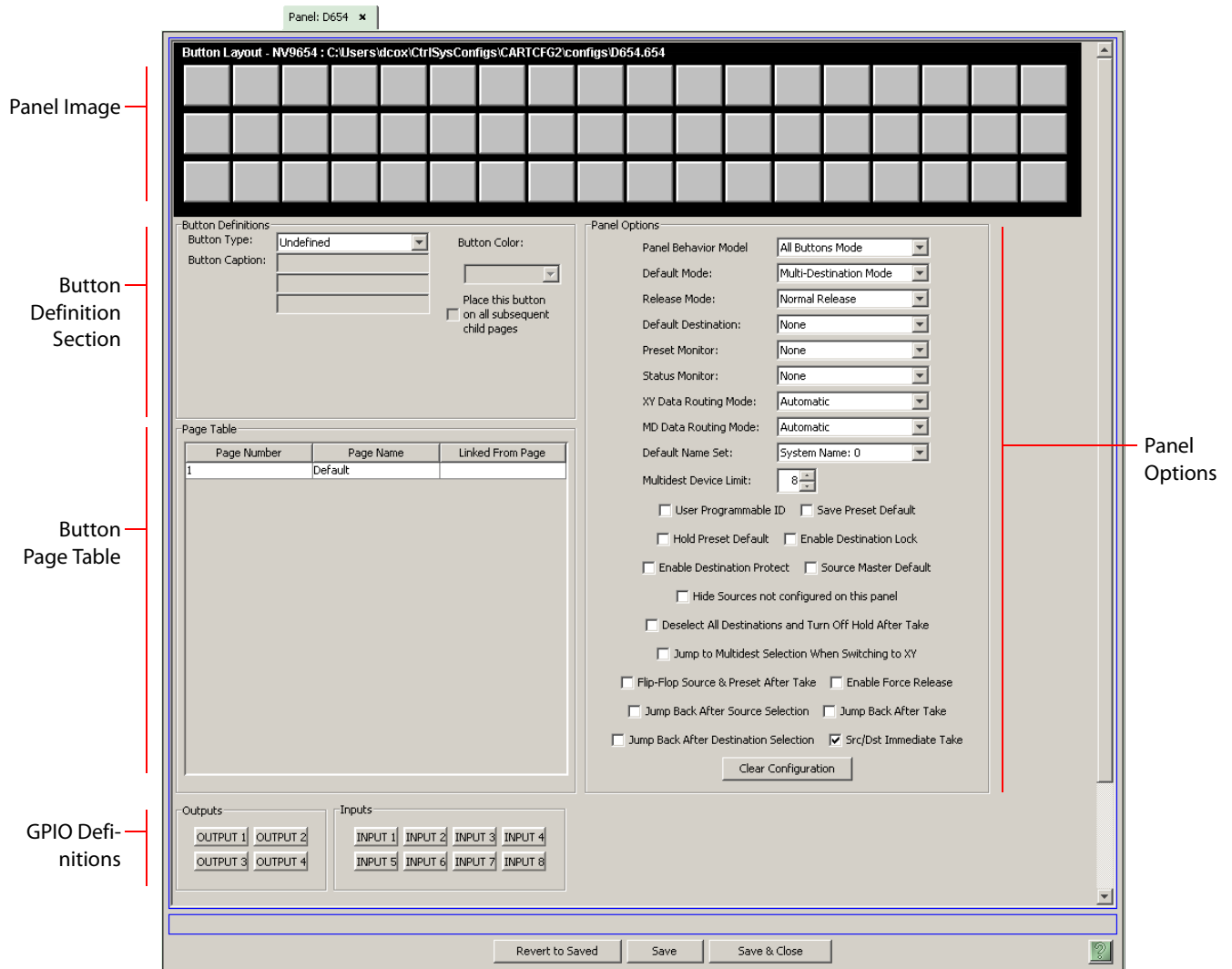


Fig. 4-1: NV9654 Configuration Page (Default, All Buttons Mode)

Similar pages exist for NV9654 suffix templates and global navigation templates. See [Global Navigation](#) on page 43.

Figure 4-1 shows the default panel configuration page, which has no buttons defined. After you configure buttons, and button pages, the appearance of the panel buttons will have changed.

At the bottom of the page are two important configuration buttons: 'Revert to Saved' and 'Save'. The 'Save' button commits modifications you have just made. The 'Revert to Saved' button restores the last saved version of the panel configuration, canceling any changes you just made. The 'Save and Close' button, also at the bottom, dismisses the configuration page in addition to saving the configuration changes.

The previous illustration showed the configuration page set up for 'All Buttons' mode. The panel can also be configured in 'Display and Buttons' mode, in which case the "display" section of the button matrix is delineated by a white line on the page:

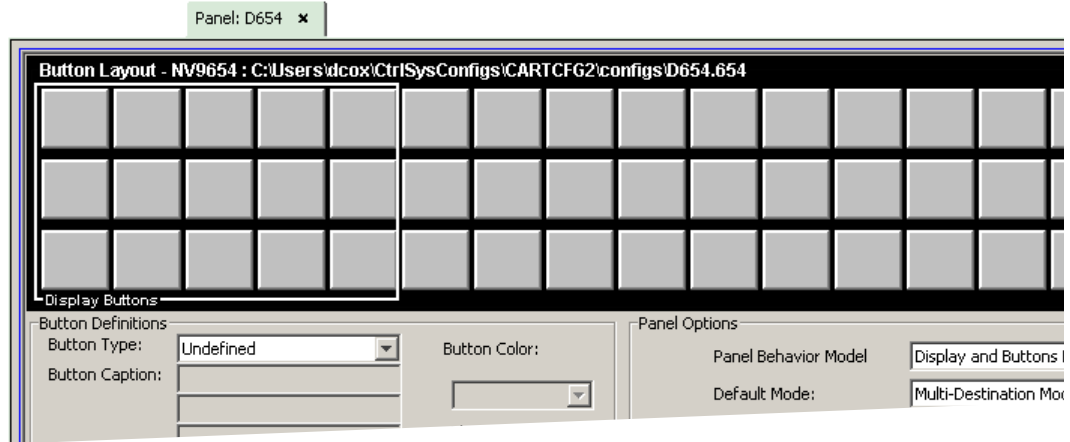


Fig. 4-2: NV9654 Configuration Page (Default, 'Display and Buttons' Mode)

The display section is the 5×3 array of buttons at the left.

Regions of the Configuration Page

There are 5 main regions:

- The NV9654 panel image.

The NV9654 has 54 LCD buttons in an 18×3 array. Click on a button to assign a function to it. In some cases, you can click or double-click a button to execute the button function. Double-clicking a 'Navigate' button, for instance, causes the button's "subpage" to appear.

Buttons can be illuminated in several colors: green, amber, yellow, red, blue, purple, and grey. There are 3 levels of illumination: high tally (bright), low tally (muted) and off. Undefined buttons are turned off (dark) on the actual panel and are gray in the configuration page.

Buttons in the 5×3 display section are always white (if the display is enabled). Operators can turn the display on and off. Configurators may assign button functions to the buttons of the display section for those occasions when the operator has turned the display off.

- ▲ The display is available only at the top-level page of the button tree.
- ▲ Buttons disabled during operation have text, but are dark on the control panel. Undefined buttons are dark and have no text.

- Button definition section.

In this section, configurators make button assignments, using its pull-down menus and text fields. It is here that the button captions are defined and the button color is specified. (For some button types, you cannot define a caption. The button text is defined by the system.)

See [Button Definitions](#), following.

- Button page table.

This section — the region below the button definition section — displays a list of the individual pages of the tree structure. The button page at the top of the list (or root of the tree) is called “Default.”

During operation, category buttons can display device subpages when pressed. Those subpages are not explicitly definable in NV9000-SE Utilities. The button page list does not display the device subpages accessed through category buttons. Category buttons can also display suffix pages when pressed. Suffix pages are included in the button page table.

See [Button Page List](#) on page 36.

- GPIO definitions.

In this section, configurers may define GPIO logic. The control panel has a rear connector that provides 4 relay outputs and 8 optically isolated inputs. See [GPIO](#), page 79, for more information. (Note that the graphical buttons represent *connector terminals* and not actual buttons.)

- Panel options.

In this section, configurers may specify the behavioral characteristics of the panel.

See [Panel Options](#) on page 21.

Configuration Tasks

The person configuring an NV9654 panel will want to consider how best to use the hierarchical nature of the button tree to support the devices and routers in the router control system at hand. The task is non-trivial.

In support of that effort, the configurer will do the following:

- Select panel options.
- Assign functions to buttons.
- Create pages (subtrees) of buttons. (Do this using the Navigation button type).
- Define logic for some or all of the tally inputs and outputs.

A configuration should lead the operator through required tasks. It is possible to make navigation through the tree structure of panel operations intuitive through the judicious use of color and text on the LCD buttons.

The configurer must keep in mind that the operator generally cannot view the entire button tree at a glance.

The configurer must also keep in mind that the operator must be able to reach any page in the tree. In particular, the operator, having navigated down a subtree, must have some way to navigate back up the subtree. There are several ways to ensure this. Two are listed here:

- Place a “Back” button on each subpage. The “back” button causes the NV9654 to redisplay the *previous* page.
 - Place a “Navigate” button on each page, where the navigate button causes the NV9654 to display a *specific* page.
- ▲ The operator can always return from system-generated pages (e.g., device lists) using the ‘back’ button.

The panel operator, in most cases, needs a 'Take' button and at least one selection button. In addition to their basic function, selection buttons provide feedback about the preset source device and level mapping. A 'Clear Preset' button is strongly recommended.

Commitment Buttons

Two buttons at the bottom of the configuration page are self-explanatory and present on most configuration pages:

- Revert to Saved. Press this button if you want to discard any recent changes you have made.
- Save. Press this button to commit all your recent changes.

Neither of these actions is reversible.

The 'Save and Close' button, also at the bottom, dismisses the configuration page in addition to saving the configuration changes.

Panel Options

The panel options section, at the right of the configuration page, has two parts: drop-down menus and checkbox options. These are the drop-down menus:

These are its drop-down menu options:

Behavioral Model	All Buttons mode	The panel does <i>not</i> include a simulated alphanumeric display. See Defaults on page 87.
	Display and Buttons mode	The panel <i>does</i> include a simulated alphanumeric display. It is possible for the operator to turn the display on and off.
Default Mode	X-Y Mode	Starts the panel in XY mode after a reset. See Defaults on page 87.
	Multi-Dest Mode	Starts the panel in multi-destination mode after a reset.
Release Mode	Normal Release	This panel can release "locks" and "protects" set by the designated user (at this panel or any other panel).
	Force Release	This panel can release locks and protects set by any user.

Configuration

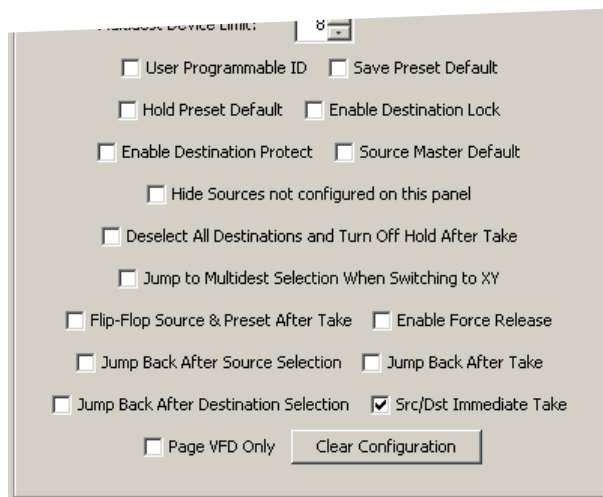
Panel Options

Default Destination	None	After a reset, the panel displays no destination device. (This is not recommended.)
	<device>	The Panel uses the specified device as the destination after a reset. (The 'Default State' button also returns the panel to this destination.)
Preset Monitor	None	The preset source video is not sent to a monitor.
	<device>	The preset source video for the selected destination appears on the specified monitor (device).
Status Monitor	None	The current source video is not sent to a monitor.
	<device>	The current source video for the selected destination appears on the specified monitor (device).
XY Data Routing Mode	Automatic	If a machine control (i.e., data) level is involved in a route, the system makes the route on the control level even if the control port is in use on the source or destination device. It breaks the previous control connection and then makes a new control connection for the route in progress.
	Semi-automatic (recommended)	<p>If the control port is in use for the source or destination device, the system takes all (selected) levels except control and allows the operator to perform the control level route by pressing 'Take' a second time. The operator may cancel the control-level take by pressing a button other than 'Take.'</p> <p>If the control port is not in use, the control level take occurs normally.</p>
	Manual	<p>If the control port is in use for the source or destination device, the system takes all (selected) levels except control. It does not perform the control level route.</p> <p>If the control port is not in use, the control level take occurs normally.</p> <p>To carry out a take on a machine control port that is in use, the operator must first free the port by performing a "tristate" take on the port, that is, taking the device (as a source) to itself (as a destination) on the control level.</p> <p>A take can occur on the machine control level if, in the status column of the display, the source entry is "FREE."</p>

MD Data Routing Mode	Automatic	If a machine control (i.e., data) level is involved in a route, the system makes the route on the control level even if the control port is in use on the source or destination device. It breaks the previous control connection and then makes a new control connection for the route in progress.
	Manual	<p>If the control port is in use for the source or destination device, the system takes all (selected) levels except control. It does not perform the control level route.</p> <p>If the control port is not in use, the control level take occurs normally.</p> <p>To carry out a take on a machine control port that is in use, the operator must first free the port by performing a "tristate" take on the port, that is, taking the device (as a source) to itself (as a destination) on the control level.</p> <p>An operator can determine whether the control level is free by switching momentarily to X-Y mode and examining the destination's levels.</p>
Default Name Set	System Name	<p>A list of "name sets" appears in the drop-down menu. The name sets can be defined under the System Management pane of NV9000-SE Utilities. Choose 'System Name' in this list if you do not want, or do not care about, device name aliases.</p> <p>Do not choose 'System Name' if you are configuring any 'Name Set Toggle' buttons.</p>
Multidest Device Limit	(Selectable in multiples of 8)	<p>The number of multi-destination entries you are allowing. Make this value equal to or greater than the number of MD devices you need. The default, and lowest value, is 8. The maximum is 512.</p> <p>(Elsewhere in the configuration, you will create a list of MD devices. You can leave some MD destinations unassigned.)</p>

Checkbox Options

The checkbox options section is at the bottom of the panel options section:



A check in the box enables the option. Clearing the checkbox disables the option.

By default, all the check box options are unchecked except 'Src/Dst Immediate Take'. That particular option is enabled by default.

The 'Clear Configuration' button removes *all* configuration data from the panel. The panel then has a blank configuration. If you click this button by mistake, you can regain the previously saved configuration by clicking the 'Revert to Saved' button.

The following items are the checkbox options:

- User-Programmable ID.
Allows the Panel ID to be changed locally at the control panel (in menu mode).
- Save Preset Default.
Makes 'Save Preset' mode active when the panel reverts to its default state (after a Default State button is pressed, or when the panel is restarted).
 - ▲ A 'Save Preset' button is needed only when you want the operator to be able to view or change the mode.
- Hold Preset Default.
Makes "hold" mode active when the panel reverts to its default state (after a Default State button is pressed, or when the panel is restarted).
 - ▲ **Note:** a 'Hold' button is needed only when you want the operator to be able to view or change the mode.
- Enable Destination Lock.
Check 'Enable Destination Lock' so that any 'Destination Lock' button on the panel will function.
- Enable Destination Protect.
Check 'Enable Destination Protect' so that any 'Destination Protect' button on the panel will function.
- Source Master Default.
Makes a control-level source the *controlling* device (or master device) by default. Otherwise, the destination is the master by default. (The option is specifically for use with NV9000 series machine control routers.)
"Source is master" is used for duplication, or broadcast routing, on a machine control level. "Destination is master" is for machine-to-machine editing. If you do not select the "source master default" option, you can place a 'Source is Master' button on the panel.
 - ▲ **Note:** a 'Source is Master' button is a toggle that reverses the direction of data routing for devices used in data level (machine control) takes.
- Hide sources not configured on this panel.
Causes the names of source devices that are not presently configured for this particular panel to be effectively hidden. When another panel changes the source to one not configured for this panel, this panel displays asterisks instead.
- Deselect all destinations and turn off hold after take.
After selecting many MD destinations (with 'Hold' mode on), it can be time-consuming and error-prone to find them all (and no others) to deselect them after a take. When you enable this option, the NV9654 does exactly that (and turns off hold mode).

- Jump to multi-dest selection when switching to XY.
Makes the currently selected multi-destination device the current destination when you switch from MD mode to X-Y mode.
 - ▲ The X-Y destination shown will be the default destination when the panel is in MD “hold” mode and multiple destinations are selected — if a default destination is specified in the configuration. Otherwise, no destination will be selected.
- Flip-flop source and preset after take.
Swaps the preset source and the currently routed source for this destination after a take.
- Enable force release.
Allows operators to execute a force release.
- Jump back after source selection.
After you make a source selection, the panel reactivates the *default* button page.
- Jump back after take.
After you press a ‘Take’ button, the panel reactivates the *default* button page.
- Jump back after destination selection.
After you make a destination selection, the panel reactivates the *default* button page.
 - ▲ Jumping back to the default page is usually helpful, but in some configuration designs, might not be. You can design your panel configuration to take advantage of the jump-back behavior.
- Src/dst immediate take.
A ‘Src/Dst’ button connects a source to a destination. When this box is checked (as it is in the default NV9654 configuration) the button performs an immediate take. When the box is clear, the button sets up the preset and the operator must press a ‘Take’ button to complete the take.
- Page VFD only.
The panel pages the display (here called a VFD) only and does *not* page selection buttons. (See [Selection Buttons](#) on page 38.)

Button Definitions

There are four classes of button functions:

- Dedicated functions, such as ‘Default State’ or ‘Chop’.
- Variable functions, such as ‘Category’ or ‘Source’. With this type of button, additional selections are needed to complete the button configuration.
- Special functions, such as ‘Navigate’ and ‘Back’. These functions allow the panel operator to move from one button page to another. (The Navigate button is unique: it initiates a dialog in which you create a subtree.)
- System-generated button functions. These are buttons that are generated dynamically (by the router control system) during operation. An example of system-generated buttons is a device list generated when the user presses a category button. The set of devices in a category can change over time (as the configuration database changes); the NV9654 device list changes also.

The number and names of categories can also change over time and the NV9654 will track those changes too.

Note

Certain button fields contain a colon (:) and number after the data in the field. The number is the record ID of the object in the NV9000 configuration database. The record IDs can be ignored but might be of some use when the configurer is searching for items in the configuration database.

There are different sets of button types for global suffix pages and for global navigation pages. See [Global Navigation](#) on page 43.

Button Specification

The button definitions section has several controls:

The screenshot shows a configuration window titled "Button Definitions". It contains several controls: "Button Type" is a dropdown menu set to "Source/Destination"; "Button Caption" consists of three stacked text boxes containing "Sample", "Button", and "Text"; "Level Set Filter" is a dropdown menu set to "None"; "Src Device" is a dropdown menu set to "ARC 402: 7"; "Dst Device" is a dropdown menu set to "DDR 405: 605"; "Button Color" is a dropdown menu set to "Green"; there is an unchecked checkbox labeled "Place this button on all subsequent child pages"; and there is a checked checkbox labeled "Use custom button text".

The controls vary according to the button type.

- | | |
|----------------|---|
| Button Type | A pull-down menu where you may select a button type. |
| Button Caption | Three text boxes in which you can enter three lines of button text up to 8 characters each. SE provides a default for the button caption.
Some buttons do not allow you to enter button text. Category buttons, for example, use the category name as the button text. |
| Button Color | A pull-down menu where you can select a button color: amber, blue, green, grey, purple, red, or yellow: |

The close-up shows the "Button Color:" label above a dropdown menu. The menu is open, showing a list of color options: Green (selected), Amber, Blue, Green, Grey, Purple, Red, and Yellow.

On the panel, each of the 7 defined colors has two brightness levels: "high-tally" and "low-tally." Buttons are dark if their functions are disabled. Buttons are low tally if they are available and unselected. Buttons are high tally when they are selected. (An exception to this is the LCD brightness submenu when the panel is in menu mode.) Some button types are never high-tally.

- Check box "Place this button on all child pages." When the operator presses a navigation button, its target page appears on the buttons. Any page can have multiple navigation buttons and therefore multiple target pages. If you check this option, the button you are defining will occur, *in the same position*, on all pages in the subtree available through the navigation button. A "back" button is a good candidate for such a button. The back button returns the operator to the previous page. (Back buttons are automatically placed on list pages and most navigation target pages.)
- Check box "Use custom button text." This checkbox is not present for all button types. The option allows you to define specific button text for certain buttons such as the 'Src/Dst' button. By default, the button gets the source name and destination name as text. The option, when checked, overrides the default.
- Be careful: unchecking this box alters the text you entered.

When you choose a button type, additional drop-down menus can appear, depending on the button type, allowing you to further specify the button's behavior. Available options and selections vary from button type to button type.

There are other button definition options that become available when you are defining a category button or a global navigation button and you have defined one or more suffix pages or global navigation pages. These options are described under [Global Navigation](#) on page 43.

The Navigate button is a special case. It invoking an "Edit Navigate Button" dialog during configuration. See ['Edit Navigation Button' Dialog](#), on page 34.

Button Types

Note that different subsets of these button types are available when you are defining a global suffix template or a global navigation template. See [Global Navigation](#) on page 43.

These are the button types available for NV9654 configurations:

Type	Description
Back	<p>The 'Back' function places the predecessor of the current button page on the panel.</p> <p>The panel software can introduce a "back" button if an automatically generated list has more entries than can fit on a page.</p>
Broadcast	<p>On the machine control level, the button enables a broadcast take to an <i>additional</i> controlled device, after a broadcast route has been initiated with a "source is master" control-level take to the <i>first</i> controlled device.</p> <p>The button is useful in dubbing applications or when a backup (redundant) device is in use. See Broadcast Routes on page 71.</p> <p>See also the Source Master button, following.</p>

Type	Description
Category	<p>Displays a category's device list.</p> <p>When you assign a category button, two additional drop-down menus appear: 'Src Category' and 'Dst Category'. Choose a category from one of the category lists. When you choose a source category, the destination categories become inaccessible and vice versa: a category button must be either a source category or a destination category. You must choose 'None' in either category list to switch to the other category list.</p> <p>When you choose either 'Src Category' or 'Dst Category', the 'Use global suffix page to select devices' checkbox becomes enabled and a 'Suffix Page' drop-down menu appears. You can select a suffix template in the drop-down menu. If you choose a suffix template, when the operator clicks the category button, the suffix page appears. If you do not, a list of devices in the category appears. See Global Navigation on page 43 for further detail.</p> <p>The default button text will be the category name. You can override the default text.</p>
Chop	<p>When a chop function is supported by the router, the button is a toggle that enables and disables rapid switching of the selected destination device between the current source and the preset source. This chop function is used to test system timing.</p>
Clear Preset	<p>Erases preset entries, while leaving the panel in the same mode. We recommend you use this button because it is a "safety" feature.</p> <p>The clear preset button has the side effect of switching off 'Save Preset' mode.</p>
Default State	<p>Returns the panel to its most recent power-up state. That is called the <i>default state</i>.</p>
Destination	<p>Selects a destination.</p> <p>When you assign a destination button, a drop-down menu appears: 'Destination Device'. Choose a device from the list.</p> <p>The 'None' entry is merely a placeholder. Do not choose 'None'.</p>
Destination Lock	<p>Sets or removes a "lock" on the current destination device. The lock can be removed only by the user that originally set the lock, or by a panel that has "Force Release" enabled.</p> <p>When the panel has its display area enabled, an "L" appears, in MD mode, under the "L" column (of the "S I L B" buttons) on the rows representing locked <i>destinations</i>. In X-Y mode, an "L" appears under the "L" column on the rows representing locked <i>levels</i>.</p>

Type	Description
Destination Protect	<p>Sets or removes a “protect” on the current destination device. The protect can be removed only by the user that originally set the protect, or by a panel that has “Force Release” enabled.</p> <p>Note: a protect prevents <i>others</i> from routing to a destination; a lock prevents <i>anyone</i>— even the user who issued the lock— from routing to the destination.</p> <p>When the panel has its display area enabled, a “P” appears, in MD mode, under the “L” column (of the “S I L B” buttons) on the representing locked <i>destinations</i>. In X-Y mode, a “P” appears under the “L” column on the rows representing locked <i>levels</i>.</p>
Free Source	<p>Defines a phantom device that can be used to release or “free” devices on the machine control level. A free source is also used with tielines to free the tieline for others to use. The free source is configured in the <i>Level Set Details</i> page of NV9000-SE Utilities.</p>
[Forward]	<p>The panel software can introduce a “forward” button if an automatically generated list has more entries than can fit on a page.</p> <p>A ‘Forward’ button displays and activates the next button page in an automatically generated sequence.</p> <p>There is no explicit ‘Forward’ button type; configurers cannot create forward buttons explicitly.</p>
Global Navigate	<p>A global navigation button is very much like a navigation button to the operator. However, during configuration, it selects a previously defined “global navigation” template. The template itself may have structure that ordinary button pages have. It can include any button type except additional global navigate buttons. See Global Navigation on page 43.</p>
Hold	<p>Toggles the panel in and out of “hold” mode. In multi-destination mode, hold mode retains destination selections after a take. In X-Y mode, hold mode retains breakaway levels after a take. (There are other effects. See Selection Buttons on page 38.)</p>
Information	<p>The information button displays auxiliary information about level mapping and perhaps other matters. The operator presses the information button once to see the information and again to hide the information.</p> <p>An information button remains disabled (dark) until there is information to display. When there is information to display, an asterisk appears in the “I” column of the panel’s display (when it is turned on). The “I” column is found on the “S I L B” buttons of the display.</p>
Level Map	<p>Cross-connects levels (in the same physical router). The function is typically used to shuffle audio channels, for example, to connect AES1/2 to AES3/4.</p> <p>The Level Map mode is cancelled when the next normal take is performed involving the selected destination.</p>

Type	Description
Menu	<p>This button puts the NV9654 panel in menu mode and displays a menu on the LCD buttons that provides access to a variety of panel options. Place the button on the panel only if you want the user to have access to the menu.</p> <p>By pressing certain buttons, the user makes menu selections and may enter data (such as panel ID) or change LCD brightness values. See Menu Mode on page 74.</p>
Name Set Toggle	<p>The button toggles the panel between its default name set and the “system name” set. One or the other becomes the active name set.</p> <p>The button definition has no fields to configure.</p> <p>If the default name set is the system name set, the button would be a no-op. Therefore configurers should not create a ‘Name Set Toggle’ button if the default name set is ‘System Names’.</p> <p>The status, preset, or destination displays use the active name set — either the default name set (aliases) or the system name set. However, that when the panel is displaying aliases, and a device does not have an alias, the panel displays the system name.</p>
Navigate	<p>During operation, a navigate button selects and displays a “target” button page. During configuration, a navigate button presents a dialog in which you can enter details of the target page. After you do so, SE displays the target page’s buttons on the panel image and adds the subtree to the tree window in the lower left corner if it is not there.</p> <p>(You’ll use the navigate function to create new button pages.)</p> <p>The default text for a Navigate button depends on what you assign it. Sometimes it is “Navigate.” You will probably want to change it to something meaningful to operators.</p> <p>See ‘Edit Navigation Button’ Dialog on page 34 for detail.</p>
Page Down	<p>Scrolls a list <i>down</i>. Lists include categories, source devices, and destination devices. Scrolling is necessary when the list exceeds the number of buttons available for the list.</p> <p>‘Page Down’ also scrolls through multi-destination devices in multi-destination mode and through levels in X-Y mode.</p>
Page Up	<p>Scrolls a list <i>up</i>. Lists include categories, source devices, and destination devices. Scrolling is necessary when the list exceeds the number of buttons available for the the list.</p> <p>‘Page Up’ also scrolls through multi-destination devices in multi-destination mode and through levels in X-Y mode.</p> <p>When the operator is displaying a list of devices from a category, the ‘Page Up’ button will return the operator to the page containing the category button.</p>
Panel Lock	<p>Prevents accidental changes to the panel settings, especially router crosspoints. When the panel is locked, the button array becomes blank except for the Panel Lock button which becomes high tally red. Pressing the Panel Lock button again reverts the panel to its previous mode.</p>

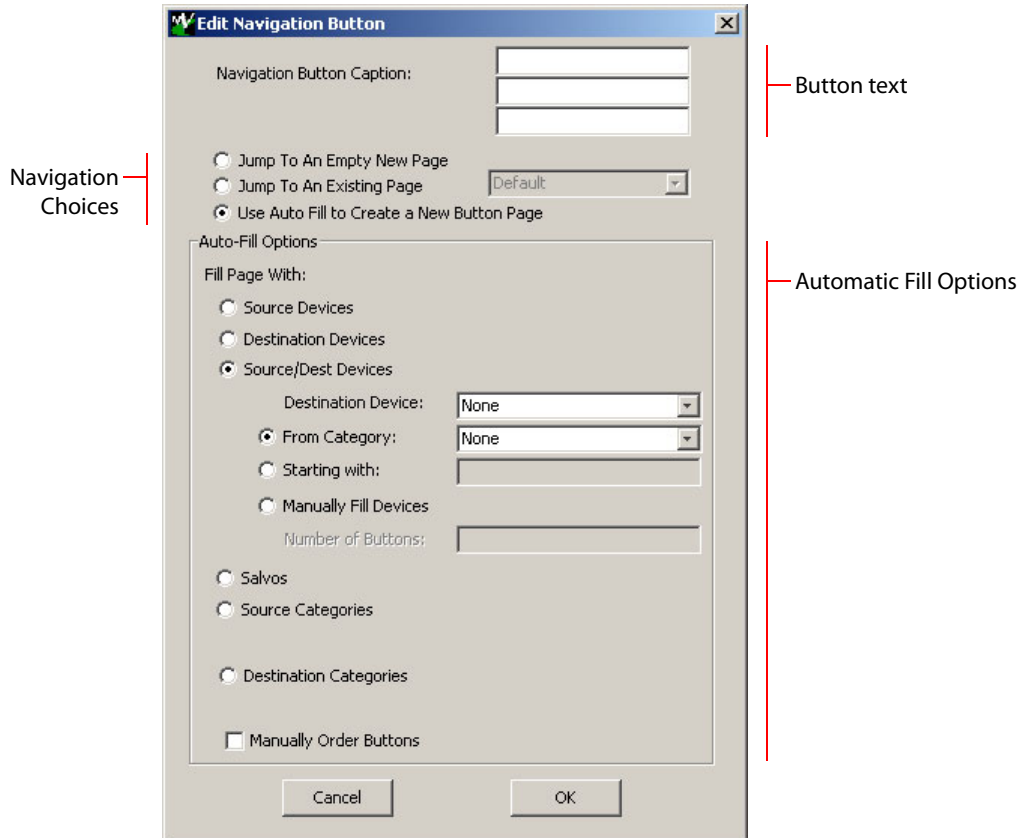
Type	Description
Preset Release	Removes locks and protects from preset source devices. This button is not needed if source locks and protects are not used in your system.
Previous Source	<p>Presets the previously routed source to the currently selected destination. The operator must next press 'Take' to restore the previous source. This function is useful when a user makes a route in error.</p> <p>The button does not restore the previous destination. If the user changed the destination and presses 'Previous Source', the take will not restore the previous route.</p>
Quick Source	<p>A quick source button selects a source and performs an immediate take.</p> <p>When you assign a quick source button, a drop-down menu appears in which you choose a source device. (The 'None' entry is merely a placeholder. Do not choose 'None'.)</p>
Salvo	<p>Executes a salvo.</p> <p>When you assign a Salvo button, a drop-down list appears in which you select a system salvo (previously defined in NV9000-SE Utilities).</p> <p>The 'None' entry is merely a placeholder. Do not choose 'None'.</p> <p>(You can cause the panel to generate salvo buttons automatically using the options of the 'Edit Navigation Button' dialog when you create a navigation button.) See 'Edit Navigation Button' Dialog on page 34.</p>
Save Preset	When this function is enabled (its button is high tally), whatever is on preset is retained (on preset) after a take. When the function is disabled (its button is low tally), preset is cleared after a take.

Type	Description
Selection	<p>Typically, at least one button page should provide a set of selection buttons. Operators press selection buttons to select levels (when the panel is in XY mode) or to select MD device (in MD mode). Each selection button represents one level or one MD device.</p> <p>You may configure any number of selection buttons (on any button page). The selection buttons can be arranged anywhere on the button page.</p> <p>When there are more levels, or more MD devices, than buttons on a page, the panel enables scrolling. The operator presses 'Page Up' or 'Page Down' to scroll through the levels or MD devices to make selections.</p> <p>▲ If the panel is configured so that both the display and the selection buttons scroll, the number of selection buttons on a page should be exactly 8.</p> <p>See Selection Buttons on page 38 for further detail.</p> <p>During configuration, when you assign a selection button, an additional drop-down menu appears in the button definition area: 'Display Index'. An 'Edit Multi-Dest Devices' button also appears.</p> <p>The drop-down menu for the button's <i>display index</i> has as many entries as the panel's 'MultiDest Device Limit' option. The number of selection buttons would usually be much smaller than the MD device limit. Choose consecutive display indexes from 1 to the number of selection buttons on the page.</p> <p>Use the 'Edit Multi-Dest Devices' button to define MD devices. They are assigned to selection buttons in the order in which you define them. See Multi-Destination Configuration on page 42.</p>
Source	<p>A source button selects a source. (Note that a quick source button selects a source and also performs an immediate take.)</p> <p>When you assign a source button, a drop-down menu appears: 'Source Device'. Choose a device from the list. (The 'None' entry is merely a placeholder. Do not choose 'None'.)</p>
Source Master	<p>Means "source is the master" and makes the source device the master during machine control operations. Otherwise, the destination is the master.</p> <p>The button is a toggle: Press it once to make the source the master (it goes high-tally); press it again to make the destination the master (the button is low-tally).</p> <p>A panel option allows you to make "source is master" the default. In this case, the button still toggles between "source is master" and "destination is master," and the button, if present, is high-tally by default.</p> <p>The 'Source is Master' button is also used to initiate "broadcast" machine control routes. See Broadcast Routes on page 71.</p>
Source/ Destination	<p>A source/destination button selects both a source and a destination at one time. Source/destination buttons can be configured to perform immediate takes. (It is a NV9654 panel option.) If they are not so configured, the operator must also press a 'Take' button to effect a take.</p>

Type	Description
Take	<p>In X-Y mode, a take button switches the preset source device to the selected destination device on selected levels.</p> <p>In MD mode, a take button switches the preset source device(s) to the selected destination device(s) on all levels.</p> <p>In most cases, configurers should provide the operator a 'Take' button.</p>
Toggle Display	<p>When the panel is operating under 'Display and Buttons' mode, this button turns the display portion of the button array on or off.</p> <p>When the "display" is off, the buttons used for the display perform other assigned functions, as configured in NV9000-SE Utilities.</p>
Undefined	<p>Makes the button undefined and inactive. On the actual panel, it will remain unlit (dark).</p>
VFD/SEL Toggle	<p>The button is a toggle. In one state, it makes the display (called a VFD for some reason) scroll when the operator presses 'Page Up' or 'Page Down'. In the other state, it makes the items on selection buttons scroll.</p> <p>See Selection Buttons on page 38.</p> <p>See Scrolling on page 39.</p> <p>See Panel Options on page 21.</p> <p>This button has no configuration options. The button legend is fixed. Depending on which state the button is in, it will read "Paging VFD Display" [sic] or "Paging Select Buttons."</p>
X-Y Display	<p>This button displays the current source and current destination. It is usable in both X/Y mode and MD mode. It is very useful when the panel has no display.</p> <p>It might be appropriate to define an 'X-Y Display' button in the display area. When the display is turned off, the button would become visible.</p>
XY/MD Mode	<p>Switches the panel between X-Y mode and multi-destination mode.</p> <p>The configuration page lets you specify a color for this button, but the color you specify is ignored. The button is always green for XY mode and amber for multi-destination mode.</p>

'Edit Navigation Button' Dialog

During configuration, when you choose 'Navigate' for a selected button, NV9000-SE Utilities displays an 'Edit Navigate Button' dialog in which you specify the navigation button's details:



At the top, this dialog presents 3 lines on which you can enter text for the button caption. In this dialog, the 3 lines you enter here are concatenated to form the name of the page in the button page table and *might be* the button caption, depending on context.

- ▲ The button caption is independent of the page name. You can change either without affecting the other.

The dialog has 3 navigation choices:

- Jump to an empty new page.

This option creates a new page in the button tree. During operation, the navigation button you are creating will cause the NV9654 to display, or jump to, that page. The name of the page and the button caption are what you type in the three lines for the button caption. You can change the name of the page in the button page list. At the time you create it, the page is empty. After the page is created, you can select it at any time and edit its buttons.

- Jump to an existing page.

This option does **not** create a new page in the button tree. The navigation button you are creating will cause the NV9654 to display the page you select in the associated drop down menu. The button caption is what you type in the three lines for the button caption.

- Use “auto fill” to create a new button page.

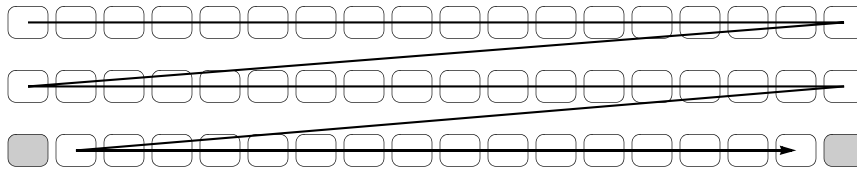
NV9000-SE Utilities (SE) creates at least one new button page, filling the page(s) with button functions according to the fill options you specify. Automatic fill has several sub-options:

Source buttons	Salvo buttons
Destination buttons	Source category buttons
Source/destination buttons	Destination category buttons

Automatic fill has a “manually order buttons” option where you can reorder the list items as you wish. See [Automatic Fill Options](#), following.

Automatic fill creates as many new pages in the button tree as required to support the number of fill items. If the number of items is greater than 29, SE places 28 items on a page where the bottom left button is a back button and the bottom right button is a “forward” button. The last page of the automatic fill will not have a forward button and might not be completely filled.

The fill occurs in left-to-right, top-down, order:



During operation, the navigation button will cause the NV9654 to display the first of the auto-fill pages. The operator uses the back and forward buttons to scroll through the list.

The button caption is what you type in the three lines for the button caption. You can change the names of the automatic fill pages in the button page list. After the pages are created, you can select any of them at any time and edit its buttons.

During configuration, you can double-click a navigation button to view and edit its target page. Any page can have navigation buttons. You can also select pages by double-clicking on the page's page number field in the button page list.

Automatic Fill Options

- Source Devices

SE assigns sources to buttons in new button subpage(s). If it has too many sources to fit on the subpage, it creates further subpages as needed. The software adds 'Back' and 'Forward' buttons when more than one subpage is required.

There are 3 sub-options under 'Source Devices':

- 'From Category'. Specify a category other than 'None'. The fill list will include all the devices in the category.
- 'Starting with'. Specify an initial substring. For example, if you specify "V," all sources whose names start with "V" are included in the list.
 - ▲ If you leave the 'Starting with' field blank, the page will list all devices.
- 'Manually Fill Devices'. Specify the number of buttons you want to be assigned. The software creates as many subpages as are required to hold the buttons. The buttons are source buttons, but remain blank so that you can assign sources to them manually.

- Destination Devices
Automatic fill using destination devices is the same as for source devices, except that destination devices are chosen. In the case of manual fill, blank destination buttons are created.
- Source/Dest Devices
This option creates subpages of 'Source/Destination' buttons. All use the same destination, which you specify in the 'Destination Device' field that becomes enabled for this option. The sources can vary according to the sub-option:
 - 'From Category'. The fill list will include all the source devices in the category you choose.
 - 'Starting with'. Specify an initial substring. For example, if you specify "CA," all sources whose names start with "CA" are included in the list.
 - ▲ If you leave the 'Starting with' field blank, the page(s) will create 'Src/Dst' buttons for all source devices.
 - 'Manually Fill Devices'. Specify the number of buttons you want to be assigned. The software creates as many subpages as are required to hold the buttons. The buttons are 'Src/Dst' buttons, but remain blank so that you can assign sources and destinations to them manually.
- Salvos
SE assigns salvos to buttons in new button subpage(s). If it has too many salvos to fit on the subpage, it creates further subpages as needed. The software adds 'Back' and 'Forward' buttons when more than one subpage is required.
- Source Categories
SE assigns source categories to buttons in new button subpage(s). If there are too many source categories to fit on the subpage, it creates further subpages as needed. The buttons are labeled with the category names. You can edit the button captions. The software adds 'Back' and 'Forward' buttons when more than one subpage is required.
Categories that are both source and destination categories are included.
- Destination Categories
Automatic fill using destination categories is the same as for source categories, except that destination categories are chosen.
- Manually Order Buttons
If you check the 'Manually order buttons' box, SE presents a dialog that lists the sources, destinations, categories, or salvos you selected. You may reorder the items. To do so, **double-click** on a row in the ordered list and drag it up or down to the position that you want. The new position will be indicated by a slightly heavier black line. The row you selected is repositioned where the black line is when you release your mouse button.

Button Page List

This section is the region below the button definition section. It lists the pages of the button tree. It has 3 columns: Page Number, Page Name, and "Link to Page Num(s)."

The button page at the top (or root) of the tree is called "Default." Initially, the tree has just the default page, until you add other pages.

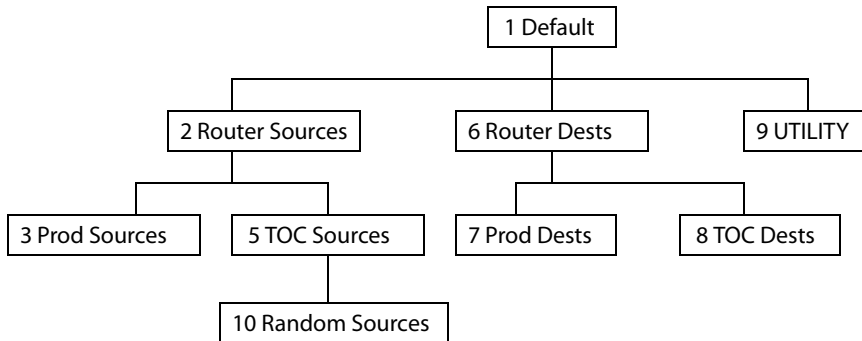
To delete a page or pages from the tree, select the pages in the button page list, right-click the list, and choose one of the deletion commands from the context menu that appears.

- ▲ Be aware when deleting pages from the tree that the deletion does **not** remove any navigation buttons from any button page.

This is a sample of a button page list:

Page Number	Page Name	Links to Page Num(s)
1	Default	
2	Router Sources	1
3	Prod Sources	2
5	TOC Sources	2
6	Router Dests	1
7	PROD Dests	6
8	TOC Dests	6
9	UTILITY	1
10	Random Sources	5

It represents this tree structure:



You can change the name of a page by double-clicking the page's name field and editing its text. Changing the name of a page does not cause a change to the caption of the navigation button and vice versa.

During configuration, you will use 'Navigate' buttons to create new pages. During configuration, you can double-click a 'Navigate' button to jump to its page.

During operation, panel operators will press navigation buttons, global navigation buttons, or category buttons to jump to other pages.

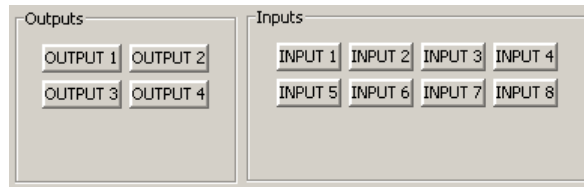
- ▲ Navigation buttons do not jump to global suffix pages or global navigation pages. Only global navigation buttons jump to global navigation pages; only category buttons jump to suffix pages. However, the operator will probably see no appreciable difference between the button types. See [Global Navigation](#) on page 43.

When you double-click the page number field of a page you want to edit, the image of that page appears in the panel graphic area.

The "Links to Page Num(s)" column lists, for any page, the other pages that refer to it. Using the links column you can mentally examine the tree structure or create a sketch of the tree structure. You might note that if the link field of a page is empty, the page is inaccessible during operation. (The exception is the default page which is always available after reset. It might become unavailable in a configuration that has subpages with no 'back' buttons.)

Tally (GPIO) Window

Below the tree window is the tally section of the configuration page.



It has two sections: inputs and outputs. By clicking on one of the input or output buttons, you can configure the input or output.

(The NV9654 has no actual tally buttons. Instead, these buttons represent the ports of the DB25 connector at the rear of the panel. The buttons are present in the configuration page to allow you to configure the tally interface.)

If you are interested in configuring the tally interface, read Chapter 6, [GPIO](#), on page 79.

Selection Buttons

Operators use selection buttons to select *levels* when the panel is in X-Y mode and *MD devices* when the panel is in MD mode. Selection buttons also provide feedback (e.g., source and destination mnemonics on the face of the buttons) when the operator is performing takes.

A set of selection buttons supports (1) level selection in XY mode and (2) device selection in multi-destination mode.

You should configure at least one selection button (for feedback). You may configure as many selection buttons as are suitable for your system. For instance, if your system has a maximum of 12 levels for any device, it might make sense to have 12 selection buttons.

Operators can scroll through multiple pages of levels in X-Y mode and through multiple pages of devices in MD mode. There are 3 options for scrolling:

- 1 Scrolling the display only. The items on the selection buttons do not scroll.
When an operator scrolls the display *only*, it scrolls by 8 lines at a time.
- 2 Scrolling the selection buttons only. The items on the display do not scroll.
When an operator scrolls the selection buttons *only*, they scroll modulo the number of buttons. For instance, if there are 9 buttons, they scroll in groups of 9 items.
- 3 Scrolling both the display and the selection buttons at the same time. This behavior can occur only when the panel has no 'VFD/SEL Toggle' button and the 'Page VFD Only' panel option is not in effect.
When both the display and the selection buttons scroll, they scroll by 8 items, regardless of the the number of selection buttons. In this case, if the number of selection buttons is not 8, the selection buttons will show undesirable results.

If the panel has a 'VFD/SEL Toggle' button, operators can switch between options 1 and 2. The button will read either "Paging VFD Display" [sic] or "Paging Select Buttons."

One of the panel configuration options is 'Page VFD Only'. When this option is selected, the panel never scrolls selection buttons.

▲ Here the term "VFD" means display.

Selection (of levels or MD devices) is affected by 'Hold' mode. (See the [Information](#) button, page 29.) The user may toggle hold mode at any time. Using the selection buttons follows hold mode or normal mode, whichever is in effect at the moment. Normal mode is the default— unless you specify otherwise in the [Panel Options](#).

Scrolling

The operator might wish to scroll (or page) through a list of levels (in XY mode) or destinations (in MD mode). Depending on your configuration, either the display, or the visible selection buttons, or both can scroll. The operator uses the 'Page Up' and 'Page Down' buttons to do so. This is a summary of the options:

- Page VFD only.
This is a configurable panel option, where the selection buttons never scroll.
- The panel has a 'VFD/SEL Toggle' button.
Either the display will scroll or the selection buttons will scroll depending the state of the 'VFD/SEL Toggle' button.
The display will scroll in increments of 8 lines. The selection buttons scroll modulo the number of selection buttons.
- Both the display and the selection buttons scroll in increments of 8.
The panel has no 'VFD/SEL Toggle' button and was configured without the 'Page VFD Only' option. In this case, the panel should have exactly 8 visible selection buttons. Otherwise, the selection buttons will show faulty results.

If the panel is configured in 'All Button' mode, there is no display, there is no 'Page VFD Only' option, and there is no 'VFD/SEL Toggle' button type. Scrolling can occur only on selection buttons.

In 'Display and Buttons' mode, if the operator turns off the display, it nevertheless scrolls (or not) as it would if it were visible. When the operator turns the display on again after scrolling, it reappears correctly.

Selection Button Behavior

XY Mode

When the panel is in XY mode, a set of selection buttons presents a set of virtual levels. The levels displayed on the buttons correspond to the levels in the level set of a selected destination device. If a selection button is dark and blank, the level does not exist in the level set. If a selection button is dark, but has text, the level exists, but is not defined for the selected device.

If a selection button is high-tally, the level is selected. If a selection button is low-tally, the level is not selected.

If there are more levels than selection buttons, the 'Page Up' and 'Page Down' buttons activate and the operator can scroll through the levels.

MD Mode

When the panel is in MD mode, a set of selection buttons presents a set of MD devices.

If a selection button is blank, an MD device was not assigned to it. If a selection button is high-tally, the MD device is selected. If a selection button is low-tally, the MD device is not selected.

If there are more destinations than selection buttons, the operator can scroll through the destinations using 'Page Up' and 'Page Down' buttons. Including those buttons on the button page that has the selection is strongly recommended.

- ▲ Note that the maximum number of MD destinations is configured in multiples of 8, from 8 to 512.

Populating the MD Device List

The 'Edit Multi-Destination Device' button appears when you are configuring a selection button. Click this button to get the 'Multi-Destination Entry' window. The window presents a list of all destinations on the left and a set of MD devices at the right. The MD device set is initially empty and becomes populated as you add destination devices from the left. You can add devices in any order. The order is preserved and is the order in which the MD devices appear on the selection buttons under scrolling.

See [Multi-Destination Configuration](#) on page 42.

Selection

XY Mode—Normal

When the operator selects a destination, all selection buttons that have levels defined for the destination turn on (high-tally). The operator may select or deselect any levels as required, by pressing selection buttons and perhaps scrolling the display.

- ▲ Note that if the operator selects a level when all levels are on, all the *other* levels become unselected (low-tally).

Selecting a new destination again turns on all selection buttons that have levels defined.

- ▲ Source/Destination buttons are "all level"—not subject to level selection.

XY Mode—Hold Mode

- ▲ In hold mode, when the operator selects a destination, previously deselected levels (defined for the destination) remain selected for additional takes and previously unselected levels remain deselected. (Individual levels turn on or off as the user selects them.)

MD Mode—Normal

- ▲ When the user selects an MD device, all selection buttons are mutually exclusive: when the operator presses one button, any others that were selected turn off. To perform MD takes, the operator alternately selects an MD device and then a source until all intended devices have been preset. Then the operator presses 'Take'.

(In normal mode, any selected MD devices become unselected after the take.)

MD Mode—Hold Mode

In hold mode, selection buttons are **not** mutually exclusive. To perform MD takes, the operator selects one or more MD devices. All of them turn on (high-tally). The operator then selects a source (which becomes preset for all the selected devices).

The operator can preset another source to another set of destinations by deselecting selected destinations, selecting other destinations, and selecting another source.

When all intended destinations are preset, the operator then presses 'Take'.

(In hold mode, the MD devices remain selected after the take.)

Display Indexes

You can configure selection buttons on any of your button pages. During configuration, when you assign a selection button, an additional drop-down menu appears: 'Display Index'.

The drop-down menu for the button's *display index* has as many entries as defined by the panel option 'MultiDest Device Limit'. If that limit is 64, then the list has 64 entries.

That number is an upper limit to the number of selection buttons on a page of the panel.

Usually the button page will have a small number of selection buttons, typically 8. Each selection button should have a index from 1 to the number of selection buttons on the page.

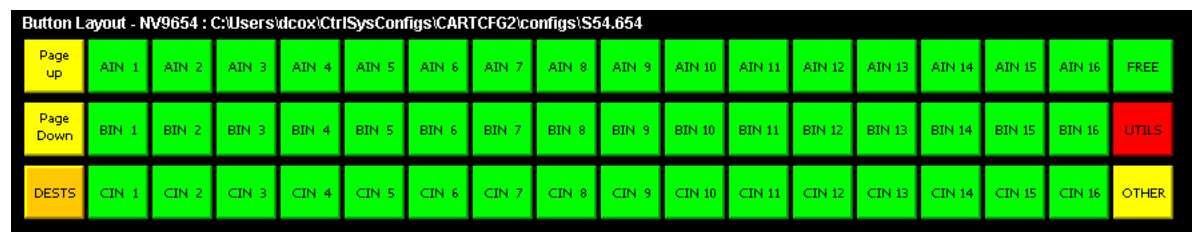
It is possible for two or more selection buttons to have the same display index. The same information would be display on on both.

Single-Destination Mode

Single-destination mode (a.k.a. "single-bus" or "button-per-source" mode) can be emulated in either X-Y mode or MD mode.

Single-destination mode is not a distinct mode. It can be blended with either of the other two modes. You can create many different forms of "single-destination" mode. This mode *need not have just one destination*.

The simplest form presents a group of "quick source" buttons. This illustration shows 49 quick source buttons, coupled with a few navigation buttons for (1) selecting a destination and (2) other functions:



Misc. buttons

'Quick Source' buttons

to other pages

If you configure a default destination in the panel options, all the quick sources could be taken to a (single) default destination with no need for destination selection.

Other more complex forms of "single-destination" mode are conceivable.

Multi-Destination Configuration

Multi-destination (MD) devices are a subset of all destination devices. You can configure a panel to have from 8 to 512 MD destinations in increments of 8 destinations. Not all of those need be used. Those that are not used are considered “undefined.”

- ▲ It is possible to have duplicate entries in the MD destination set. For example, it might be useful to have one or two MD destinations visible at all times.
- ▲ You should make sure your configuration page shows a ‘Page Up’ and a ‘Page Down’ button if the operator will be required to scroll through MD devices.

The limit to the number of MD devices is a panel option. If the limit is 64, for example, the display can scroll through 8 pages of 8 rows, regardless of whether these rows have been assigned a destination. Similarly, the operator could scroll through 4 pages of 16 selection buttons.

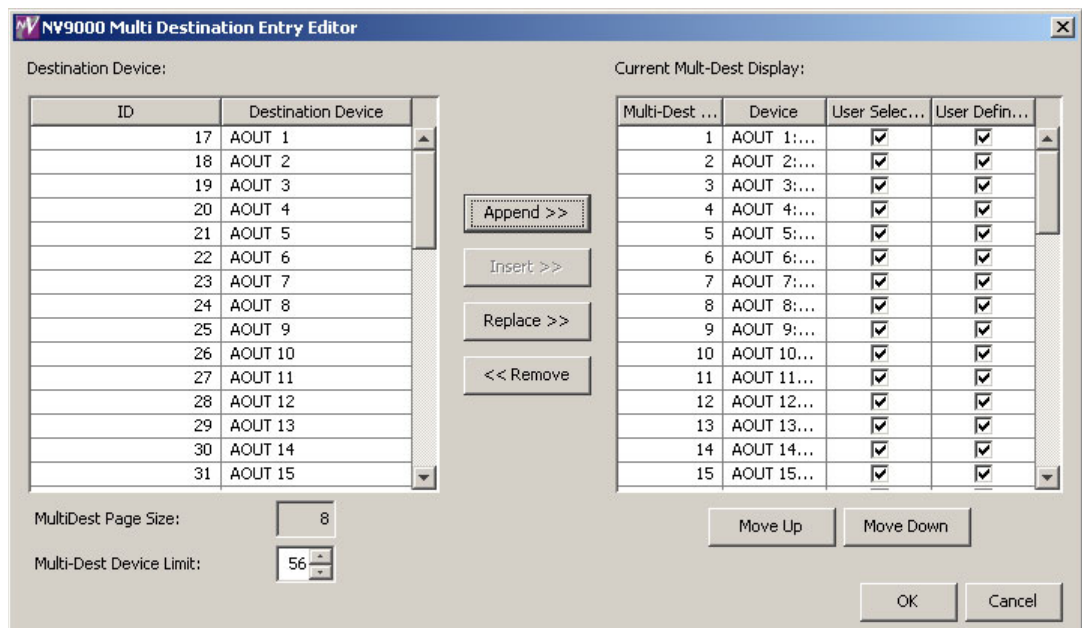
How to Configure MD Devices

Follow these guidelines.

- 1 Go to the NV9654 configuration page of NV9000-SE Utilities.
- 2 Click any button in the panel image. In the button definition section, choose ‘Selection’ from the drop-down list.

A ‘Display Index’ field and an ‘Edit Multi-Dest Devices’ button appear in the button definition section.

- 3 Click ‘Edit Multi-Dest Devices’. The multi-destination entry editor appears:



On the left is a list of *all* destinations defined in the NV9000 system. On the right is a table of the MD destinations you are defining. The number of rows in this table is equal to the maximum number of MD destinations your configuration allows. The MD device list is initially empty.

To define an MD destination, select a destination on the left and copy it, using either the 'Append' button, the 'Insert' button, or the 'Replace' button, to the right.

The 'Append' button *appends* the selected destination(s) to the end of your set of MD destinations.

The 'Insert' button places the selected destination(s) immediately *above* whatever MD destination you have highlighted on the right.

The 'Replace' button *replaces* whatever MD destination(s) you have highlighted on the right with the selected destination from the left.

The 'Remove' button *removes* highlighted MD destinations from the right.

At the bottom left, there is a scroll box in which you can adjust the maximum number of MD destinations. (The page size field is grayed out and irrelevant.)

At the bottom right, are 'Move Up' and 'Move Down' buttons. You can use these to adjust the position in the list of any MD destination.

After you have finished configuring MD destinations, click OK (or cancel, if you want to discard your entries). The MD destinations you have configured will appear on the selection buttons or the display of a running panel having this configuration (when it is operating in MD mode).

You can edit the set of MD devices later, adding or removing entries as you wish. (To edit the MD devices, again choose a selection button in the panel graphic and click the 'Edit Multi-Dest Devices' button.)

MD Destination Options

On the right side of the multi-destination entry editor, each MD destination has two checkboxes. One is in the 'User Definable' column and the other is in the 'User Selectable' column.

User-Definable

When the MD destination is "user definable," the operator may choose a different destination using the panel buttons. "User definable" is the default for all MD destinations. Uncheck the 'User Definable' box if you want to prevent the operator from changing this MD destination.

User-Selectable

When the MD destination is "user selectable," the operator may select it and assign a different source to it using the panel buttons. That is also the default for all MD destinations. Uncheck the 'User Selectable' box if you want to prevent the operator from taking a source to this destination.

Global Navigation

NV9000-SE Utilities supports what are known as "global navigation" pages for NV9654 control panels. Global navigation pages are templates — patterns — that may be used and reused in the creation of NV9654 configurations.

There are two types of global navigation pages: 'Suffix' and 'Navigate'. A 'Navigate' template can define a single button page or an entire subtree of pages. A 'Suffix' template is a single page only. The buttons allowed in a suffix template are a small subset of the buttons supported by

NV9654 configurations. Navigate templates support all functions except 'Global Navigate'. That is because templates cannot be nested (i.e., recursively defined).

Templates themselves are **not** NV9654 configurations.

Follow these steps to create either type:

- 1 Choose 'Control Panels' from the 'Configuration' pane. Then click 'Add Control Panel'.
- 2 In the 'Add Control Panel' page, complete the details as you would for a panel: The panel type is NV9654. Specify a panel ID, a name, and choose 'New' in the options section.
- 3 Rather than click the 'Next' or 'Finish' button, click the 'Suffix' or 'Navigate' button as you require. Doing so creates a global navigation page of the required type.

Using a suffix page is different from using a navigation page.

Names

After adding global navigation templates to your N9000 configuration, you will see them identified as such in the control panel list:

Panel ID	Panel Name	Panel Type	Configuration Name	User	Description
6401	D640	NV9640	\nvision\envy\usersys\live\D640.640	EnvyUser	
6541	D654	NV9654	\nvision\envy\usersys\live\D654.654	EnvyUser	
6542	Sfx1 654	NV9654 Suffix	\nvision\envy\usersys\live\Sfx1 654.654.suffix	EnvyUser	
6543	Nav1 654	NV9654 Navigation	\nvision\envy\usersys\live\Nav1 654.654.navigate	EnvyUser	
6544	X54	NV9654	\nvision\envy\usersys\live\junk54.654	EnvyUser	

The words "Navigate" and "Suffix" appear in the 'Panel Type' and 'Configuration Name' columns.

Referencing a Suffix Template

Suffix pages can be accessed through 'Category' buttons.

When you create a 'Category' button, the button type region displays a checkbox option: 'Use global suffix page to select devices':

Button Definitions

Button Type: Category

Button Caption: CAM

Level Set Filter: None

Src Category: CAM: 34

Dst Category: None

Suffix Page: Sfx1: 16

Button Color: Green

Place this button on all subsequent child pages

Use global suffix page to select devices.

When you check the option, an additional 'Suffix Page' field appears. Choose one of the suffix templates in the drop-down list. The suffix page appears in the panel configuration's button page list:

Page Number	Page Name	Links to Page Num(s)
1	Default	
2	Breakawy	1
10	Sfx:1	1
11	Nav1	1
12	Gnav Sub Page	11

- ▲ The suffix page is a copy of the suffix template. It is not the template or a link to the template. Category buttons in the panel configuration that reference a suffix template do have links to their templates.

- ▲ The suffix page allows operators to enter a **numerical** suffix (that is, an index).

The suffix page typically has a simulated numeric keypad with which operators enter a device suffix in the category-suffix method used under NV9000 systems. The method "builds" device names as a category name concatenated with one or more suffixes. For example, the device name for suffix "114" in category VTR is "VTR114."

- ▲ There are different ways to join the category with the suffix (such as with hyphens). Refer to the *NV9000-SE Utilities User's Guide* if you need information about that.

In addition to its numeric keypad, the suffix page must have a 'Back' button. It could have a 'Take' button and a few other buttons.

The same suffix template can be used for both source and destination categories.

If you do not check the 'Use global suffix page to select devices' box, the category button produces, during operation, a list of all the devices in the category, on one or more button pages. It is not possible to view those (dynamically created) button pages in NV9000-SE Utilities.

Referencing a Navigate Template

Navigate pages can be accessed through 'Global Navigate' buttons.

When you create a 'Global Navigate' button, the button definition has a 'Navigation Btn' field:

Button Definitions

Button Type: Global Navigate

Button Caption: Global
Navigate

Navigation Btn: Nav1: 14

Button Color: Blue

Place this button on all subsequent child pages

Choose a navigate template in that field. The global navigation page and any of its subpages appears in the panel configuration's button page list:

Page Number	Page Name	Links to Page Num(s)
1	Default	
2	Breakaway	1
10	Sfx:1	1
11	Nav1	1
12	Gnav Sub Page	11

Global navigation page(s)

- ▲ The global navigation pages are copies made from the navigate template. They are not the template or a link to the template. The 'Global Navigate' buttons in the panel configuration that reference a navigate template do have links to their templates.

The global navigation template provides all the button types available for panel configurations except additional 'Global Navigate' buttons. Other than that, a global navigation page is functionally identical to any ordinary button page.

A global navigation page should at least have a back button.

Composing Suffix Templates

Suffix templates have only a few button types. Essentially what you can do with a suffix template is create a "keypad." This example includes all button types allowed for suffix pages:

Display	Display	Display	Display	Display	1	2	3	4		Back					
Display	Display	Display	Display	Display	5	6	7	8		Clear Preset	Hold Preset				
Display	Display	Display	Display	Display	VFD/SEL Paging Toggle	9	0	Clear		Take					

The keypad itself consists of 'Category' buttons. In this illustration, these are the yellow buttons numbered 1–9 and 0. The designation "category button" has little relation to "category buttons" in panel configurations. (The operator will have pressed a category button, selecting a category, to get to the suffix page.) Here, the category button simply places a numeral or a suffix on the button page. When the operator presses a numeral or a suffix, the numeral or suffix is appended to the mnemonic of the device being identified. The mnemonic being generated appears in the display area of the panel if the display is enabled and turned on.

- ▲ It is an NV9000-SE Utilities feature that certain numerals become disabled if there is no device index in the category that contains that numeral. It is possible for *all* numerals to be disabled. For example, if there are 23 devices in the category that caused the suffix page to be displayed, then after the operator presses two numerals, all further entry is disabled.
- ▲ It is logical to include a 'Take' button on suffix templates used by source categories. It is not logical to include a 'Take' button on suffix templates used by destination categories. However, if a suffix template can be used for either sources or destinations, then a 'Take' button is at your discretion.
- ▲ It is prudent to place a 'VFD/SEL Toggle' button on the suffix page, in case an operator has turned off the display and wants to get feed back as the digits are pressed.

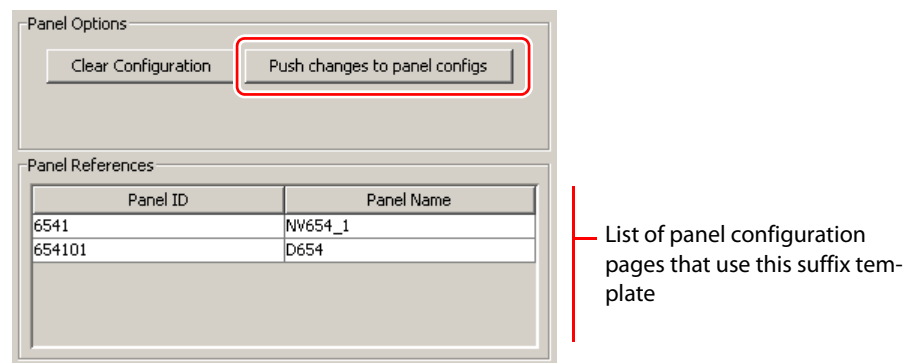
The operator can use a 'Clear Preset' button to cancel a mistaken entry and start over.

Every suffix template must have a 'Back' button, and may have a 'Take' button, a 'Clear Preset' button, or a 'Hold' button. There are no other button types. You can duplicate buttons. The arrangement of the "keypad" is at your discretion.

Template Changes

If you make a change to a suffix template and it is in use (you will see the entries in the list) you probably want to click 'Push changes to panel configs'. When you do, the configuration software adjusts all NV9654 panel configurations to use the modified suffix template. This might override changes you have made to the copy of the suffix page in some other NV9654 configuration.

If you make a change to a suffix template and it is in use by one or more panel configurations, you will want to click 'Push changes to panel configs'. You can see the panel configurations in the list under 'Panel References':



When you click 'Push changes to panel configs', the configuration software adjusts all panel configurations to use the modified suffix template.

If you want to update the suffix page in only some of your panel configurations, create an alternate version of your suffix template and change the panel configurations to use one or the other as desired.

Composing Navigate Templates

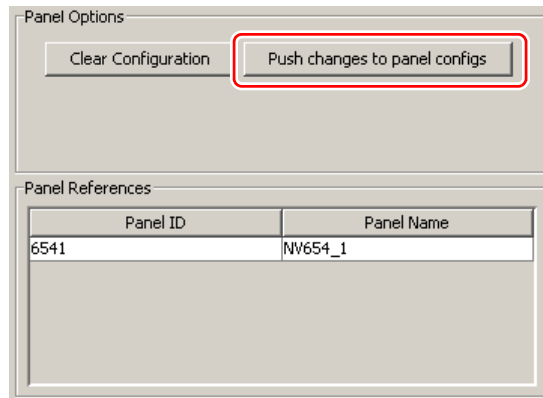
Composing a navigate template is not substantially different from composing panel configurations. The only difference is that navigate templates do not have 'Global Navigation' buttons.

Usage differs, however. Navigate templates can be referenced by panel configurations. And that is the point: you can create multiple panel configurations that, because they reference a navigate template, can all be guaranteed to include the same button pages.

(Navigation templates themselves are not panel configurations.)

Template Changes

If you make a change to a navigate template and it is in use by one or more panel configurations, you will want to click 'Push changes to panel configs'. You can see the panel configurations in the list under 'Panel References':



The screenshot shows a configuration window with two main sections. The top section, titled 'Panel Options', contains two buttons: 'Clear Configuration' and 'Push changes to panel configs'. The 'Push changes to panel configs' button is highlighted with a red rectangular border. The bottom section, titled 'Panel References', contains a table with two columns: 'Panel ID' and 'Panel Name'. The table has one row with the values '6541' and 'NV654_1' respectively.

Panel ID	Panel Name
6541	NV654_1

— List of panel configuration pages that use this navigate template

When you click 'Push changes to panel configs', the configuration software adjusts all panel configurations to use the modified navigate template.

If you want to update the global navigation page in only some of your panels, create an alternate version of your navigate template and change the panel configurations to use one or the other as desired.

5 Operation

Chapter 5 provides operating instructions for the NV9654 control panel.

Topics

Summary	49
Operating Concepts	55
Salvo Mode	74
Menu Mode	74
Setup Mode	76

This chapter is intended specifically for the NV9654 panel **operator**.

Summary

As an NV9654 operator, you will be confronted initially with a relatively small panel—54 buttons of various colors. As a panel option, some of the buttons at the left might be configured to emulate an alphanumeric display. Because the NV9654 is a “hierarchical” control panel, you can view, at any one time, one button “page” of a potentially large number of pages in the hierarchy of a page “tree.” Pressing certain buttons—navigation buttons—causes the panel to display different button “pages.”

The design of the user interface is entirely at the discretion of the configurer. You, the user, depend on the configurer having designed a logical and usable tree structure.

The user interface of an NV9654 in one installation can be radically different from the user interface of an NV9654 in another installation. It is impossible to describe operations in great detail because there is no one interface. What we can do, however, is give you general advice and, of course, specific information on the behavior of the different button types and operational modes.

Because some of the panel’s buttons can have arbitrary legends, a button’s legend might or might not indicate its function. Operators and configurers will have to communicate about the meaning of the buttons in the button tree.

The “alphanumeric display” (9 lines of 40 characters, showing 8 lines of data) shows the status of takes (pending or complete) in X-Y mode or multi-destination mode under normal circumstances. The display presents information or menu items as isolated cases warrant. You can scroll the display when necessary.

Physically, you will find

- Navigation buttons to go up or down in the button tree, or to a specific page in the tree.
- Function buttons (e.g., select a source or lock a destination).
- Lists of sources, destinations, source categories, destination categories, or salvos.
- Virtual level selection buttons (in X-Y mode) or MD device selection buttons (in MD mode).
- Status of preset and current sources and the selected destination(s).

At any particular time, some of the buttons are enabled or disabled. Some are high-tally; some are low-tally; and some might be off entirely (undefined). The buttons have different colors, the choices of which depend on the configurer's intentions.

- ▲ Please refer to the *NV9000-SE Utilities User's Guide* (or the NV9000-SE Utilities help files) if you are unfamiliar with the concepts used in this chapter.

Modes of Operation

The panel operates primarily in either "X-Y mode" or a "multi-destination mode." An XY/MD button can toggle between the modes. (The configurer can specify the default mode.)

The primary modes of operation are:

- X-Y mode— individual control of router *levels*. Choose a destination, optionally choose desired breakaway levels, choosing a source or sources, and press 'Take' to complete a desired route. Sources are taken only on selected levels.
- Multi-destination (MD) mode— lets you view and control multiple destinations. The button tree presents destination devices on selection buttons. You can scroll through the MD device list using 'Page Up' and 'Page Down' buttons. Select one or more MD devices, choose a source, and repeat for all desired routes. Then press 'Take'. Takes are "all level," and break-aways cannot be performed.

MD mode allows you to make multiple routes in a single take.

- Single-destination mode— A single destination is defined during configuration. You have only to choose a (quick) source. The take is automatic when you are using quick source buttons.

Single-destination mode is not a distinct mode and actually need not involve only a single destination. It can be combined with X-Y mode or multi-destination mode.

Secondary modes are:

- Setup mode— where the NV9654 is freshly powered up, but *disconnected from the network*. In this mode, the configurer can preset the NV9654's panel ID and perform a few diagnostic tasks.

Usually, only configurers need be concerned with setup mode.

See [Setup Mode](#) on page 76.

- Salvo mode— pressing a 'Salvo' button and then a 'Take' button executes a salvo. The duration of a salvo is indeterminate.
- Menu mode— pressing a 'Menu' button places the NV9654 in "menu" mode. In menu mode, the oanel's button array becomes a menu button panel that changes as needed during menu operation.

There is nothing in the menu that concerns operators except LCD brightness. An operator may use the menu to set LCD brightness. Administrators and configurers may use the menu to view or change the panel ID, or to determine the software and firmware revisions.

See [Menu Mode](#) on page 74.

Behavioral Models

The panel has two behavioral models: 'All Buttons' mode and 'Display and Buttons' mode.

In 'Panel and Buttons' mode, the panel emulates an "alphanumeric display" using the characters on the left-most 5×3 array of buttons. In this mode, users can turn the display on or off, as needed. When the display is off, the 5×3 button array provides additional button functions.

In 'All Buttons' mode, the panel does not provide an "alphanumeric display."

Button Legends

There are many different button function types (about 35) and the legend that appears on any button varies with the type and depends on the configurer's intentions. Button legends have 3 lines of 8 characters. One or more lines of a button legend can be blank.

Buttons are also color-coded. The colors are specified in the NV9654 configuration. In most cases, buttons that are high-tally (bright) are active or selected. Buttons that are low-tally (muted) are inactive or unselected. Buttons that are dark either have no function or are momentarily disabled. As an example, a 'Take' button is disabled until you have a destination and a source selected. Then, the 'Take' button goes high tally (red, by default).

By default, category buttons show the category mnemonic and source buttons show the source device mnemonic. By default, destination buttons show the destination device mnemonic and salvo buttons show the salvo mnemonic.

Levels on Selection Buttons

In X-Y mode, a set of *selection* buttons presents a set of virtual levels that you can select and deselect for breakaway takes. When a panel is in X-Y mode, we can call them "level" buttons for the sake of simplicity. You can also use the level buttons to perform level-mapping. See the [Level Map](#) function on page 62.

If you have more levels than buttons, you can use 'Page Up' and 'Page Down' buttons to view (scroll through) all the levels. Those buttons are disabled when there is nothing to scroll. There are 3 options for scrolling:

- 1 Scrolling the display only. The items on the selection buttons do not scroll.
- 2 Scrolling the selection buttons only. The items on the display do not scroll.
- 3 Scrolling both the display and the selection buttons at the same time. This behavior can occur only when the panel has *no* 'VFD/SEL Toggle' button.
 - ▲ In this case, the panel should have exactly 8 selection buttons visible. Otherwise the selection buttons will scroll incorrectly.

If the panel has a 'VFD/SEL Toggle' button, you can switch between options 1 and 2. The button will read either "Paging VFD Display" [sic] or "Paging Select Buttons."

When you scroll the selection buttons (only), they scroll modulo the number of buttons. For instance, if there are 9 buttons, they scroll in groups of 9 items.

The display shows up to 8 levels at a time, as determined by the current destination:

Main Men	u	Softw User Panel	are 1 2 3	
		LCD C	ontrol 4	
			Exit 10	*

The display shows the current destination at the left. Here, it is VTR 1. The 3 columns show the preset source(s) and current source(s) for each of the levels (named in the 'LVL/DST' column) of the current destination.

The symbols at the very right of the display—the S-I-L-B columns—present information about the levels displayed. There is an asterisk in the “S” column for any level that is selected. Here, levels HD, AUDIO 3, and TIMECODE are **not** selected. Therefore there is no asterisk for those levels.

The S, I, L, and B columns contain dense information:

- “S” stands for *selected*.
In X-Y mode, an “*” appears to indicate that a *level* is selected and is absent otherwise.
In MD mode, an “*” appears near currently selected destinations. It is absent for unselected MD destinations.
- “I” stands for *information*. An asterisk in the “I” column means that the additional information regarding the associated level or destination is available. Press an ‘Information’ button to view the information.
- “L” stands for *lock/protect*. An “L” in the “L” column means that the associated level (or destination) is locked. A “P” in the “L” column means that the associated level (or destination) is protected. A blank space in the “L” column means that the level (or destination) is neither locked nor protected.
 - ▲ NV9654 operators may lock, protect or release destinations. It is important for operators to know that *other* operators may lock, protect, or release sources and destinations.
 - ▲ When we say a *level* is locked (or protected), we really mean that the currently selected destination is locked on that level.
- “B” stands for *breakaway*.
In X/Y mode, an asterisk in the “B” column means that the associated level is a breakaway level. A blank space in the “B” column means that the level is not a breakaway level.
In MD mode, an asterisk indicates that a breakaway exists on the associated destination.

The display fields can show either names from a name set or system mnemonics for devices depending on (1) the state of the ‘Name Set Toggle’ button (if the panel has one), (2) the default name set (3) the existence of name sets in the NV9000 configuration. (An “alias” is a name defined in a name set.)

Any button page may have one or more selection buttons. The number of buttons on the page is not important unless your panel is configured so that its display and selection buttons scroll together. In that case, the button page should have exactly 8 selection buttons. The arrangement of selection buttons on the button page is entirely up to the configurer.

In X-Y mode, the selection buttons represent levels. Each button displays 3 lines of text:



The *top* line of text identifies the current source and should be identical to the matching entry in the 'Status' column of the display. The *middle* line identifies the preset source and should be identical to the matching entry in the 'Preset' column of the display. If there is no 'Take' pending, the preset fields will be blank, both in the display and on the buttons. The *bottom* row of text shows a level for the current destination and should be identical to the matching entry in the 'Level/Dest' column of the display.

If the current destination had a breakaway, the sources will be different across the levels. If the destination does not include a particular level, that button will be dark, but it will show the level name, as is the case with 'HD', and 'Timecode' here. (Audio 3 is available but not selected and is therefore low-tally.)

Level buttons for which there is no level defined remain blank and dark. Lines in the display for which there is no level defined also remain blank.

Level Mapping

If a level was level-mapped, the display shows an asterisk in the "I" column next to the level name. An operator may press an 'Information' button to get details of the level mapping.

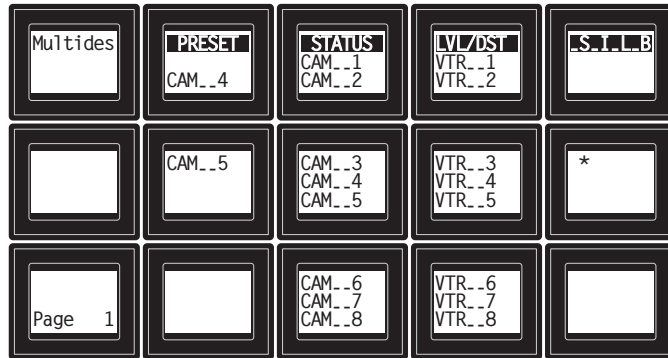
See [Level Map](#) on page 62 for usage information.

MD Devices on Selection Buttons

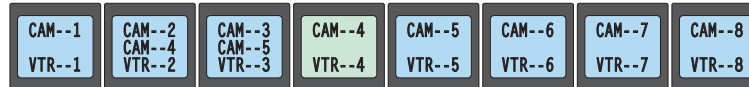
In multi-destination (MD) mode, a set of selection buttons presents a set of MD devices. To perform an MD take, you assign sources to as many MD devices as you like and then press 'Take'. The multiple takes occur simultaneously. In MD mode, we can call these "dest" buttons for the sake of simplicity.

To assign a source to an MD destination, select the destination using a selection button and locate and press a source button. You might have to scroll the display to find the MD destination of interest. (In hold mode, you can assign a source to several MD destinations at once.)

In this example, the displays shows that two sources, CAM--4 and CAM--5, were preset to 2 destinations, VTR--2 and VTR--3, respectively:



Selection buttons also show the preset and current sources and the MD destinations. Each button displays 3 lines of text:



The top line of text shows the current sources. The middle line of text shows the preset sources. The bottom line shows the destinations.

If an MD destination is undefined, it has no name on the display, and the matching button is dark and has no text.

After a take, the preset source becomes the current source. The preset column of the display becomes blank and the middle text rows of the selection buttons become blank.

Lists

The NV9654 can produce lists of devices, categories, and salvos automatically — on the buttons.

Lists of categories and salvos are generated statically — during configuration. Lists of sources and destinations can be generated dynamically — during operation — and might vary from day to day. Long lists (more than the number of buttons available) are characterized by the presence of “Back” and “Forward” buttons in the list. You can move to the next set of entries in the list by pressing the forward button. Press the back button to go to the previous set. A final “back” returns to the page containing the button you pressed to display the list.

Levels or MD devices presented on the display are also considered lists, but these lists are different from, say, salvo lists. To scroll through lists of levels or MD destinations, use the ‘Page Up’ and ‘Page Down’ buttons.

Operating Concepts

Status for most or all operations is presented on the alphanumeric display if it is present and turned on (and occasionally on certain buttons).

Levels

In NV9000-SE Utilities and in the NV9000 router control system, routes occur on *levels*. A level is typically SD, HD, analog video, AES, analog audio, or machine control. Various devices are defined as sending and receiving signals on certain levels. The set of levels handled by a device belong to what is called a *level set*.

A source can be routed to a destination if it has the same set of levels, i.e., it belongs to the same named level set. A source can be routed to a destination in a different level set if the NV9000 configuration has the appropriate level mapping.

The effect of this is that when you, the operator, choose a destination, the NV9000 system recognizes its levels and which source devices are allowed to be routed to the destination and limits your selection to those sources.

Breakaway

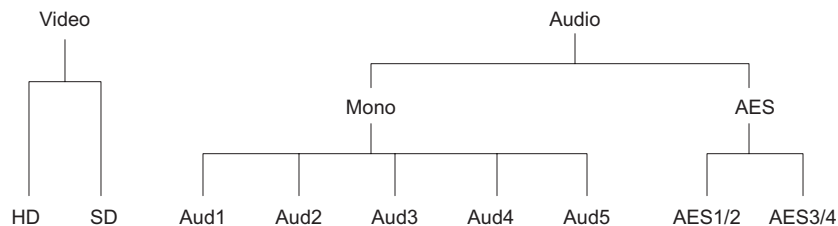
Routes can be all-level in which case they are taken on all levels defined for the destination. The acceptable sources for a route have the same levels as, or some configured mapping to, the levels of the destination.

A breakaway can occur in X-Y mode. A breakaway is where you take different sources to the same destination — on different levels.

It is not possible to take different sources to the destination on the same level. For instance, you cannot take SD from two different sources. The outcome would be noise even if you could do it. (That is because routers are not mixers.)

▲ Level Grouping

Virtual levels can be grouped. This diagram illustrates grouping:



There are two types of virtual levels: basic and abstract. Basic virtual levels are those that correspond to actual physical levels. Abstract virtual levels do not correspond to physical levels. In the illustration, the 5 "Audx" levels are grouped under 'Mono'. The two AES levels are grouped under AES. The two video levels are grouped under 'Video'. The groups 'Mono' and AES are also grouped under 'Audio'.

The levels 'Video', 'Audio', 'Mono', and 'AES' are abstract levels; the other levels (e.g., HD) are basic levels.

If you have chosen a destination whose basic levels are grouped, the panel's display can show either the top abstract levels or it can show the basic (or bottom-most) levels.

A 'Virtual Levels Expand' button, if your panel has one, will cause the display to show the destination's basic levels. (Depending on the level set, those in the example would include one or more of HD, SD, Aud1, Aud2, Aud3, Aud4, Aud5, AES1/2, and AES3/4.) You might have to scroll the display to view them all.

A 'Virtual Levels Contract' button, if your panel has one, will cause the display to show the destination's top-most levels. (In the example, those would be 'Video' and 'Audio'.)

Intermediate levels (such as 'Mono' in the example) do not appear in the display.

- ▲ The NV9654, at present, ignores the concept of level groups, and presents any configured level groups as completely expanded. That is, it displays actual levels and not level groups.

Hold

Hold mode (and hold buttons) apply in both X-Y mode and multi-destination mode.

Breakaway

In X-Y mode, a hold button retains breakaway levels after a take.

Simply press the hold button at any time before the take.

A hold button is a toggle. Press it once to put the panel in hold mode; press it again to remove hold mode.

Multi-Destination Mode

In multi-destination mode, hold mode allows you to select more than one MD destination at a time.

Category Selection

In the NV9000 system, devices are assigned to categories, where the devices within the categories are either numbered or identified by alphanumeric suffixes. For instance, a category representing cameras might be CAM and the cameras in the category might be named CAM1, CAM2, and so on.

NV9654 category buttons can represent either a source category or a destination category (but not both). When you pressing category buttons to begin device selection, one of two things occurs:

- The panel displays a list of all devices in that category. If the list has more entries than will fit on the available buttons, you can scroll through multiple pages of devices using 'Back' and 'Forward' buttons to find the device you want.
- The panel displays a "suffix page" which contains a keypad containing numerals and possibly alphanumeric suffixes, and perhaps some other functions. By pressing keys of the keypad, you can "construct" a device name. Each press of the keypad appends a digit or a suffix to the category name. The device name appears in the alphanumeric display as you construct it.

Suffixes may be numeric or alphanumeric, and up to 4 characters in length. Any device may have up to 8 suffixes. However, device mnemonics are limited to 8 characters. Therefore, the usual — and default — suffixes are just the numerals 0–9.

Example: you want to select the source device CAM_12.

- 1 Press the category button labeled 'CAM'.

The display for this source shows 'CAM'.

- 2 If you see a list of devices, scroll until you find CAM_12 and press that button.

- 3 Or if you see a keypad, press '1' and then press '2'.

At this point, you could press a 'Clear Preset' button — on the suffix page with the keypad — to erase the digits or suffixes you entered. 'Clear Preset' does not return to the previous page but allows you to re-enter digits or suffixes.

- 4 When you have the desired source selected, press a 'Back' button to return to the previous page.

Buttons

The NV9654 has four classes of button functions:

- Dedicated functions, such as 'Default State', 'Chop' or 'Quick Source'.
- Variable functions, such as 'Category', 'Source', or 'Destination'. A category button identifies a specific category. A source button identifies a specific source. A destination button identifies a specific destination. A button page will usually contain more than one category, source, or destination button. Often, category lists, source lists, and destination lists span multiple pages.
- Special functions, such as 'Navigate', 'Global Navigate', 'Back', and 'Forward'. These functions allow the panel operator to move from one button page to another.
- System-generated button functions. When you press a category button, the panel either (1) displays a list of devices belonging to the category or (2) displays a "suffix page." See [Global Navigation](#) on page 43. A device list, if it is long, spans more than one button page.

At present, there are 35 button types, not including "undefined" which is not a real button type:

Back	Hold	Salvo
Broadcast	Information	Save Preset
Category	Level Map	Selection Buttons
Chop	Menu	Source
Clear Preset	Name Set Toggle	Source is Master
Default State	Navigate	Source/Destination
Destination	Page Down	Take
Destination Lock	Page Up	Toggle Display
Destination Protect	Panel Lock	VFD/SEL Toggle
Free Source	Preset Release	X-Y Display
Global Navigate	Previous Source	XY/MD Mode
Forward	Quick Source	

Back

Redisplay the previous button page. (The previous buttons become active.)

A back button may have any legend and be any color, but typically its legend is just "BACK" and typically, its color is blue, as for back buttons generated automatically for lists. A back button is never high-tally.

A back button has no effect on the contents of the alphanumeric display.

See also [Forward](#).

Broadcast

A broadcast button applies to a machine control level only. The button assigns one controlling device (the master) to multiple controlled devices (the slaves). The function is useful in dubbing applications. See [Broadcast Routes](#) on page 71 for more information.

▲ Pressing the 'Broadcast' button turns off the 'Source is Master' button and vice versa.

The default button text is "Broadcast" but a broadcast button can have any legend.

Category

A category button either (1) causes the display of a category's device list or (2) displays a "suffix page." See [Global Navigation](#) on page 43. A category button represents either a source category or destination category.

The button text is normally the category name, but the configurer can give it any text. Category names tend to be short.

It is a common convention that buttons for source categories and devices are green and buttons for destination categories and devices are amber. The NV9654 follows this convention.

Device List

When you press a category button, the NV9654 displays the first of perhaps several pages of device buttons. You can scroll the pages using back and forward buttons. If you press 'Back' while on the first page of the list, the NV9654 returns to the page containing the category button.

Suffix Page

When you press a category button that produces a suffix page, the NV9654 displays the suffix page which will contain buttons forming a numeric keypad, other buttons that represent alphanumeric suffixes and perhaps a few other buttons. Use the keypad to enter an index or suffixes of a device within the category. If you make a mistake, press the 'Clear Preset' button and try again.

When you have finished entered an index or suffixes, press either the back button or the take button if present. The panel will have tracked your entries by concatenating the index or suffixes to the current destination name (for a destination category) or to a preset source name (for a source category).

While you are pressing digits to enter an index, some of the numeric buttons can become disabled. They do so because there are no further categories that can be selected using those buttons. For example, if you have 14 devices in a category, numbered 1–14, after you press the

digit 1, digits 5, 6, 7, 8, and 9 go dark. The digits 0–4 remain because they can be part of a valid index.

The same is true for suffixes: if a suffix cannot be used for a device name, it is disabled.

- ▲ Keep in mind that device names are limited to 8 characters.
- ▲ A keypad normally has 10 buttons, 0–9. However, it is possible for a suffix page to have fewer buttons.

Chop

When a “chop” function is supported by a router, the button is a toggle that enables and disables “chop.” Chop is a rapid switching of the selected destination device between the current source and the preset source.

The chop function is used to test system timing and would **not** be used during normal operation.

The default button text is “Chop” but a chop button can have any legend.

Select a preset source and press ‘Chop’ to start the chop function. Press ‘Chop’ again to stop the chop function.

Clear Preset

The ‘Clear Preset’ button removes all preset entries (while leaving the panel in the same mode).

The clear preset button has the side effect of switching off ‘Save Preset’ mode.

The default button text is “Clear Preset” but the button can have any legend.

Default State

This button returns the NV9654 to its most recent power-up state. You may consider this button an emergency button or a “soft reset” button.

- ▲ This button does **not** affect any previous routes. Only the panel itself is reset.

The default button text is “Default State” but the button can have any legend.

Destination

This button selects a destination.

A destination button can occur on any page, but destination buttons often appear in destination lists. Destination lists can occur either (1) in automatically configured, but static, pages or (2) as a result of pressing a destination category button, in which case, the destinations buttons are generated dynamically. In either case, you navigate through multiple pages by pressing the back and forward buttons.

The button text is normally the destination name, but the configurer can give it any text.

Dynamically generated destination lists, however, use the device names defined in the NV9000 configuration. of

Destination names are often created as a concatenation a category mnemonic with a device index.

- ▲ Note that an MD device button is actually a selection button and is not a destination button.

Destination Lock

This button is a toggle that sets or clears a *lock* on the current destination. The lock can be removed at the panel that originally set the lock, at a panel that has the same user ID, or by a forced release at any panel.

MD Mode

In MD mode, a locked destination has an “L” in the “L” column when it appears in the panel’s display. When you select a locked MD destination with a button, the ‘Destination Lock’ button goes high-tally.

The ‘Destination Lock’ button text is normally “Dest Lock” and when a selected MD device is locked, the button legend becomes “Dest Unlock.”

To lock or unlock MD destinations, select the destinations and press a ‘Destination Lock’ button.

X-Y Mode

In X-Y mode, you may lock or unlock the current destination on any of its levels. Select the level(s) and press the ‘Destination Lock’ button to perform the lock. Select locked levels and press the ‘Destination Lock’ button to unlock them. A locked level has an “L” in the “L” column when it appears in the panel’s display.

In MD mode, a locked destination button appears bright red and its button legend is ‘LOCKED by <user>’ and the ‘X-Y Display’ button turns dark red.

In X-Y mode, the ‘X-Y Display’ button turns dark red for a locked destination.

See [Lock, Protect, and Release](#) on page 70.

Destination Protect

This button is a toggle that sets or clears a *protect* on the current destination device. The protect can be removed at the panel that originally set the protect, at any panel that has the same user ID, or by a forced release at any panel.

- ▲ **Note:** a protect prevents *others* from routing to a destination; a lock prevents *anyone*—even the user who issued the lock—from routing to the destination.
- ▲ You may lock a protected destination, but you cannot change a locked destination to a protected destination directly. You must first unlock it.

The ‘Destination Protect’ button text is normally “Dest Protect” and when a selected MD destination is protected, the button legend becomes “Dest Unprotect.”

MD Mode

In MD mode, a protected destination has a “P” in the “L” column when it appears in the panel’s display. When you select a protected MD destination with a button, the ‘Destination Protect’ button goes high-tally.

To protect or unprotect MD destinations, select the destinations and press a ‘Destination Protect’ button.

X-Y Mode

In X-Y mode, you may protect or unprotect the current destination on any of its levels. Select the level(s) and press the ‘Destination Protect’ button to perform the protect. Select protected

levels and press the 'Destination Protect' button to unprotect them. A protected level has a "P" in the "L" column when it appears in the panel's display.

See [Lock, Protect, and Release](#) on page 70.

Free Source

This button selects a phantom device that can be used to release or "free" devices on the machine control level. A free source can also be used with tielines to free the tieline for others to use.

Use the button as if it were a source.

(The actual free source is configured in the *Level Set Details* page of NV9000-SE Utilities.)

The default button text is "Free Source" but the button can have any legend.

Forward

This button displays and activates the next button page of an automatically generated list.

A forward button is never high-tally. A forward button is generated by the system when a list has more entries than the number of buttons available on the panel. When the list is at its last page, a forward button would do nothing.

See also [Back](#).

Hold

The 'Hold' button is a toggle. Press it once to activate "hold" mode, press it again to deactivate "hold." The button is high-tally when hold mode is active and low-tally when it is not.

You can activate or deactivate hold mode at any time during an MD selection or a breakaway selection in X-Y mode. Your selection remains intact and the panel subsequently operates in hold mode or non-hold mode according to the hold button state.

The default button text is "Hold Preset" but the button can have any legend.

Hold in MD Mode

In MD mode, turning hold mode on allows you to select more than one destination button at a time. When you select a source, the source applies to all selected (high-tally) destinations. If hold is still on when you press 'Take', the selected destinations remain selected and the display reflects the selected destinations. The buttons for the selected destinations remain high-tally.

Without hold enabled, the panel has no destinations selected after an MD take and the buttons for the selected destinations go low-tally.

When hold is active, all selected MD destinations get the source you selected most recently (in case you change your mind and selected another source).

Hold in X-Y Mode

In X-Y mode, the hold button causes breakaway levels to be retained after a take. The levels you selected (and deselected) remain lit (or unlit) as they were before the take.

Information

The 'Information' button presents auxiliary information on the alphanumeric display. Such information might be level-mapped sources.

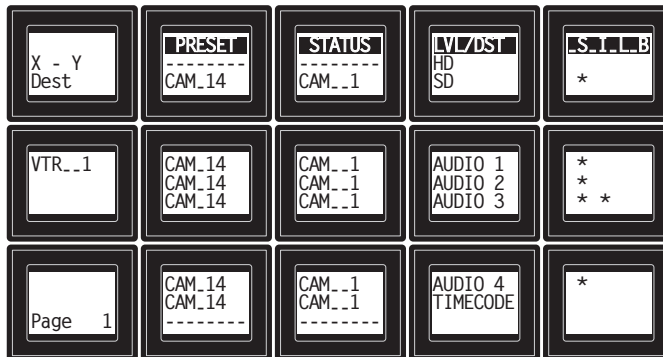
The default button text is "Info" but the button can have any legend.

Level Map

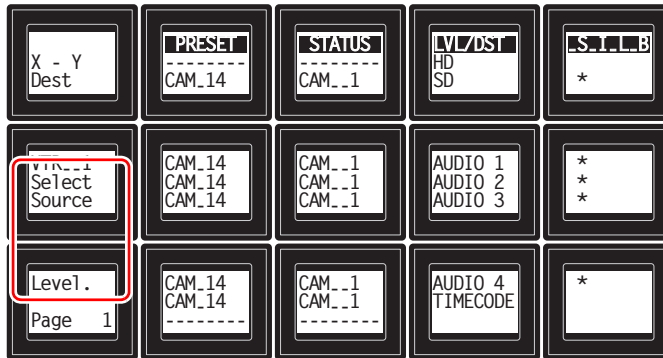
The 'Level Map' button cross-connects levels (typically in the same physical router). The function is typically used to shuffle audio channels, for example, to connect AES1/2 to AES3/4.

Follow these steps to create a level mapping:

- 1 Select a source. Here, the source is CAM-14:

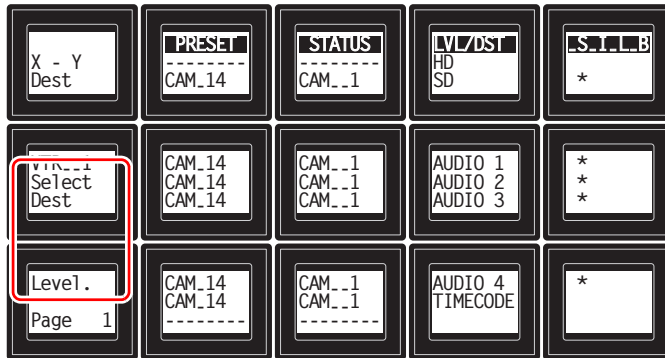


- 2 Press 'Level Map'. The button goes bright and the display tells you to "Select Source Level."



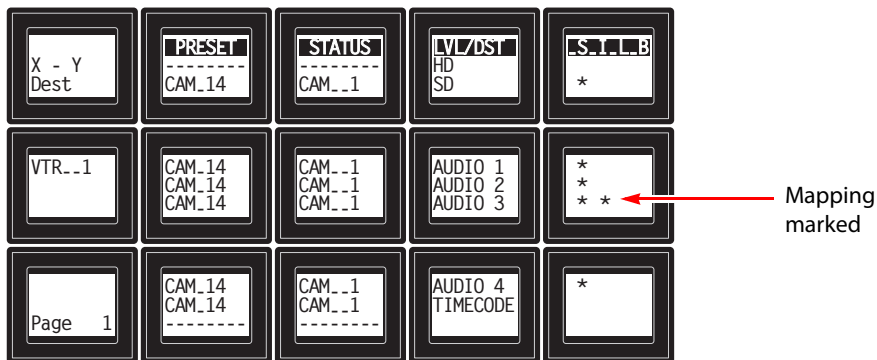
Press a level button.

3 The display now says "Select Dest Level."

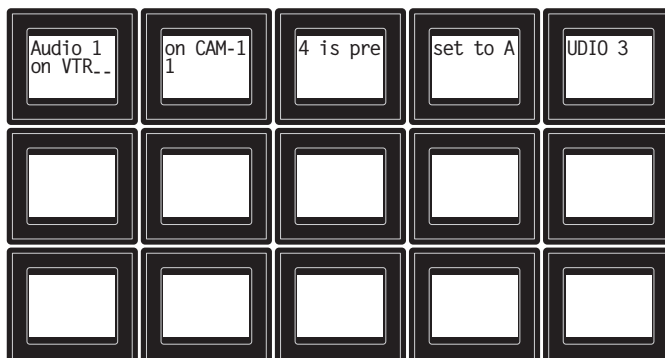


Press another level button.

4 At this point, the level mapping is complete. The display shows an asterisk in the "I" column indicating that you can view details about the level using an 'Information' button:



This is an example of information that shows the result of level mapping:



After you view the information, press the 'Information' button again to return to the X-Y display.

5 Finally, press 'Take'. You can view the level mapping after the take.

You can create multiple level mappings. Level mappings are typically used for AES levels.

The level map mode is cancelled when the next normal take is performed involving the selected devices.

The default button text is "Level Map" but the button can have any legend.

▲ It is possible, but more difficult, to perform level mapping without a display.

Menu

The button puts the NV9654 panel in menu mode and places a small menu on the LCD buttons, that provides access to a variety of panel options.

By pressing any of the menu buttons, you may enter data (such as panel ID) or change LCD brightness values or you can view panel data. The LCD button text varies with context in menu mode.

See [Menu Mode](#) on page 74 for more detail.

Name Set Toggle

An 'Name Set Toggle' button toggles the panel between its default name set and the "system name" set. Whichever name set you select becomes the "active" name set.

- ▲ 'Name Set Toggle' buttons are disabled while a category selection is in progress.
- ▲ The panel requires that category/suffix device selection be performed using the names in the system name set. However, it displays the device you selected using the active name set. We recommend that you switch to the system name set prior to category/suffix device selection and return to your preferred name set afterward.

Navigate

A navigate button displays and activates one of the button pages defined in the panel configuration. We call that the "target" button page.

The target page can be an ordinary button page (defined during configuration) or it can be the first page of a list. Lists are characterized by "back" and "forward" buttons on the panel. Such lists can be categories (source or destination), sources, destinations, or salvos.

Navigate buttons have no specific default text and it is the configurer's job to provide text that is meaningful. The text should help identify the contents of the target page.

Just press the navigate button to access the target page.

Other kinds of buttons can cause the display of a target page. These include 'Global Navigate' buttons and category buttons. In practice, navigate buttons, global navigate buttons, and category buttons are nearly indistinguishable, although the pages they display can be quite different.

See the [Category](#) button type.

Global Navigate

A 'Global Navigate' button functions the same way a navigate button does. Global navigate buttons exist mainly for the convenience of the configurer. Operators should rarely notice any difference between global navigation buttons and other navigation buttons.

Global navigate buttons, however, can access only static button pages. They do not access list pages. That is because configurers have no list options for global navigate buttons.

Page Down

This button scrolls a list of levels in X-Y mode or a list of MD devices in MD mode. There are 3 options for scrolling:

- 1 Scrolling the display only. The items on the selection buttons do not scroll.
- 2 Scrolling the selection buttons only. The items on the display do not scroll.
- 3 Scrolling both the display and the selection buttons at the same time. This behavior can occur only when the panel has no 'VFD/SEL Toggle' button.

If the panel has a 'VFD/SEL Toggle' button, you can switch between options 1 and 2. The button will read either "Paging VFD Display"[sic] or "Paging Select Buttons."

When you scroll the selection buttons, they scroll modulo the number of buttons. For instance, if there are 9 buttons, they scroll in groups of 9 items.

This button scrolls the list *down*. The 'Page Down' button becomes enabled when it is possible to scroll down and is disabled when it is not possible.

The default button text is "Page Down" but the button can have any legend.

Page Up

This button scrolls a list of levels in X-Y mode or a list of MD devices in MD mode. There are 3 options for scrolling:

- 1 Scrolling the display only. The items on the selection buttons do not scroll.
- 2 Scrolling the selection buttons only. The items on the display do not scroll.
- 3 Scrolling both the display and the selection buttons at the same time. This behavior can occur only when the panel has no 'VFD/SEL Toggle' button.

If the panel has a 'VFD/SEL Toggle' button, you can switch between options 1 and 2. The button will read either "Paging VFD Display" [sic] or "Paging Select Buttons."

When you scroll the selection buttons, they scroll modulo the number of buttons. For instance, if there are 9 buttons, they scroll in groups of 9 items.

This button scrolls the list *up*. The 'Page Up' button becomes enabled when it is possible to scroll up and is disabled when it is not possible.

The default button text is "Page Up" but the button can have any legend.

Panel Lock

A panel lock button prevents changes to the panel settings, especially router crosspoints. When the panel is locked, the button array becomes blank except for the 'Panel Lock' button which becomes high-tally red.

The button is a toggle: press the 'Panel Lock' button to lock the panel. Press it again to unlock the panel.

The button text is generated by the NV9000 system and is either "Panel Lock" or "Panel Unlock."

Preset Release

This button removes locks and protects from preset source devices. (If source locks and protects are not used in your system, this button is not needed.)

If you select a source and someone else has locked or protected the source, your panel will illuminate the 'Preset Release' button and tell you who locked or protected the source. You can release it if your panel has "forced release" enabled. (Note that you cannot lock or protect sources with the NV9654.)

Press the 'Preset Release' button to release the source.

The default button text is "Preset Release" but the button can have any legend.

Previous Source

This button presets the previously selected source for the current destination. This function is useful when you make a route in error.

To recover the previous source, press 'Previous Source'. When you do, the 'Take' button goes high-tally. Then press 'Take' to recover the source.

The default button text is "Previous Source" but the button can have any legend.

Quick Source

A quick source button selects a source and performs an immediate take.

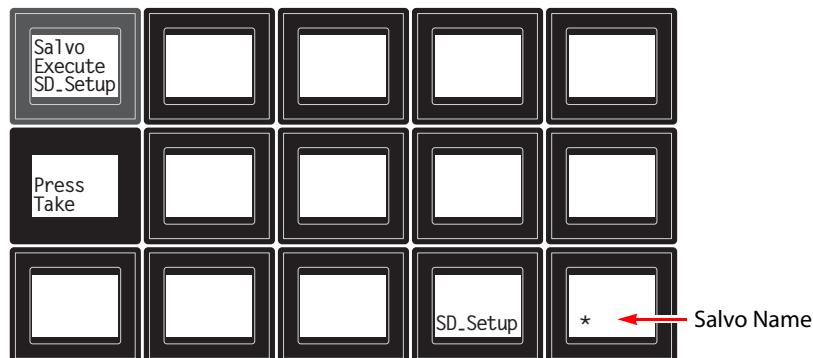
Quick source and source buttons are similar, except that the quick source performs a take. Be aware of which buttons are quick sources so you do not perform an accidental take.

Normally, the button text is the source's mnemonic, but the configurer can assign any text to the button.

Salvo

This button executes a system salvo. A salvo is a pre-defined sequence of NV9000 commands.

The button text is the salvo name. When you press the salvo button, the panel temporarily enters "salvo" mode and presents a message similar to this one on the display:



To confirm that you want to execute the salvo, press a 'Take' button. (You might have to navigate to a 'Take' button.) When you press the take button, the salvo begins executing immediately. Salvos are typically short in duration.

If you want to cancel the salvo before it executes, press the salvo button again.

System salvos are defined in NV9000-SE Utilities. You can review the defined salvos in NV9000-SE Utilities or communicate with the panel's configurer regarding the function of any salvos in your panel configuration.

Save Preset

This button is a toggle: it enables or disables "save preset" mode. When this function is enabled (and the button is high tally), whatever is on preset is retained on preset after a take. When the function is disabled (its button is low tally), whatever is on preset is discarded after a take.

The default button text is "Save Preset" but the button can have any legend.

Selection Buttons

In X-Y mode, the display (if it is present) shows the levels of the current destination. The selection buttons select or deselect levels. The selection buttons themselves show the preset source and current source for each level.

In MD mode, the display (if it is present) shows MD devices and the selection buttons select or deselect MD devices. The selection buttons themselves show the individual MD device names and the current and preset sources for each device. If there is no preset device, the line of text is blank.

A selection button is high-tally when its associated level or MD device is selected and low-tally otherwise.

A button page in your panel might have any number of selection buttons, in any arrangement. Typically, a page provides either a row or matrix of selection buttons.

When you scroll the display using the 'Page Up' or 'Page Down' buttons, the legends on the selection buttons change to match the display.

Selection Buttons in X-Y Mode

When the panel is in X-Y mode, a selection button represents a virtual level. Pressing one or more selection buttons selects (or deselects) the levels associated with the buttons.

- ▲ When *all* levels are selected, pressing a level button turns them all off except the one pressed.

- ▲ If there are more levels than selection buttons, scrolling is enabled.

Deselecting virtual levels in X-Y mode prepares a breakaway take.

Hold mode preserves the level selection after a take. See [Hold](#).

Selection Buttons in MD Mode

When the panel is in MD mode, a selection button represents an MD device. If there are more devices than selection buttons, scrolling is enabled. Pressing a selection button selects the MD device.

- ▲ Certain MD destinations might be unassigned. They appear blank in the display and the corresponding buttons are dark.

When your panel is in hold mode, you can select more than one destination at one time. If your panel is not in hold mode, MD destinations are mutually exclusive: you can select only one at a time.

If you have enabled 'Hold' mode,

- 1 Select one or more MD devices. Scroll the MD devices as needed.
- 2 Select a source.
- 3 Repeat steps 1 and 2 until your presets are complete.
- 4 Press 'Take'. The selected MD devices remain selected.

If you have **not** enabled 'Hold' mode,

- 1 Select an MD device. Scroll the MD device display as needed.
- 2 Select a source.
- 3 Repeat steps 1 and 2 until your presets for the take are complete.
- 4 Press 'Take'. The selected MD devices become unselected.

The configurer might have allowed you to redefine certain MD destinations. To do so is simple: (1) select an MD destination on a selection button, (2) choose a destination that is not on a selection button. You might have to navigate or scroll through a destination list to choose one.

Source

A source button selects a source. (Note that a quick source button selects a source and also performs an immediate take.)

Quick source and source buttons are similar, except that the quick source performs a take. Be aware of which buttons are quick sources so you do not perform an accidental take.

Normally, the button text is the source device's mnemonic, but the configurer can assign any text to the button.

See [Preset Release](#) on page 66 and [Destination](#) on page 59.

Source/Destination

A source/destination button selects both a source and a destination and optionally performs an immediate take. The take is an all-level take.

A configuration option ('Src/Dst Immediate Take') governs source/destination buttons. When the option is enabled, source/destination buttons perform an immediate take, without requiring the operator to press a take button.

When the option is disabled, the button merely selects the source and destination (on all levels). The operator must then press the take button.

By default, the button shows the source name and the destination name, but the configurer may assign other text to the button.

Source is Master

During data level (i.e., machine control) takes, this button makes the source device the master. Otherwise, the destination is the master.

The button is a toggle that reverses the direction of data routing. For example, if the destination is the master and the source is the slave, pressing a 'Source is Master' button reverses their roles. Pressing the button again reverts the roles.

The 'Source is Master' button is used to initiate "broadcast" control routes. See [Broadcast Routes](#) on page 71.

▲ Pressing the 'Source is Master' button turns off the 'Broadcast' button and vice versa. The default button text is "Source Master" but the button can have any legend.

Take

In X-Y mode, a take button routes the preset source device(s) on selected levels to the selected destination device.

In MD mode, a take button switches the preset source device(s) to the selected destination device(s) on all levels.

The default button text is "Take" but the button can have any legend.

Undefined

An undefined button cannot be used and appears dark (unlit) on the panel. The term "undefined button" has meaning primarily to the configurer and not the operator.

Toggle Display

The button is a toggle that turns the panel's display on or off. If the panel was configured in 'All-Buttons' mode — with no display — the button is not available.

VFD/SEL Toggle

The button is toggle. In one state, it reads "Paging VFD Display" [sic] and makes the display (called a VFD for some reason) scroll when the operator presses 'Page Up' or 'Page Down'. In the other state, it reads "Paging Select Buttons" and makes the items on selection buttons scroll.

If your panel does not have a 'VFD/SEL Toggle' button, it will do one of two things:

- Scroll the display only. The selection buttons do not scroll.
- Scroll the selection buttons only. (The panel does not have a display.)
- Scroll both the display and selection buttons at the same time.

This behavior is a configuration option.

If the panel was configured in 'All-Buttons' mode — with no display — the button is not available.

X-Y Display

The 'X-Y Display' button displays status in either X-Y mode or MD mode. It also displays other messages in other circumstances, as required. Pressing this button has no effect.

Prior to a take, the status includes the selected destination and *current* source. After a take, the status includes current source and current destination. The 'X-Y Display' button turns low-tally red if that destination is locked (by anyone) or protected (by another user).

If there is no destination selected, this button says so.

The button appears in whatever color the system assigns it — typically amber or dark red.

▲ Prior to a take, the *preset* source name is displayed on any selection buttons present on the panel. After a take, the selection buttons continue to display the source name, which is now the *current* source name.

In MD mode, the X-Y Display button shows (1) current source, (2) preset source, and (3) destination for one of the selected MD devices — the first one if more than one are selected.

XY/MD Mode

This button switches the panel between X-Y and multi-destination modes.

The button is green for X-Y mode and amber for multi-destination mode.

The button text changes to read "XY-MD In XY Mode" or "XY-MD In MD Mode" according to the mode you have selected. The alphanumeric display also reflects the current mode.

Lock, Protect, and Release

In a multi-user system, routes made by one user can be made safe from being accidentally or maliciously change by another user.

Definitions

Owner	The user ID of a panel where a lock or protect was issued.
Source lock	No one can use the source.
Source protect	No one but the owner can use the source.
Destination lock	No one can route to the destination.
Destination protect	No one but the owner can route to the destination.
Release	To remove a lock or protect.

Some control panels can lock or protect both sources and destinations. However, *The NV9654 provides locks and protects for destinations only.*

A forced release is when the lock or protect is removed by someone other than the owner. A forced release can be performed:

- At any panel configured with release mode set to "forced release".
- At any other panel with "force release" enabled.

The 'Destination Lock' and 'Destination Protect' buttons are toggles. Press the lock (or protect) button to lock (or protect) a destination. Press the button again to release the lock (or protect).

Takes

Following are brief instructions on how to perform a take in 3 scenarios.

XY Mode

- 1 If required, enter X-Y mode. (Use the XY/MD button.)
- 2 If required, select a destination.
- 3 Optionally choose levels.
- 4 Select a source and press 'Take'.
OR
- 5 Select a quick source. The take is automatic.

Single-Destination Panel

(This scenario assumes that a destination was pre-selected during configuration.)

- 1 Select a source and press 'Take'.
OR

- 2 Navigate to a quick source, and select it. The take is automatic.

MD Mode

- 1 If required, enter MD mode. (Use the XY/MD button.)
- 2 Scroll to a destination and select it.
- 3 Select a source.
- 4 Repeat steps 2 and 3 for all destinations you intend to use.
- 5 Press 'Take'.

When 'Hold' is enabled in MD mode, you can select many MD destinations at once. Subsequently selecting a source assigns the source to all selected MD destinations. You can turn 'Hold' on and off as you require during an MD take.

Name Sets

NV9000-SE Utilities allows configurers to define multiple *name sets*. Each name set contains alternate device names for any and all devices in the NV9000 system. The alternate device names can appear in the displays of your panel.

Further, your panel can have a 'Name Set Toggle' buttons that allows you to switch between the "default" name set and the "system name" set. Whichever name set you are currently using is the *active* name set.

There is always a 'System Name' set. That name set includes the device names defined within the NV9000 configuration. Any other name sets are optional.

Device selection using categories and suffixes requires that you enter device names using the *system name set*. However, the display shows the device name as it is represented in the *active name set*.

For example, suppose the system name for a destination is "VTR_42" and its alternate name is "Prod_A." Follow these steps to select the device using category selection:

- 1 Switch to destination mode if necessary.
- 2 Press a VTR category button. (Suffix buttons become enabled.)
- 3 Press 4, then 2. The device is selected, but the name appearing in the destination display is "PROD_A."

In this example, you could press the 'Name Set Toggle' button a number of times to see that PROD_A and VTR_45 are, in fact, the same device.

If you are using aliases, we recommend that you switch to the system name set during device selection and switch back to your preferred name set afterward.

Note that when the panel is displaying aliases, and a device does not have an alias, the panel displays the system name.

Broadcast Routes

It is easy and normal to route a source to multiple destinations for audio and video routers. In contrast, machine control routes are typically point-to-point. Therefore, to control multiple machines requires that you perform a "broadcast" operation using a 'Broadcast' button.

During broadcast, the source device controls one or more destination devices.

Making Broadcast Routes

Follow these steps to broadcast control signals:

- 1 Ensure that the panel is in “source is master” mode. It is either in “source is master” mode by default or you must press a ‘Source is Master’ button to activate the mode. The mode is active when the ‘Source is Master’ button is high-tally.
 - 2 Select a destination and preset a source. Then press ‘Take’.
 - 3 Press the ‘Broadcast’ button.
 - 4 Select a destination and preset a source. Then press ‘Take’.
 - 5 Repeat steps 3 and 4 to add other machines to the set of controlled devices.
- ▲ In MD mode, with hold mode active, you can select multiple broadcast destinations with a single take.

Implicit in the ‘Broadcast’ button is the “source is master” mode. It is not necessary to press ‘Source is Master’ repeatedly. The reason you must press ‘Source is Master’ the first time is that “broadcast mode” is not yet active.

Removing Broadcast Routes

To cancel a route, route the source to another destination normally.

To remove a destination from the set of broadcast destinations, route another source (e.g., the free source) to the destination.

Data Routing

There are 3 data routing options that affect sources and destinations that have a machine control level (i.e., a data level). These options govern what happens when a source or destination device is to be used.

Automatic Data Routing

A take involving a machine control level occurs naturally on all selected levels, including the machine control level, regardless of whether an affected machine control port is in use. The system breaks any existing control connections involved with the source and destination and makes a new control connection for the source and destination.

This data routing option applies in both operating modes.

Manual Data Routing

If a control port for the source or destination is “in use,” a take involving a machine control level occurs on all levels *except* the machine control level. You must break either the source’s control connection, the destination’s control connection, or both of those existing connections before you can take the source to the destination on the machine control level. To break a connection, route a device (as a source) to itself (as a destination) on the machine control level. When the connection is broken, the status column of the display reads “FREE” for the machine control level (in X-Y mode). If your panel is in multi-destination mode, you might switch to X-Y mode momentarily to see this.

When a take involving a machine control level is blocked on the control level, the display displays the message “Control In Use.”

If neither of the control ports for the source or destination are in use, the take occurs naturally without any further action required. Note that the ports will become "in use" after the take you are performing.

This data routing option applies in both operating modes.

Semi-Automatic Data Routing

This data routing option applies only in X-Y mode.

If a control port for the source or destination is "in use," a take involving a machine control level occurs on all levels *except* the machine control level. Nevertheless, you are given the opportunity to complete the take on the machine control level by pressing the 'Take' button a second time.

If neither of the control ports for the source or destination are in use, the take occurs naturally without any further action required. Note that the ports will become "in use" after the take you are performing.

Follow these steps to take the data level as a breakaway:

- 1 Select a destination.
- 2 Select a source.
- 3 Examine the display and the take button.
- 4 If the display shows "Control in Use" and the Take button is still high-tally, press the 'Take' button again to complete the take.

You can cancel the control-level take by pressing a button other than 'Take'.

Chop

The chop function is a diagnostic function for routers that support chop. It allows you to switch rapidly between two sources at a particular destination. The chop interval is defined in the NV9000 configuration. The default chop interval is 6 *fields*.

Follow these steps to use chop:

- 1 Select a destination. The 'Destination' field of the display shows the destination you chose.
- 2 Select a source. This is the first source.
- 3 Press the chop button.
- 4 Select another source. This is the second source. The chop is immediately activated on the routers (of the default destination) that support chop.

To terminate the chop, (1) press the chop button again to turn it off, (2) select the destination you had chosen for the chop, then (3) select any source.

Salvo Mode

The NV9654 enters a minor “salvo mode”¹ when you press a salvo button. Salvo mode is a temporary mode, usually brief, where you are given an opportunity to reconsider the salvo you are about to execute. The NV9654’s display tells you the name of the salvo and instructs you to press the take button to execute the salvo. If you wish to cancel the salvo before it executes, press the salvo button again.

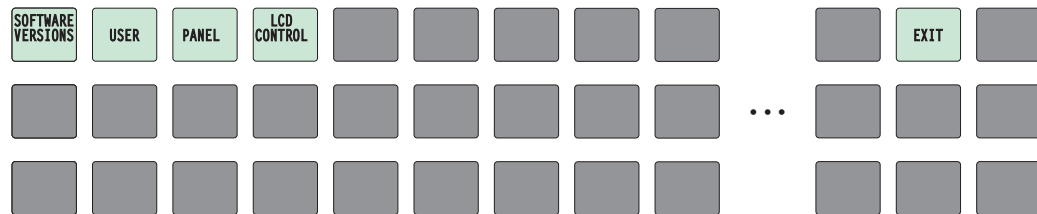
After you press take or cancel the salvo, the panel returns to its previous mode.

See [Salvo](#) on page 66.

Menu Mode

The NV9654 enters menu mode when it has a menu button and you press it.

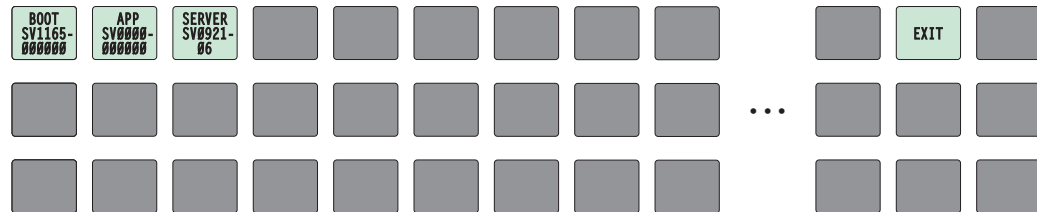
The menu has 4 menu choices and an ‘Exit’ button:



Press ‘Exit’ when you want to leave the menu and return to the previous button page.

Software Versions

Press the ‘Software Versions’ button to view the software and firmware versions:



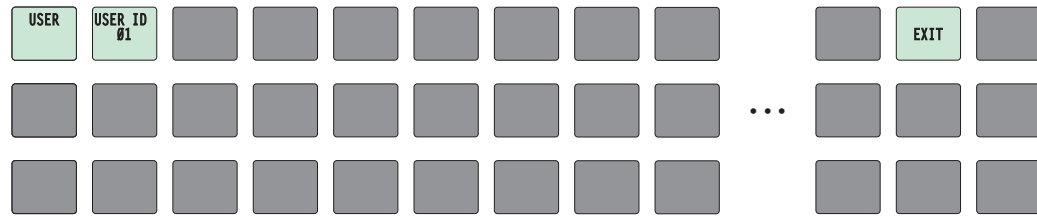
The 3 buttons on the left tell you the current versions of the software in the NV9654. Generally, this is of no relevance unless you are in a diagnostic situation.

Press ‘Exit’ on the right to return to the menu.

1. Other panels, such as the NV9601, have a more extensive “salvo mode.”

User

Press the 'User' button to view user data:



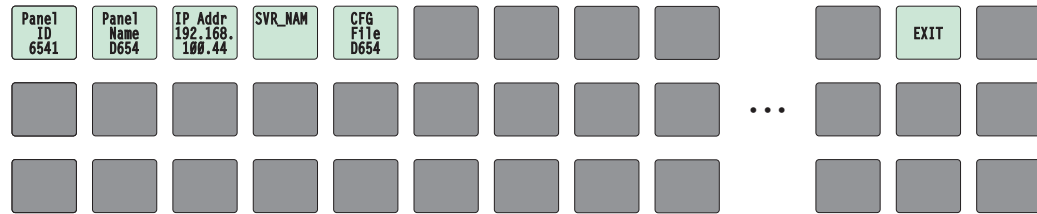
The 2 buttons on the left tell you the user name and user ID as determined by the router control system. These are **not** the Windows user name or the panel ID.

- ▲ User names are important in lock, protect, and release situations. The user who “owns” a lock or protect is identified by a user name.

Press 'Exit' on the right to return to the menu.

Panel

Press the 'Panel' button to view panel data:



The 5 buttons on the left tell you the panel ID, and other useful information about the panel, in particular, the panel's IP address. These are useful in a diagnostic situation. This information helps you ensure that you are sending the correct configuration file to the correct panel.

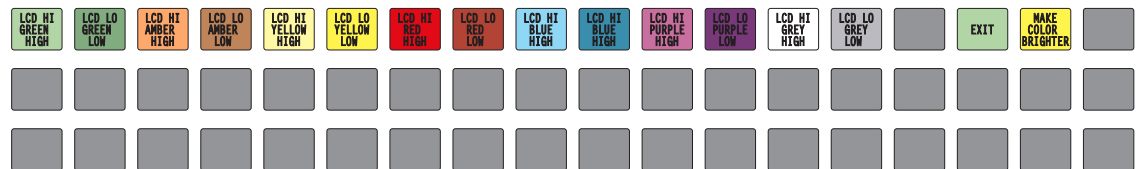
- ▲ The panel acquires its IP address through DHCP on the NV9000's panel/router network.

If the 'Panel ID' button is high-tally, you may change the panel ID. Normally, only your system administrator would do that. See [Initialization](#) on page 13 for instructions.

Press 'Exit' on the right to return to the menu.

LCD Control

Press the 'LCD Control' button to view and change LCD brightness. When you do, the current LCD button state appears on the 14 top left buttons:



The 14 buttons occur in pairs—one pair for each defined color. The pair shows the high tally and low tally values for the particular color.

You can change high-tally from high to medium brightness and change low tally to medium or low brightness, as long as high tally is brighter than low tally. (They cannot both be medium, for instance.)

To change a color's brightness, select the button for the color you want to change. Press either the 'Make Color Lighter' button or the 'Make Color Darker' button, whichever is available.

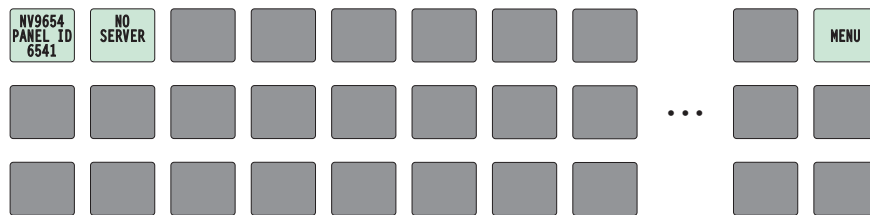
If you make a change, press 'Save' to commit the change or press 'Cancel' to discard the change. If you have made no changes, just press 'Exit' to return to the menu.

The actual colors cannot be represented accurately in print or in a PDF file displayed on your screen. There is a small amount of variation in color from button to button. See [LCD Buttons](#) on page 91 for a color chart.

Setup Mode

Setup mode occurs when the NV9654 is disconnected from its network and is freshly powered up. In setup mode, you can set or change the panel ID, determine software versions, and perform a test of the panel's buttons. It is in setup mode that you must initially set the panel ID.

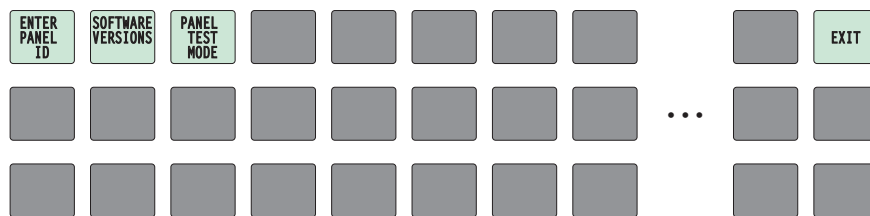
The panel powers up with 3 buttons illuminated in green:



▲ It can take up to 30 seconds for the menu buttons to appear.

In this illustration, the panel ID was already set to 6412. The "Acquire IP Address" is a status message during initialization. Until you connect the panel to its network, the status message will remain the same.

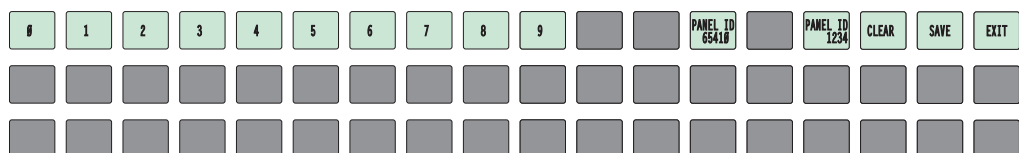
Press the 'Menu' button at the far right to access the setup menu:



There are 3 setup menu choices. The 'Exit' button at the far right allows you to leave the menu.

- Panel ID Entry.

Press the Panel ID Entry button to set the panel ID. A numeric button array appears:

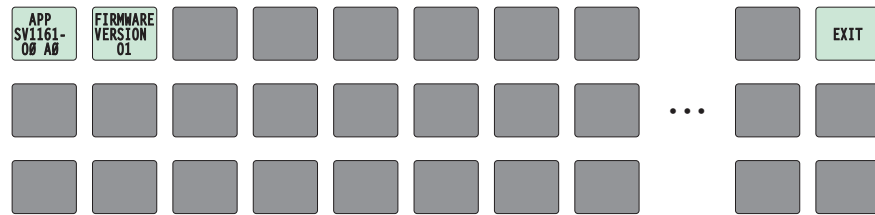


Use the numeric button array as a keypad to enter a panel ID. What you enter appears on the 'Panel ID' button at the top left.

To make the ID permanent, press 'Save'; to cancel your entry, press 'Cancel'. In either case, you will be returned to the setup menu.

- Software Versions.

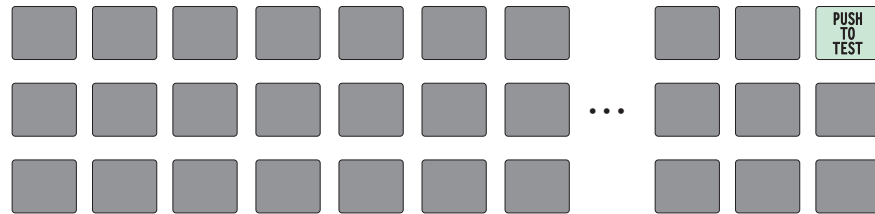
In the setup menu, press the 'Software Versions' button. Three buttons appear:



The 2 buttons at the top left display the software version numbers. Use the 'Exit' button on the right to return to the setup menu.

- Panel Test Mode.

In the setup menu, press the 'Panel Test Mode' button. One button appears:



Press the 'Push to Test' button repeatedly to execute the test.

Each time you press the button, the panel illuminates all its LCD buttons in a single color, changing the color each time you press the button. Keep pressing the button until all 7 colors (high and low tally) have been displayed.

The panel test shows you (1) whether all the buttons are working and how well and (2) whether the software and firmware are working.

When you are finished using the setup menu, press 'Exit' one or more times to return the panel to its normal pre-connected state.

When you connect the panel to its network, the panel leaves its setup state and begins to initialize in its normal operational state. After a short time, the panel will have initialized to its configured state and will display its default button page.

6 GPIO

Chapter 6 provides information about the tally (GPIO) interface.

Topics

<i>The Interface</i>	79
<i>GPIO Configuration Concepts</i>	80
<i>Configuring Outputs</i>	81
<i>Configuring Inputs</i>	83

The Interface

The tally interface includes 8 optically isolated inputs and 4 solid-state relay outputs (also optically isolated). Tally devices you connect to inputs can trigger events—through the NV9654—in the router control system. The router control system can trigger events that—through the relays in the NV9654—switch your tally devices.

The DB25 connector, labeled “GPI Interface” at the rear of the NV9654 presents the tally signals. There are 8 input signals and 4 pairs of output signals.

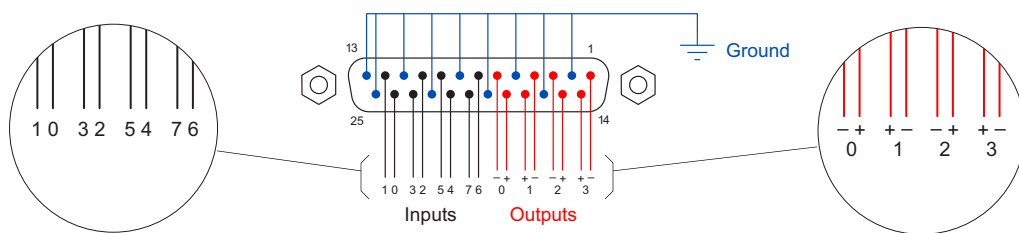


Fig. 6-1: GPI Interface

Input

The tally inputs expect contact closure to ground, through the ground pins on the connector, to trigger a GPI input event.

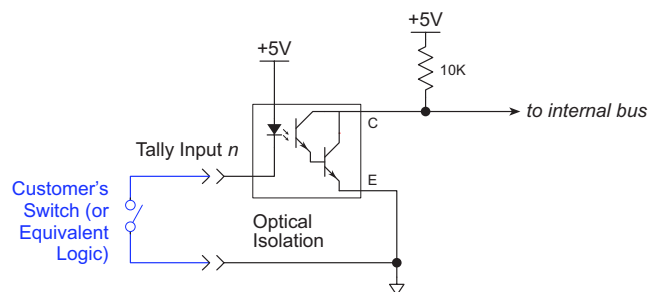


Fig. 6-2: GPI Input

When the input transitions off or transitions on, the NV9654 notifies the router control system, which carries out the task defined for the input (if a task has been configured).

During contact closure, a current of 1.2mA flows. A maximum of 48VDC can be applied to the tally input for less than 5 seconds without failure. No voltage above 5VDC should be continuously applied.

Output

A tally output is a solid state relay (no audible click) with a maximum resistance of 10Ω and current capability of 150mA. It can withstand 200VAC.

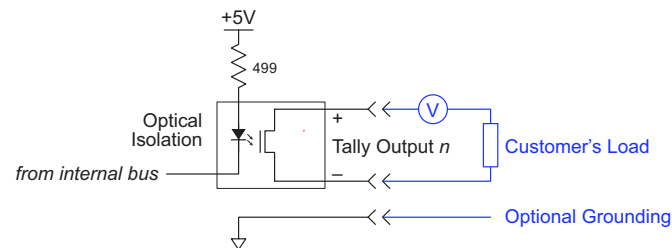


Fig. 6-3: GPI Output

When a condition (defined for the relay) occurs, the router control system notifies the NV9654 which then opens or closes the relay. The relay switches the customer's circuit on or off. (It does not power the circuit. Customers must provide their own power.)

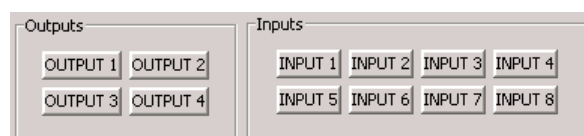
GPIO Configuration Concepts

These are the I/O characteristics of the NV9654's tally interface:

- Eight optically isolated inputs (sometimes called GPIs) that can be configured to trigger an event when the input transitions from off to on and to trigger another event on a transition from on to off. Events include:
 - Execute a salvo.
 - Route the "previous source" switched by *any* panel to a destination.
 - Route the "previous source" switched by *this* panel to a destination.
 - Route a source to a destination.
- Four relays that can be configured to switch on a number of conditions:
 - One or more routes occurring on specific levels.
 - Conditions involving output ports (destination, level).
 - A transition on one or more of the panel's tally inputs.

The GPIO Section of the NV9654 Page

SE's NV9654 configuration page provides a GPIO section, below the tree window:



Click on a button under 'Outputs' to configure one of the 4 tally outputs.
Click on a button under 'Inputs' to configure one of the 8 tally inputs.

▲ There are no actual GPIO *buttons* on the NV9654 control panel.

Configuring Outputs

Clicking an output button (one of 4) displays a "Relay Rule" dialog for the output:

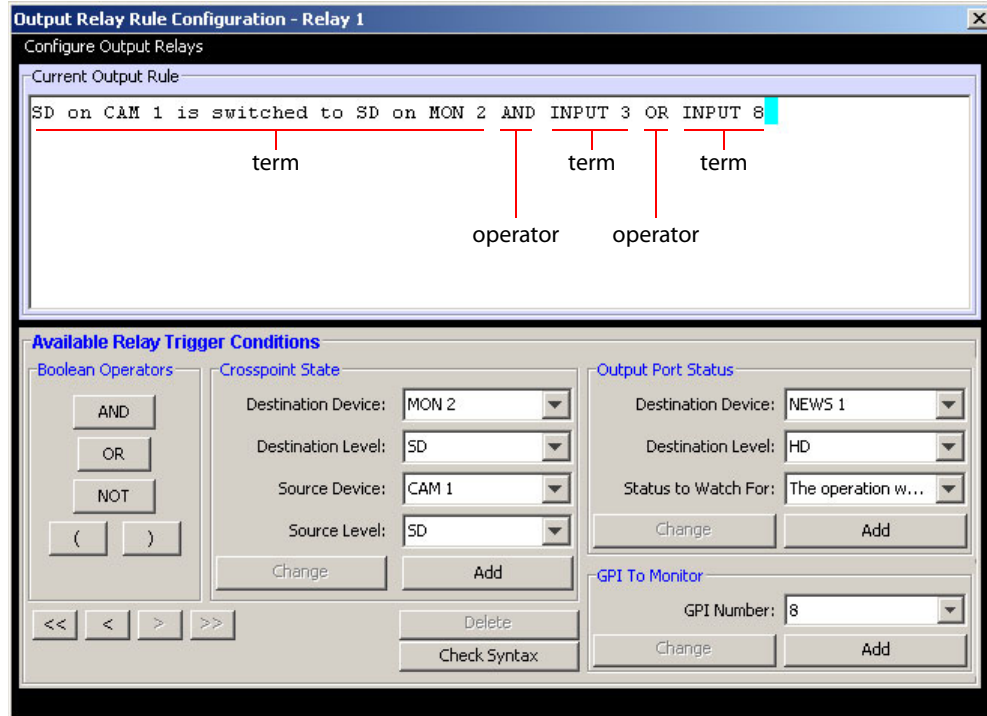


Fig. 6-4: Relay Rule Dialog

In this dialog, you create a Boolean expression involving sources destinations, port status, and GPI (input) status. When the conditions of the Boolean expression are met (i.e., the expression is "true") the relay closes. When the conditions are not met, the relay opens. Figure 6-4 shows one such Boolean expression.

Boolean expressions comprise *terms* and *operators*. The operators include those indicated on the left: AND, OR, and NOT. Expressions can be parenthesized to control the order of evaluation. Operator precedence is normally NOT > AND > OR. All parenthesized expressions are evaluated first; expressions in nested parentheses are evaluated before those in outer parentheses.

Terms (i.e., operands) are generated by choosing entries in the other fields in this dialog and clicking 'ADD'. The example shows the following:

Dest. Device: MON2 Dest. Level: SD
Source Device: CAM1 Source Level: SD

Choosing these items (and clicking ADD) produces the Boolean sub-expression:

SD on CAM1 is switched to SD on MON2

In Figure 6-4, that sub-expression is ANDed with another sub-expression

INPUT 3 OR INPUT 8

The relay will turn on when the *entire* expression is true. That is, when the switch occurs and either of the inputs (3 or 8) transitions from off to on.

(To allow a relay to switch when an input transitions from on to off, precede the input term by "NOT." For example, the expression

```
INPUT 3 OR NOT INPUT 8
```

will evaluate TRUE when either input 3 goes on or input 8 goes off.)

You can also include one or more sub-expressions regarding the state of output ports. You must choose a entry in the drop-down menu. These are the choices:

The operation was successful	Destination port locked
Destination port protected	Router offline / unavailable
No tieline available	Used as master point to point
Used as master without responses	Used as broadcast master
Used as slave point to point	Used as slave without responses
Used as broadcast slave	

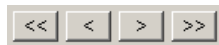
As an example, choosing 'Used as broadcast slave', device VTR3, and level CTRL for output port status produces the sub-expression:

```
CTRL on VTR3 has status of 'Used as broadcast slave.'
```

which you can combine with other sub-expressions as you require.

The actual logic takes place in the router control system, based on the state of the NV9654 inputs and other system-wide events. The router control system sends signals to the NV9654 instructing it to open or close its relays.

Four arrow buttons at the lower left corner of the relay dialog allow you to traverse the expression you are building:



The left double arrows highlights the first term or operator in the expression. The right double arrow positions you at the very end of the expression where you may add more items.

The single arrows select and highlight the previous or next terms, operators, or spaces between terms and operators. If you wish to change a term, you may highlight it, reconstruct the term in the appropriate entry fields, and click the 'Change' button to effect the change.

Using the arrows is the only way to position between two items or at the end of the expression. You can double-click a term or an operator to select it directly.

You can click 'Check Syntax' to evaluate the syntax of your complete expression. Generally, a syntax error will have occurred because you forgot an operator between terms or you have an extra operator at the end. You can click 'Delete' to delete a selected term.

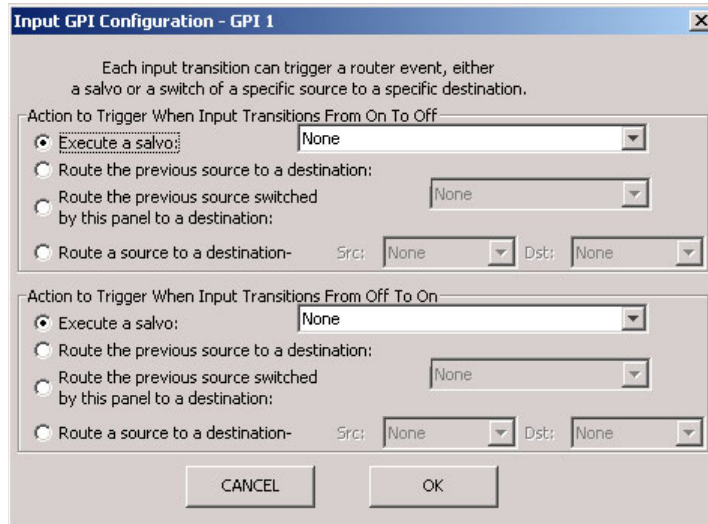
This is a summary of Boolean operations:

- All operands evaluate either TRUE or FALSE.
- AND = true if ALL terms are true; false if ANY term is false.
- OR = false if ALL terms are false; true if ANY term is true.
- NOT = true if term is false; false if term is true (i.e., negation).

▲ Relay output expressions can be as rich (or complex) as you require.

Configuring Inputs

Clicking an input button (one of 8) displays the GPI input dialog:



An event is signalled when a transition occurs on the input from on to off or from off to on. You can configure the NV9654 to recognize either occurrence on any of the 8 inputs, and specify one of 4 behaviors for each event or both:

1 Execute a salvo.

If you choose this behavior, select a salvo ID in the salvo drop-down list.

Note: Although it is not evident in the GPIO input dialog (or anywhere else), a 'Previous Source' command in a salvo chooses the most recent source that is *different* from the current source (for a designated destination).

2 Route the "previous source" (that was switched by **any** control panel) to a destination, even if it is the same as the current source.

If you choose this behavior, select a destination in the destination drop-down list.

3 Route the "previous source" switched by **this** panel to a destination, even if it is the same as the current source.

If you choose this behavior, select a destination in the destination drop-down list.

4 Route a source to a destination.

If you choose this behavior, select a source and a destination in the two drop-down lists.

GPIO Summary

The NV9654 has 4 relays that can switch on or off your external devices, based on (1) NV9654 input transitions and (2) events in the router control system.

Its 8 inputs can be switched on or off by your external devices. When an input transitions on or off, the NV9654 can respond with one of 4 actions, such as executing a salvo. (It is the system that actually executes the salvo.)

7 Technical Details

Chapter 7 provides electrical and mechanical specifications for the NV9654.

Topics

<i>Power Specifications</i>	85
<i>NV9654 Specifications</i>	86
<i>Environmental Specifications</i>	87
<i>Defaults</i>	87
<i>Drawings</i>	88

Power Specifications

Table provides power specifications for the NV9654 control panels.

NV9654 Power Specifications

Specification	Detail
DC power	External power supply: 12VDC \pm 10%, 5 A.
Power consumption	12.72 W
Regulatory	UL listed and CE compliant.

Table provides specifications for the PS0001 power supply.

Power Supply Specifications

Specification	Detail
AC power	90–264 VAC (127–300VDC), 47–447 Hz. Inrush current < 50 A at 230 VAC, cold start, at 25°C, Input current < 2.0 A rms at 115 VAC; < 1.0 sA at 230 VAC.
DC power	\leq 60 W, 12 VDC, 5 A (5.4 A peak), Regulation \pm 2%. Ripple \leq 120 mV.
Efficiency	Efficiency > 80% at full load typical, 115 VAC.
Weight	1.06 lb (0.48 kg).
Regulatory	UL Listed and CE Compliant.

The power supply is an Miranda PS0001-00:

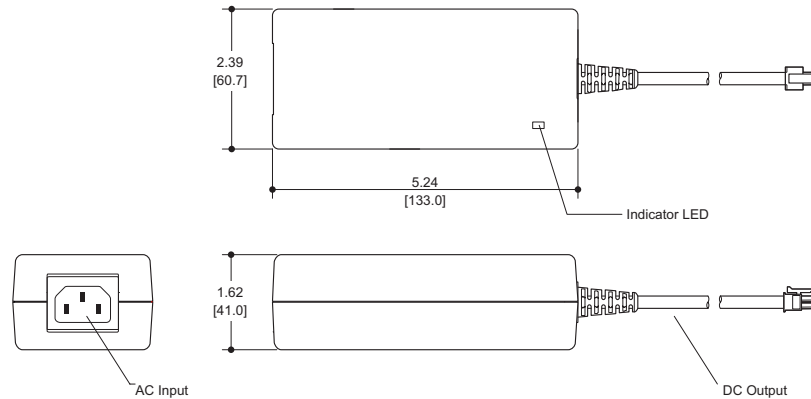


Fig. 7-1: The power output has Molex 4-pin plug. See [Power Cord Retention](#) on page 91.

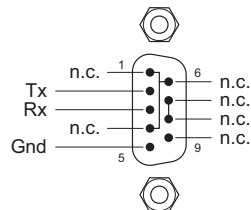
NV9654 Specifications

Table provides specifications for the NV9654.

NV9654 Physical Specifications

Specification	Detail
Dimensions	Height: 3.47" (88.1 mm), fits EIA 2 RU (3.5" or 88.9 mm), Width: 19.0" (482.6 mm).
Depth	3.20 ± 0.01" (81.3 mm), overall.
Power	12.72 W
Weight	1.892 kg (4.17 lb)
Connectors	Power: 2 connectors, Molex 4-pin, keyed. Ethernet: 1 connector, 10/100baseT, RJ-45 jack. RS-232: 1 connector, 9-pin D type, for diagnostics and upgrades. GPIO: DB25.
Tally Interface (GPIO)	Input: ≤ 5 VDC continuous; ≤ 48 VDC for less than 5 seconds; 1.2 mA when on. Output: ≤ 150 mA; ≤ 200 VAC.
Grounding terminal	None.

The RS-232 connector has this pinout:



Pins 1, 4, and 6 are tied together and pins 7 and 8 are tied together. None of those pins are connected to any circuitry.

Environmental Specifications

Table provides environmental specifications for the NV9654.

NV9654 Environmental Specifications

Specification	Detail
Operating temperature	0–40°C, ambient.
Relative humidity	0 to 90%, non-condensing.
Cooling	No fan required.

Defaults

Initial Panel State

Multi-destination mode or X-Y mode, selectable.

Destination: the configured default.

Buttons: high-tally is maximum brightness; low-tally is low brightness.

Configuration Page

The initial button page for a new NV9654 configuration is empty:



No button pages are defined other than the default.

The default panel options are:

Behavioral model: All-Buttons.

Panel mode: Multi-destination.

Release mode: Normal.

Default destination: None.

Preset Monitor: None

Status Monitor: None

XY Data Routing: Automatic.

MD Data Routing: Automatic.

Default name set: System names

Multidest Device Limit:8. (This is the lowest value. The upper limit is 512.)

Src/Dst Immediate TakeEnabled (checkbox checked).

All other options: Disabled (check boxes clear).

The tally inputs and outputs are all initially undefined.

DHCP

The panel is set up to respond to DHCP from the factory. It is possible to assign the panel a fixed IP address using the Panel IP Configuration Utility.

Drawings

The drawings on the following pages identify features and provide overall and critical dimensions.

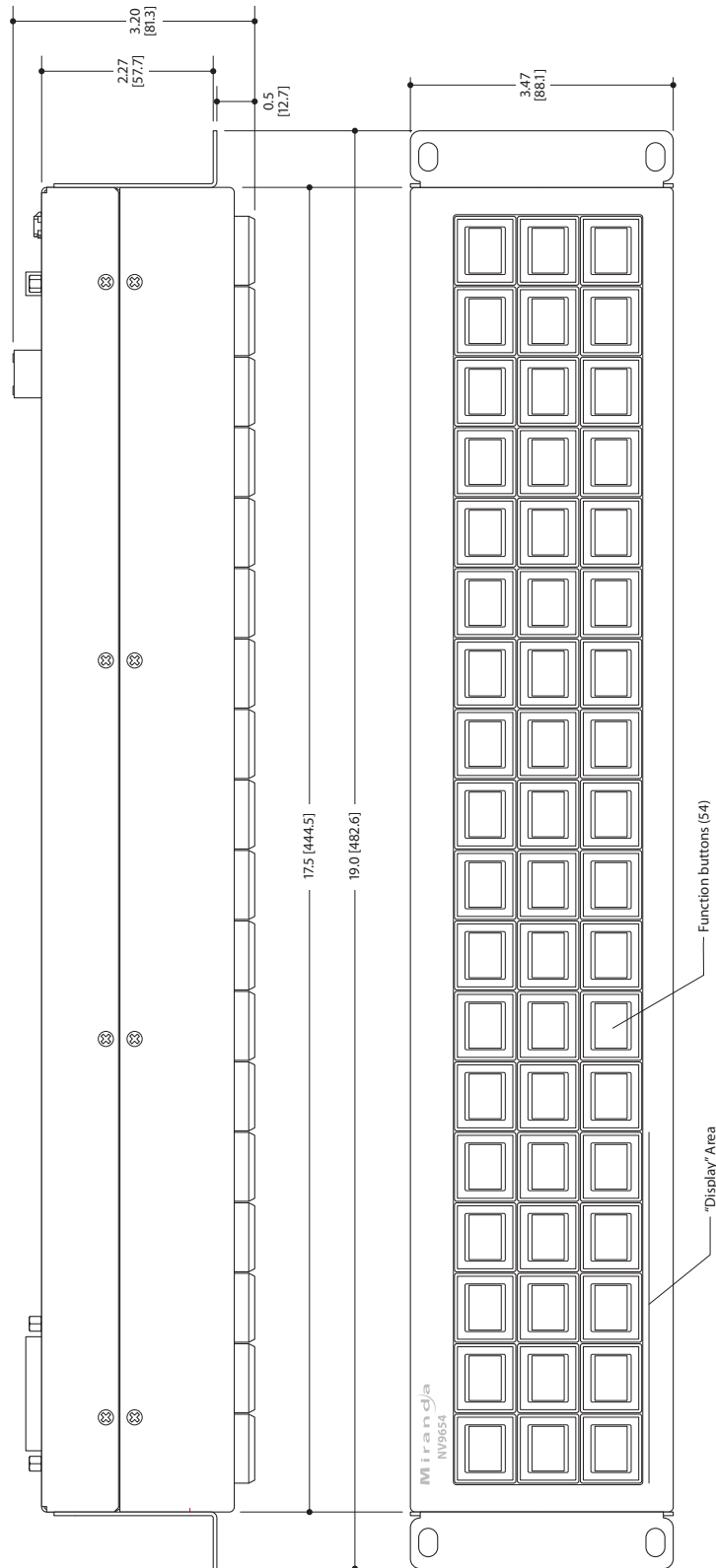


Fig. 7-2: Front and Top Views of the NV9654

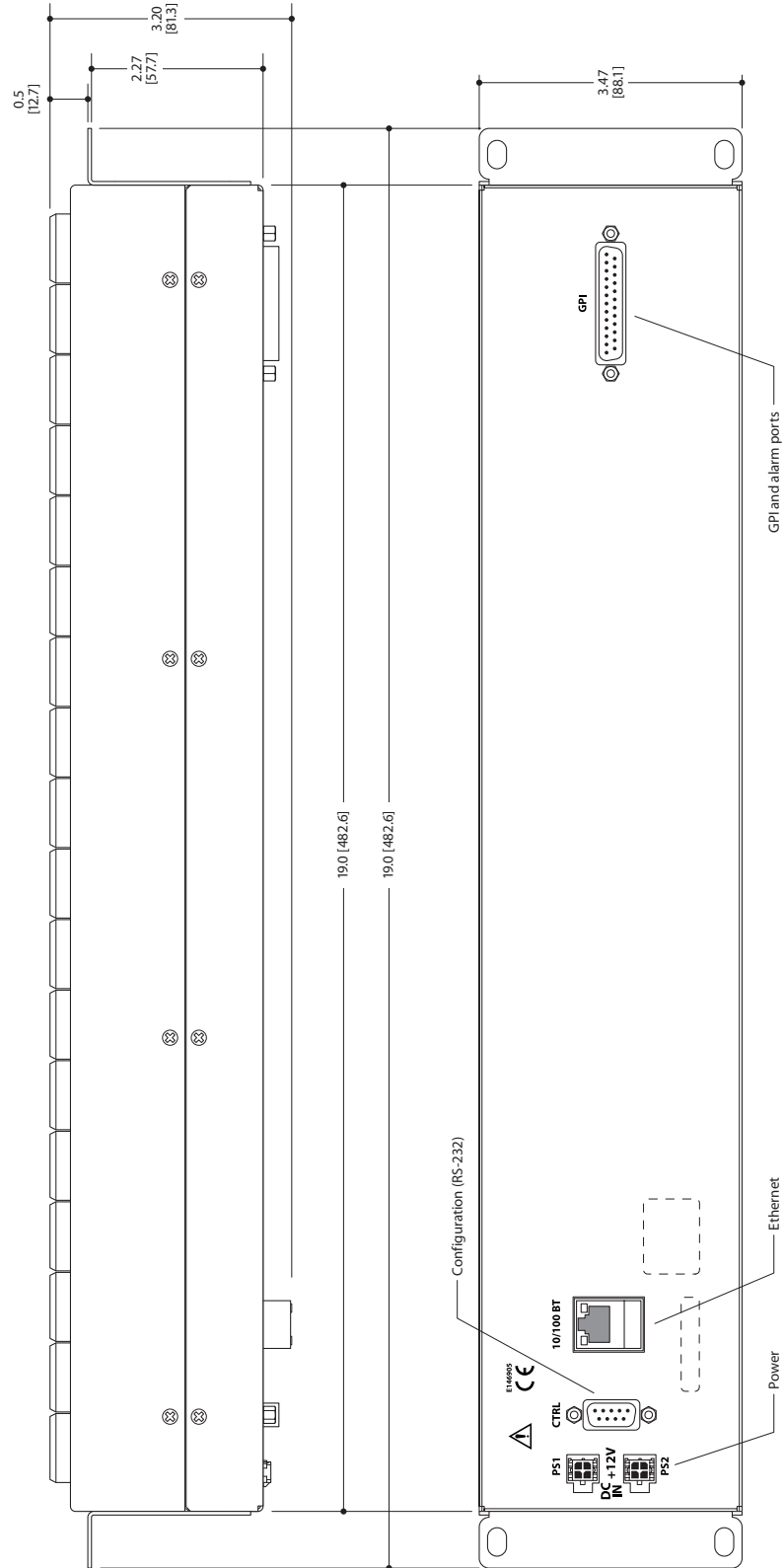


Fig. 7-3: Rear and Top Views of the NV9654

8

Misc. Topics

Chapter 8 provides the following:

Topics

<i>LCD Buttons</i>	91
<i>Power Cord Retention</i>	91
<i>Ordering Information</i>	93

LCD Buttons

The 16 LCD buttons have 3 lines of text, 8 characters each. The text can be blank. The buttons can be of 7 colors in 4 brightness levels: high, medium, low, and off. “Off” is not quite black—you can read black text on the “off” background.

The following is an approximate representation of the 14 button colors:

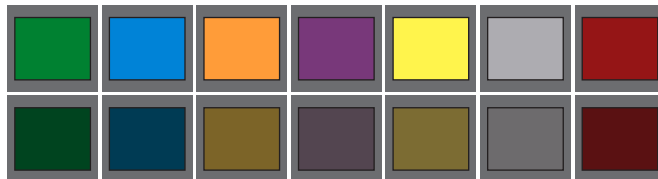


Fig. 8-1: Button Colors

The best way to view this illustration is on a computer monitor. A color printer cannot represent these colors nor can a black and white printer.

Each color is represented in Figure 8-1 as a (high-tally, low-tally) pair.

The colors of the up and down buttons are fixed. When they are off, they are white. When they are on, they are said to be “amber.” This amber is not the same as for the LCD buttons: it is pale and almost yellow.

The buttons are 24.5 mm × 23.5 mm with the LCD portion about 20 mm × 16.5 mm. The button legend appears in a 64×32 pixel matrix.

Power Cord Retention

Use the supplied retention strap to keep the AC power cord firmly connected to the power supply. Follow these steps to use the strap:

- 1 Firmly insert the AC power cord into the power supply. Examine the last figure in this section to see how the strap should be applied.
- 2 Placed the Velcro retention strap, fuzzy side up, on top of the power supply with the buckle loop approximately 1 inch from the AC input side and the remaining strap around the cord end and down:



- 3 Holding the buckle in place, lift the strap up and around the cord end so the strap overlaps itself:



- 4 Holding the buckle loop in place, route the strap around the back of the supply diagonally across so that it sticks out on the left below the output cord:



- 5 Continue the strap around toward the buckle loop and through the loop. Cinch the strap tightly. While keeping tension, place the 2 inch strap end (with Velcro loops) down on the fuzzy part to complete the process:



- 6 Examine the strap though its path around the cord and power supply. Be sure that no slack exists and that it is tight the full length of the strap. If necessary, adjust and cinch it more tightly.

Ordering Information

These are the NV9654 components:

PS0001	12V power supply, 4-pin Molex connector, with cord, and cord retention strap.
NV9654	NV9000 control panel. 54 button, 2RU, XY/MD, hierarchical.
WC0053	Optional breakout cable for the tally interface

G

Glossary

AES/EBU	(Audio Engineering Society/European Broadcasting Union). AES and EBU are standards organizations.
Breakaway	A condition where a destination has multiple sources on different levels.
Category	A category represents a set of devices. (The concept of categories exists to make it easier to select devices at a control panel.) A category can contain sources, destinations, or devices that are both sources and destinations. Each device in the category has a unique selection index within that category. Each category has a mnemonic ID associated with it.
Data Routing	Data routing (a.k.a., machine control routing) is a bidirectional form of routing. Routes are characterized by a controlling device and controlled device(s). The NV5100MC provides certain data routing options including a 'Broadcast' button.
Device	A "device" is a grouping of input and output ports that define a logical entity. (The logical entity often represents a real device, but it does not have to be a real entity.) For example, a system might have 3 levels: video, AES, and time code. A hypothetical device in this system is Camera 1, which consists of video on input port 1 of the video router, AES on input port 5 of the AES router, and time code on input port 8 of the time code router.
GPIO	General Purpose Input and Output. A generic term for the NV5100MC's tally interface. The tally interface is called the "GPI Interface" at the rear of the NV5100MC.
Level set	A level set is a group of virtual levels that are commonly used together when switching devices. A level set also defines the mapping of each virtual level within the level set to a single physical level. All levels in a level set have a unique display index within that level set.
Multi-Destination (Mode)	A mode on an NV9000 control panel that presents many destinations at once, in contrast to X-Y mode. An operator may route sources to multiple destinations in a single take. Multi-destination mode does not permit the selection of breakaway levels.
Operator	The term operator (a.k.a. user) usually refers to users other than the system administrator or configurator. An operator is responsible for making the routes.
Physical Level	Multiple routers provide different "physical levels" on which to switch the signals of devices. Any particular device might send or receive HD, SD, AES, time-code, or machine-code signals.
PIN	The system administrator may create a single "super user" personal identification number (PIN) that functions as a passcode. A PIN is 4–6 digits in length. The PIN allows certain operators to perform functions such as (1) forced release on a control panel that is configured for normal release or (2) changing the ID of a control panel.
Port	A port is the physical connection on a router. A port can only be an input port or an output port.
Salvo	A salvo is a stored group of commands that can be recalled and executed at a NV9000 control panel.
Source/ Destination	The term "source device" is used interchangeably with "source" and the term "destination device" is used interchangeably with "destination." A source is a device that is connected to one or more input ports. A destination is a device that is connected to one or more output ports. An example of such a device would be a monitor.

Glossary

	A device can be both a source and destination. An example of such a device is a VTR.
System administrator	The system administrator is the person responsible for installing, configuring, and maintaining a router control system.
Tally	(1) High or low button illumination. (2) Tally interface <i>to be defined</i> .
Virtual level	Virtual levels allow the system administrator to define a single physical router level as multiple levels. Within a physical level, any port can be mapped to any virtual level. For example, an AES matrix could be divided into AES 1/2 and AES 3/4 <i>virtual</i> levels.
X-Y (mode)	A mode on a control NV9000 control panel that switches one destination at a time, in contrast to multi-destination mode. In X-Y mode, some panels can display the virtual levels for the selected destination. Operators using those panels can perform breakaway level selection and level mapping.

Index

A

Acquiring IP address (message)	14, 76
Acrobat usage	
bookmarks	1
hyperlinks	1
navigating and searching	1
Add control panel (button)	16
Add HW panel (page)	16
AES (Audio Engineering Society)	95
AES/EBU	95
Africa, contact	105
Agreement, license	iii
All buttons (mode)	21
Alphanumeric display	5, 15, 49, 63
Americas, contact	105
Asia, contact	105
Auto-fill options	
destination categories	36
destination devices	36
from category	35
manually fill devices	35
manually ordered buttons	36
salvos	36
source categories	36
source devices	35
starting with	35
Automatic data routing	72
Automatically generated lists	59, 61

B

Back (button)	5, 20, 27, 35–36, 54, 57–59, 64
Behavioral model	21
Behavioral models	51
Bookmarks, Acrobat	1
Boolean	
expressions	81
operators	81
terms	81
Breakaway	9, 29, 55–56, 67, 70, 95
Breakout cable (WC0053)	8, 12, 93
Brightness, LCD	4–5, 64, 87
Broadcast (button)	27, 58, 69, 71–72
Broadcast data routing	9
Broadcast mode	72
Broadcast routes	71

Button

add control panel	16
back	5, 20, 27, 35–36, 54, 57–59, 64
broadcast	27, 58, 69, 71–72
cancel	76–77
category	28, 51, 57–58
chop	28, 59, 73
clear preset	21, 28, 46, 59
default state	28, 59
destination	28, 51, 57, 59
destination lock	24, 28, 60, 70
destination protect	24, 29, 60, 70
edit panel configuration	17
exit	74
finish	17
forward	5, 29, 35–36, 54, 57, 59, 61, 64
free source	9, 29, 61
global navigate	29, 57, 64
hold	9, 24, 29, 61–62
information	29, 63
LCD control	75
level map	29, 51, 62
menu	4, 8, 13, 30, 64, 74
name set toggle	7, 30, 52, 64, 71
navigate	4, 19–20, 27, 30, 35, 37, 49, 57, 64
next	17
page down	5, 15, 30, 50, 65
page up	5, 15, 30, 50, 65
panel	75
panel lock	30, 65
preset release	31, 66
previous source	9, 31, 66
quick source	9, 31, 41, 66, 70
revert to saved	18, 21
salvo	31, 51, 66
save	18, 21, 76–77
save preset	9, 24, 31, 67
source	32, 51, 57, 68, 70
source is master	24, 32, 68, 72
source/destination	9, 32, 68
take	21, 33, 51, 66, 69
toggle display	69
undefined	19, 33, 69
user	75
VFD/SEL toggle	33, 38, 51, 65, 69
virtual levels contract	56
virtual levels expand	56
X-Y display	60, 69
XY/MD mode	5, 33, 50, 70

-
- Button captions 26, 34, 51, 53, 58–59, 68
 - Button classes 25, 57
 - Button color 4–5, 20, 26, 50–51, 58, 69, 91
 - Button definitions 19, 25
 - Button functions 57
 - Button layout
 - hierarchical or tree-structured 4, 20, 49
 - Button legends 51, 53, 58–59, 68
 - Button page 4
 - Button page list 20, 34–35
 - Button pages 4, 34, 49, 57, 61, 64
 - deletion 37
 - renaming 37
 - Button text 20
 - Button tree 4
 - Button types 26
 - during configuration 27
 - Buttons
 - commitment 21
 - control panel 2
 - function 4
 - LCD 4
 - menu 5
 - selection 5, 32, 38, 53, 59, 67
 - system-generated 25, 57
 - Buttons, function 3
- C**
- Cable, breakout (WC0053) 8, 12, 93
 - Cable, Ethernet 12–13
 - Cancel (button) 76–77
 - Captions, button 26, 34, 51, 53, 58–59, 68
 - Categories 5
 - Category
 - destination 36, 58–59
 - lists 49
 - source 36, 58
 - Category (button) 28, 51, 57–58
 - Category (defined) 95
 - Category lists 26, 30, 57, 64
 - cautions v
 - CE iii
 - change history ii
 - Chapter structure 1
 - Chapters
 - 1, Preface 1
 - 2, Introduction 3
 - 3, Installation 11
 - 4, Configuration 15
 - 5, Operation 49
 - 6, GPIO 79
 - 7, Technical Details 85
 - 8, Misc. Topics 91
 - Checkbox 23, 27
 - options 23
 - China, contact 105
 - Choices
 - navigation button 34
 - Chop 73
 - Chop (button) 28, 59, 73
 - Clear preset (button) 21, 28, 46, 59
 - Color, button 4–5, 20, 26, 50–51, 58, 69, 91
 - Commitment buttons 21
 - Configuration 2
 - button types for 27
 - NV9654 15
 - options 16
 - page 18–19
 - page, default 18–19, 87
 - pane 16
 - tasks 20
 - Connectors
 - DB25 4, 8, 38, 79
 - Ethernet 12
 - GPIO 4, 8, 38, 79
 - power 12
 - RJ-45 12
 - RS-232 86
 - tally 4, 8, 38, 79
 - contact Miranda 105
 - Control panel 2, 11–12, 95
 - buttons 2
 - installation 12
 - NV96xx 11, 95
 - Control panels (page) 16–17
 - Control system, NV9000 96
 - Controlled device 58
 - Controlling device 58
 - corporate office, contact 105
 - customer support 105
- D**
- Data routing 9
 - Data routing (defined) 95
 - Data routing (options) 72–73
 - Data routing mode
 - MD 23, 87
 - XY 22, 87
 - DB25 connector 4, 8, 15, 38, 79
 - Declaration of Conformance iii
 - Default
 - destination 22, 87
 - hold preset 24
 - NV9654 configuration page 18–19, 87
 - page 36
 - save preset 24
 - source is master 24

Default name set (option)	23, 87
Default state (button)	28, 59
Defaults	87
Deselect all destinations and turn off hold after take (option)	24
Destination	24–25
categories	36, 58–59
default	22, 87
devices	36
lists	49, 57, 59, 64
lock, enabled	24
locks	70
protect, enabled	24
protects	70
Destination (button)	28, 51, 57, 59
Destination (defined)	95
Destination lock (button)	24, 28, 60, 70
Destination protect (button)	24, 29, 60, 70
Device (defined)	95
Device limit, MD mode	23, 87
Device lists	25, 30, 57–58
Devices	
destination	36
source	24, 35
switching	95
DHCP	11–12, 14, 75, 88
Dialog, edit navigation button	31, 34
Dimensions	88
Display	5, 15, 49, 63
Display and buttons (mode)	21
Display index	32
Display indexes	41
document	
notice of use	ii
part number	ii
revision	ii
Documentation	12
other	2
Drawings	88
NV9654, front view	89
NV9654, rear view	90
NV9654, top view	89–90
Dubbing applications	58

E

EBU	95
EC9700 (GUI)	11
EC9710 (GUI)	11
Edit navigation button, dialog	31, 34
Edit panel configuration (button)	17
Electrical specifications	
NV9654	85–86
power supply	85
Electrostatic discharge	11

E-mail address	105
Enable	
destination lock	24
destination protect	24
force release	25
Environmental specifications, NV9654	87
ESD	11
Ethernet cable	12–13
Ethernet connector	12
Europe, contact	105
European broadcasting union (EBU)	95
Examples, symbol for	2
Exit (button)	74
Expressions, Boolean	81

F

Fax number	105
FCC statement	ii
Figures	
NV9654, front view	89
NV9654, front, photo	3
NV9654, rear view	90
NV9654, rear, photo	4
NV9654, top view	89–90
Find, Acrobat	2
Finish (button)	17
First page, Acrobat	2
Flip-flop source to preset after take	25
Forced release	9, 21, 25, 60, 66, 70, 95
Forward (button)	5, 29, 35–36, 54, 57, 59, 61, 64
France, contact	105
Free source (button)	9, 29, 61
From category (option)	35
Function buttons	3–4

G

Global navigate (button)	29, 57, 64
Global navigation	43
Global navigation templates	9, 17, 43, 45, 47
Go to first page, Acrobat	2
Go to last page, Acrobat	2
Go to next page, Acrobat	2
Go to next view, Acrobat	1
Go to previous page, Acrobat	2
Go to previous view, Acrobat	1
GPI interface	8, 79
GPIO	12, 15, 20, 87
connector	4, 8, 38, 79
inputs	4, 8, 12, 15, 79, 83, 87
interface	8
options	80
outputs	4, 8, 79–80, 87

H

Hardware symbols	iv
Hazardous substance	iii
Hide sources not configured on this panel	24
Hierarchical button layout	4, 20, 49
High tally	2
Hold (button)	9, 24, 29, 61–62
Hold (mode)	56
Hold mode	24, 29, 40–41, 56, 61, 67–68, 71
Hold preset as default	24
hours of operation	105
How to	
create a level mapping	62
initialize the NV9654	13
install the NV9654	12
make a broadcast route	72
use selection buttons	38
use semi-automatic data routing mode	73
Hyperlinks, Acrobat	1

I

ID, panel	5, 13–14, 24, 30, 64, 75–76
Information (button)	29, 63
Information (column)	6
Initial panel state	87
Initialization	13
Initializing the NV9654	13
Inputs	
GPIO	4, 8, 12, 15, 79, 83, 87
tally	8, 12, 15, 79, 87
Installation	
NV9654 control panel	12
package contents	11
receiving and unpacking	11
Installation, NV9654	11
IP address	11–12, 88
IP addresses	13–14, 75
IP configuration	11–12, 88

J

Jump back after destination selection (option)	25
Jump back after source selection (option)	25
Jump back after take (option)	25
Jump to an empty new page (option)	34
Jump to an existing page (option)	34
Jump to multi-dest selection when switching to XY (option)	25

L

Last page, Acrobat	2
LCD brightness	4–5, 30, 64, 87
LCD buttons	4, 14, 20, 30
LCD control (button)	75
Legends, button	51, 53, 58–59, 68
Level	29
breakaway	29, 56
mapping	51, 53, 63
physical	95–96
sets	95
virtual	49, 51, 54, 62, 70, 95–96
Level map (button)	29, 51, 62
Level mapping	9
Level set	55
Level/Dest (column)	7
Levels	55–56
license	iii
Limited X-Y (mode)	73
Links to page numbers, in button page list	37
Lists	20, 30, 54
automatically generated	59, 61
category	26, 30, 49, 57, 64
destination	49, 57, 59, 64
device	25, 30, 57–58
salvo	49, 64
source	49, 57, 64
Locating network (message)	14
Lock	9
Locked devices	9
Locks	24, 28, 49, 60, 66, 70
destination	70
source	70
Low tally	2

M

Manual data routing	72
Manually fill devices (option)	35
Mapping levels	9, 51, 53, 63
Mapping, virtual to physical level	95
MD	
device limit	23, 87
devices	54
MD (abbreviation for multi-destination)	
MD destination	43
Menu (button)	4, 8, 13, 30, 64, 74
Menu buttons	5
Menu mode	8, 30, 50, 64, 74
Messages	69
acquiring IP address	14, 76
locating network	14
no server	13–14

select dest level	63
select src level	62
Middle East, contact	105
Miranda, contact	105
Mode	
all buttons	21
broadcast	72
data routing	22–23, 87
display and buttons	21
hold	24, 29, 40–41, 56, 61, 67–68, 71
limited X-Y	73
menu	8, 30, 50, 64, 74
multidest	6
multi-destination	5, 8–9, 21, 23, 25, 28–29, 33, 38, 40–41, 49–50, 53, 56, 60–61, 67, 69–71, 87, 95–96
panel	21
panel test	77
release	21, 87
salvo	8–9, 50, 74
save preset	67
setup	8–9, 50, 76
single-destination	8, 41–42, 50, 70
source is master	72
X-Y	3, 5–6, 8–9, 21, 25, 28–29, 33, 38–40, 49–51, 56, 60–61, 67, 69–70, 87, 95–96
Monitor, preset	22
Monitor, status	22
MRC	11
Multidest mode	6
Multi-destination mode	5, 8–9, 21, 25, 28–29, 33, 38, 40–41, 49–50, 53, 56, 60–61, 67, 69–71, 87, 95–96

N

Name set toggle (button)	7, 30, 52, 64, 71
Name sets	7, 23, 30, 52, 71, 87
Navigate (button)	4, 19–20, 27, 30, 35, 37, 49, 57, 64
Navigation choices	34
Navigation options	34–35
Navigation, global	43
Next (button)	17
Next page, Acrobat	2
Next view, Acrobat	1
No server (message)	13–14
Normal release	21
notice, use	ii
NV9000	11
router control system	2
system controller	11, 13
user's guide	2
NV9000 configuration	15
NV9000-SE Utilities	2, 8, 11–15, 18, 20, 34
user's guide	2
NV915	11

NV915, system controller	11
NV920	11
NV920, system controller	11
NV9654	2–3, 11–12, 15, 93
configuration	15
front view	89
initialization	13
installation	11
rear view	90
top view	89–90
NV96xx control panels	11, 95

O

office hours	105
Operating temperature	87
Operator	95
Operators, Boolean	81
Options	
checkbox	23
configuration	16
default name set	23
GPIO	80
panel	20
Ordering Information	93
Other documentation	2
Outputs	
GPIO	4, 8, 79–80, 87
relay	4, 8, 79–80
tally	15, 79–80, 87

P

Package contents	11
Page	
add HW panel	16
control panels	16–17
NV9654 configuration	18–19
Page down (button)	5, 15, 30, 50, 65
Page name	34
in tree window	36
Page number, in tree window	36
Page up (button)	5, 15, 30, 50, 65
Page VFD only (option)	25
Page, navigating to	20
Pages, button	4, 49
Pages, system-generated	20
Pane, configuration	16
Panel	
behavioral model	21
initial state	87
IP address	75
mode	21
options	20

organization 4
 test mode 77
 Panel (button) 75
 Panel configuration 15
 Panel configuration (page) 18
 Panel ID 5, 13–14, 24, 30, 64, 75–76
 entry 76
 Panel IP configuration utility 11–12, 88
 Panel lock (button) 30, 65
 Panel/router network 14, 75
 Panels, control 2, 11–12, 95
 NV96xx 11, 95
 part number, document ii
 PDF documents 1
 navigating and searching 1
 phone numbers 105
 Photos
 NV9654, front 3
 NV9654, rear 4
 power cord retention 92
 Physical level 95–96
 Physical specifications, NV9654 86
 PIN 95
 Place this button on all child pages (option) 27
 Port (defined) 95
 Power connectors 12
 Power cord retention 11, 91
 Power specifications
 NV9654 85
 power supply 85
 Power supply 11–12, 86, 91, 93
 Preface
 about PDF documents 1
 chapter structure 1
 terms, conventions and abbreviations 2
 Preset (column) 6
 Preset monitor 22, 87
 Preset release (button) 31, 66
 Preset, clearing 59
 Previous page, Acrobat 2
 Previous page, navigating to 20
 Previous source (button) 9, 31, 66
 Previous view, Acrobat 1
 Protect 9
 Protected devices 9
 Protects 24, 60, 66, 70
 destination 70
 source 70
 PS0001 (power supply) 12, 86, 93
 PS1, PS2 12

Q

Quick source (button) 9, 31, 41, 66, 70

R

Rack mount 12
 Receiving and unpacking shipments 11
 Referrers, in tree window 36
 Relay outputs 4, 8, 79–80
 Relay rule (dialog) 81
 Release 9, 70
 forced 21, 25, 60, 66, 70, 95
 mode 21, 25, 87
 normal 21
 restrictions iii
 Revert to saved (button) 18, 21
 revision, document ii
 RJ-45 connector 12
 RoHS iii
 Router control system 2
 RS-232 connector 86
 Rules, relay 81

S

Safeguards iii
 Safety notices iii
 Salvo
 lists 49, 64
 mode 8–9, 50
 Salvo (button) 31, 51, 66
 Salvo (defined) 95
 Salvo mode 74
 Salvos, system 9, 36, 83
 Save (button) 18, 21, 76–77
 Save preset
 (button) 24, 67
 as default 24
 Save preset (button) 9, 31
 Save preset mode 67
 Scrolling 30, 38, 51, 65
 SE (abbreviation for NV9000-SE Utilities)
 Search, Acrobat 2
 Select dest level (message) 63
 Select src level (message) 62
 Selection
 source 25
 Selection buttons 5, 32, 38, 53, 59, 67
 Semi-automatic data routing 73
 Setup mode 8–9, 14, 50, 76
 Single-destination mode 8, 41–42, 50, 70
 Software 12, 74, 77
 versions 74, 77
 software license iii
 Software, configuration 2

Source	
categories	36, 58
devices	24, 35
lists	49, 57, 64
locks	70
protects	70
selection	25
Source (button)	32, 51, 57, 68, 70
Source (defined)	95
Source is master	
as default	24
mode	72
Source is master (button)	24, 32, 68, 72
Source/destination (button)	9, 32, 68
Special messages, symbol for	2
Specific page, navigating to	20
Specifications	
environmental, NV9654	87
NV9654	85–86
power supply	85
Src/dst immediate take (option)	25
Starting with (option)	35
Static	11
Status (column)	7
Status monitor	22, 87
Strap, power cord retention	11, 91
Subtrees	4
Suffix templates	9, 17, 43–44, 46, 58
support, contact	105
Switching devices	95
Symbols	
for examples	2
for special messages	2
symbols, meaning	iv
System administrator	96
System controller	2, 11–14
NV9000	13
System salvos	9, 36, 83
System-generated	
buttons	25, 57
pages	20

T

Tables	
environmental specifications, NV9654	87
physical specifications, NV9654	86
power specifications, NV9654	85
power specifications, power supply	85
Take (button)	21, 33, 51, 66, 69
Takes	25, 70, 95
Tally	
connector	4, 8, 38, 79
high	2
inputs	8, 15, 79, 87

inputs, connecting	12
interface	8, 12, 15, 86–87
low	2
outputs	15, 79–80, 87
technical support	105
Temperature, operating	87
Templates	9, 17, 43–47, 58
Terms, Boolean	81
Terms, conventions and abbreviations	2
Testing your installation	14
Text, button	20
Tielines	61
Toggle display (button)	69
trademarks	iii
Tree window	36
Tree, button	4
Tree-structured button layout	4, 20, 49

U

Undefined (button)	19, 33, 69
UniConfig	11
United Kingdom, contact	105
Use auto-fill to create a new button page	35
Use custom button text (option)	27
User (button)	75
User interface	15
User's guide, chapter structure	1
User-programmable panel ID	24
User-selectable (option)	43
Using selection buttons	38

V

Velcro strap	11, 91
VFD/SEL toggle (button)	33, 38, 51, 65, 69
Virtual level group	55
Virtual levels	49, 51, 54, 62, 70, 95–96
Virtual levels contract (button)	56
Virtual levels expand (button)	56

W-X-Y-Z

Warnings, hardware	iv
Warranty	iii
WC0053	8, 12, 93
Web site	105
X-Y (mode)	56
X-Y display (button)	60, 69
X-Y mode	3, 5–6, 8–9, 21, 25, 28–29, 33, 38–40, 49–51, 60–61, 67, 69–70, 87, 95–96
XY/MD mode (button)	5, 33, 50, 70



Miranda Technical Support

For technical assistance, please contact the Miranda Technical Support center nearest you:

Americas

Office hours: 9:00 a.m. – 9:00 p.m. (EST)
Telephone: +1-800-224-7882
Fax: +1-514-335-1614
E-mail: techsupp@miranda.com

Asia

Office hours: 9:00 a.m. – 5:00 p.m. (GMT+8)
Telephone: +852-2539-6987
Fax: +852-2539-0804
E-mail: asiotech@miranda.com

Europe, Middle East, Africa, UK

Office hours: 9:00 a.m. – 6:00 p.m. (GMT)
Telephone: +44 118 952 3444
Fax: +44 118 952 3401
E-mail: eurotech@miranda.com

China

Telephone: +86-10-5873-1814
E-mail: asiotech@miranda.com

France

Office hours: 9:00 a.m. – 5:00 p.m. (GMT+1)
Telephone: +33 1 55 86 87 88
Fax: +33 1 55 86 00 29
E-mail: eurotech@miranda.com

Corporate Head Office

Miranda Technologies Inc.

3499 Douglas-B.-Floreani, St-Laurent, Quebec, Canada H4S 2C6

Telephone: 514-333-1772
Fax: 514-333-9828
Web: www.miranda.com



A **BELDEN** BRAND