



grass valley

A **BELDEN** BRAND

SIRIUS 800 ROUTER DOOR PC

FOR USE WITH SIRIUS 830, 840 AND 850 ROUTERS

Operating System Upgrade Manual

Windows XP to Windows Embedded Standard 7(WES7)

Issue 1 Revision 3

2019 March 15

www.grassvalley.com

FCC Compliance

In order to comply with FCC/CFR47: Part 15 regulations, it is necessary to use Mini HDMI to HDMI high-quality triple-screened cable assemblies with integrated ferrite suppression at both ends.

Patent Information

This product may be protected by one or more patents.

For further information, please visit: www.grassvalley.com/patents/

Copyright and Trademark Notice

Copyright © 2019, Grass Valley Canada. All rights reserved.

Belden, Belden Sending All The Right Signals, and the Belden logo are trademarks or registered trademarks of Belden Inc. or its affiliated companies in the United States and other jurisdictions. Grass Valley and Sirius 800 Router are trademarks or registered trademarks of Grass Valley Canada. Belden Inc., Grass Valley Canada, and other parties may also have trademark rights in other terms used herein.

Terms and Conditions

Please read the following terms and conditions carefully. By using Sirius 800 Router documentation, you agree to the following terms and conditions.

Grass Valley hereby grants permission and license to owners of Sirius 800 Router to use their product manuals for their own internal business use. Manuals for Grass Valley products may not be reproduced or transmitted in any form or by any means, electronic or mechanical, including photocopying and recording, for any purpose unless specifically authorized in writing by Grass Valley.

A Grass Valley manual may have been revised to reflect changes made to the product during its manufacturing life. Thus, different versions of a manual may exist for any given product. Care should be taken to ensure that one obtains the proper manual version for a specific product serial number.

Information in this document is subject to change without notice and does not represent a commitment on the part of Grass Valley.

Warranty information is available from the Legal Terms and Conditions section of Grass Valley's website (www.grassvalley.com).

Title	Sirius 800 Router Door PC Operating System Upgrade Manual
Part Number	Issue 1 Revision 3
Revision	2019 March 15, 14:09

Contents

1. About this Manual	1
1.1 Contact Details	1
1.2 Copyright and Disclaimer	1
2. Warnings and Precautions	2
2.1 Explanation of Safety Symbols	4
2.2 Safety Warnings	4
2.3 Lithium Batteries	4
2.4 Safety Standards	5
3. Pre-upgrade Tasks	6
3.1 Before Starting	6
3.2 Equipment Required	6
3.3 Pre-upgrade Checklist	7
4. Back-up XP Door PC Settings	8
4.1 Connecting a USB Hub, Keyboard and Mouse	8
4.2 Workbench and Database Back-up	8
4.3 Door PC settings	12
5. Windows Embedded Standard 7 (WES 7) Installation	13
6. Configure the Windows 7 Door PC	14
6.1 Flipping the Display Orientation	14
6.2 Calibrate the Touchscreen	14
6.3 Configure the Screen Saver	15
6.4 Turn off visual effects	16
6.5 Switch off the Firewall	17
6.6 Switch off the Auto-updates (Optional)	17
6.7 Enable Remote Access	18
6.8 Set the IP Address	19
6.9 Set Password to Never Expire	20
6.10 Set the PC Name	21
7. Install and Configure Workbench	22
7.1 Installing Workbench	22
7.2 Restoring the Database(s)	24
7.3 Completing the Upgrade and Configuring Workbench	26
Contact Us	27

1. About this Manual

This Door PC Operating System Upgrade manual describes the procedure to upgrade the Door PC from Windows XP to Windows Embedded Standard 7 (WES 7). Refer to the Sirius 800 User Manual for Door PC operational details and the Workbench manual for Workbench operation.

If you have any questions regarding the upgrade, please contact Customer Support, see section 1.1 for contact details.

1.1 Contact Details

Customer Support

For details of our Regional Customer Support Offices please visit the web site link below:

<https://www.grassvalley.com/contact/support/>

Customers with a support contract should call their personalized number, which can be found in their contract, and be ready to provide their contract number and details.

1.2 Copyright and Disclaimer

Copyright protection claimed includes all forms and matters of copyrightable material and information now allowed by statutory or judicial law or hereinafter granted, including without limitation, material generated from the software programs which are displayed on the screen such as icons, screen display looks etc.

Information in this manual and software are subject to change without notice and does not represent a commitment on the part of Grass Valley. The software described in this manual is furnished under a license agreement and can not be reproduced or copied in any manner without prior agreement with Grass Valley or their authorized agents.

Reproduction or disassembly of embedded computer programs or algorithms prohibited.



No part of this publication can be transmitted or reproduced in any form or by any means, electronic or mechanical, including photocopy, recording or any information storage and retrieval system, without permission being granted, in writing, by the publishers or their authorized agents.

Grass Valley operates a policy of continuous improvement and development. Grass Valley reserves the right to make changes and improvements to any of the products described in this document without prior notice.

2. Warnings and Precautions

Explanation of Safety Symbols

GB

-  This symbol refers the user to important information contained in the accompanying literature. Refer to manual.
-  This symbol indicates that hazardous voltages are present inside. No user serviceable parts inside. This unit should only be serviced by trained personnel.

Safety Warnings



CAUTION: These servicing instructions are for use by qualified personnel only.



To reduce risk of electric shock do not perform any servicing other than that contained in the Operating Instructions unless you are qualified to do so.

Refer all servicing to qualified service personnel.

- To reduce the risk of electric shock, do not expose this appliance to rain or moisture.
- Always ensure that the unit is properly earthed and power connections correctly made.
- This equipment must be supplied from a power system providing a **PROTECTIVE EARTH** connection and having a neutral connection which can be reliably identified.
- The power outlet supplying power to the unit should be close to the unit and easily accessible

Légende :

F

-  Ce symbole indique qu'il faut prêter attention et se référer au manuel.
-  Ce symbole indique qu'il peut y avoir des tensions électriques à l'intérieur de l'appareil. Ne pas intervenir sans l'agrément du service qualifié.

Précaution d'emploi :





Attention: Les procédures de maintenance ne concernent que le service agréé. Afin de réduire le risque de choc électrique, il est recommandé de se limiter aux procédures d'utilisation, à moins d'en être qualifié. Pour toute maintenance, contacter le service compétent.

- Pour réduire le risque de choc électrique, ne pas exposer l'appareil dans un milieu humide.
- Toujours s'assurer que l'unité est correctement alimentée, en particuliers à la liaison à la terre.
- La source électrique de cet équipement doit posséder une connexion à la terre, ainsi qu'une liaison « neutre » identifiable.
- La prise électrique qui alimente l'appareil doit être proche de celle-ci et accessible.

Simboli di sicurezza:

I

-  Questo simbolo indica l'informazione importante contenuta nei manuali appartenenti all'apparecchiatura. Consultare il manuale.
-  Questo simbolo indica che all'interno dell'apparato sono presenti tensioni pericolose. Non cercare di smontare l'unità. Per qualsiasi tipo di intervento rivolgersi al personale qualificato.

Attenzione:





Le istruzioni relative alla manutenzione sono ad uso esclusivo del personale qualificato. E' proibito all'utente eseguire qualsiasi operazione non esplicitamente consentita nelle istruzioni. Per qualsiasi informazione rivolgersi al personale qualificato.

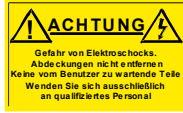
- Per prevenire il pericolo di scosse elettriche è necessario non esporre mai l'apparecchiatura alla pioggia o a qualsiasi tipo di umidità.
- Assicurarsi sempre, che l'unità sia propriamente messa a terra e che le connessioni elettriche siano eseguite correttamente.
- Questo dispositivo deve essere collegato ad un impianto elettrico dotato di un sistema di messa a terra efficace.
- La presa di corrente deve essere vicina all'apparecchio e facilmente accessibile.

Erklärung der Sicherheitssymbole

D

-  Dieses Symbol weist den Benutzer auf wichtige Informationen hin, die in der begleitenden Dokumentation enthalten sind.
-  Dieses Symbol zeigt an, dass gefährliche Spannung vorhanden ist. Es befinden sich keine vom Benutzer zu wartenden Teile im Geräteinneren. Dieses Gerät sollte nur von geschultem Personal gewartet werden

Sicherheits-Warnhinweise





Die angeführten Service-/Reparatur-Anweisungen sind ausschließlich von qualifiziertem Service-Personal auszuführen. Um das Risiko eines lektroschocks zu reduzieren, führen Sie ausschließlich die im Benutzerhandbuch beschriebenen Anweisungen aus, es sei denn, Sie haben die entsprechende Qualifikation. Wenden Sie sich in allen Service-Fragen an qualifiziertes Personal.

- Um das Risiko eines Elektroschocks zu reduzieren, setzen Sie das Gerät weder Regen noch Feuchtigkeit aus.
- Stellen Sie immer sicher, dass das Gerät ordnungsgemäß geerdet und verkabelt ist.
- Dieses Equipment muss an eine Netzsteckdose mit Schutzleiter angeschlossen werden und einen zuverlässig identifizierbaren Nullleiter haben.
- Die Netzsteckdose sollte nahe beim Gerät und einfach zugänglich sein.

Explicación de los Símbolos de Seguridad

ESP

-  Éste símbolo refiere al usuario información importante contenida en la literatura incluida. Referirse al manual.
-  Éste símbolo indica que voltajes peligrosos están presentes en el interior. No hay elementos accesibles al usuario dentro. Esta unidad sólo debería ser tratada por personal cualificado.

Advertencias de Seguridad





Las instrucciones de servicio cuando sean dadas, son sólo para uso de personal cualificado. Para reducir el riesgo de choque eléctrico no llevar a cabo ninguna operación de servicio aparte de las contenidas en las instrucciones de operación, a menos que se esté cualificado para realizarlas. Referir todo el trabajo de servicio a personal cualificado.

- Para reducir el riesgo de choque eléctrico, no exponer este equipo a la lluvia o humedad.
- Siempre asegurarse de que la unidad está propiamente conectada a tierra y que las conexiones de alimentación están hechas correctamente.
- Este equipo debe ser alimentado desde un sistema de alimentación con conexión a TIERRA y teniendo una conexión neutra fácilmente identificable.
- La toma de alimentación para la unidad debe ser cercana y fácilmente accesible.

Forklaring på sikkerhedssymboler

DK

-  Dette symbol gør brugeren opmærksom på vigtig information i den medfølgende manual.
-  Dette symbol indikerer farlig spænding inden i apparatet. Ingen bruger servicebare dele i apparatet på brugerniveau. Dette apparat må kun serviceres af faglærte personer..

Sikkerhedsadvarsler



Serviceinstruktioner er kun til brug for faglærte servicefolk. For at reducere risikoen for elektrisk stød må bruger kun udføre anvisninger i betjeningsmanualen. Al service skal udføres af faglærte personer.

- For at reducere risikoen for elektrisk stød må apparatet ikke udsættes for regn eller fugt.
- Sørg altid for at apparatet er korrekt tilsluttet og jordet.
- Dette apparat skal forbindes til en nettilslutning, der yder BESKYTTENDE JORD og 0 forbindelse skal være tydeligt markeret.
- Stikkontakten, som forsyner apparatet, skal være tæt på apparatet og let tilgængelig.

Förklaring av Säkerhetssymboler



- Denna symbol hänvisar användaren till viktig information som återfinns i litteraturen som medföljer. Se manualen.
- Denna symbol indikerar att livsfarlig spänning finns på insidan. Det finns inga servicevänliga delar inne i apparaten. Denna apparat få endast repareras av utbildad personal.

Säkerhetsvarningar



Serviceinstruktioner som anges avser endast kvalificerad och utbildad servicepersonal. För att minska risken för elektrisk stöt, utför ingen annan service än den som återfinns i medföljande driftinstruktionerna, om du ej är behörig. Överlåt all service till kvalificerad personal.

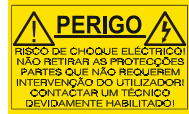
- För att reducera risken för elektrisk stöt, utsätt inte apparaten för regn eller fukt.
- Se alltid till att apparaten är ordentligt jordad samt att strömtiliförseln är korrekt utförd.
- Denna apparat måste bli försörd från ett strömsystem som är försedd med jordanslutning (⊕) samt ha en neutral anslutning som lätt identifierbar.
- Vägguttaget som strömförsörjer apparaten bör finnas i närheten samt vara lättillgänglig.

Símbolos de Segurança



- O símbolo triangular adverte para a necessidade de consultar o manual antes de utilizar o equipamento ou efectuar qualquer ajuste.
- Este símbolo indica a presença de voltagens perigosas no interior do equipamento. As peças ou partes existentes no interior do equipamento não necessitam de intervenção, manutenção ou manuseamento por parte do utilizador. Reparações ou outras intervenções devem ser efectuadas apenas por técnicos devidamente habilitados.

Avisos de Segurança



As instruções de manutenção fornecidas são para utilização de técnicos qualificados. Para reduzir o risco de choque eléctrico, não devem ser realizadas intervenções no equipamento não especificadas no manual de instalações a menos que seja efectuadas por técnicos habilitados.

- Para reduzir o risco de choque eléctrico, não expor este equipamento à chuva ou humidade.
- Assegurar que a unidade está sempre devidamente ligada à terra e que as ligações à alimentação estão correctas.
- O sistema de alimentação do equipamento deve, por razões de segurança, possuir ligação a terra de protecção (⊕) e ligação ao NEUTRO devidamente identificada.
- A tomada de energia à qual a unidade está ligada deve situar-se na sua proximidade e facilmente acessível.

Turvamerkkien selitys



- Tämä merkki tarkoittaa, että laitteen mukana toimitettu kirjallinen materiaali sisältää tärkeitä tietoja. Lue käyttöohje.
- Tämä merkki ilmoittaa, että laitteen sisällä on vaarallisen voimakas jännite. Sisäpuolella ei ole mitään osia, joita käyttäjä voisi itse huoltaa. Huollon saa suorittaa vain alan ammattilainen.

Turvaohjeita



Huolto-ohjeet on tarkoitettu ainoastaan alan ammattilaisille. Älä suorita laitteelle muita toimenpiteitä, kuin mitä käyttöohjeissa on neuvottu, ellei ole asiantuntija. Voit saada sähköiskun. Jätä kaikki huoltotoimet ammattilaiselle.

- Sähköiskujen välttämiseksi suojaa laite sateelta ja kosteudelta.
- Varmistu, että laite on asianmukaisesti maadoitettu ja että sähkökytkennät on tehty oikein.
- Laitteelle tehoa syöttävässä järjestelmässä tulee olla SUOJAMAALIIKÄNTÄ (⊕) ja nolllaliitännän on oltava luotettavasti tunnistettavissa.
- Sähköpistorasian tulee olla laitteen lähellä ja helposti tavoitettavissa.

Επεξήγηση των Συμβόλων Ασφαλείας



Αυτό το σύμβολο παραπέμπει το χρήστη σε σημαντικές πληροφορίες που συμπεριλαμβάνονται στο συνοδευτικό εγχειρίδιο.



Αυτό το σύμβολο υποδεικνύει ότι στο εσωτερικό υφίστανται επικίνδυνες ηλεκτρικές τάσεις. Στο εσωτερικό δεν υπάρχουν επισκευάσιμα μέρη. Αυτή η μονάδα πρέπει να επισκευάζεται μόνο από ειδικά εκπαιδευμένο προσωπικό.

Προειδοποίηση Ασφαλείας



Οδηγίες επισκευής, όπου παρέχονται, αναφέρονται αποκλειστικά και μόνο σε εξειδικευμένο προσωπικό. Για να μειωθεί ο κίνδυνος ηλεκτροπληξίας, μην εκτελείτε επισκευές παρά μόνο τις συμπεριλαμβανόμενες στο εγχειρίδιο των οδηγιών, εκτός και αν έχετε τα απαραίτητα προσόντα για να το κάνετε. Όλες οι επισκευές να εκτελούνται από ειδικά εκπαιδευμένο προσωπικό.

- Για να μειώσετε τον κίνδυνο ηλεκτροπληξίας μην εκθέτετε τη συσκευή σε βροχή ή υγρασία.
- Πάντα να εξασφαλίζετε τη σωστή γείωση της συσκευής και τη σωστή σύνδεση των συνδέσμων τροφοδοσίας.
- Ο εξοπλισμός πρέπει να τροφοδοτείται από ένα σύστημα τροφοδοσίας που να εξασφαλίζει ΠΡΟΣΤΑΤΕΥΤΙΚΗ ΓΕΙΩΣΗ (⊕) και να έχει καθορισμένες θέσεις ουδέτερου και φάσης.
- Ο εξοπλισμός που τροφοδοτεί τη συσκευή θα πρέπει να βρίσκεται κοντά στη συσκευή και να είναι εύκολα προσβάσιμος.

2.1 Explanation of Safety Symbols



This symbol refers the user to important information contained in the accompanying literature.



This symbol indicates that hazardous voltages are present inside. No user serviceable parts inside. This system should only be serviced by trained personnel.

2.2 Safety Warnings



Servicing instructions, where given, are for use by qualified personnel only. To reduce the risk of electric shock, do not perform any actions on this equipment other than contained in the operating instructions, unless you are qualified to do so. Refer all servicing to qualified personnel.



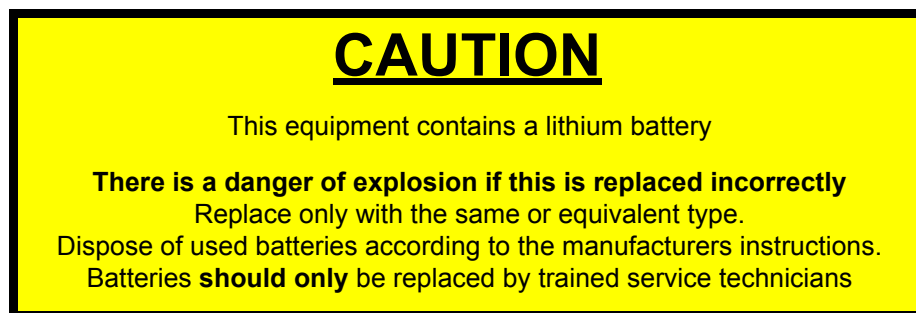
To reduce the risk of electric shock, do not expose this appliance to rain or moisture.

Always ensure that the unit is properly earthed and power connections correctly made.

This equipment must be supplied from a power system providing a PROTECTIVE EARTH connection and having a neutral connection which can be reliably identified.

The power circuit breakers or switches supplying power to the unit should be close to the unit and easily accessible.

2.3 Lithium Batteries



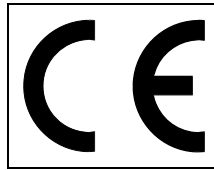
The Door PC contains a Lithium battery to provide non-volatile memory.

Note:

- Used batteries should be disposed of in accordance with the manufacturers instruction and any specific local legislation regarding the recycling of waste batteries and accumulators
- Ensure that the same make and model of battery is used if replacement is required (a manufacturer recommended equivalent can be used if the original type is not available)

2.4 Safety Standards

This equipment complies with the following standards:



EN60950-1 2006

Safety of information Technology Equipment Including Electrical Business Equipment.

UL1419 (3rd Edition) - UL File E193966

Standard for Safety - Professional Video and Audio equipment

EMC Standards

This unit conforms to the following standards:

EN55103-1:1996 (Environment E4)

Electromagnetic Compatibility, Product family standard for audio, video, audio-visual and entertainment lighting control apparatus for professional use. Part 1. Emission

EN55103-2:1996 (Environment E2)

Electromagnetic Compatibility, Product family standard for audio, video, audio-visual and entertainment lighting control apparatus for professional use. Part 2. Immunity

Federal Communications Commission Rules, 47 CFR, Part 15, Subpart B (Class A)

EMC Performance of Cables and Connectors

Grass Valley products are designed to meet or exceed the requirements of the appropriate European EMC standards. In order to achieve this performance in real installations it is essential to use cables and connectors with good EMC characteristics.

All signal connections (including remote control connections) shall be made with screened cables terminated in connectors having a metal shell. The cable screen shall have a large-area contact with the metal shell.

COAXIAL CABLES

Coaxial cables connections (particularly serial digital video connections) shall be made with high-quality double-screened coaxial cables such as Belden 1694A or Belden 1505A.

D-TYPE CONNECTORS

D-type connectors shall have metal shells making good RF contact with the cable screen. Connectors having "dimples" which improve the contact between the plug and socket shells, are recommended.

3. Pre-upgrade Tasks

This manual describes the following processes:

- Pre-upgrade information, equipment required and checklist - this section.
- Back-up the current Windows XP Door PC settings - see section 4.
- Install Windows Embedded Standard 7 (WES 7) - see section 5.
- Configure Windows 7 Door PC settings - see section 6.
- Re-install and configure Workbench - see section 7.

3.1 Before Starting

- This manual assumes you have a good working knowledge of Windows operating systems and the Workbench system.
- Read through the complete upgrade procedure and make sure you understand all of the steps before starting work on the Door PC.
- It is important that all of the information in the pre-upgrade checklist is noted down and easily accessible before starting the upgrade, see section 3.3.

Important:

Failure to complete the checklist correctly may result in a failed upgrade.

- Check the contents of the FGAEY S800-W7UG upgrade kit:
 - WES 7 Runtime installation USB memory stick
 - WES 7 license label
 - Workbench installation USB memory stick
 - A printed copy of this upgrade manual

3.2 Equipment Required

To perform the upgrade from Windows XP to Windows Embedded Standard 7 (WES 7), the following equipment is required:

- USB peripherals
 - Keyboard
 - Mouse
 - USB hub (not required if Keyboard has an integrated hub)
 - USB extension cable (for easier USB port access)
- WES 7 Runtime installation USB memory stick (Part of this Kit FGAEY S800-W7UG)
- Workbench installation USB memory stick (Part of this Kit FGAEY S800-W7UG).

- Spare USB memory stick for back-up purposes (alternatively the Workbench USB memory stick can be used)

3.3 Pre-upgrade Checklist

It is important that all of the information in the pre-upgrade checklist is noted down and easily accessible before starting the upgrade. This information will be required for the upgrade as the entire door PC hard drive will be formatted as part of the upgrade process.

Important:

Failure to complete the checklist correctly may result in a failed upgrade.

<u>Pre-Upgrade Checklist</u>	
Details required	Write details in this column
Router Controller A Details (see section 4.2 for details)	
Controller Name	
Controller IP Address	
Controller Software Version	
Router Controller B Details (see section 4.2 for details, if fitted)	
Controller Name	
Controller IP Address	
Controller Software Version	
Door PC Workbench Details (see section 4.3 for details):	
Workbench Version	
Backup Database Filename(s)	
Door PC Details (see section 4.3 for details):	
Computer Description	
Computer Name	
Door PC IP Address Details (see section 4.3 for details):	
IP Address	
Subnet Mask	
Default Gateway	
Preferred DNS	
Alternate DNS	

Table 1. Pre-upgrade Checklist

4. Back-up XP Door PC Settings

4.1 Connecting a USB Hub, Keyboard and Mouse

The upgrade process requires the connection of three USB devices at the same time (mouse, keyboard and the USB memory stick). As the Door PC only has two USB ports a USB hub must be connected to carry out the upgrade.

1. Connect your USB hub to one of the Door PC USB sockets shown in Fig 2.
2. Connect a USB keyboard and mouse to the USB hub and they will be recognized by the Door PC and the drivers will be installed automatically.

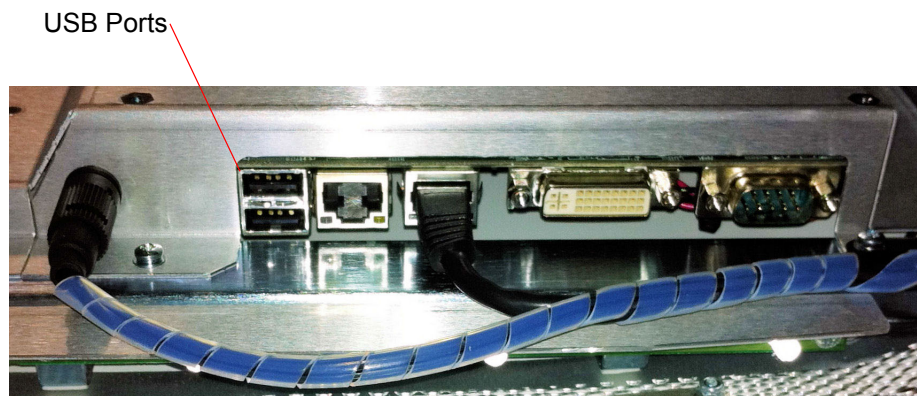
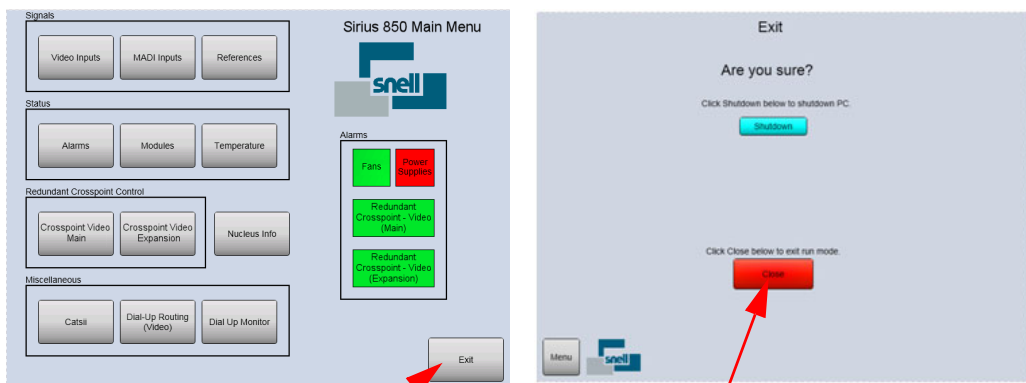


Fig 1. Door PC Ports Viewed From Below

4.2 Workbench and Database Back-up

1. Close down the LiveRunner Screen by clicking on the **Exit** button but do not shutdown the Door PC.
2. Click on the **Close** button when prompted.

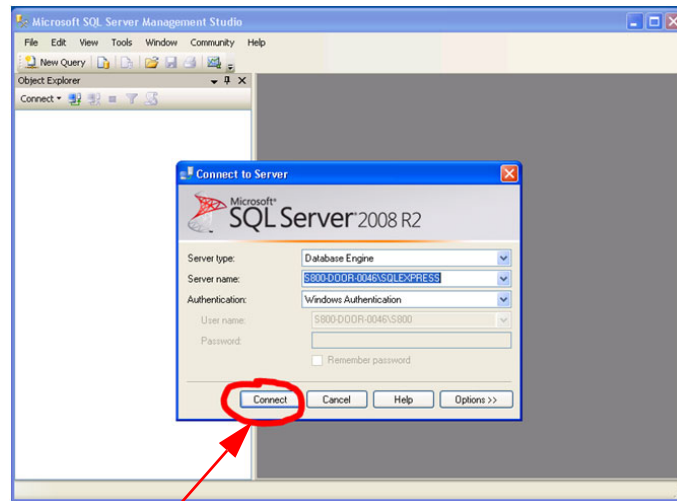


1. Click on the **Exit** button to start closing LiveRunner

2. Click on the **Close** button

Fig 2. Closing Live Runner on the Door PC

3. Open up Workbench from the shortcut, or Start menu if no shortcut available. Take a note of the Controller Names and IP Settings in the frame and write them in the checklist in section 3.3.
4. Close down Workbench.
5. Insert the Back-up USB memory stick and create a Back-up folder for the Door PC.
6. Open up **SQL Server 2008 R2 Server Management Studio**, from the **Start** menu.
7. Click on the **Connect** button to log in, and then browse the Database objects in the Object Explorer.



Click **Connect** to log in.

Fig 3. Log in to SQL Server

8. Back-up the Database(s), primarily this will be just the Workbench one, but there could be others that also need backing up.
 - a Highlight the database to back up
 - b Right click to bring up context menu
 - c Select **Tasks**
 - d Choose **BackUp ...**

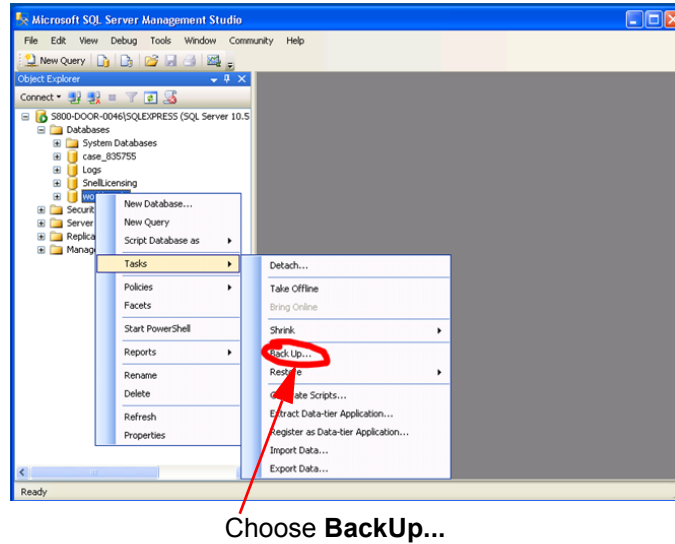


Fig 4. SQL Server BackUp

- e Highlight and Remove any old backup paths in the Destination list box

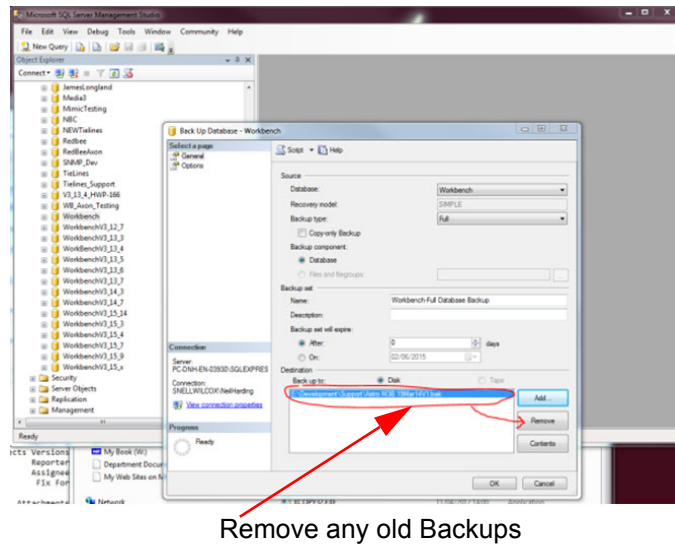
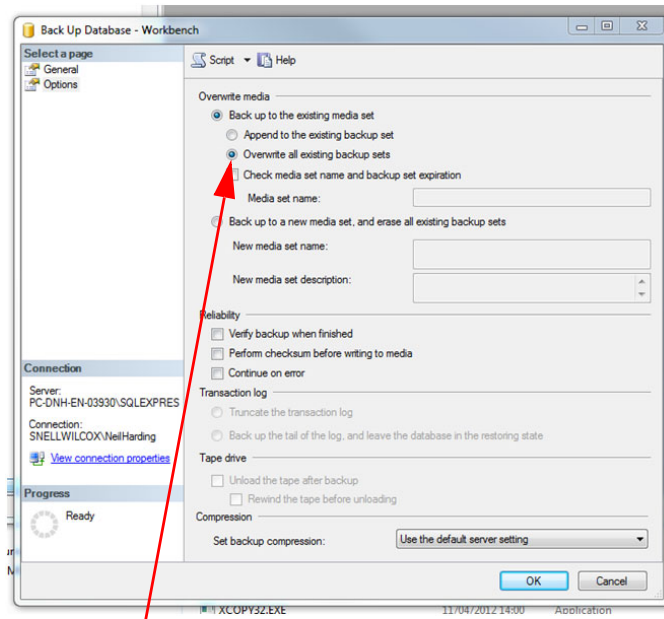


Fig 5. Remove any Old Backups

- f Then click **Add...** and browse to the location on the USB stick you are putting the Database Backups. Type in the name of the back-up file, not forgetting to include the '.bak' file extension (this isn't automatically added for you)
- g Under the **Select a page->Options** ensure you have the **Overwrite all existing backup set**.



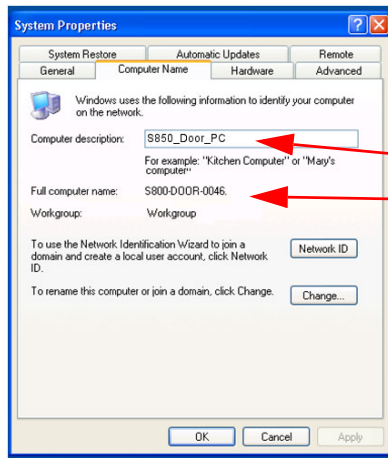
Ensure **Overwrite all existing backup sets** is selected

Fig 6. SQL BackUp Options

- h Click **OK**, start the back up process and add the backup filename to the checklist in section 3.3.
- i Repeat this process for all the Databases being backed up.

4.3 Door PC settings

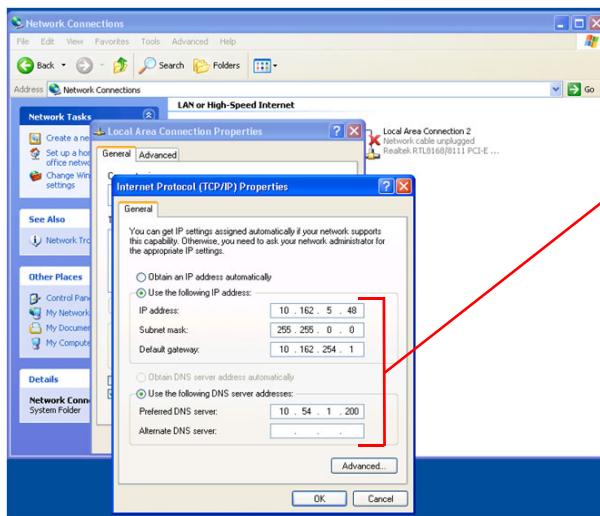
1. Click **Start**, then right-click on **My Computer** and select **Properties**. Under the **Computer Name** tab take a note of the **Computer Description** and the **Full computer name** and add them to the checklist in section 3.3.



Add the Door PC **Computer Description** and the **Full computer name** to the checklist, see section 3.3

Fig 7. Door PC Computer Properties

2. Close the dialog.
3. Click **Start**, open **Control Panel**, open **Network Connections** and then **Local Area Connection properties** of the connected LAN. Select Internet Protocol (TCP/IP) from the list, click the **Properties** button. Write down all the IP address settings for the PC in the check list in section 3.3.



Add the Door PC **IP Address** details to the checklist, see section 3.3

Fig 8. Door PC IP Address Details

Important:

WARNING: The process of installing the new Windows Embedded Standard 7 onto the Door PC will format the entire HDD drive, so back-up any other important data before proceeding to the next step. This data could include but is not limited to:

- RollCall and/or older versions of Workbench
 - Any additional applications in regular use
4. Copy the Workbench shortcuts (LiveRunner and Workbench) onto the Backup USB drive if using a Database server, or different database names other than the default "Workbench".
 5. Open the Shortcut properties, and take a note if Workbench is running from a local Database or a remote network Database.

5. Windows Embedded Standard 7 (WES 7) Installation

Important:

WARNING: This Installation will format the Hard Drive; do not proceed unless you are certain that everything has been backed up.

1. Safely remove the USB drive you used to backup the database(s) and insert the Door PC WES 7 USB memory stick.
2. Re-start the PC using Windows Start menu

Note:

From this point the display will be inverted. This will be corrected in section 6.

3. Enter the BIOS by pressing the **[Delete]** key (not the Backspace key) on the keyboard to enter Set up.
4. Using the arrow keys, scroll to Advanced BIOS features and press the **[Enter]** key.
5. Scroll to Hard Disk Boot Priority and press the **[Enter]** key.
6. Follow the screen instruction to set the Boot order so that the USB drive is number 1 in the list of drives.
7. Press the **[F10]** key followed by **y** and **[Enter]** to **Save and Exit**.
8. The PC will now reboot, and run the WES 7 installation USB.
9. Wait whilst the Windows files are extracted and the machine boots up. The BVM logo will be displayed when the boot is complete (this takes approximately 5 minutes).
10. Type **y** followed by the **[Enter]** key when asked at the DOS prompt about disk partitions.
11. WES 7 will now install. This will take about 5 minutes.
12. When asked to reboot the machine to complete the installation, type **y** followed by the **[Enter]** key and the Door PC will power down.
13. Remove the WES 7 USB stick and then power the PC back on using the power button on the rear of the door.
14. After rebooting, WES 7 will continue to install extracting files and changing system settings. This will take some time and Door PC will reboot a number of times automatically (this will take approximately 5 minutes).
15. Installation is complete after the final reboot when the dialog box is displayed that says the machine will restart in less than 30 seconds.
16. The Door PC will now reboot with the SAM/Grass Valley wallpaper installed.
17. Stick the Microsoft WES 7 License sticker on the rear of the Door PC.

Important:

The Microsoft WES 7 License sticker must be mounted on the rear of the Door PC for the installation to be legally licensed.

6. Configure the Windows 7 Door PC

6.1 Flipping the Display Orientation

The Door PC screen mounted in the door is inverted, so in order to use it sensibly the display needs to be flipped.

1. Right-click on the desktop and select **Screen Resolution** from the right click menu.
2. From the **Orientation** drop down box, choose **Landscape (flipped)**, see Fig 9.

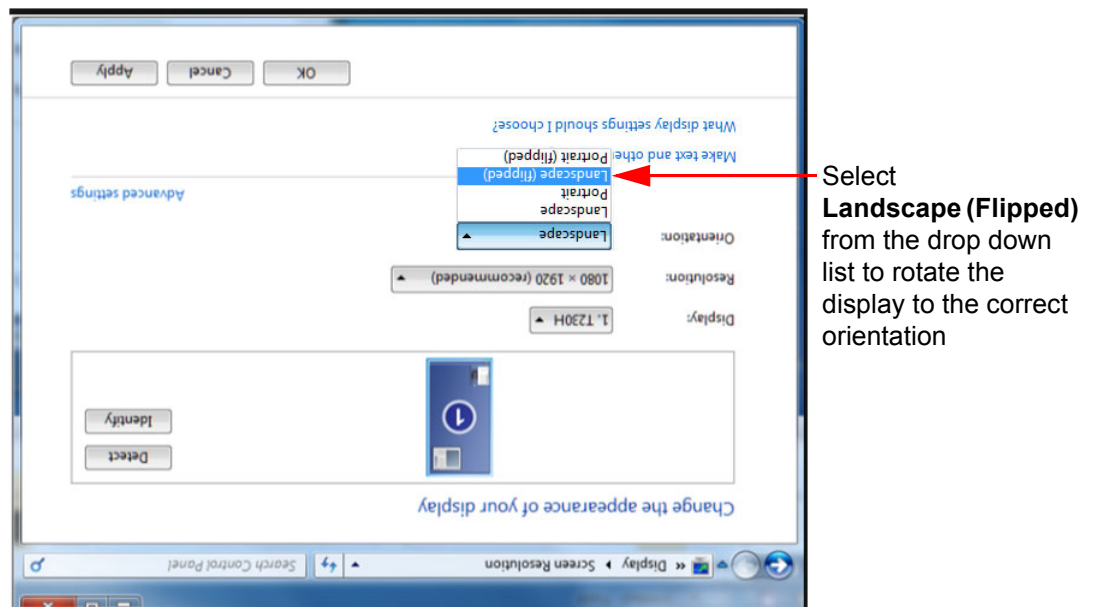


Fig 9. Flipping the Door PC Screen

3. Click the **OK** button to change the display orientation.
4. When the keep or revert dialog is displayed, click on the **Keep Changes** button.

6.2 Calibrate the Touchscreen.

The Touchscreen driver now needs calibrating

1. Click the **Start** button.
2. Select **All Programs** and then select the **DMC Touch screen panel configuration option** from the **DMC** program group.
3. With the **Calibration** button highlighted on the left hand side, click the **Calibrate** button on the right hand side.
4. Using your finger to press the center of each of the four crosses as they appear in each corner of the screen.

5. Press the **OK** button when it appears.
6. Close the calibration screen.

6.3 Configure the Screen Saver

1. Insert the WES 7 USB stick.
2. Open the **Snell Screen Saver** folder.
3. Run **install_flash_player_13_active_x.exe** to install Adobe Flash player.
4. Accept the Flash player terms and conditions and install with all default settings.
5. When the installation is complete click on the **Done** button.
6. Run **Snell3dscreensaver New.exe** and click on the **Continue** button to install the screen saver.
7. Click the **Finish** button when prompted.
8. Safely remove the WES 7 USB stick.
9. Right-click on the desktop and select **Personalize** from the menu.

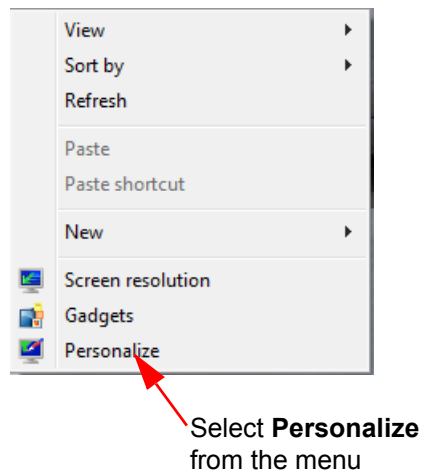
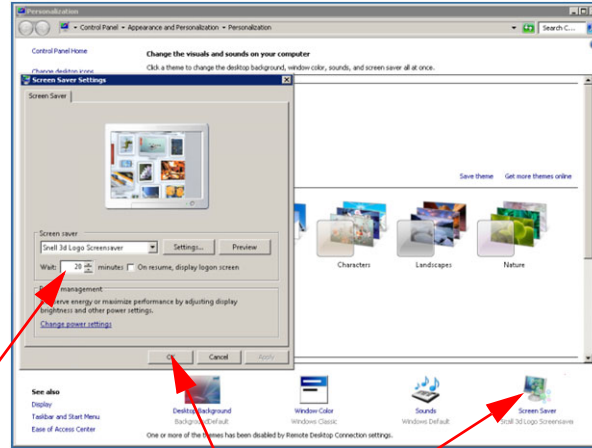


Fig 10. Right-Click Menu

10. Click on the **Screen Saver** icon in the bottom right of the personalization screen as shown in Fig 11.
11. From the **Screen Saver Settings** dialog set the **Wait** time to 20 minutes.
12. Click on the **OK** button to save the settings.



11. Set the **Wait** time to 20 minutes

10. Click on the **Screen Saver** icon

12. Click on the **OK** button to save the settings

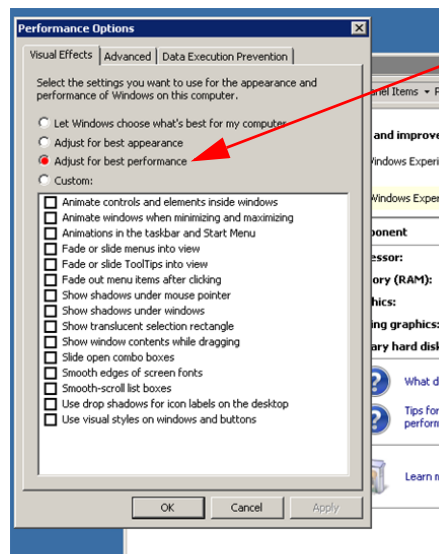
Fig 11. Configure Screen Saver

13. Close the Personalization screen.

6.4 Turn off visual effects

To adjust all visual effects for best performance:

1. Click on the **Start** button and open the **Control Panel**.
2. In the control panel search box type **performance information** and click on **Performance Information and Tools** in the results list.
3. Click on the **Adjust visual effects** option on the top left of the screen.
4. Click on the **Visual Effects** tab and select the **Adjust for best performance** radio button as shown in Fig 12.



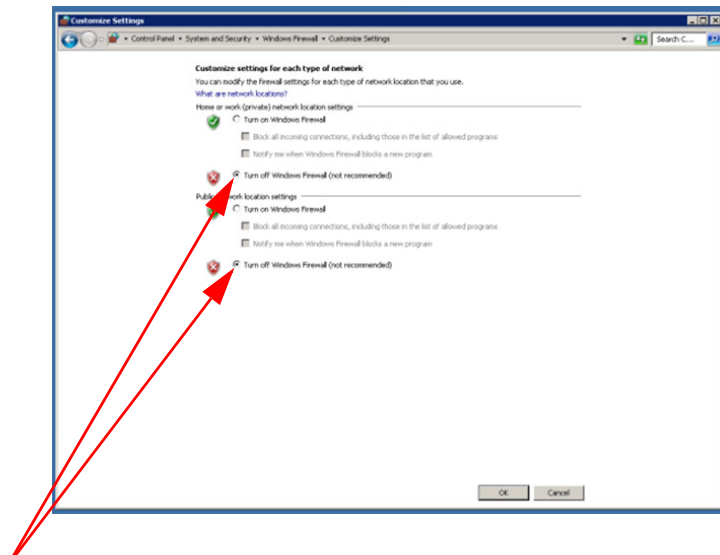
Select the **Adjust for best performance** radio button

Fig 12. Visual Effects Tab

5. Click on the **OK** button and close the other windows.

6.5 Switch off the Firewall

1. Click on the **Start** button and open the **Control Panel**.
2. In the control panel search box type **windows firewall** and click on **Windows Firewall** in the results list.
3. Select the **Turn Windows Firewall on or off** option from the top left of the **Windows Firewall** screen.
4. Select both of the **Turn off Windows Firewall (not recommended)** radio buttons.



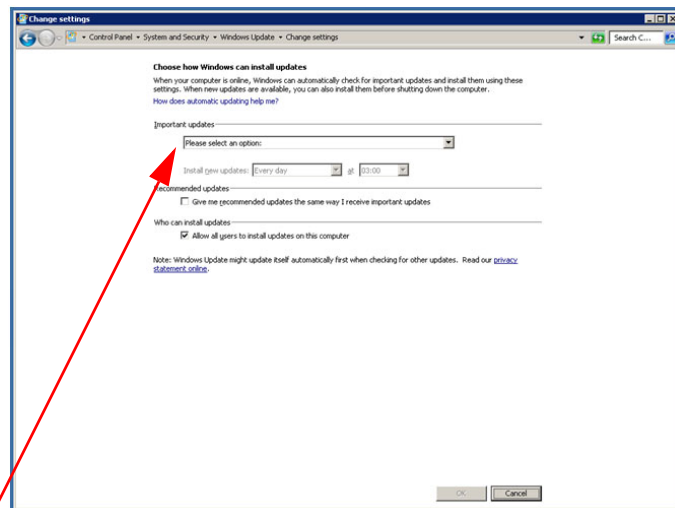
Select both of the **Turn off Windows Firewall (not recommended)** radio buttons as shown

Fig 13. Windows Firewall Screen

5. Click on the **OK** button to accept the changes.

6.6 Switch off the Auto-updates (Optional)

1. Type **windows update** in the control panel search box and click on **Windows Update** in the results list.
2. Select the **Change Settings** option from the top left of the **Windows Update** screen.
3. Select the **Never check for updates (not recommended)** option from the **Important Updates** drop-down box, see Fig 14.



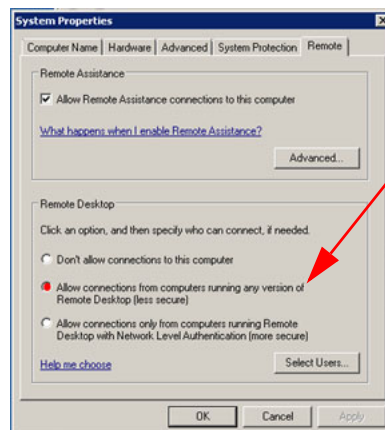
Select the **Never check for updates (not recommended)** option

Fig 14. Windows Update Screen

4. Click on the **OK** button to save the changes.

6.7 Enable Remote Access

1. Type **Allow remote access** in the control panel search box and select the **Allow remote access to your computer** option.
2. From the **Remote** tab of the **System Properties** dialog select the **Allow connections from computers running any version of Remote Desktop (less secure)** radio button as shown in Fig 15.



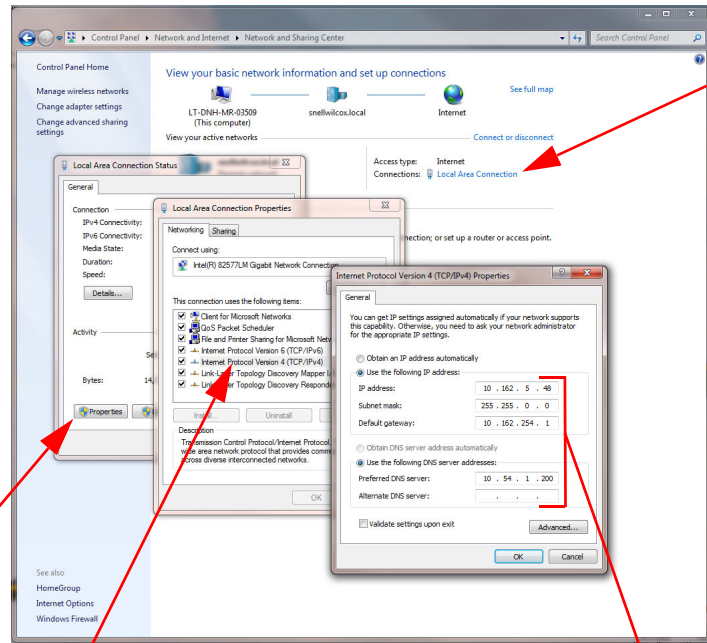
2. Select the **Allow connections from computers running any version of Remote Desktop (less secure)** radio button

Fig 15. System Properties, Remote Tab

3. Click on the **OK** button of the confirmation dialog.
4. Click the **OK** button to save the changes close the window.

6.8 Set the IP Address

1. Type **Network and Sharing** in the control panel search box and select the **Network and Sharing Center** option, see Fig 16.
2. Click on the **Local Area Connection** in the **View your active networks** section, see Fig 16.



2. Click on the **Local Area Connection** shown here

3. Click on the **Properties** button

4. Highlight the **Internet Protocol Version 4 (TCP/IPv4)** entry and then click on the **Properties** button

5. Select the **Use the following IP address** option and then enter the Door PC IP address and DNS details from the checklist

Fig 16. Door PC IP and DNS Address Setting

3. Click on the **Properties** button of the **Local Area Connection Status** dialog.
4. From the **Local Area Connection Properties** dialog highlight the **Internet Protocol Version 4 (TCP/IPv4)** entry by clicking on it (do not Untick this option). The **Properties** button will now be active, click on the **Properties** button.

Note:

- When highlighting the **Internet Protocol Version 4 (TCP/IPv4)** option make sure that you don't accidentally Untick it.

5. From the **Internet Protocol Version 4 (TCP/IPv4) Properties** dialog select the **Use the following IP address** radio button so that the IP address details and DNS details can be added.
6. Enter the Door PC IP address and DNS details as noted down in the checklist in section 3.3.
7. Click on the **OK** button to save the settings.
8. You be asked for a Network location/type, set this to **Work**.
9. Close the dialog boxes.

6.9 Set Password to Never Expire

1. Click the **Start** button.
2. In the search box type **Group Policy** and double click on **Edit Group Policy** in the search results.
3. In the Local Group Policy Editor expand **Computer Configuration, Windows Settings, Security Settings, Account Policies** and then click on **Password Policy**, see Fig 17.

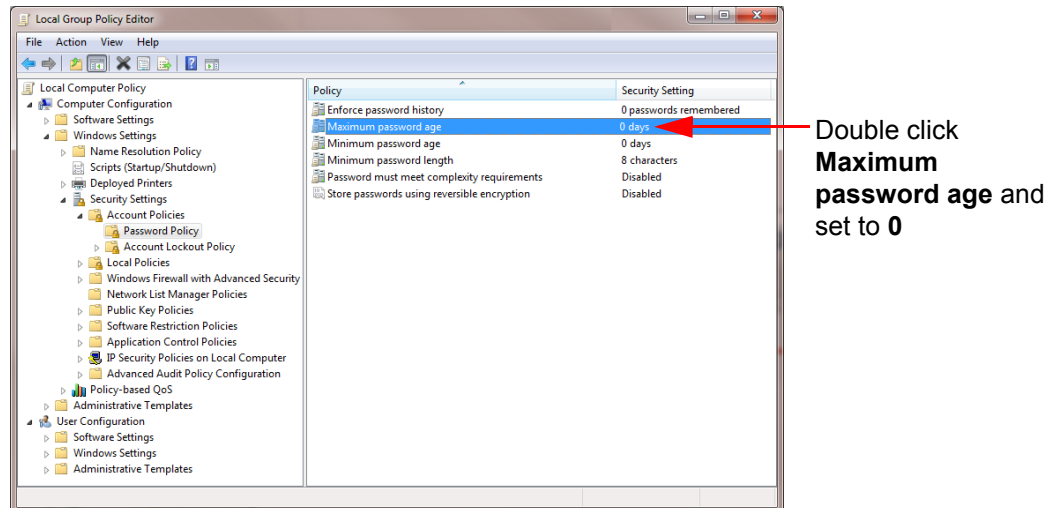


Fig 17. Local Group Policy Editor, set Maximum Password Age

4. Double click on the **Maximum password age** option and set the value in the Maximum password age properties dialog to 0, see Fig 18.

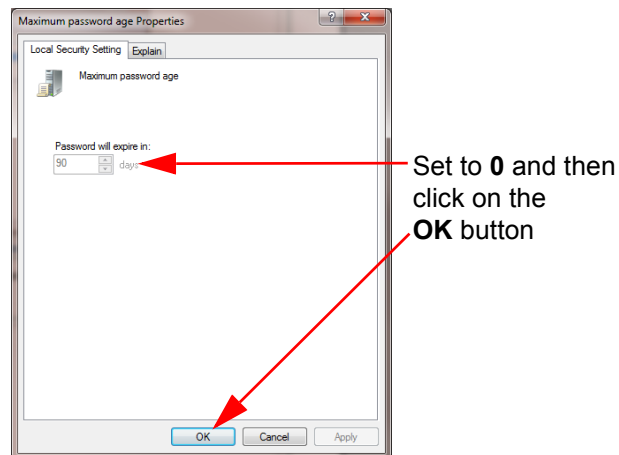


Fig 18. Set Maximum Password Age to 0

5. Click the **OK** button to set the value and then close down the local group policy editor.

6.10 Set the PC Name

1. Type **rename this computer** in the control panel search box and select the **Rename this computer** option from the results list.
2. Enter the computer description from the checklist in the **Computer description** text box, see section 3.3
3. From the **Computer Name** tab of the **System Properties** dialog click on the **Change** button.

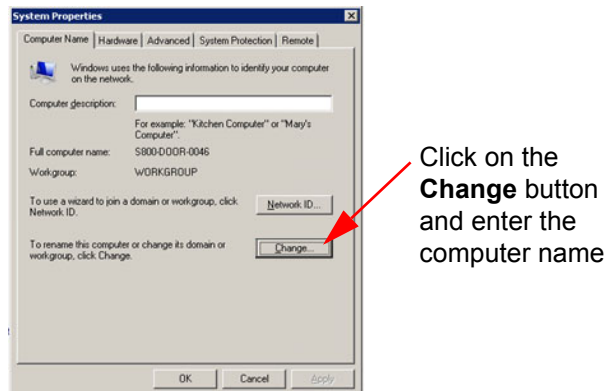


Fig 19. System Properties, Computer Name Tab

4. In the **Computer Name/Domain Changes** dialog enter the computer name from the checklist (see section 3.3) and click the **OK** button to save the changes and close the dialog.
5. A dialog is displayed requesting a restart to complete the name change, select the **Restart now** option.

Important:

The restart step must be carried out before installing Workbench as this ensures the correct details are used for the database when it is reinstated.

6. The computer will now be restarted, this will take sometime as it is the first reboot since installation.

7. Install and Configure Workbench

7.1 Installing Workbench

1. Insert the Workbench installation USB memory stick supplied with the upgrade kit and run the **WorkbenchInstaller** program to install Workbench in the Default location.
2. This is a fresh install so the SQL boxes must be selected, see Fig 20.
3. Click on the **Next >** button to start the installation and follow the prompts to install to the default location.

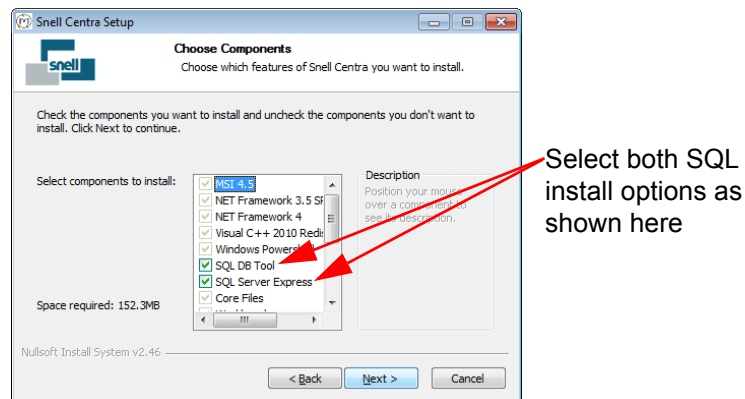


Fig 20. Workbench Installation Components Screen

4. The installation will take some time and the Door PC will reboot a couple of times. Once complete the **Configuration Helper** is displayed as shown in Fig 21.

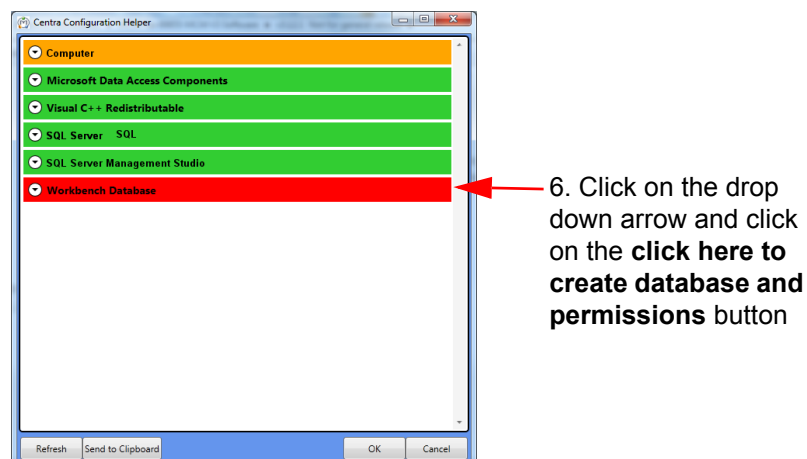


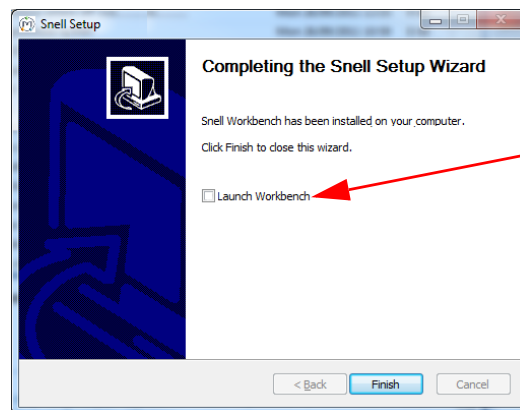
Fig 21. Configuration Help Screen

5. The Computer component will be amber because the Door PC screen resolution is below the recommended minimum for full Workbench operation. As the Door PC is designed to run LiveRunner rather than full Workbench this is not an issue.
6. The Workbench Database component will be red as Workbench has not yet been associated with a database, this is normal.

Click on the Workbench Database component and then click on the **click here to create database and permissions** button to create a local Workbench database. This step will take some time and various DOS boxes are displayed during the process.

When this process is complete the Workbench component will change to green.

7. Click on the Centra Configuration Helper **OK** button to complete the installation.
8. From the **Installation Complete** dialog uncheck the **Launch Workbench** check box as shown in Fig 22. This will prevent Workbench starting when you click on the **Finish** button.



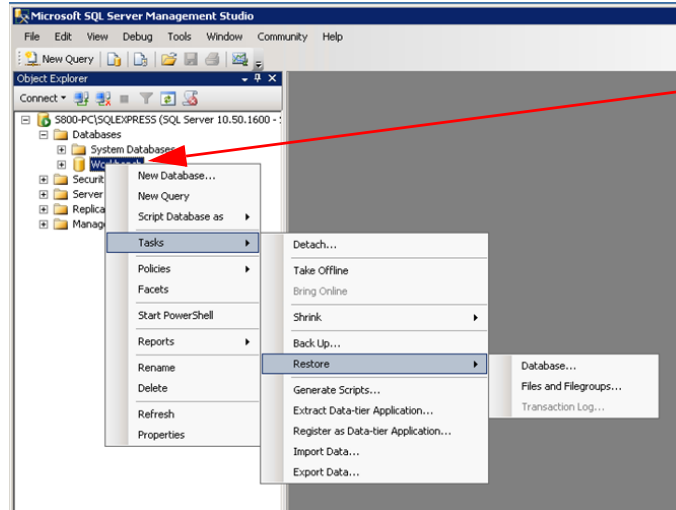
Uncheck the **Launch Workbench** check box before clicking on the **Finish** button

Fig 22. Installation Complete Dialog

7.2 Restoring the Database(s)

The previously backed up databases must now be restored.

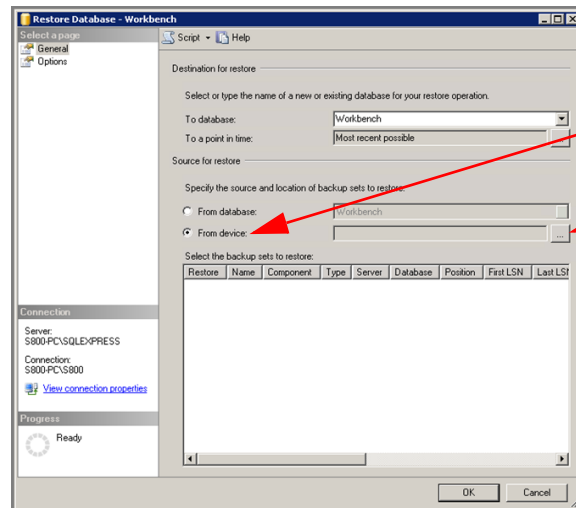
1. Open SQL Server Management Studio.
2. Connect to SQL Server.
3. Browse the Object Explorer, right click on the database to be restored and select **Tasks > Restore > Database...** as shown in Fig 23.



Right click on the database to be restored and select **Tasks > Restore > Database...**

Fig 23. Right Click on the Workbench Database

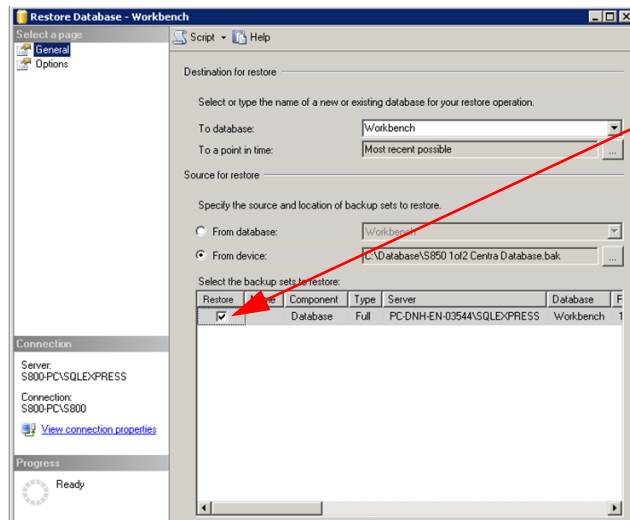
4. From the **Restore Database** screen select the **From device** radio button and click on the **Browse [...]** button as shown in Fig 24. Now browse to the Database backup folder created earlier and select the backup file.



Select the **From device** radio button and then click on the **Browse** button

Fig 24. Restore Database Select Database Backup File

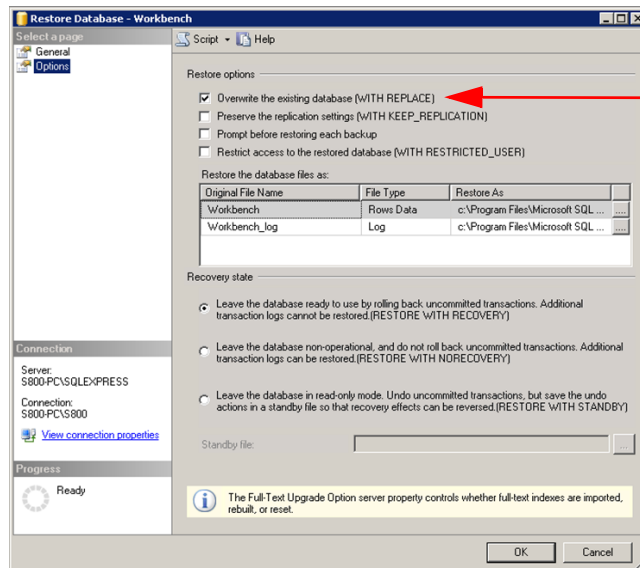
5. On the **General** page of the **Restore Database** screen select the **Restore** check box as shown in Fig 25.



On the **General** page of the **Restore Database** screen, check the **Restore** check box

Fig 25. Restore Database Screen - General Page

- 6. On the **Options** page of the **Restore Database** screen select the **Overwrite the existing database (WITH REPLACE)** check box as shown in Fig 26.



Select the **Overwrite the existing database (WITH REPLACE)** check box

Fig 26. Restore Database Screen - Options Page

- 7. Click on the **OK** button to start the restore process.

7.3 Completing the Upgrade and Configuring Workbench

1. Copy the backed-up Shortcuts from USB stick to the desktop.
2. Right click on the **Startup** entry in the **Start, All Programs** menu and select **Explore**.
3. Copy the LiveRunner Shortcut to the Windows Startup folder so that LiveRunner starts automatically when Windows starts.
4. Open Workbench from the Desktop shortcut and click on the **OK** button when asked to update the database.
5. Once Workbench has opened check that the Controller Settings are still displayed correctly.
6. Copy back/reinstall any other programs that were backed up prior to the upgrade.
7. Restart the Door PC to ensure all settings are configured correctly.
8. Wait for WES 7 to restart and for LiveRunner to start up.



Grass Valley Technical Support

For technical assistance, contact our international support center, at 1-800-547-8949 (US and Canada) or +1 530 478 4148.

To obtain a local phone number for the support center nearest you, please consult the Contact Us section of Grass Valley's website (www.grassvalley.com).

An on-line form for e-mail contact is also available from the website.

<https://www.grassvalley.com/contact/support/>

Corporate Head Office

Grass Valley
3499 Douglas-B.-Floreani
St-Laurent, Quebec H4S 2C6
Canada
Telephone: +1 514 333 1772
Fax: +1 514 333 9828
www.grassvalley.com