



grass valley

A **BELDEN** BRAND

ICONTROL ROUTER

POWERFUL ROUTER CONTROL OVER IP

Quick Start Guide

M446-2800-105

2016-11-24

www.grassvalley.com

Copyright and Trademark Notice

Copyright © 2001–2016, Grass Valley Canada. All rights reserved.

Belden, Belden Sending All The Right Signals, and the Belden logo are trademarks or registered trademarks of Belden Inc. or its affiliated companies in the United States and other jurisdictions. Grass Valley, iControl, Kaleido-X, NVISION, and Densité are trademarks or registered trademarks of Grass Valley Canada. Belden Inc., Grass Valley Canada, and other parties may also have trademark rights in other terms used herein.

ATTENTION: Please read the following terms and conditions carefully. By using iControl Router documentation, you agree to the following terms and conditions:

Grass Valley hereby grants permission and license to owners of iControl Application Servers to use their product manuals for their own internal business use. Manuals for Grass Valley products may not be reproduced or transmitted in any form or by any means, electronic or mechanical, including photocopying and recording, for any purpose unless specifically authorized in writing by Grass Valley.

A Grass Valley manual may have been revised to reflect changes made to the product during its manufacturing life. Thus, different versions of a manual may exist for any given product. Care should be taken to ensure that one obtains the proper manual version for a specific product serial number.

Information in this document is subject to change without notice and does not represent a commitment on the part of Grass Valley.

Warranty Policies

Warranty information is available from the Legal Terms and Conditions section of Grass Valley's website (www.grassvalley.com).

Title	iControl Router Quick Start Guide
Part Number	M446-2800-105
Revision Date	24 November 2016 6:06 pm

Setting Up iControl Router

The Grass Valley iControl Router Software (also referred to as iRouter, or iC Router Control) allows you to create a virtual routing environment where physical router resources can be arranged into one or more logical configurations that are optimized for operational needs. This document is intended to give you the information you need to establish a basic router configuration using iControl Router.

Summary

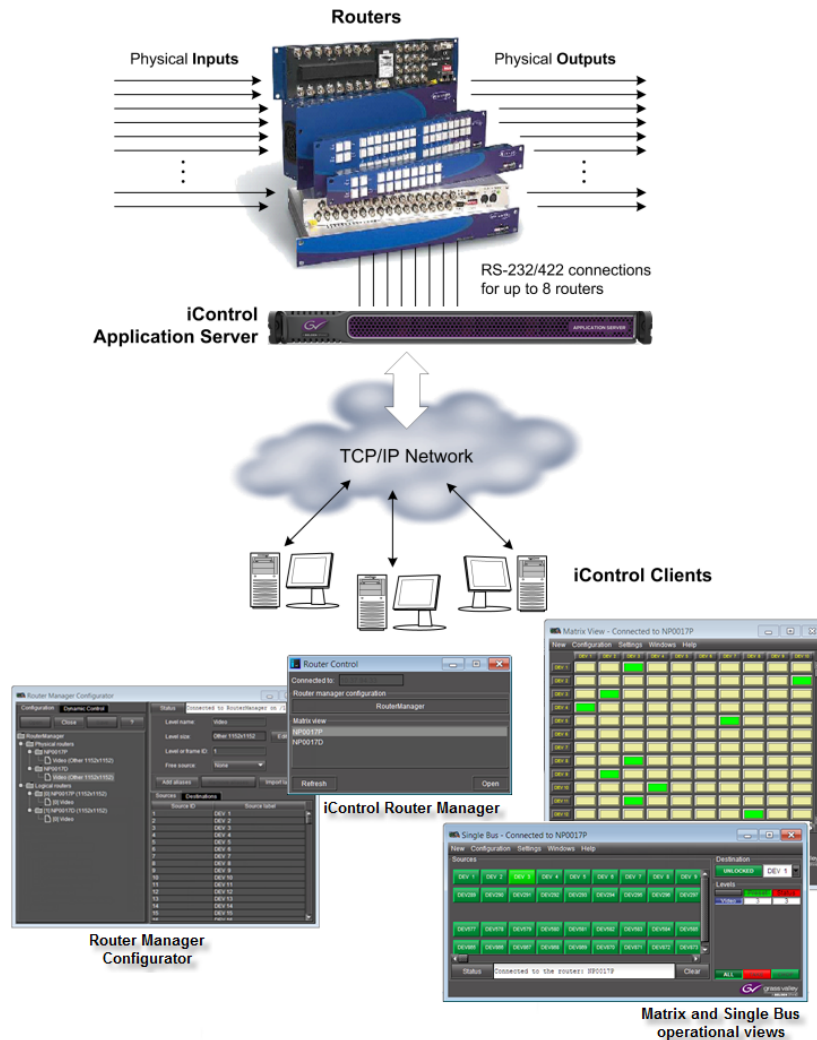
<i>Task 1: Verify Physical Connections</i>	2
<i>Task 2: Verify that the iControl Server is Running</i>	3
<i>Task 3: Verify that the Router Plug-in is Installed</i>	5
<i>Task 4: Open Router Manager Configurator</i>	6
<i>Task 5: Add or Import a Physical Router</i>	10
<i>Task 6: Add Aliases for your Physical Input Ports</i>	20
<i>Task 7: Add a Logical Router</i>	23
<i>Task 8: Add Levels to a Logical Router</i>	26
<i>Task 9: Add a Mapping to a Logical Router</i>	28
<i>Task 10: View the Newly Configured Router</i>	31

Overview

iControl Router (also referred to as iRouter, or iC Router Control) is one of the main modules built into iControl. Based on Grass Valley's standalone iControl Router software, it is automatically installed with iControl.

Setting up iControl Router

Setting Up iControl Router



Overview of iControl Router

Setting Up iControl Router

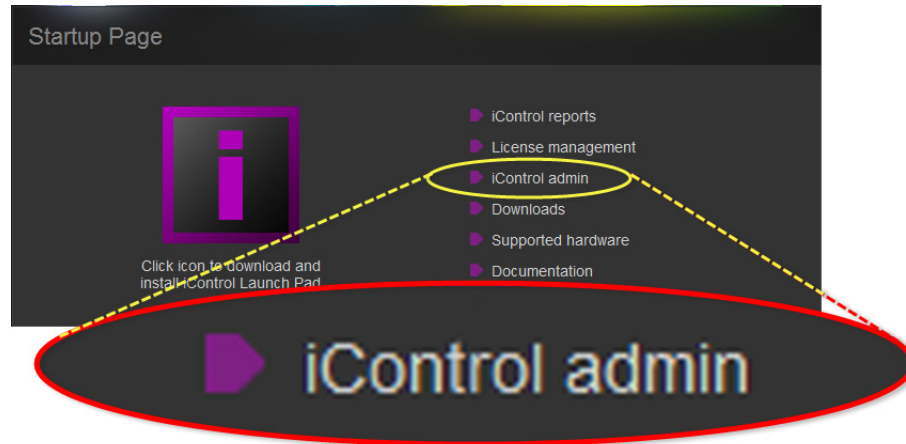
Task 1: Verify Physical Connections

The iControl Application Server and the routers to be controlled must be physically connected, either by serial cables or via an Ethernet switch. Before continuing with the iControl Router setup, make sure that all router cables are properly connected, and that the routers themselves are configured (e.g. DIP switch settings) if necessary. Similarly, check the serial and Ethernet connections on the iControl Application Server (refer to the *iControl User Guide* for more information).

Task 2: Verify that the iControl Server is Running

To ensure that the iControl Server is running

1. On the *Startup* page, click **iControl admin**.



SYSTEM RESPONSE: If you have not yet logged in to iControl admin, the system prompts you for a user name and password.

2. Enter a valid user name and password.

IMPORTANT: If the task you would like to perform requires administrator privileges, log on with the **admin** user profile.

Default profile:

- User name: miranda
- Password: icontrol

SYSTEM RESPONSE: The *iControl admin* page appears.

3. On the *iControl admin* page, click **Services management**, under **iControl Router services**.

SYSTEM RESPONSES:

- The *Services management* page appears.
- All iControl services available on the current Application Server are listed in a table, one service per row. A row's background color indicates the service state:
 - Green indicates an active service
 - Blue indicates an inactive service
 - Red indicates a problem with the service.

4. Verify that the Router Manager Service is running (its row should be green). If it is not running, select **Start**, and then click **Apply**.

Setting up iControl Router
 Verify that the iControl Server is Running

Services management

Service Name	Description	Start time	AutoStart	Start/Stop/Restart	Log
Audio/Video Fingerprint Analyzer	Provides support for distributed and multi-point content fingerprint analysis (e.g. lip-sync detection)	Stopped	<input type="checkbox"/> Auto	● / ● / ●	show log
Bridgetech VBC service	Start Bridgetech VBC service.	Stopped	<input type="checkbox"/> Auto	● / ● / ●	show log
RMI daemon	RMI Server Daemon	23 16:03:37 2016	<input checked="" type="checkbox"/> Auto	● / ● / ●	show log
Router Manager Service	Router Manager Service is responsible for all routers connected to a local machine	Stopped	<input checked="" type="checkbox"/> Auto	○ / ● / ●	show log
VTR Scheduler Service	VTR Scheduler Module which is used to schedule a VTR	Stopped	<input type="checkbox"/> Auto	● / ● / ●	show log
Virtual Service	Virtual Service Manager for building virtual panels such as procamps	Stopped	<input type="checkbox"/> Auto	● / ● / ●	show log
iControl Services Gateway	iControl Services Gateway Server for third-party API to interface with any iControl card services. Required for RCP-100 client and to change line scope from iControl Web player	Stopped	<input type="checkbox"/> Auto	● / ● / ●	show log
Daemon Health Monitor	Process that monitors and restarts daemon processes	N/A	N/A	N/A	show log

Apply Reset iControl Stop iControl Start

5. Check that the Router Manager Service has AutoStart enabled. If not, select **Auto**, and then click **Apply**.

RMI daemon	RMI Server Daemon	Wed Nov 23 16:03:37 2016	<input checked="" type="checkbox"/> Auto	● / ● / ●	show log
Router Manager Service	Router Manager Service is responsible for all routers connected to a local machine	Wed Nov 23 20:55:21 2016	<input checked="" type="checkbox"/> Auto	● / ● / ●	show log
VTR Scheduler Service	VTR Scheduler Module which is used to schedule a VTR	Stopped	<input type="checkbox"/> Auto	● / ● / ●	show log
Virtual Service	Virtual Service Manager for building virtual panels such as procamps	Stopped	<input type="checkbox"/> Auto	● / ● / ●	show log
iControl Services Gateway	iControl Services Gateway Server for third-party API to interface with any iControl card services. Required for RCP-100 client and to change line scope from iControl Web player	Stopped	<input type="checkbox"/> Auto	● / ● / ●	show log
Daemon Health Monitor	Process that monitors and restarts daemon processes	N/A	N/A	N/A	show log

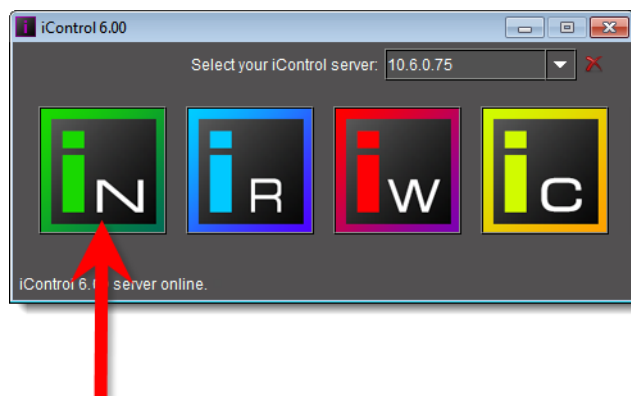
Apply Reset iControl Stop iControl Start

Task 3: Verify that the Router Plug-in is Installed

The iControl General Status Manager (GSM) must have its iControl Router plug-in installed in the Alarm Browser in order for iControl to be able to monitor routers connected to the Application Server.

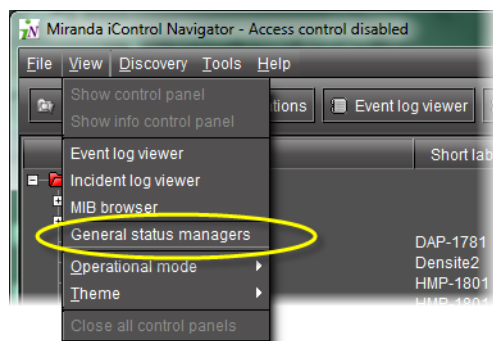
To verify that the router plug-in has been added

1. On the iControl *Startup* page, click the massive **i** icon.
SYSTEM RESPONSE: The *iControl Launch Pad* executable file is downloaded to your local file system.
2. Double-click the executable file.
3. In iControl Launch Pad, either type in the IP address of your Application Server or select from the list of available IP addresses.
4. Click the **iC Navigator** icon.

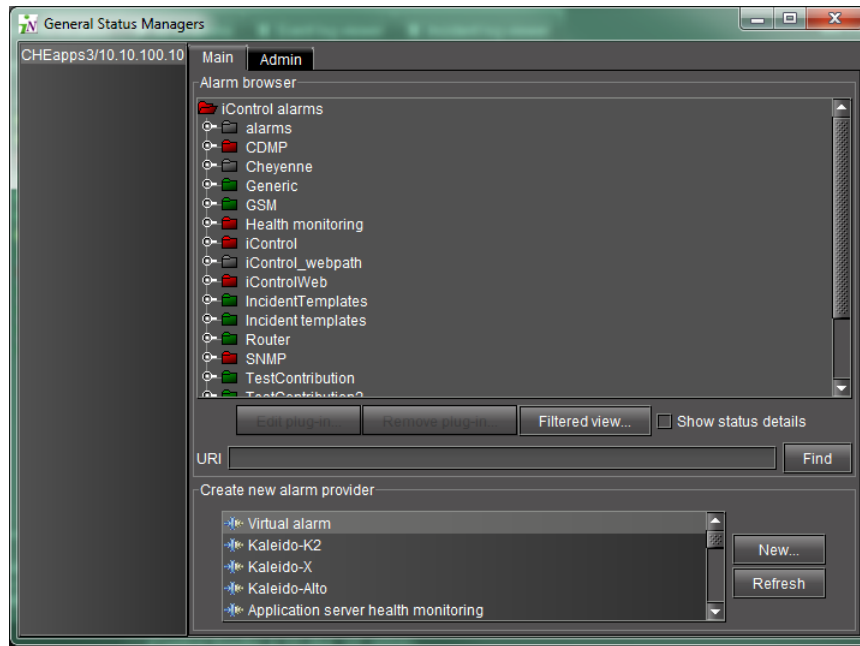


SYSTEM RESPONSE: The iC Navigator splash screen appears followed by the main iC Navigator window.

5. On the **View** menu, click **General status managers**.



SYSTEM RESPONSE: The **General Status Managers** window appears.



6. In the **Create new alarm provider** list, select **Router**.

Note: If you do not see the router plug-in, in the list of alarm providers, this means that it has already been installed.

7. Click **New**.

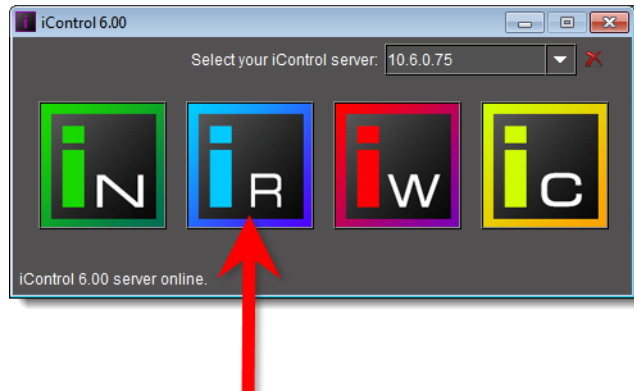
SYSTEM RESPONSES:

- After a few seconds, a message appears advising you that the plug-in has been installed.
- A folder called Router should appear in the **General Status Managers** window.

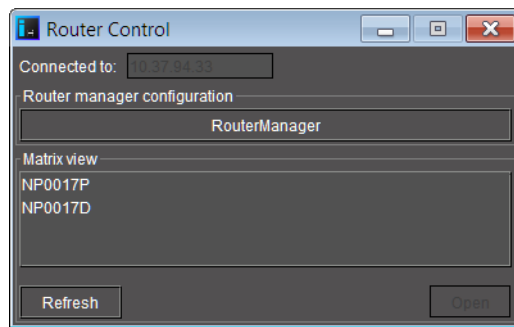
Task 4: Open Router Manager Configurator

To open Router Manager Configurator

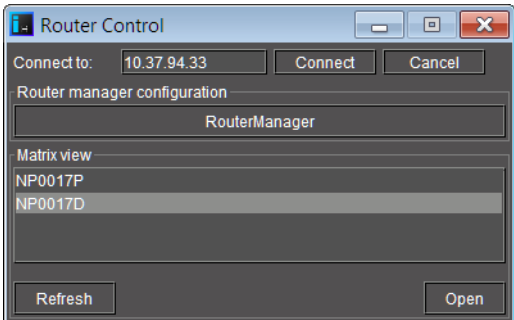
1. On iControl Launch Pad, either type in the IP address of your Application Server or select from the list of available IP addresses.
2. Click the **iC Router Control** icon.



SYSTEM RESPONSE: The **Router Control** window appears.



3. Perform the following tasks in **Router Control**, as required:

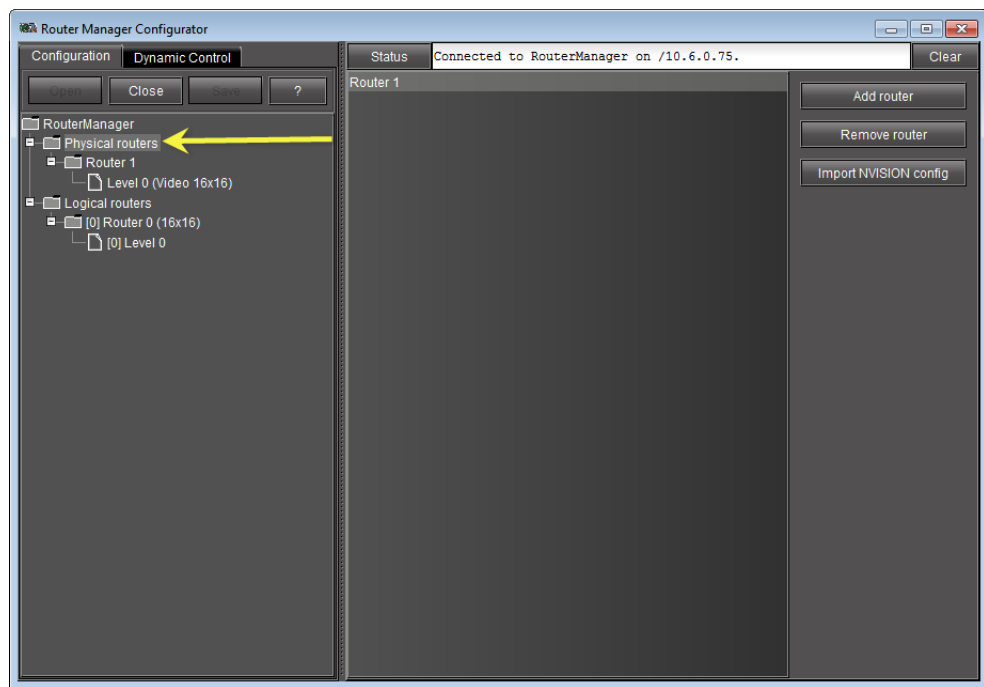
To do this...	...do this...
<p>Connect to a Router Manager service on a different Application Server (other than the one whose IP address is currently displayed)</p>	<ol style="list-style-type: none"> 1. Click inside the Connected to box. 2. Delete the existing IP address. 3. Type the new Router Manager's IP address. 4. Click Connect. 
<p>Open Router Manager Configurator</p>	<ul style="list-style-type: none"> • Click RouterManager.

(Continued)

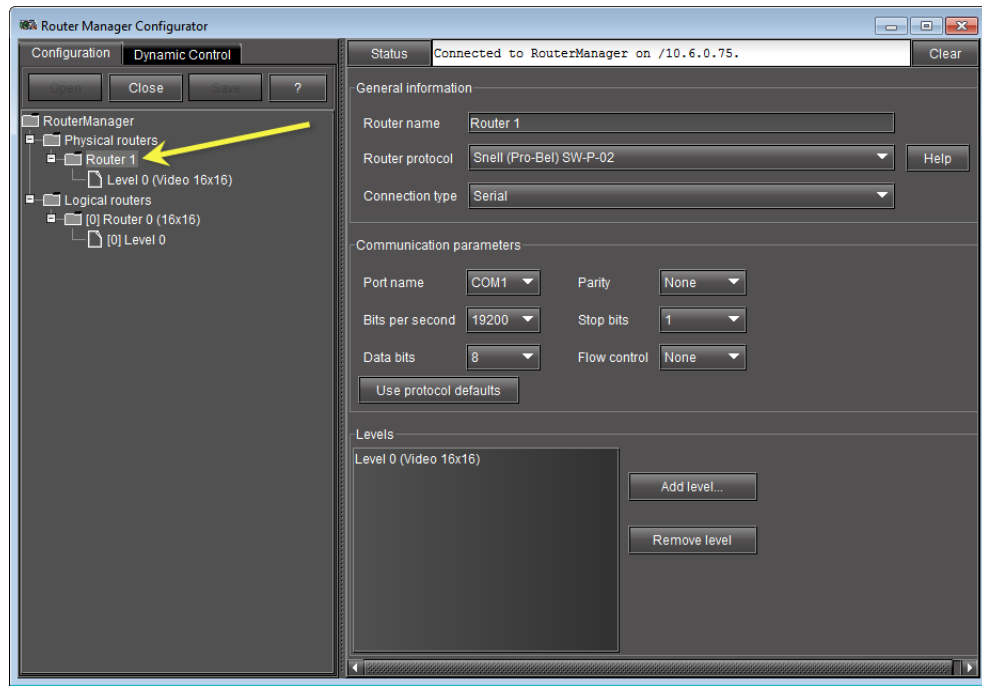
To do this...	...do this...
Start router control software.	1. Select the desired item under Matrix view . 2. Click Open .

4. In **Router Manager Configurator**, select a router component on the left to view related information and options on the right.

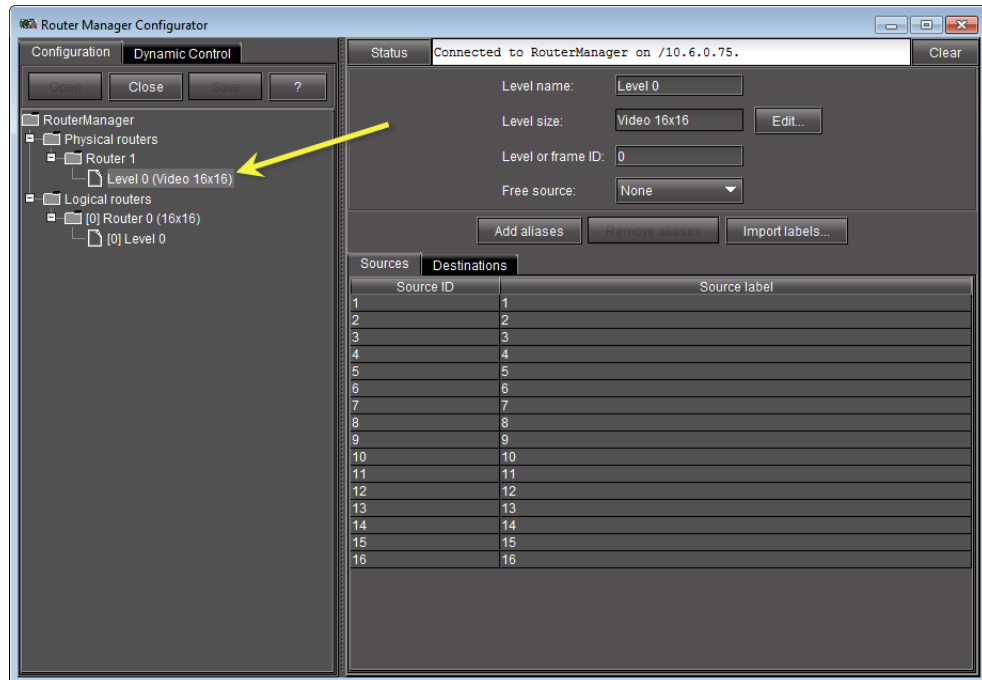
For example, click **Physical Routers** to view a list of routers currently defined in iControl Router.



Click the folder corresponding to a specific router to view its configuration details.



Click on a level to view its configuration details.



Task 5: Add or Import a Physical Router

You can choose either to add a physical router and configure it manually, or else import an NVISION router's configuration information directly from an NVISION router controller. Perform one of the following two options, as required:

- "Adding a Physical Router" on page 10, and then "Add Levels to a Physical Router" on page 13

OR,

- "Importing an NVISION Physical Router Configuration" on page 16

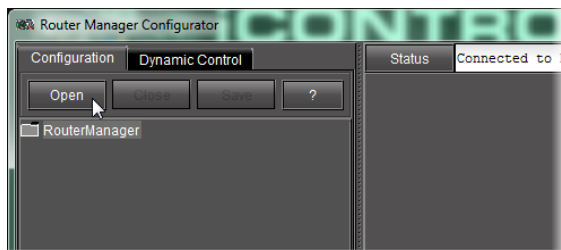
Adding a Physical Router

REQUIREMENT

Before beginning this procedure, make sure you have opened Router Manager Configurator (see [page 6](#)).

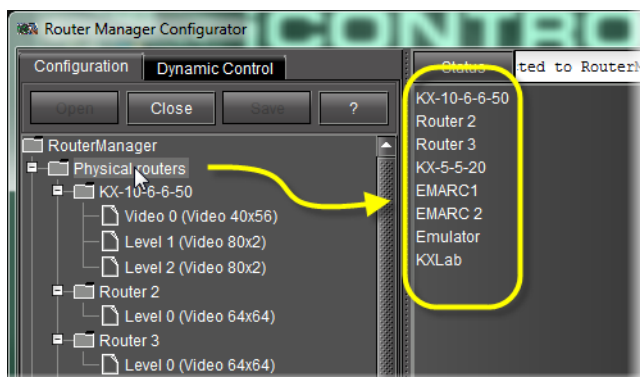
To add a physical router

1. Select the router manager folder, and then click **Open**.



2. Select the **Physical Routers** folder.

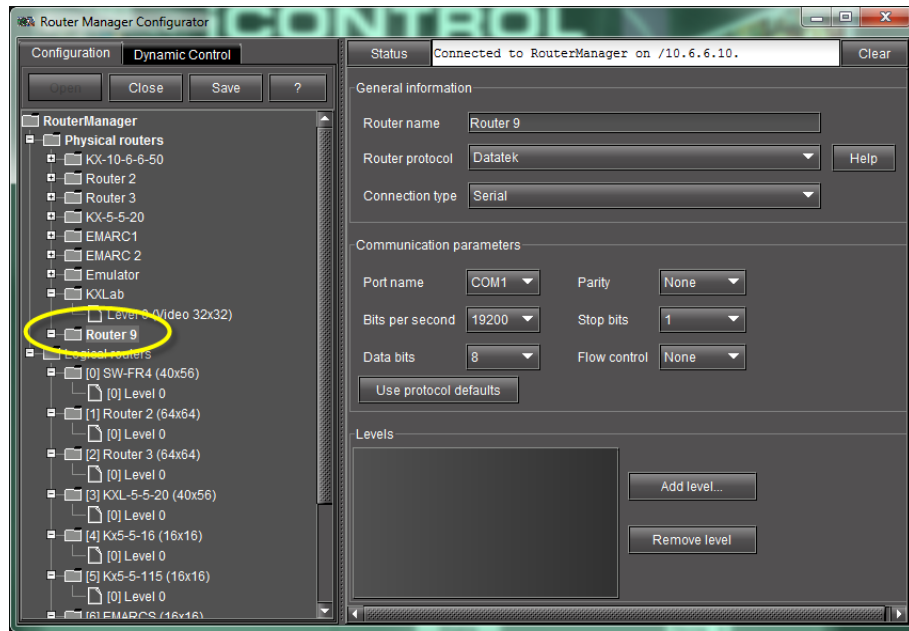
SYSTEM RESPONSE: The list of all physical routers added so far to your system appears in the right pane.



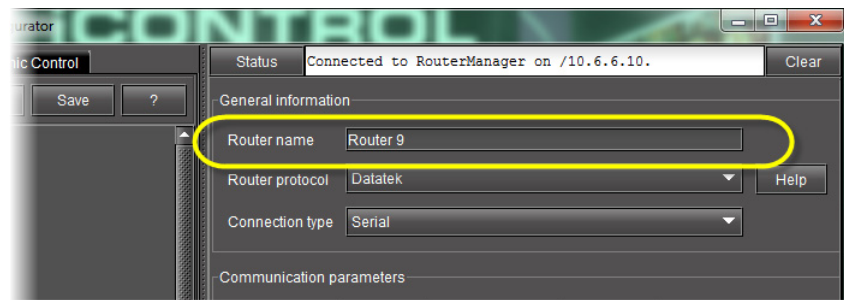
List of physical routers (circled)

3. Click **Add router**.

SYSTEM RESPONSE: A new **Router n** folder appears in the **Physical Routers** folder on the left, with related attributes in the right pane.



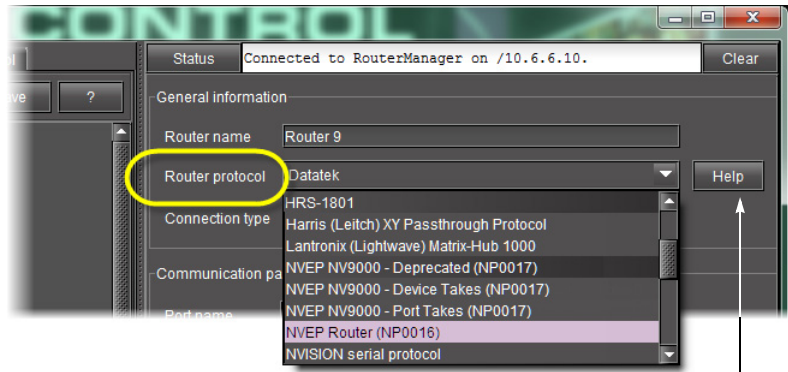
4. Type a name for the router in the **Router name** box.



IMPORTANT: Do not use special characters in the router name.

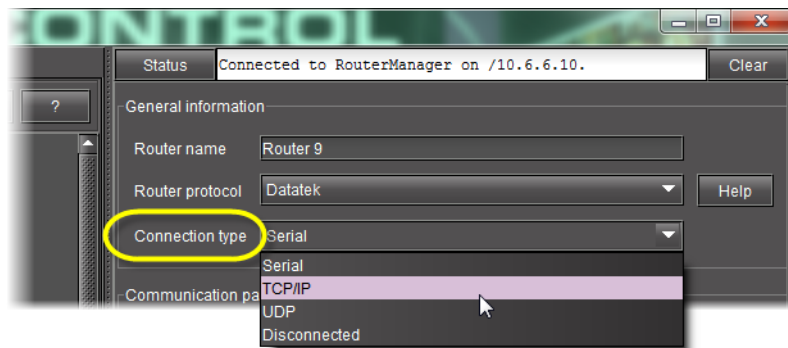
5. Select the appropriate protocol from the **Router protocol** list.

Setting up iControl Router Adding a Physical Router



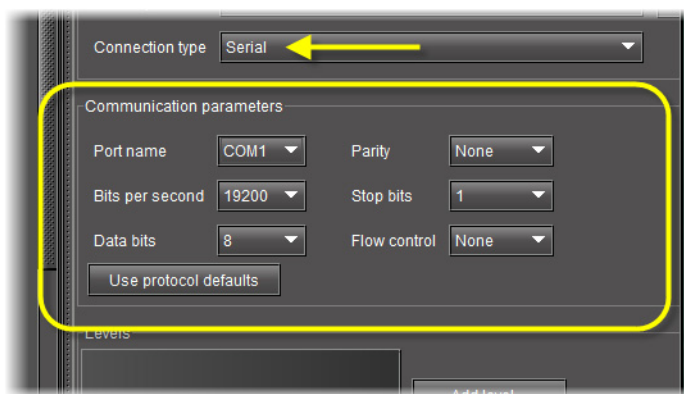
Click **Help** for protocol-specific tips

6. Click **Help** to review information about the selected protocol.
7. Select a connection type.

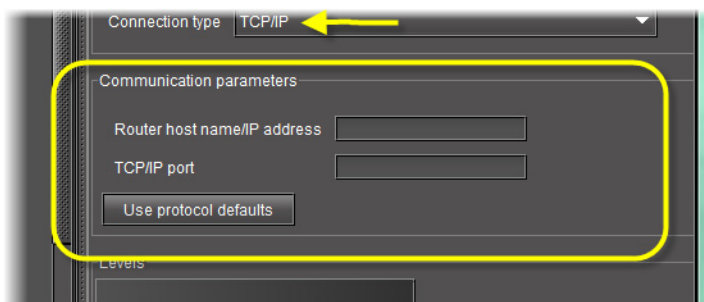


Note: The **Communication parameters** zone varies according to the selected connection type.

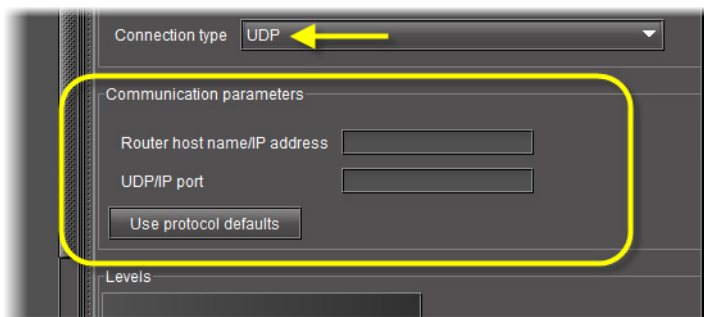
8. Configure communication parameters.
 - Communications settings for a *Serial* connection:



- Communications settings for a TCP/IP connection:



- Communications settings for a UDP connection:



9. Specify all required information, or click **Use protocol defaults** to apply the selected protocol's default communication settings.
10. Click **Save**.

Add Levels to a Physical Router

The physical levels from which the router is going to be built must be defined. Typical levels include video, audio 1, audio 2, etc. These levels each represent a physical device. Each level must be named, and its type and size specified.

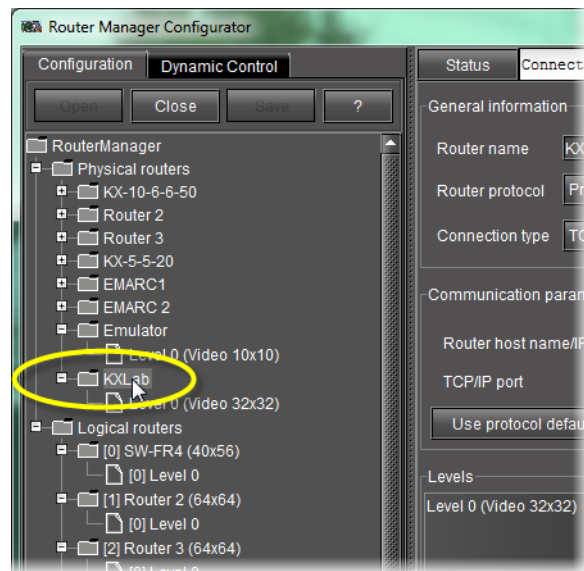
REQUIREMENT

Before beginning this procedure, make sure you have opened Router Manager Configurator (see [page 6](#)).

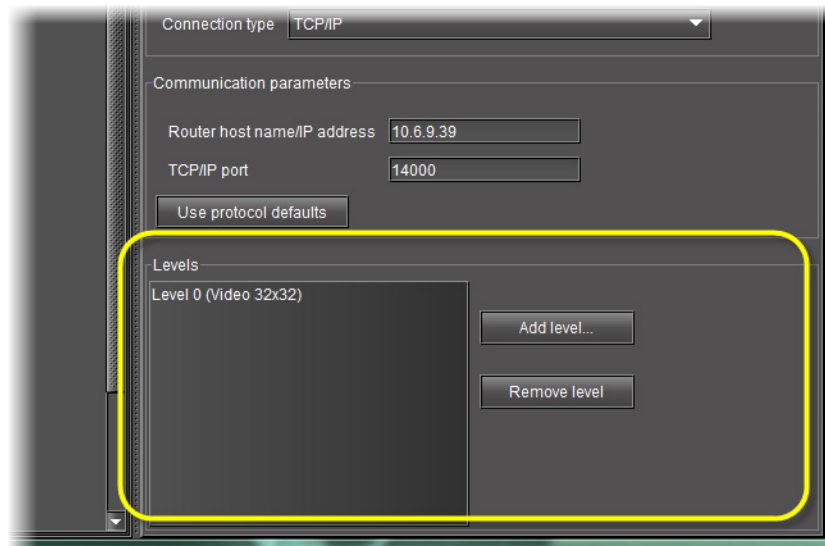
To add a level to a physical router

1. In the left pane, select the physical router you wish to configure.

Setting up iControl Router Add Levels to a Physical Router

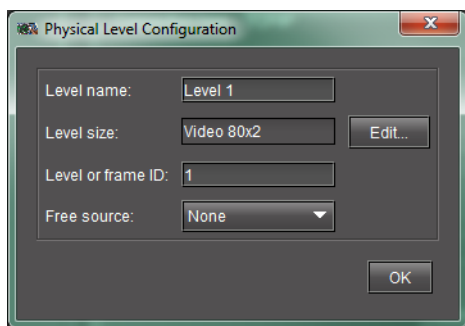


SYSTEM RESPONSE: The list of existing levels appears in the **Levels** area, at the bottom of the right pane.

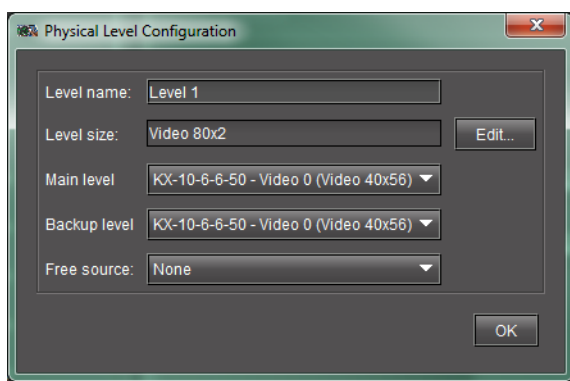


2. Click **Add level**.

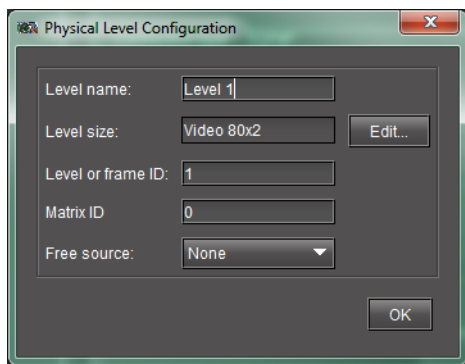
SYSTEM RESPONSE: The **Physical Level Configuration** window appears. Its content varies according to the selected router protocol.



Physical Level Configuration window (most router protocols)



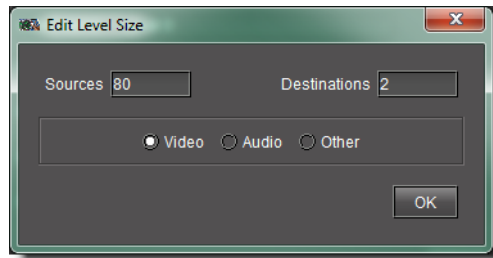
Physical Level Configuration window (Redundancy Control router protocol)



Physical Level Configuration window (Pro-Bel SW-P-08 router protocol)

3. In the **Level name** box, type a name for this level (e.g. Audio).
4. Click **Edit**.

SYSTEM RESPONSE: The **Edit Level Size** window appears.



5. In the **Edit Level Size** window, specify the number of sources and destinations associated with the physical level.
The three option buttons labeled **Video**, **Audio** and **Other** are used for *Network Electronics* routers only, for which levels must be classified as either *Video* or *Audio*. These settings are ignored by routers from other manufacturers.
6. Click **OK**.
7. In the case of a Pro-Bel SW-P-08 device, type the appropriate value in Matrix ID (click **Help** for more information).
8. In the case of a Redundancy Control device, select the appropriate main level and backup level from the lists (click **Help** for more information).
9. Click **OK** to close the **Physical Level Configuration** window.
At this point, you have added a level to a physical router, which appears in the **Levels** list under the **Router Configurations** tab.

Importing an NVISION Physical Router Configuration

IMPORTANT: Risk of Deleting Router Configuration Data

If, after adding aliases in iControl Router, you are importing router configuration data in which there is a physical router with the same name as one of your own in iControl Router, the alias data you configured for that router will be overwritten.

In the case of the Router Manager application, imported NVISION router configuration data is not continuously synchronized with the router. Re-importing this configuration data at a later time will overwrite the locally stored NVISION data with the new data from the router. If some changes were applied locally, in iControl Router, after a previous import, they will be lost.

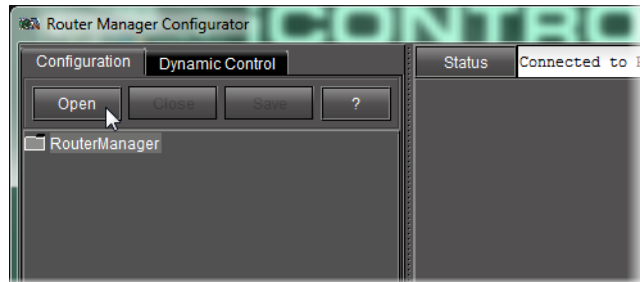
REQUIREMENTS

Make sure you meet the following conditions before beginning this procedure:

- You have the host name or IP address of the NVISION router controller whose configuration you wish to import.
- You have opened Router Manager Configurator (see [page 6](#)).

To import an NVISION configuration

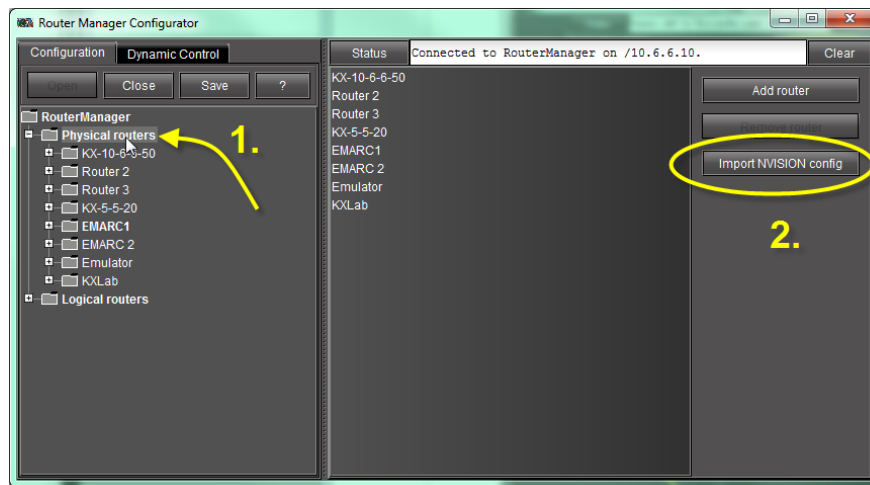
1. Select the router manager folder, and then click **Open**.



2. Select the **Physical Routers** folder.

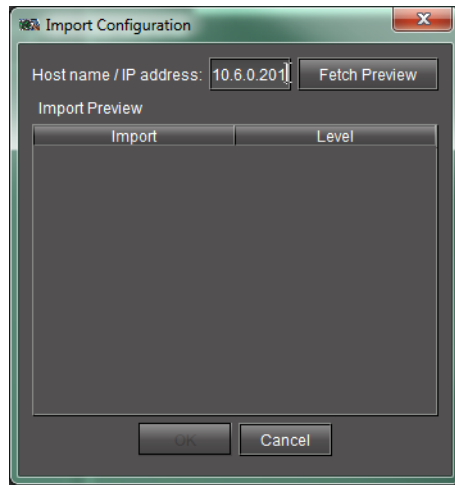
SYSTEM RESPONSE: The list of all physical routers added so far to your system appears in the right pane.

3. Click **Import NVISION config**.



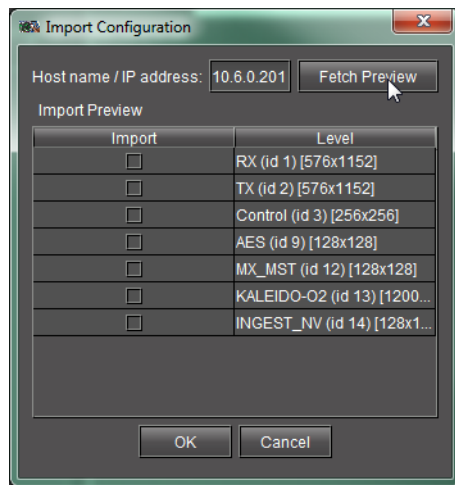
SYSTEM RESPONSE: The **Import Configuration** window appears.

Setting up iControl Router Importing an NVISION Physical Router Configuration

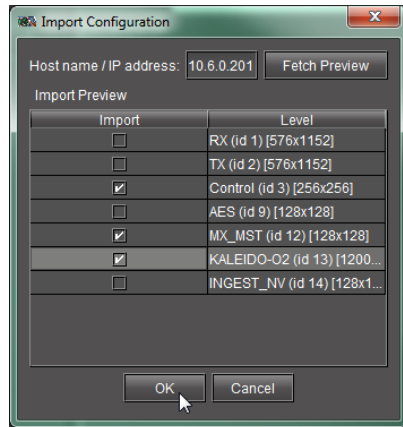


4. In the **Host name / IP address** box, type the host name or IP address of the NVISION router controller whose configuration you would like to import.
5. Click **Fetch preview**.

SYSTEM RESPONSE: The levels of the NVISION router appear listed in the **Import preview** area.

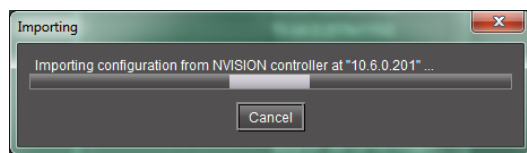


6. Select the levels you would like to import, and then click **OK**.

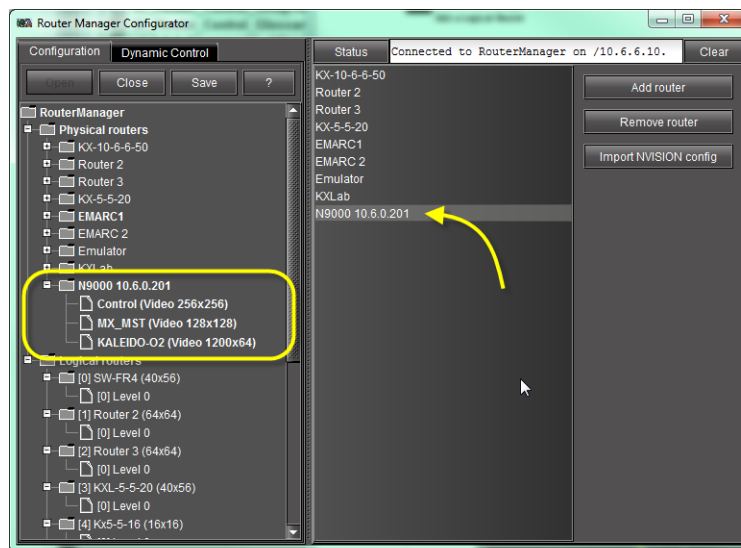


SYSTEM RESPONSES:

- A progress window appears, allowing you to cancel the operation if required.

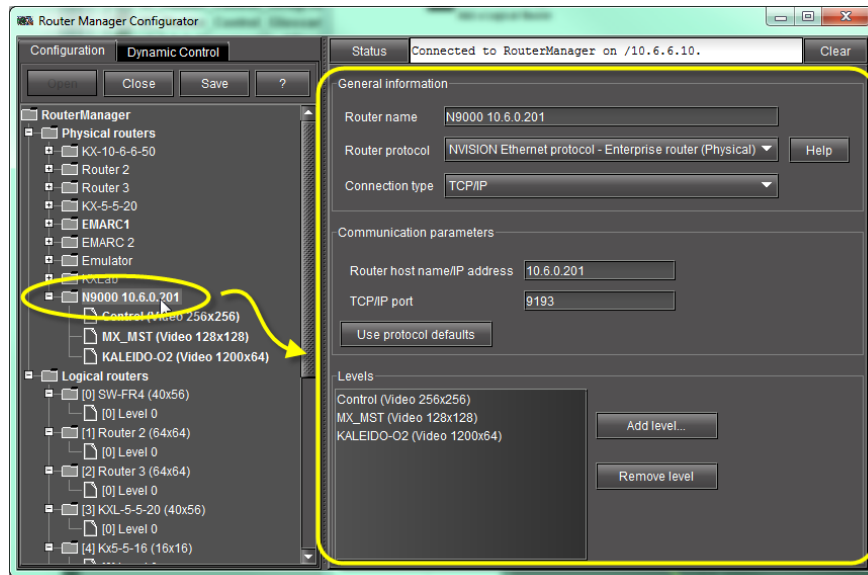


- After the progress window disappears, the NVISION router controller's level configurations are listed among the physical routers in the left and right panes of **Router Manager Configurator**.



Selecting the physical router in the left pane yields general information, communication parameters, and a list of levels imported from the router.

Setting up iControl Router Add Aliases for your Physical Input Ports



Task 6: Add Aliases for your Physical Input Ports

Aliases are names assigned to input and destination ports. Aliases are useful when trying to remember specific ports on different routers or devices, or on different physical levels, that have identical port numbers. For example, input port 1 on Router 1 can be assigned the alias *router1on1* and input port 1 on Router 2 can be assigned the alias *router2on1* so that each port can be easily distinguished.

IMPORTANT: Risk of Deleting Router Configuration Data

If, after adding aliases in iControl Router, you decide you would like to import router configuration data in which there is a physical router with the same name as one of your own in iControl Router, the alias data for that router will be overwritten.

Notes

- If you would like to add aliases, you may either create your own or import them from an NVISION router configuration.
- In iControl Web, you may create alarm consumer plug-ins that are triggered by the alarms of aliases. For more information, see the *iControl User Guide*.

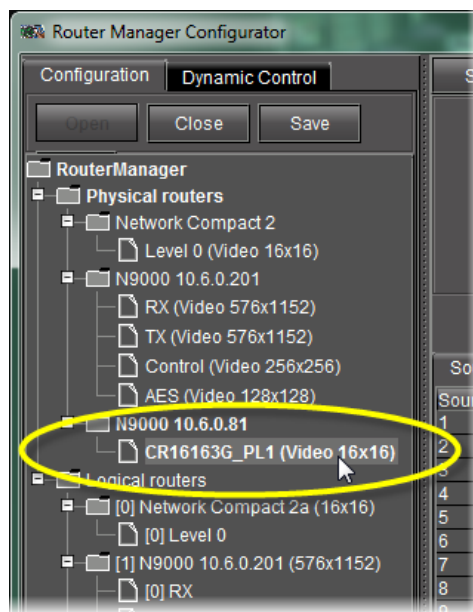
REQUIREMENTS

Make sure you meet the following conditions before beginning this procedure:

- You have opened Router Manager Configurator (see [page 6](#)).
- The physical router and level to which you would like to add an alias is visible in the navigation pane of the Router Manager Configurator.

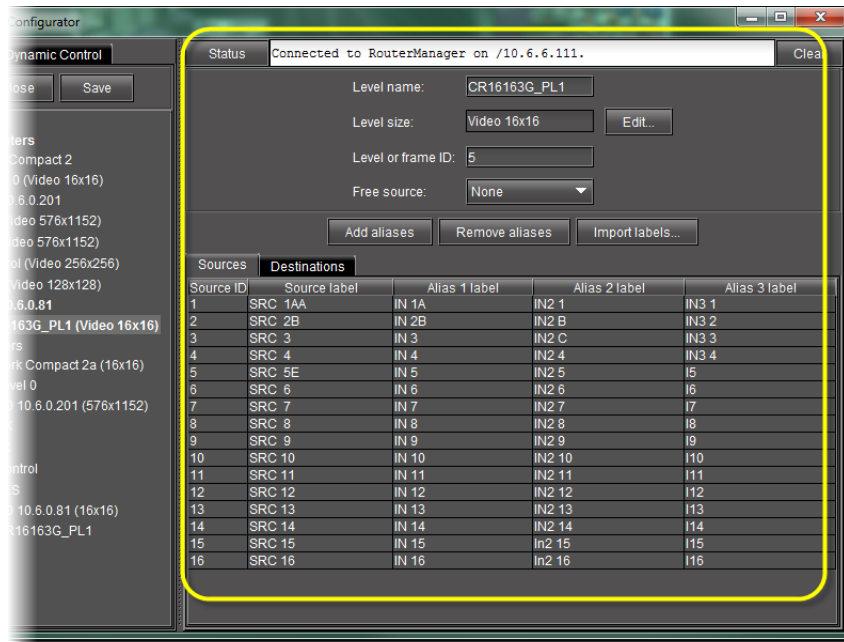
To add an alias for an input or destination port

1. In Router Manager Configurator, in the navigation pane, click the level of the physical router to which you would like to add an alias.

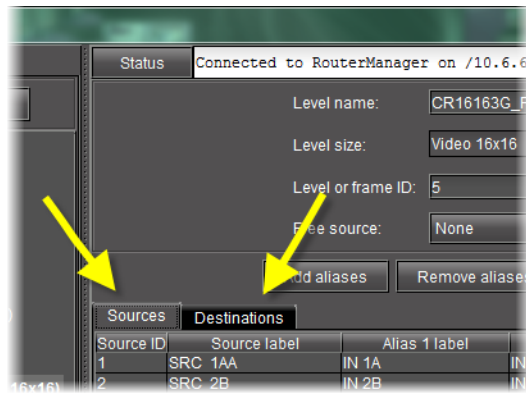


SYSTEM RESPONSE: Information about the selected level appears in the right pane, including labels and aliases for sources and destinations.

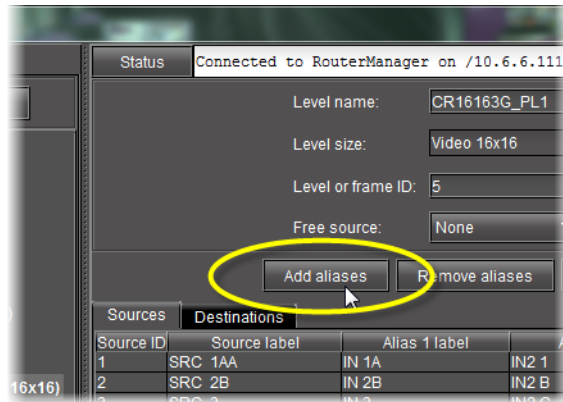
Setting up iControl Router Add Aliases for your Physical Input Ports



2. If you would like to add an alias for an input port, click the **Sources** tab. If you would like to add an alias for a destination port, click the **Destinations** tab.



3. Click **Add aliases**.



SYSTEM RESPONSE: An empty alias column appears to the far-right side of the label area.



Task 7: Add a Logical Router

REQUIREMENT

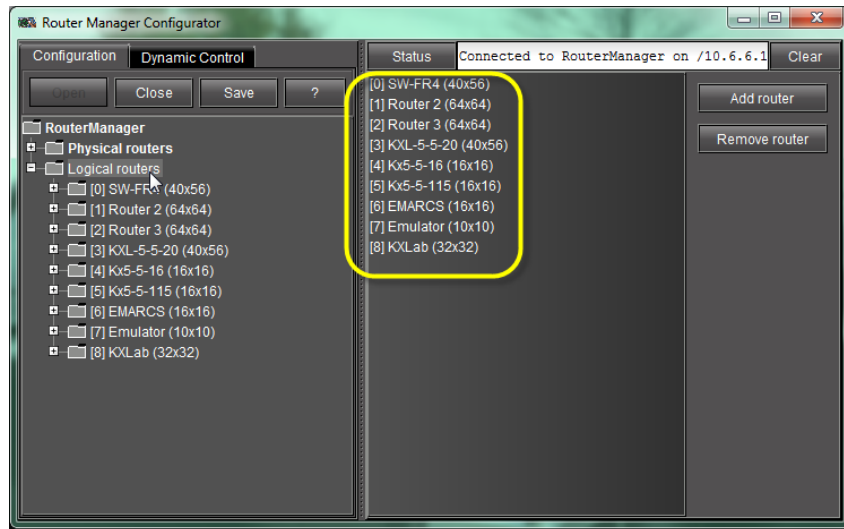
Before beginning this procedure, make sure you have opened Router Manager Configurator (see [page 6](#)).

To add a logical router

1. In the left pane of Router Manager Configurator, select the **Logical Routers** folder.

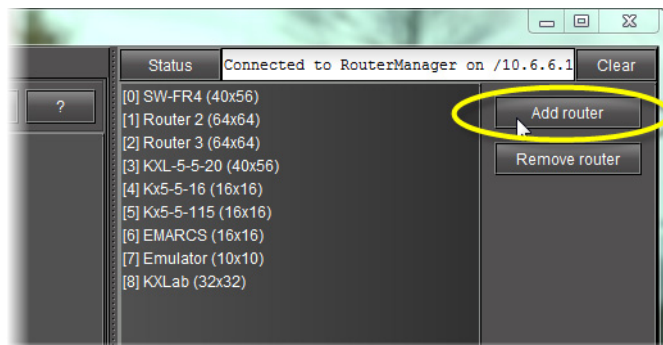
SYSTEM RESPONSE: A list of logical routers appears in the right pane.

Setting up iControl Router Add a Logical Router

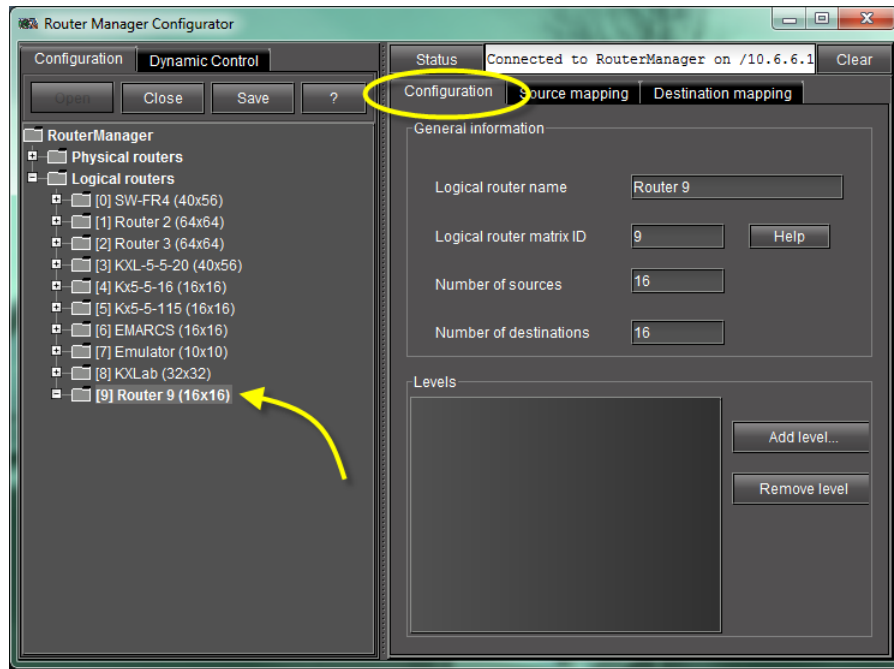


List of logical routers (empty if none are defined)

2. Click **Add Router**.



SYSTEM RESPONSE: A **New Router** folder appears in the **Logical Routers** folder in the left pane. In the right pane, the **Configuration** tab appears.



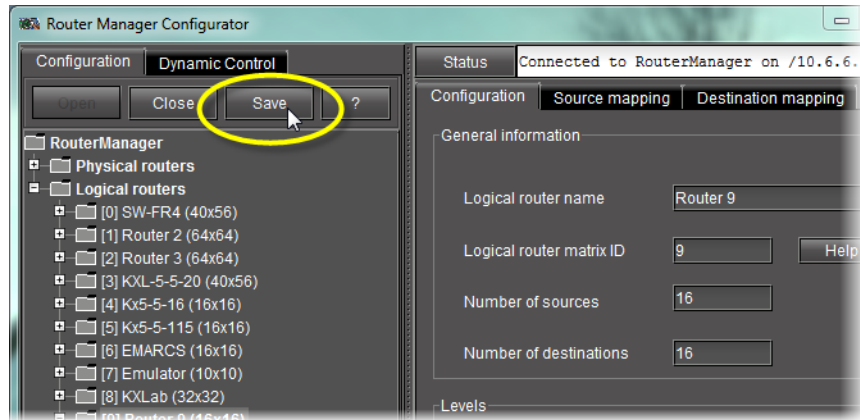
Logical Router Configuration tab

3. In the **General Information** area, complete all the fields:

Field	Action
Logical router name	Type a name for the new logical router. Do not use special characters in the router name. The name of the logical router should be unique within the LAN.
Logical router matrix ID	Type a matrix ID number. Identify which logical router the third-party application will monitor or control.
Number of sources	Type the number of inputs, according to the desired logical router size, not exceeding the number of inputs of the physical router.
Number of destinations	Type the number of outputs, according to the desired logical router size, not exceeding the number of outputs of the physical router.

4. Click **Save**.

Setting up iControl Router Add Levels to a Logical Router



5. Repeat to add more logical routers.

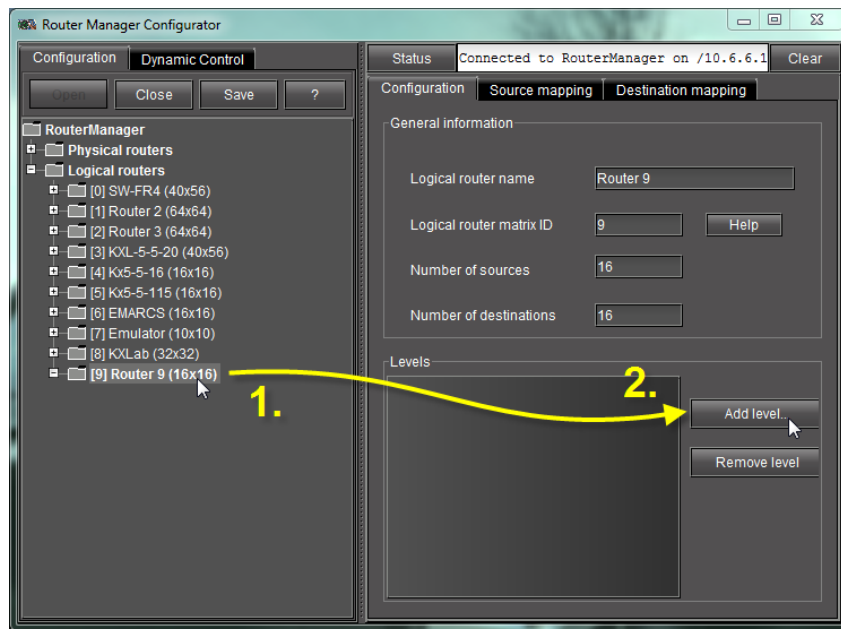
Task 8: Add Levels to a Logical Router

REQUIREMENT

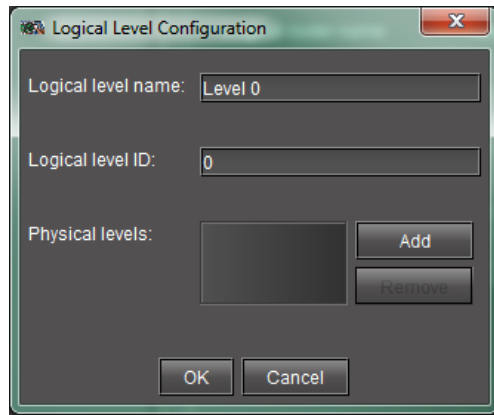
Before beginning this procedure, make sure you have opened Router Manager Configurator (see [page 6](#)).

To add levels to a logical router

1. In the left pane of the **Router Configurator**, select the newly added logical router.
2. In the **Configuration** tab, click **Add level**.



SYSTEM RESPONSE: The **Logical Level Configuration** window appears.

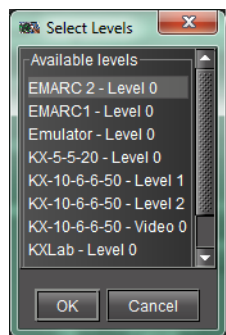


3. Complete the following fields:

Field	Action
Logical level name	Type a name for the logical level.
Logical level ID	Type an ID for the logical level. The logical level ID is the internal identifier of the logical level and should be unique within a logical router.

4. Next to the **Physical levels** box, click **Add**.

SYSTEM RESPONSE: The **Select Levels** window appears.



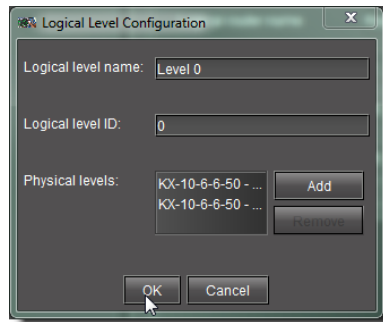
5. Select one or more of the displayed physical levels, and then click **OK**.

SYSTEM RESPONSES:

- The **Select Levels** window closes.
- In the **Logical Level Configuration** window, the levels you selected appear in the **Physical levels** box.

Setting up iControl Router

Add a Mapping to a Logical Router



6. Click **OK**.
7. Repeat to add more levels.
There can be a maximum of eight levels.

Task 9: Add a Mapping to a Logical Router

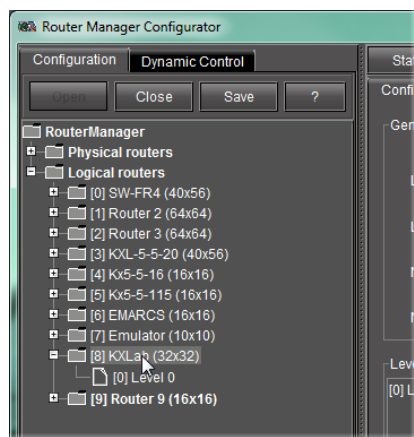
The final stage of the set-up process is the source and destination mapping. *Mapping* is the term used to refer to the creation of associations between physical and logical router levels. iControl's GSM Router plug-in uses Logical Source labels when interacting with the iControl Router system.

REQUIREMENT

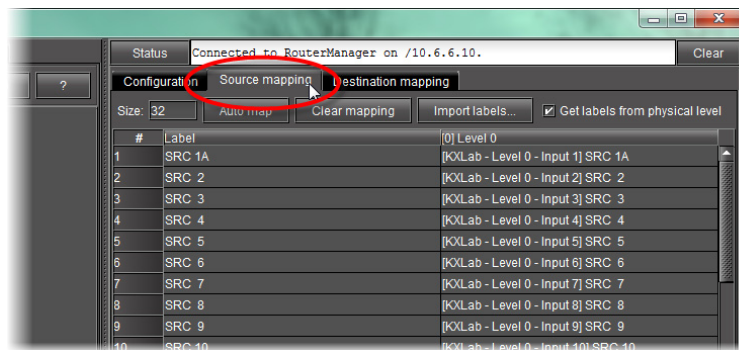
Before beginning this procedure, make sure you have opened Router Manager Configurator (see [page 6](#)).

To add a mapping (assign crosspoints) to a logical router

1. In the left pane, select the newly added logical router.

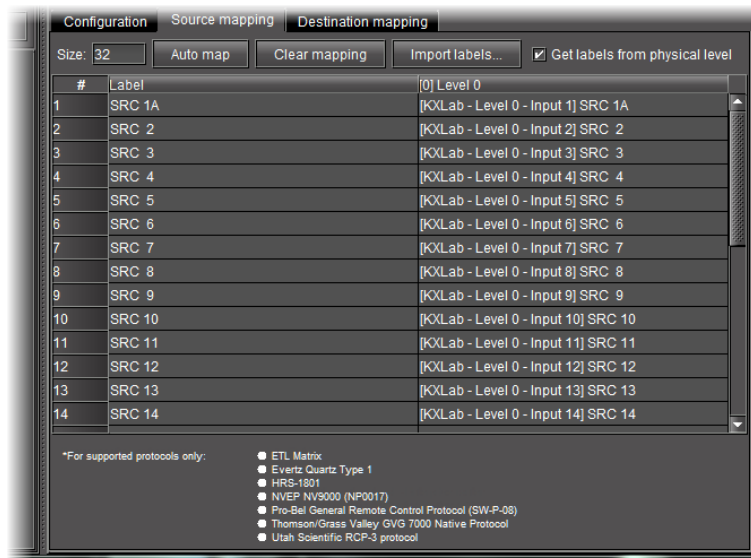


2. In the right pane, click on the **Source mappings** tab.



SYSTEM RESPONSES:

- The source mapping table is displayed. The number of rows matches the logical router size that was specified when the logical router was created. The physical devices which serve each level are shown across the top, and the matrix shows which physical input is assigned to each logical input.
- The logical source ID appears in the first column (#), showing a list of sources for the virtual router. The second column (**Label**) contains the router labels to be used for the mapping. The third column (**Video**) contains the Physical Source ID that will be mapped to each logical source.
- An auto-map function is available, which will generate a suggested mapping based on the information available. The results can be manually adjusted if necessary.



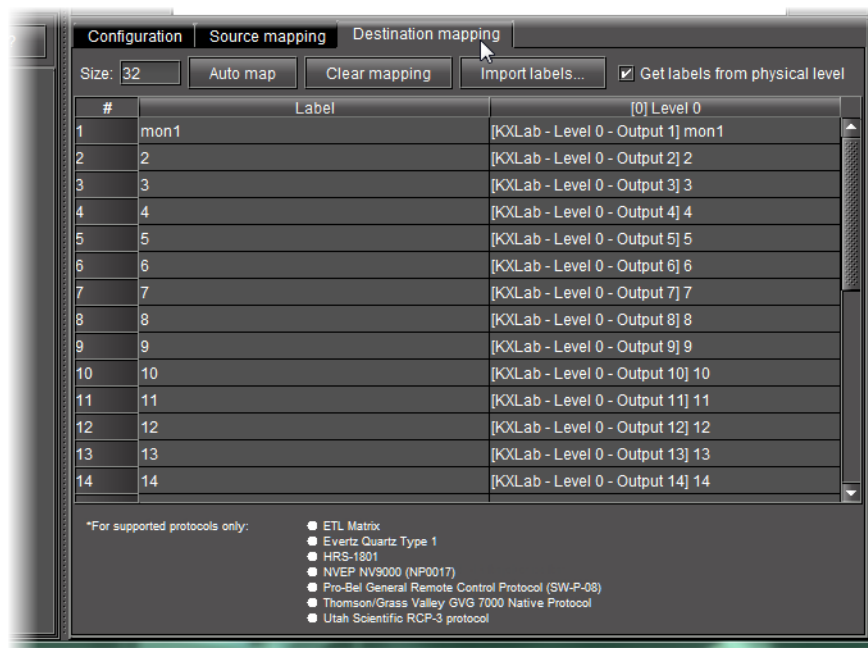
Source mapping tab (notice automatic labels are pre-defined on the left side)

3. There are three ways to complete the source mapping:
 - Click **Auto map** to automatically complete the **Physical Source ID** columns.

- Complete the table manually.
 - If the Logical Source labels are located in a CSV file, click **Import labels** to import the label information.
4. In the right pane, click the **Destination mapping** tab.

SYSTEM RESPONSES:

- The destination mapping table is displayed. The number of rows matches the logical router size that was specified when the logical router was created. The physical devices which serve each level are shown across the top, and the matrix shows which physical output is assigned to each logical output.
- The Logical Destination ID appears in the first column (**#**). The second column (**Label**) contains the router labels to be used for the mapping. The third column (**Video**) contains the Physical Destination ID that will be mapped to each logical destination.
- As with source mapping, an auto-map function is available, which will generate a suggested mapping based on the information available. The results can be manually adjusted if necessary.



Destination Mappings tab

5. There are three ways to complete the destination mapping:
- Click **Auto map** to automatically complete the **Physical Destination ID** columns.
 - Complete the table manually.
 - If the logical destination labels are located in a CSV file, click **Import labels** to import the label information.
6. Click **Save**.

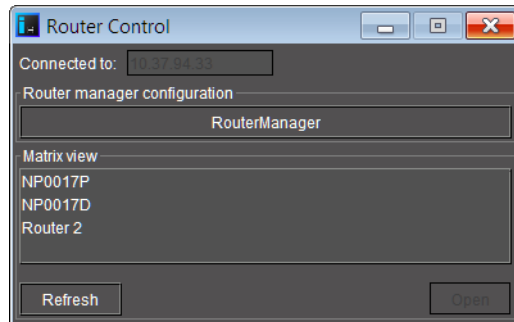
Task 10: View the Newly Configured Router

There are two views available to monitor and control logical routers. These operating interfaces are called *Matrix View* and *Single Bus*.

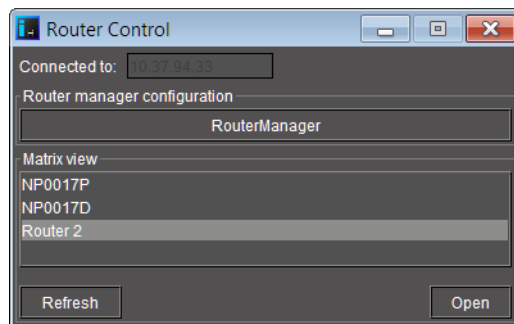
To view and operate the newly created logical router

1. Return to the iControl Router window (you can minimize or close the **Router Manager Configurator** window), and then click **Refresh**.

SYSTEM RESPONSE: The router you just configured should appear in the list of available routers, under **Matrix view**.



2. Select the new router, and then click **Open**.

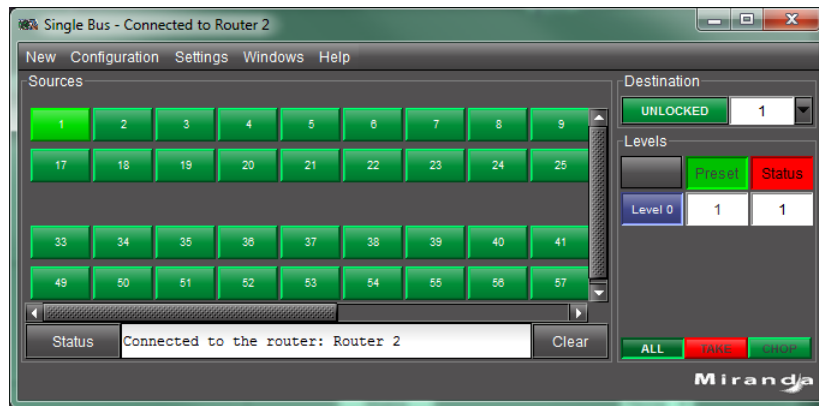


SYSTEM RESPONSE: The **Matrix View** window appears.



This view is a visual representation of the status for the entire logical router. It displays the complete router status, and allows the configuration of crosspoints to be changed during operation. Three panes at the bottom of the window enable crosspoint operation, in different modes.

3. If you wish to open the Single Bus view: on the **New** menu, click **Single bus**.
SYSTEM RESPONSE: The **Single Bus** window appears.



This view enables control of one or more router destinations at the same time. It allows isolated control of one output at a time. Sources appear on the left as a set of buttons, and the destination is on the right.

Further Reading

To learn more about the configuration and operation of routers, please refer to the *iControl User Guide*, available by clicking the **Documentation** link on the iControl Startup page.

Glossary

Term	Definition
iControl Router Manager	<p>iControl Router Manager is software that allows large routers to be operated as if they were multiple smaller routers. For example, a 64 × 64 router can be operated as if it were a 64 × 15, router, a 12 × 5 router and a 32 × 44 router. Multiple routers can be linked together to create larger configurations. Control and monitoring are handled by software, and are readily changed. The operator benefits by seeing only the resources actually being used.</p> <p>iControl Router Manager is distributed and highly configurable, enables unlimited router size and unlimited levels, supports logical routers, and mixes and matches different frame types and manufacturers.</p>
Label	<p>Router labels provide a unique name by which to identify different segments of a router. There are four types of router labels: physical source labels, physical destination labels, logical source labels, and logical destination labels. Only the logical source labels display on iControl Web pages and as Under Monitor Displays (UMD). The latter names specific logical router input.</p>
Level	<p>There can be up to eight independently assigned and controlled router levels (audio and video).</p>
Logical Router	<p>Logical router refers to the intangible router that is not physically part of the iControl Router system but virtually exists as part of the iControl Router system. The logical router is used in the iControl Router system to logically represent a complete physical router or a segment (subset) of a physical router. More than one logical router can be mapped for a single physical router. The sizes do not need to match, although the logical router must be less than or equal to the size of the associated physical router.</p>
Matrix View	<p>This is the view that appears when Matrix is selected from the monitor view page. This view is a visual representation of the status for the entire logical router. It displays complete router status. This view allows the configuration of crosspoints to be changed during operation extended functionality. There are three windows at the bottom of the matrix view — Levels, Salvo, and Presets — that enable crosspoint operation in different modes.</p>
Monitor View	<p>This is the view that appears immediately after launching iControl Router Manager — a video monitor and a source selector. This view enables the user to monitor any router destination and to see exactly what is being sent to a specific destination.</p>
Operating Interface	<p>Router Control Operating interfaces are used for in-service monitoring and control. There are three distinct views in the Router operating interface: monitor, matrix and single bus.</p>
Physical Router	<p>Physical router refers to the tangible router that is physically part of the iControl Router system.</p>
Salvo	<p>A salvo is a default definition for assigning router crosspoints. Individual levels can be specified at each crosspoint or the entire group can be specified. This is important when returning to original mappings. Router Control permits unlimited salvos assignments.</p>
Single Bus View	<p>This is the view that appears when Single bus is selected from the monitor view page. This view enables control of one or more router destinations at the same time. It allows isolated control of one output at a time.</p>



Grass Valley Technical Support

For technical assistance, contact our international support center, at 1-800-547-8949 (US and Canada) or +1 530 478 4148.

To obtain a local phone number for the support center nearest you, please consult the *Contact Us* section of Grass Valley's website (www.grassvalley.com).

An online form for e-mail contact is also available from the website.

Corporate Head Office

Grass Valley
3499 Douglas-B.-Floreani, St-Laurent, Québec H4S 2C6, Canada
Telephone: +1 514 333 1772
Fax: +1 514 333 9828
Web: www.grassvalley.com