



grass valley

A **BELDEN** BRAND

# IGNITE

LIVE PRODUCTION CONTROL SYSTEM

Release Notes

Software Version 7.7

071879407  
JANUARY 2016

—

# CERTIFICATE

Certificate Number: 510040.001

The Quality System of:

## Grass Valley, A Belden Brand and its Grass Valley Affiliates

|  |  |
|--|--|
| <b>Headquarters:</b><br>3499 Douglas-B Floreani<br>St. Laurent, Quebec H4S 2C6<br>Canada | 3030 NW Aloclek Drive<br>Hillsboro, OR 97124<br>United States    |
| Street Bergschot 69<br>4817 PA Breda<br>The Netherlands                                  | 125 Crown Point Court<br>Grass Valley, CA 95945<br>United States |

Including its implementation, meets the requirements of the standard:

## ISO 9001:2008

Scope:

St. Laurent HQ: The design, manufacture and support of video and audio products and systems.

Grass Valley and Hillsboro: Design, outsource manufacture and support.

Breda: Design, manufacture, including outsource manufacture, and support.

This Certificate is valid until: June 14, 2018  
This Certificate is valid as of: June 14, 2015  
Certified for the first time: June 14, 2000

Dr. Cem O. Onus  
Managing Director, Business Assurance  
DEKRA Certification, Inc.

The method of operation for quality certification is defined in the DEKRA Master Services Agreement. Integral publication of this certificate is allowed.

**DEKRA Certification, Inc.**  
1120 Welsh Road, Suite 210  
North Wales, PA 19454  
USA  
Ph: (215)997-4519  
Fax: (215)997-3810  
ISO 9001 Cert 03/09/2015 Rev C

**Accredited By:**  
ANAB







grass valley

A **BELDEN** BRAND

# IGNITE

LIVE PRODUCTION CONTROL SYSTEM

Release Notes

Software Version 7.7

071879407  
JANUARY 2016



## Copyright and Trademark Notice

Copyright © Grass Valley USA, LLC. All rights reserved.

Belden, Belden Sending All the Right Signals, and the Belden logo are trademarks or registered trademarks of Belden, Inc. or its affiliated companies in the United States and other jurisdictions. Grass Valley is a trademark or registered trademark of Grass Valley USA, LLC. Belden, Inc., Grass Valley USA, LLC, and other parties may also have trademark rights in other terms used herein.

## Grass Valley Web Site

The Grass Valley Web (<http://www.grassvalley.com/support>) site offers the following:

**Online User Documentation** — Current versions of product catalogs, brochures, data sheets, ordering guides, planning guides, manuals, and release notes in .pdf format can be downloaded.

**FAQ Database** — Solutions to problems and troubleshooting efforts can be found by searching our Frequently Asked Questions (FAQ) database.

**Software Downloads** — Download software updates, drivers, and patches.

## Grass Valley Technical Support

For technical assistance, contact our international support center, at 1-800-547-8949 (US and Canada) or +1 530 478 4148.

To obtain a local phone number for the support center nearest you, please consult the Contact Us section of Grass Valley's web site.

An online form for e-mail contact is also available from the web site.

## Recycling

Visit [www.grassvalley.com](http://www.grassvalley.com) for recycling information.





# Contents

|   |    |
|---|----|
| <b>Ignite Release Notes</b> .....                                       | 11 |
| Introduction .....  | 11 |
| Release Summary .....   | 11 |
| New Functionality .....   | 11 |
| Enhanced Functionality .....  | 12 |
| Enhanced Support for Katalyst Fader Touch .....                         | 12 |
| Enhanced Support for Tally Controller .....                             | 12 |
| K-Frame S-Series Now an Option In the Ignite Configuration Screen ..... | 12 |
| K-Frame S-Series Enhancements .....                                     | 12 |
| Enhanced Support for Lawo Audio .....                                   | 13 |
| Enhanced Support for Chyron CG .....                                    | 13 |
| Installer Enhancements .....  | 13 |
| GPI Delay .....   | 14 |
| Enhanced Performance of the IQ Template .....                           | 14 |
| Compatibility .....   | 14 |
| Hardware .....  | 14 |
| Software .....  | 14 |
| Limitations or Restrictions .....                                       | 15 |
| Installation and Configuration .....                                    | 16 |
| Considerations .....  | 16 |
| Hardware Installation .....   | 16 |
| Software Installation .....   | 16 |
| New Installation .....  | 16 |
| Upgrade Installation .....  | 17 |
| Configuration Notes .....   | 18 |



# *Ignite Release Notes*

## **Introduction**

This document describes compatibility, installation, and other information specific to the Ignite Release 7.7 for the Ignite Live Production Control System.

**Note** For a current list of supported/controlled devices, contact an authorized Grass Valley reseller or contact Grass Valley sales directly.

## **Release Summary**

This release provides new functionalities of Ignite Automated Production system, Ignite Konnect, and Ignite Katalyst.

It also includes enhanced support for K-Frame S-Series switchers, Lawo audio, and Chyron CG.

## **New Functionality**

Items included with this release:

- Support for K-Frame version 9.0 switchers.
- Enhanced support for Katalyst Fader Touch.
- Tally Controller support for Kayenne, Karrera, and K-Frame S-Series switchers.
- Enhanced support for Lawo Audio.
- Enhanced support for Chyron CG.
- Katalyst installer now supports backup and restore functionalities.
- Configurable Delay value for GPI Trigger 16.
- Improvement of the IQ Template performance.

## Enhanced Functionality

Ignite 7.7 new features include:

### Enhanced Support for Katalyst Fader Touch

Ignite now displays a purple border on the Audio GUI with the implementation of touch sensor feedback on the Katalyst Fader. Ignite automation commands are put on hold when the Katalyst Fader is touched. However, Ignite automation commands resume when the touch is removed.

### Enhanced Support for Tally Controller

The Tally Controller now supports Kayenne, Karrera, and K-Frame S-Series switchers. Tally Controller is used to create tally logic and configure Tally Expander, which consists of 32 GPI connections, and 64 GPO relays. Those relays are used for external device control operated through tally logic parameters and commands on the Ignite event timeline.

Ignite now supports the program of tally logic for a particular Keyer, Internal Digital Picture Manipulator (iDPM), 2D iDPM, on an M/E, AUX buses, and internal/external sources of switchers. When a specific relay is mapped to a source, and the condition triggered, a tally is then relayed to the specific destination.

### K-Frame S-Series Now an Option In the Ignite Configuration Screen

K-Frame S-Series can now be selected from the Ignite Device Configuration screen.

### K-Frame S-Series Enhancements

When connected to the K-Frame S-Series switchers, Ignite now displays four backgrounds on the main screen: TME Property, Master Routing Page, Split ME Table, and the IQ Template manager.

## Enhanced Support for Lawo Audio

The Lawo Audio user interface now supports:

- The “Take to Air Now” and “Remove from Preview” options. These options are available previously in the Audio Prep mode only.
- Individual fader to be hidden from the Live pane.
- The character limit for Profile Name of the Lawo audio show has been increased but limited to 20 characters.
- Loading of Lawo snapshot without disconnecting from Lawo Audio control.
- Change of Device Manager Snapshot text box to combo box so snapshot names can easily be selected in a drop-down.
- Lawo snapshot can be added to the show profile. So once a profile is selected, the snapshot is also automatically reloaded.
- Lawo snapshots can be changed on the Ignite TME property page.
- Ability to control Surround Master Faders in Ignite.
- Real audio channel names can now be used in the Prep mode.
- A new utility tool to insert snapshot names into LawoSnapShot file for the Ignite TME property page.
- Ability to change a snapshot configuration in the IQ Template.

## Enhanced Support for Chyron CG

The Chyron CG now supports:

- Erase command on the Ignite user interface.
- New Play command from Chyron CG.
- Pause release command on the Ignite user interface.
- Sending or Build Macro command from Ignite.
- Sending of a full message path to the Lyric software.
- Configuration of root folder in the device configuration page due to latest CG path change in CAMIO4. For more details, refer to [CONFIGURATION NOTE 6 on page 19](#).

## Installer Enhancements

The Katalyst and Ignite installers are now separate, and the Katalyst installer includes backup and restore functionalities.

## GPI Delay

A delay field can now be configured for GPI Trigger 16 in the TME property page. The range of delay can be set between 0ms to 5000ms.

## Enhanced Performance of the IQ Template

Improvement in the speed to process Ignite IQ Templates.

## Compatibility

### Hardware

This release is compatible with previous Ignite system hardware version 7.0 and above.

### Software

This Ignite Release 7.7 only functions with the Media Object Portal (MOP) and does not support the XMOS server in previous systems. If a customer is being upgraded from any version of Ignite prior to:

- 5.2.0.0, you must run the AlloyConversionUtilities found in the Ignite installation folder
- 5.1.1, you must convert the customer's TME & Macro library with the the IgniteTMEProcessor found in the Ignite installation folder

Refer to the release matrix in [Table 1](#)

Table 1. Release Matrix

| Application             | Version    | Application              | Version          |
|-------------------------|------------|--------------------------|------------------|
| ENPS Server             | 7.46.7147  | Yamaha Audio             | 1.35             |
| ENPS Client             | 7.46.7147  | Lawo Audio               | 5.0.2.0PL3       |
| iNEWS Server            | 5.2.0.27   | Klotz Audio              | 1.3.5.006        |
| iNEWS Client            | 5.2.0.21   | SSL Audio                | 5.0/5            |
| iNEWS MOS               | 2.8.2      | Enco Audio Server        | 9.2.2.265        |
| Katalyst                | 2.1.4      | Chyron (Duet and HyperX) | 8.0 (build 1558) |
| Kayenne Frame Firmware  | 4.2.2d01   | Miranda Vertigo/Xplay    | 4.9.540.0        |
| K-Frame Firmware        | 9.0.0.5700 | VizRT                    | 2.12.19413       |
| K-Frame Deployment Tool | 9.0.0.5700 | Vadis                    | 1.35.006         |
| K-Frame Menu            | 9.0.0.5700 | Media Control            | 1.5.9.1          |

Table 1. Release Matrix

| Application               | Version        | Application                             | Version                        |
|---------------------------|----------------|---|--------------------------------|
| QUICBox Audio Firmware    | 1.19<br>1.11** | MOP                                     | 1.0.23                         |
| QUICBox Clip24 Firmware   | 1.09<br>1.07** | Aurora Playout / Assignment List Plugin | 7.0.0.33                       |
| QUICBox Hardware Revision | 1.11<br>1.21   | Control Firmware                        | NSLINK-7.14<br>Bootloader-3.15 |
| Klotz 888 Firmware        | 4.0.16         | PortVision Plus                         | 4.0.3                          |
| Klotz 880 Firmware        | 2.17.6         | Microsoft .NET Framework                | 4.5                            |
| Klotz Audio Configurator  | 6.0.0.2        | K2 Summit                               | 9.4.2.2193                     |
| Elemental                 | 2.3.1.22369    | GV STRATUS                              | 4.0.1                          |

## Limitations or Restrictions

- On a virtual machine, faders in the Lawo audio and Katalyst can be jittery when moving those faders up and down. The problem does not exist with faders on a physical machine.
- Fader stereo state for Lawo audio may not be updated after loading a snapshot.
- Dual Streaming (2 M/E linked) operation problem exists between Ignite and K-Frame switchers. The problem does not exist with Kayak and Kayenne switchers.
- Audio module defect in the IQ Template Creator may cause Audio Tables to be mismatched after migration of the IQ Template file. The limitation is restricted to IQ Template files created with Ignite 7.6 and 7.7 software. Please contact Grass Valley to get the “AudioTaskMismatchCorrectionTool” if you encounter the problem.

# Installation and Configuration

## Considerations

- Ignite 7.7 is not an update, but a full installation.
- Ignite 7.7 requires Microsoft .NET 4.5.
- ScriptViewer is no longer sold with Ignite, but for upgrading customers, a corresponding ScriptViewer is available.
- When installing v7.7 Ignite on a system running v6.1.2 with a stand-alone Katalyst, it is best practice to first uninstall both Ignite v6.1.2 and the standalone Ignite Katalyst before proceeding with the v7.7 install.
- With v7.7, desktop experience must be enabled otherwise graphics might be compromised.

## Hardware Installation

Only qualified Grass Valley Service Engineers are authorized to install Ignite Live Production Control System Release 7.7 software. Contact your local Grass Valley representative, your Grass Valley Ignite Technical Service representative, or Grass Valley Support Center.

## Software Installation

Only qualified Grass Valley Service Engineers are authorized to install Ignite Live Production Control System Release 7.7 software. Contact your local Grass Valley representative, your Grass Valley Ignite Technical Service representative, or Grass Valley Support Center.

Installation has two parts:

- MOP server
- Ignite

## New Installation

1. Run the IgniteMOPInstaller.msi for 1.0.23 on the MOP server.
2. Run the Ignite 7.7.0 Installer.exe on the Ignite workstation.
3. Select the feature set from installer options (Audio, Switcher Type, etc.) and finish the installation.



## Upgrade Installation

### MOP Server Upgrade

**CAUTION** It is imperative that you follow these instructions when UPGRADING to MOP Server 1.0.23 from a previous version.

**Note** This update requires more than just new software, but also has a database update component.

1. Manually uninstall MOP Server via Windows add/remove programs.
2. Run IgniteMOPInstaller.msi for 1.0.23 on the MOP server.
3. Launch the Ignite MOP Utility:
  - **Services > Start Services**
  - **Settings > Configure Database**
4. Be sure that the Database Version is less than 5.

**Note** In the following step, the application might freeze for a few seconds, this is normal.

5. Under **Upgrade**, click **Upgrade Database**. When done, the:
  - Messages window displays **Upgrade complete**
  - Database Version displays **5**

### Ignite Upgrade

**Note** If customer is being upgraded, and is using different audio, or a different switcher (i.e. going from Klotz to Calrec, or Kayak to Kayenne), after restoring setups, you will need to restore some registry settings manually. Refer to [http://grassvalleyautomation.com/wiki/index.php?title=Ignite\\_Restore](http://grassvalleyautomation.com/wiki/index.php?title=Ignite_Restore) for more information.

If a customer is upgrading from any version of Ignite prior to:

- 5.2.0.0, you must run the AlloyConversionUtilities found in the Ignite installation folder
  - 5.1.1, you must convert the customer's TME & Macro library with the the IgniteTMEProcessor found in the Ignite installation folder
1. Backup the GrassValley folder and the TBMS registry.
  2. Copy the Ignite\_7.7.0\_FullInstall folder to the C:\Software directory.
  3. Run the Ignite 7.7.0 Installer.exe to uninstall previous version and backup configs.

4. Take note of the name of the folder created in the D:\IgniteBackups folder.
5. Run the Ignite 7.7.0 Installer.exe on the Ignite workstation.
6. Select feature set from installer options (Audio, Switcher Type, etc.) and finish installation.

## Configuration Notes

### CONFIGURATION NOTE 1

**Note** Always perform a backup of the entire TME library before running a conversion via IgniteTMEProcessor.

If the customer is being upgraded and has any TMEs that addressed the ScriptViewer to append scripts and/or load CGs from the CG list, the TMEs must be converted.

In most cases, this is just a single TME (LP.tmx, LS.tmx, or something similar) that is embedded but if the customer uses multiple versions of this file type, all must be converted. Conversion is done via the IgniteTMEProcessor.exe in the root Ignite folder.

### CONFIGURATION NOTE 2

- If the customer is being upgraded and is not using ScriptViewer, or for any reason would prefer to not see the Miniviewer in the Ignite GUI, this must be modified in the registry.

```
HKEY_LOCAL_MACHINE\SOFTWARE\TBMS\IPS\SCRIPT-  
GUI\MINIVIEWMODE  
0 = No Miniviewer1 = Miniviewer
```

- If the customer is not using ScriptViewer, it is recommended that the SV row in the timeline track be removed and replaced with another track (e.g. CG, Kayak, Camera)
- If the customer is not using ScriptViewer, in order to fill the space vacated by the Miniviewer module, it is recommended that the CG List GUI be changed to **Wide** mode from the Display Settings tab of the CG List Settings dialog box.

### CONFIGURATION NOTE 3

For customers with Konnect, a license must be generated using the new PVLICENSEGENERATOR.exe v6.0.0.2. This module should also be used for generating licenses for new Kayak customers.

## CONFIGURATION NOTE 4

Beginning with Ignite 6.0.0.1 release, Audio Configurators have been given their own independent installers, and will drop in the MiscApps subfolder of the Ignite installation folder.

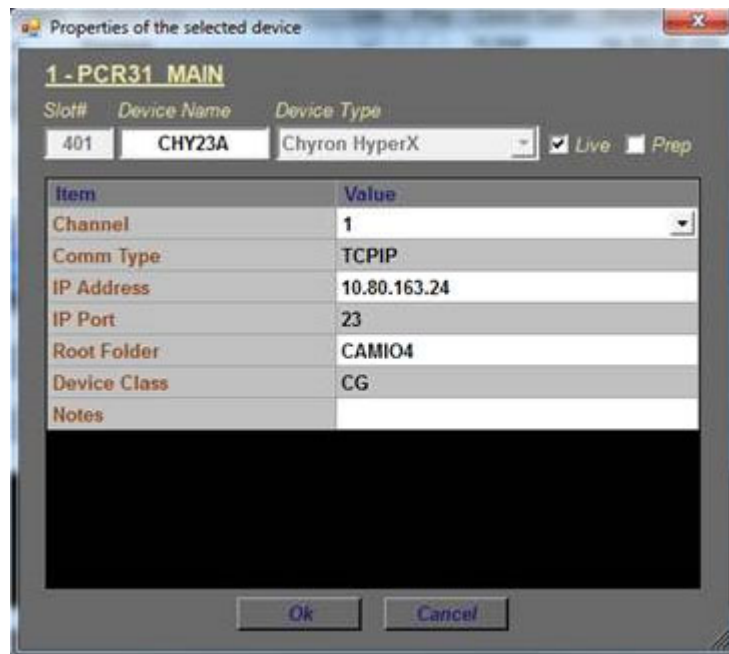
## CONFIGURATION NOTE 5

Timed Events is disabled by default. To enable Timed Events, check Timed Events check box during Ignite application installation wizard.

## CONFIGURATION NOTE 6

If the customer uses Chyron CG and upgrades to CAMIO4, perform the following steps:

1. Launch the Ignite application.
2. On the Event Timeline module, select **Setup | Configuration and Device Setup**.
3. Select Chyron in the Devices Configuration screen and click **Edit**. The **Properties of the selected device** dialog appears.
4. Enter the properties of the Chyron CG device. The Root Folder value should be set to **CAMIO4** in this release.

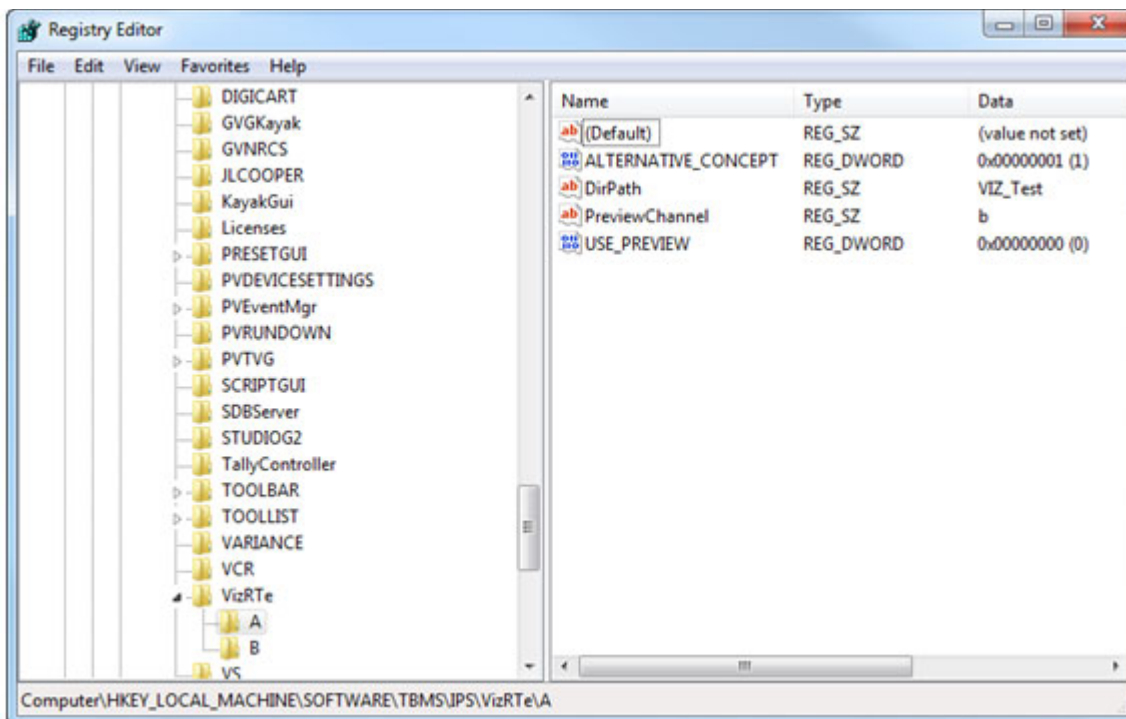


5. Click **OK**.

## CONFIGURATION NOTE 7

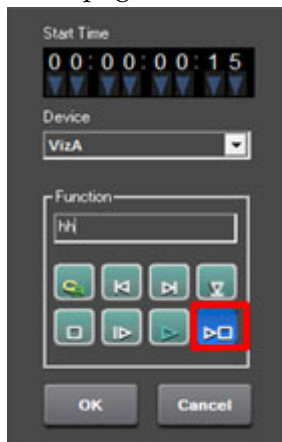
The support for VizRT Concept is disabled by default.

To enable it, add ALTERNATIVE\_CONCEPT parameter to registry as shown below. Set it to 1 and then only start Ignite. This is applicable to every channel.



To insert the Concept into Ignite, do the following:

1. In the CG hotkeys window, enter the correct path for profile and showname: **<Profile>/<ShowName>**
2. Open the TME page, and select the preload icon as shown below:



3. Enter the concept name in the **Function** text box.

4. Code your TME icon as below:



- a. The first icon from left is to change the concept.
- b. The middle icon is to load a CG.
- c. The last icon is to play a CG

