



grass valley
A **BELDEN** BRAND

IGNITE

LIVE PRODUCTION CONTROL SYSTEM

Release Notes

Software Version 10.1.1

13-0003-000
NOVEMBER 2017

—

Copyright and Trademark Notice

Copyright © 2017, Grass Valley Canada. All rights reserved.

Belden, Belden Sending All the Right Signals, and the Belden logo are trademarks or registered trademarks of Belden, Inc. or its affiliated companies in the United States and other jurisdictions. Grass Valley is a trademark or registered trademark of Grass Valley Canada. Belden, Inc., Grass Valley Canada, and other parties may also have trademark rights in other terms used herein.

Grass Valley Web Site

The Grass Valley Web (<http://www.grassvalley.com/support>) site offers the following:

Online User Documentation — Current versions of product catalogs, brochures, data sheets, ordering guides, planning guides, manuals, and release notes in .pdf format can be downloaded.

FAQ Database — Solutions to problems and troubleshooting efforts can be found by searching our Frequently Asked Questions (FAQ) database.

Software Downloads — Download software updates, drivers, and patches.

Grass Valley Technical Support

For technical assistance, contact our international support center, at 1-800-547-8949 (US and Canada) or +1 530 478 4148.

To obtain a local phone number for the support center nearest you, please consult the Contact Us section of Grass Valley's web site.

An online form for e-mail contact is also available from the web site.

Recycling

Visit www.grassvalley.com for recycling information.

—

Contents

- Ignite Release Notes** 7
 - Introduction 7
 - Release Summary 7
 - Enhanced Functionality 8
 - Playlist enhancements..... 8
 - Compatibility..... 9
 - Hardware 9
 - Software 10
 - Installation and Configuration 11
 - Considerations 11
 - Hardware Installation..... 11
 - Software Installation..... 11
 - New Installation..... 12
 - Upgrade Installation 12
 - Configuration Notes 13
 - Open Source Software Information 26
 - Apache..... 26
 - Microsoft Public License..... 27
 - MIT 28
 - Mozilla..... 29
 - NSubstitute..... 29

Ignite Release Notes

Introduction

This document describes compatibility, installation, and other information specific to Ignite Release 10.1.1 which is a minor release of the Ignite Live Production Control System.

Note For a current list of supported/controlled devices, contact an authorized Grass Valley reseller or contact Grass Valley sales directly.

Release Summary

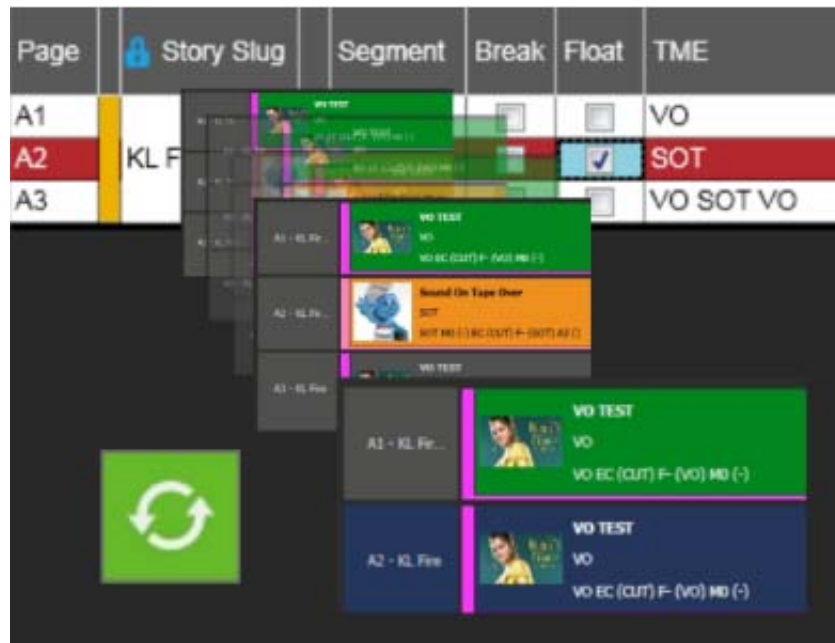
The Ignite 10.1.1 release includes new software enhancements as follows:

- [*Playlist enhancements on page 8*](#)

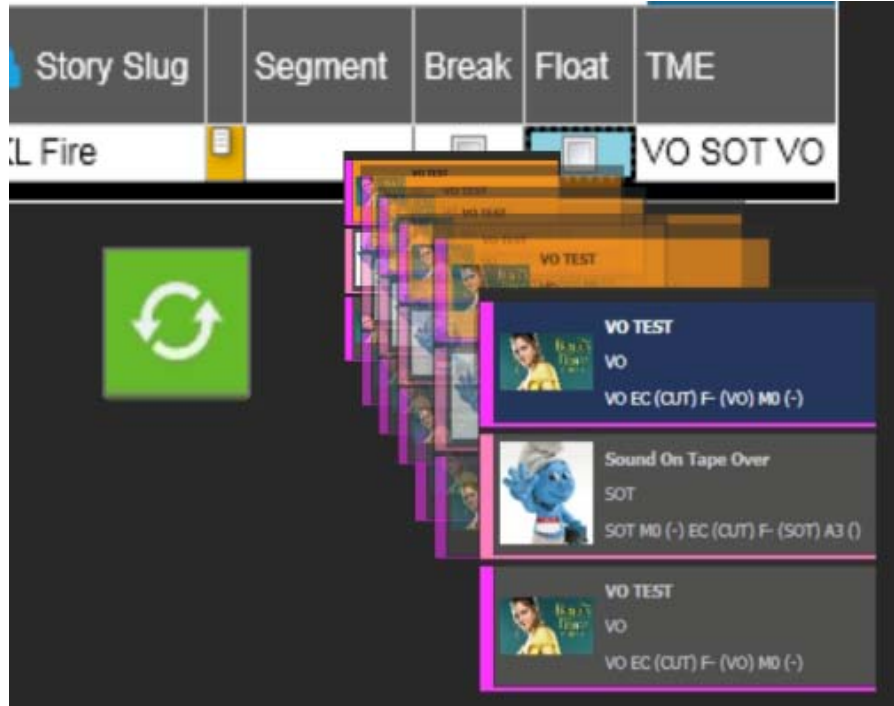
Enhanced Functionality

Playlist enhancements

- In the event where the last prepped TME is no longer available after accepting a rundown update, the cursor will relocate to the position after the last played (on-air) TME. As before, accepting a rundown update will relocate the cursor to the last prepped TME when it is available as part of the update again.



- When repeated TME appears in the same story, the timeline cursor will be relocated to the correct position of the last prepped TME. For example, import a rundown with repeated TME in the same story. Prep one of the duplicated TME and accept the rundown update. Ignite will relocate the timeline cursor to the last prepped TME.



Compatibility

Hardware

This release requires hardware equipped with Windows 64-bit operating system.

Software

This Ignite Release 10.1.1 only functions with the Media Object Portal (MOP) and does not support the XMOS server from previous systems. If a customer is being upgraded from any version of Ignite prior to:

- 5.2.0.0, you must run the AlloyConversionUtilities found in the Ignite installation folder
- 5.1.1, you must convert the customer's TME & Macro library with the the IgniteTMEProcessor found in the Ignite installation folder

Refer to the release matrix in [Table 1](#)

Table 1. Release Matrix

Category	Application	Version
Newsroom Computer Systems	ENPS Server	8.0.0.203
	ENPS Client	8.0.0.203
	iNEWS Server	5.6.0.6
	iNEWS Client	5.6.0.6
	iNEWS MOS Gateway	4.3.1.0
	Dalet Galaxy (TME column only)	4.0
Protocol	Automated Soft Panel (ASP)	10.1.1
	Ignite ActiveX	1.0.27
	Katalyst	2.1.5
	MOP Server	1.0.25
	MOS	2.8.3
	TME File Watcher	1.0.27
Audio Mixers	Calrec	Zeta 100
	Klotz	1.3.5.006
	Lawo	5.8.0.4
	SSL	5.0/5
	Studer	5.4.00a3
	Wheatstone	D8, D10, and Series 4
	Yamaha	1.35
Graphics Device	Chyron (Duet and HyperX)	8.0 (build 1558)
	Vertigo	5.4 SP3 (5.4.149.0).
	VizRT	3.1.1
	WASP3D	3.8.2
KONNECT	Kayenne Frame Firmware	4.2.2d01
	K-Frame Firmware	11.1.0
	K-Frame Deployment Tool	11.1.0
	K-Frame Menu	11.1.0
Video Server	K2 Summit	9.8.1.2528

Table 1. Release Matrix

Category	Application	Version
Others	Elemental	2.3.1.22369
	GV STRATUS	5.7.0.0
	Densité	GPI-1501 firmware version (1.0.0)
	MongoDb	3.4.6 (Community version)
	Android for Automation Soft Panel (ASP)	Android 6.0 (Marshmallow) or Android 7.0 (Nougat)

Installation and Configuration

Considerations

- Ignite 10.1.1 is not an update, but a full installation.
- Ignite 10.1.1 requires Microsoft .NET 4.6.1 and Microsoft Visual C++ Redistributable for VS 2015 Update 2.
- ScriptViewer is no longer sold with Ignite, but for upgrading customers, a corresponding ScriptViewer is available.
- With v10.1.1, desktop experience must be enabled otherwise graphics might be compromised.

Hardware Installation

Only qualified Grass Valley Service Engineers are authorized to install the Ignite Live Production Control System. Contact your local Grass Valley representative, your Grass Valley Ignite Technical Service representative, or Grass Valley Support Center.

Software Installation

Only qualified Grass Valley Service Engineers are authorized to install Ignite Live Production Control System Release 10.1.1 software. Contact your local Grass Valley representative, your Grass Valley Ignite Technical Service representative, or Grass Valley Support Center.

Installation has two parts:

- MOP server
- Ignite

New Installation

1. Run the IgniteMOPInstaller.msi for 1.0.25 on the MOP server.
2. Run the Ignite 10.1.1 Installer.exe on the Ignite workstation.
3. Select the feature set from installer options (Audio, Switcher Type, etc.) and finish the installation.

Upgrade Installation

MOP Server Upgrade

CAUTION It is imperative that you follow these instructions when UPGRADING to MOP Server 1.0.25 from a previous version.

Note This update requires more than just new software, but also has a database update component.

1. Stop all MOP services before the upgrade.
2. Manually uninstall MOP Server via Windows add/remove programs.
3. Run IgniteMOPInstaller.msi for 1.0.25 on the MOP server.
4. Launch the Ignite MOP Utility and select as below:
 - **Services > Start Services**
 - **Settings > Configure Database**
5. Ensure that the Database Version is 6 or less.

Note In the following step, the application might freeze for a few seconds, this is normal.

6. Under **Upgrade**, click **Upgrade Database**. When done, the:
 - Messages window displays **Upgrade complete**
 - Database Version displays **7**

Ignite Upgrade

Note If a customer is being upgraded, and is using different audio, or a different switcher (i.e. going from Klotz to Calrec, or Kayak to Kayenne), after restoring setups, you will need to restore some registry settings manually. Refer to http://grassvalleyautomation.com/wiki/index.php?title=Ignite_Restore for more information.

If a customer is upgrading from any version of Ignite prior to:

- 5.2.0.0, you must run the AlloyConversionUtilities found in the Ignite installation folder
 - 5.1.1, you must convert the customer's TME & Macro library with the the IgniteTMEProcessor found in the Ignite installation folder
1. Backup the GrassValley folder and the TBMS registry.
 2. Copy the Ignite_10.1.1_FullInstall folder to the C:\Software directory.
 3. Run the Ignite 10.1.1 Installer.exe to uninstall the previous version and backup configuration files.
 4. Take note of the name of the folder created in the D:\IgniteBackups folder.
 5. Run the Ignite 10.1.1 Installer.exe on the Ignite workstation.
 6. Select feature set from installer options (such as Audio, Switcher Type, etc.) and finish the installation.

Note Timed Events setting is disabled by default. To enable Timed Events, check Timed Events check box when it displays on the Ignite installation wizard.

Configuration Notes

CONFIGURATION NOTE 1

Note Always perform a backup of the entire TME library before running a conversion via IgniteTMEProcessor.

If a user is being upgraded and has any TMEs that addressed the ScriptViewer to append scripts and/or load CGs from the CG list, the TMEs must be converted.

In most cases, this is just a single TME (LP.tmx, LS.tmx, or something similar) that is embedded but if the customer uses multiple versions of this file type, all must be converted. Conversion is done via the IgniteTMEProcessor.exe in the root Ignite folder.

CONFIGURATION NOTE 2

- If a user is being upgraded and is not using ScriptViewer, or for any reason would prefer to not see the Miniviewer in the Ignite GUI, this must be modified in the registry.

```
HKEY_LOCAL_MACHINE\SOFTWARE\TBMS\IPS\SCRIPT-
GUI\MINIVIEWMODE
0 = No Miniviewer
```

1 = Miniviewer

- If the user is not using ScriptViewer, it is recommended that the SV row in the timeline track be removed and replaced with another track (e.g. CG, Kayak, Camera).
- If the user is not using ScriptViewer, in order to fill the space vacated by the Miniviewer module, it is recommended that the CG List GUI be changed to **Wide** mode from the Display Settings tab of the CG List Settings dialog box.

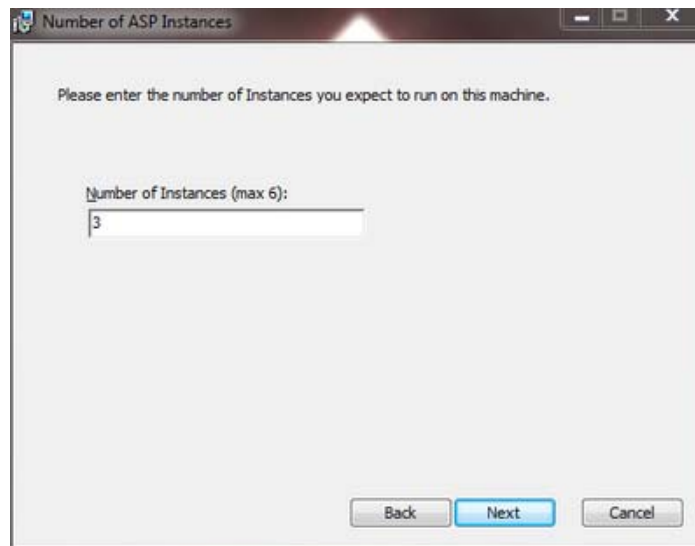
CONFIGURATION NOTE 3

You must install the Automation Soft Panel (ASP) driver in Ignite before installing the ASP in Windows and Android devices.

1. To get the ASP device into the Devices list in Ignite, run and install the Automation Soft Panel driver (version 2.1.5).

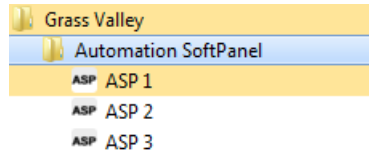
Note There is only one installer for both Katalyst and ASP, as the ASP driver is the same with the Katalyst driver.

2. To install ASP in Windows devices, download the ASP installer for Windows and run it.
3. When prompted, enter the number of ASP instances that you want to run in your system. A maximum of 6 simultaneous instances is supported by the installer.

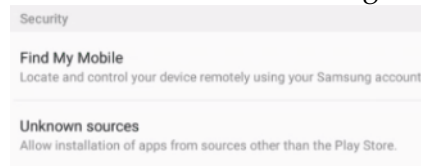


4. Click **Finish** to complete the installation.

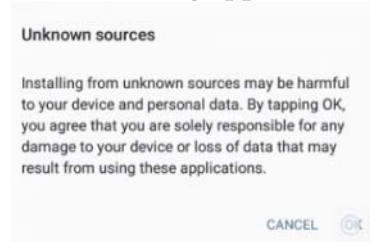
5. Click **Start | All Programs | Grass Valley | Automation Soft Panel** to launch an instance of the ASP.



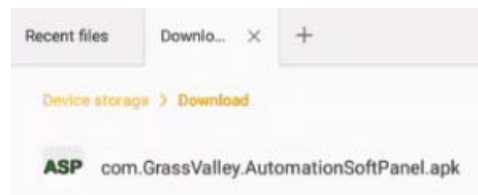
6. To install ASP on an Android device, configure the device to allow the installation of third party software as follows:
 - a. Go to the device's **Settings | Lock screen and security | Security**
 - b. Enable the **Unknown sources** setting.



- c. Tap **OK** when the dialog appears as below:



7. Download the Automation Soft Panel APK file to the Android device.
8. Open the file manager application of your choice and find the APK file.



9. Tap on it and then tap **Install** to commence the installation process.
10. Once installation is complete, the Automation Soft Panel will be accessible from the Apps drawer.

Note Just like with a Katalyst panel, Ignite connects to ASP devices when they are enabled in the current mode.

CONFIGURATION NOTE 4

For the delay operation with GPI16, a toggle is enabled in the registry to allow users to choose between ignoring the delay or waiting for the delay

to complete when a play command is hit while GPI16 is performing a delay.

1. Ensure you already upgraded your Ignite application.
2. Run this file at `C:\Program Files\GrassValley\Ignite\RegisterModules.exe`
3. Select “R” when prompted.
4. Navigate to `C:\Program Files\GrassValley\Ignite\MiscApps`
5. Select a file for the buffer command to be On or Off from the list below:
 - `GPI_16_BufferCommandsOff64.reg`
 - `GPI_16_BufferCommandsOn64.reg`
6. Double-click to execute the .reg file.

A prompt appears with this confirmation dialog: “Are you sure you want to continue?”

7. Click **Yes**.

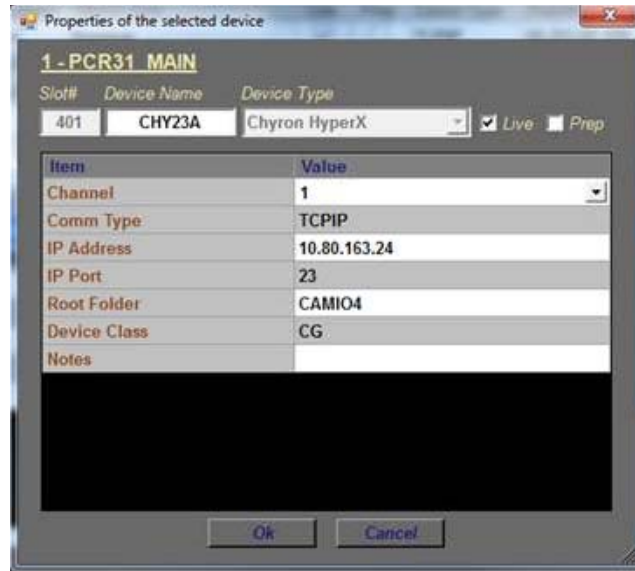
Note If Buffer Commands Off is selected, Ignite will execute the play command immediately and ignore the delay. If Buffer Commands On is selected, Ignite will execute the play command after the delay is complete.

CONFIGURATION NOTE 5

Ignite users with the latest Chyron HyperX driver or existing users with previous versions of the software suite must perform the following configuration in the Ignite device manager:

1. Launch the Ignite application.
2. On the Event Timeline module, select **Setup | Configuration and Device Setup**.
3. Select Chyron in the Devices Configuration screen and click **Edit**.

4. Enter the properties of the Chyron CG device. The Root Folder value should be set to **CAMIO4** if you have the latest Chyron HyperX driver.



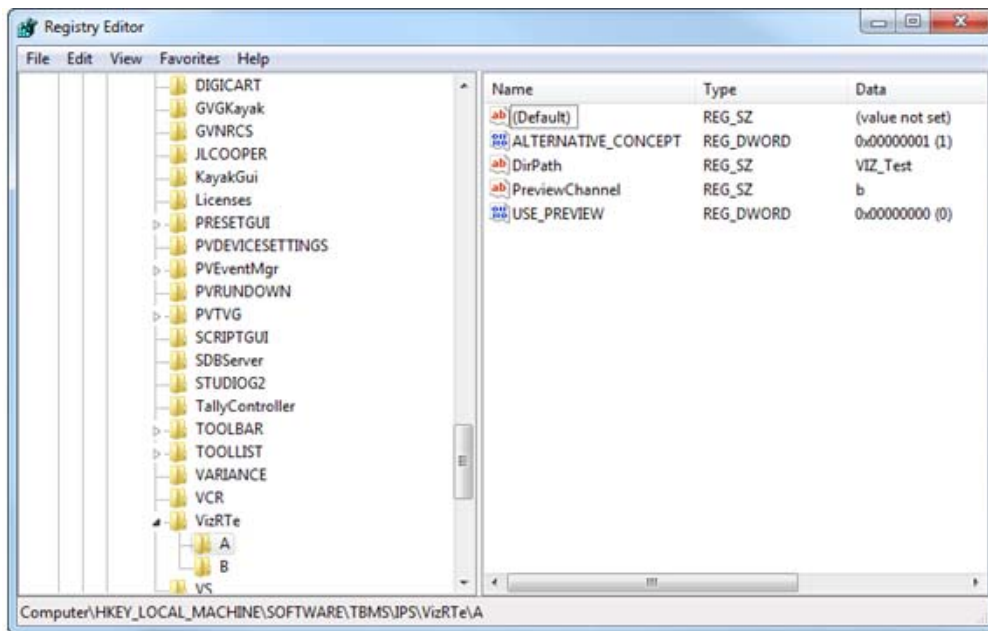
Note For users of CAMIO 3 or earlier, you can leave the Root Folder field blank by default or insert values depending on the version of Chyron software suite in use. Possible values for the root folder are CAMIO, CAMIO2, and CAMIO3.

5. Click **OK**.

CONFIGURATION NOTE 6

The support for VizRT Concept is disabled by default.

To enable it, add ALTERNATIVE_CONCEPT parameter to the registry as shown below. Set it to 1 and then only start Ignite. This is applicable to every channel.



To insert the Concept into Ignite, do the following:

1. In the CG hotkeys window, enter the correct path for profile and showname: **<Profile>/<ShowName>**
2. Open the TME page, and select the preload icon as shown below:



3. Enter the concept name in the **Function** text box.

4. Code your TME icon as below:

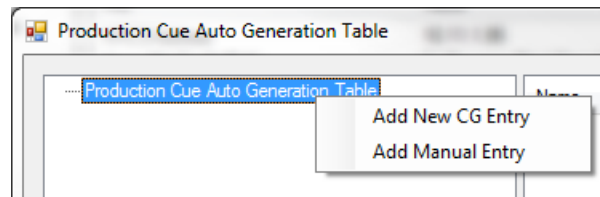


- a. The first icon from left is to change the concept.
- b. The middle icon is to load a CG.
- c. The last icon is to play a CG.

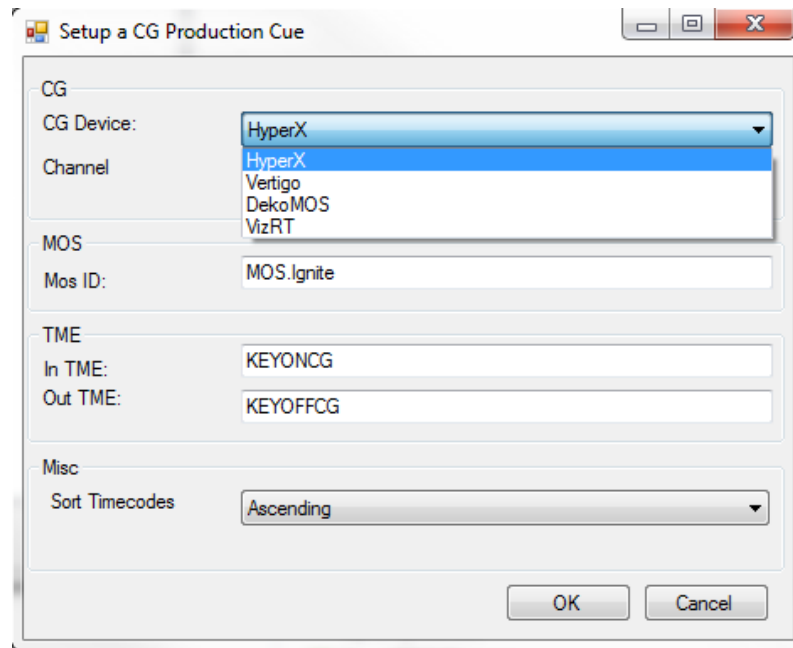
CONFIGURATION NOTE 7

To setup a CG production cue for VizRT, please do the following:

1. Go to *C:\Program Files\GrassValley\Ignite* and launch *IQConfigurator.exe* from the directory.
2. In the IQ Configurator, select **Tools | Production Cue Auto - generation** to open the Production Cue Auto Generation table.
3. Right-click on the table and select **Add New CG Entry** to launch the **Setup a CG Production Cue** window.



4. Select **VizRT** as the CG Device and configure the CG production cue for your operation.



CONFIGURATION NOTE 8

The support of tri-monitor display for Ignite application is on 16:9 monitors by default.

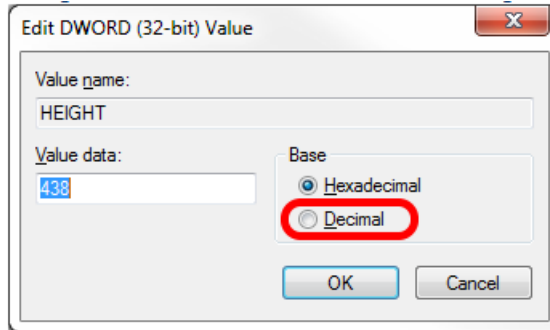
For customers with 4:3 monitors, screen setting values must be manually modified in the registry.

- For KONNECT screen, edit values as shown in the location below:

HKEY_LOCAL_MACHINE\SOFTWARE\TBMS\IPS\Switcher

ab (Default)	REG_SZ	(value not set)
HEIGHT	REG_DWORD	0x00000438 (1080)
LEFT	REG_DWORD	0x00000a00 (2560)
TOP	REG_DWORD	0x00000000 (0)
WIDTH	REG_DWORD	0x00000500 (1280)

Switch to decimal base in the registry for easy reference.



- For Ignite middle screen, edit values as shown in the location below:

HKEY_LOCAL_MACHINE\SOFTWARE\TBMS\IPS\STUDIOG2

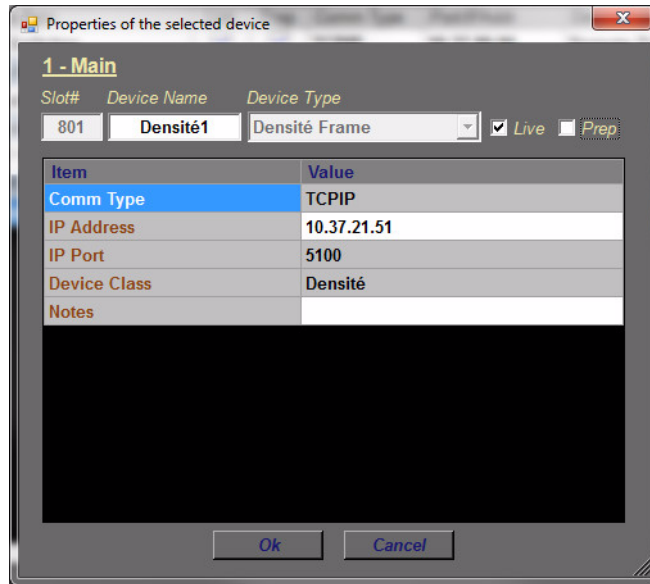
LBN_DISPLAY_LEFT	REG_DWORD	0x00000280 (640)
LBN_DISPLAY_TOP	REG_DWORD	0x000002bc (700)

CONFIGURATION NOTE 9

To use the Densité Frame with GPI-1501 card for Tally control, the following configuration must be done in the Ignite device manager:

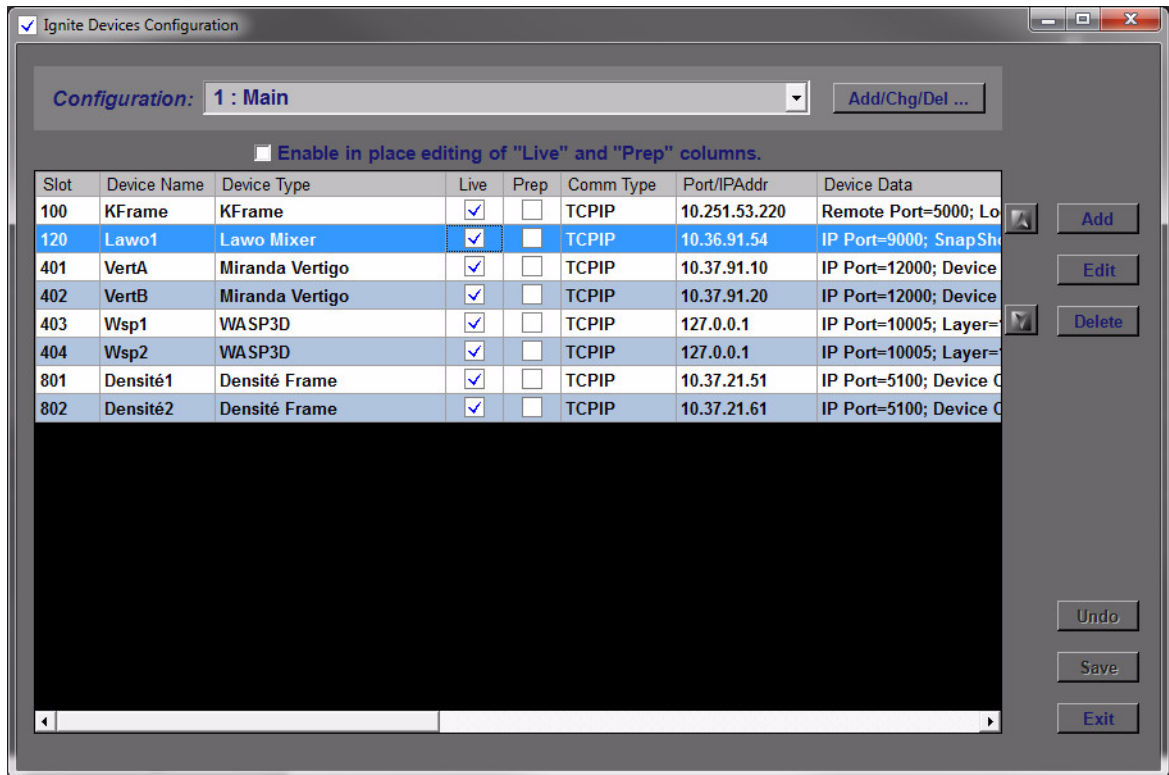
1. Launch the Ignite application.
2. On the Event Timeline module, select **Setup | Configuration and Device Setup**.

3. Select **Densité Frame** as the Device Type and enter device properties as below:



4. Click **OK**.

If needed, you can also connect to more than one Densité Frame in order to access additional GPI-1501 cards.



5. Click **Exit**.
6. Navigate to *C:\Program Files\GrassValley\Ignite\misc\DeviceData*

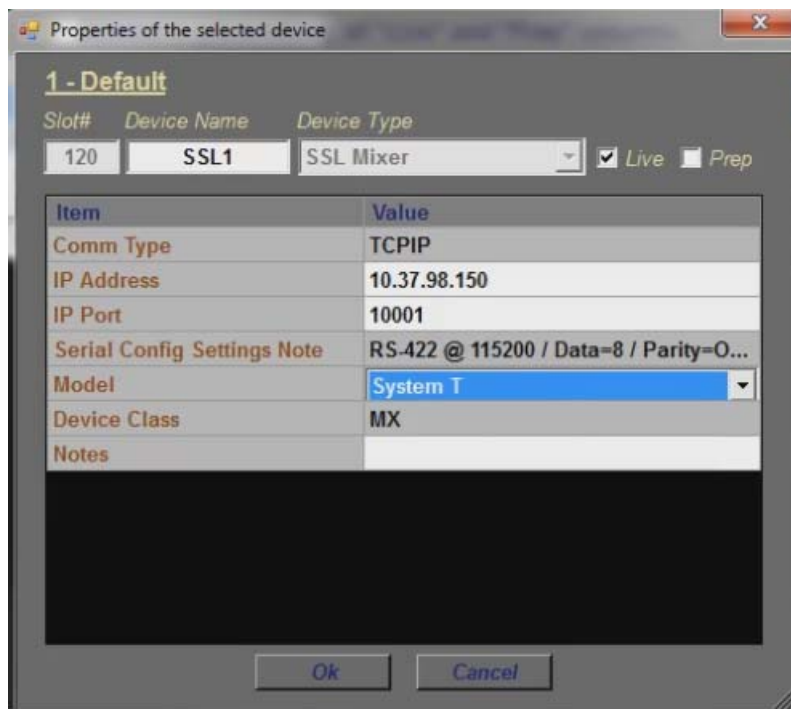
7. Open the **TallyConfiguration.xml** file from the location above and edit the configuration with your text editor.
8. You can map up to 64 Tally outputs (GPOs) and 32 Tally inputs (GPIs) to Densité Frame-Slot-Pin sets.

Note If upgrading from Videoframe to Densité Frame, there is no need to rebuild the event library provided that Ignite GPI/O addresses are mapped to Densité locations.

CONFIGURATION NOTE 10

To include the SSL System T Audio mixer in your operation, the following configuration must be done in the Ignite device manager:

1. Launch the Ignite application.
2. On the Event Timeline module, select **Setup | Configuration and Device Setup**.
3. Select properties for the device as follows:
 - a. Device Type: **SSL Mixer**
 - b. Model: **System T**
4. Enter other properties as shown below:



Note The IP Port automatically changes to reflect the default port for System T or C10HD as one model or the other is selected from the drop-down list.

5. Click OK.

CONFIGURATION NOTE 11

To include the Wheatstone Series 4 audio mixer in your operation, the following configuration must be done in the Ignite device manager:

1. Launch the Ignite application.
2. On the Event Timeline module, select **Setup | Configuration and Device Setup**.
3. Select properties of the device as follows:
 - a. Device Type: **Wheatstone**
 - b. Wheatstone Mixer Model: **Series 4**
4. Enter other properties as shown below:



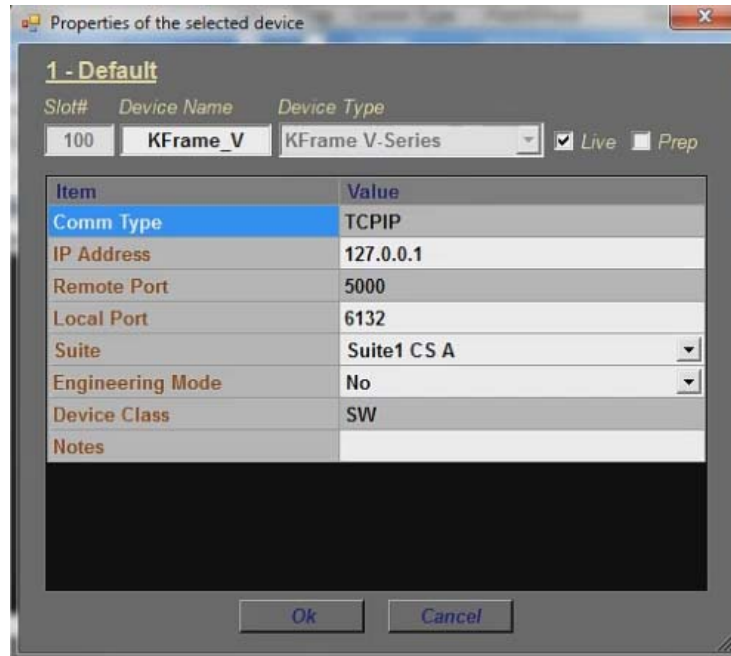
5. Click OK.

CONFIGURATION NOTE 12

To include the K-Frame V-Series switcher in your operation, the following configuration must be done in the Ignite device manager:

1. Launch the Ignite application.

2. On the Event Timeline module, select **Setup | Configuration and Device Setup**.
3. Select Device Type: **KFrame V Series**.
4. Enter properties of the K-Frame V-Series switcher as below:



5. Click **OK**.

Open Source Software Information

For instructions on how to obtain a copy of any source code being made publicly available by Grass Valley related to software used in this Grass Valley product you may send your request in writing to:

**Grass Valley
Open Source Software Management
3499 Douglas-B-Floreani, QC
Canada**

Or email your request to:

ossManagement@grassvalley.com

This document contains additional information regarding licenses, acknowledgments and required copyright notices for open source packages used in this Grass Valley product.

The software components listed below are used by Grass Valley's products.

Apache

License

Apache 2.0

Copyright Text

This product includes software developed by

The Apache Software Foundation (<http://www.apache.org/>).

The Windows Installer is built with the Nullsoft Scriptable Install System (NSIS), which is open source software. The original software and related information is available at <http://nsis.sourceforge.net>.

Java compilation software for JSP pages is provided by Eclipse, which is open source software. The original software and related information is available at

<http://www.eclipse.org>.

Microsoft Public License

License

Microsoft Public License 1.0 (Ms-PL 1.0)

Copyright Text

Microsoft Public License (Ms-PL)

This license governs use of the accompanying software. If you use the software, you accept this license. If you do not accept the license, do not use the software.

1. Definitions

The terms “reproduce,” “reproduction,” “derivative works,” and “distribution” have the same meaning here as under U.S. copyright law.

A “contribution” is the original software, or any additions or changes to the software.

A “contributor” is any person that distributes its contribution under this license.

“Licensed patents” are a contributor’s patent claims that read directly on its contribution.

2. Grant of Rights

(A) Copyright Grant- Subject to the terms of this license, including the license conditions and limitations in section 3, each contributor grants you a non-exclusive, worldwide, royalty-free copyright license to reproduce its contribution, prepare derivative works of its contribution, and distribute its contribution or any derivative works that you create.

(B) Patent Grant- Subject to the terms of this license, including the license conditions and limitations in section 3, each contributor grants you a non-exclusive, worldwide, royalty-free license under its licensed patents to make, have made, use, sell, offer for sale, import, and/or otherwise dispose of its contribution in the software or derivative works of the contribution in the software.

3. Conditions and Limitations

(A) No Trademark License- This license does not grant you rights to use any contributors’ name, logo, or trademarks.

(B) If you bring a patent claim against any contributor over patents that you claim are infringed by the software, your patent license from such contributor to the software ends automatically.

(C) If you distribute any portion of the software, you must retain all copyright, patent, trademark, and attribution notices that are present in the software.

(D) If you distribute any portion of the software in source code form, you may do so only under this license by including a complete copy of this license with your distribution. If you distribute any portion of the software in compiled or object code form, you may only do so under a license that complies with this license.

(E) The software is licensed "as-is." You bear the risk of using it. The contributors give no express warranties, guarantees or conditions. You may have additional consumer rights under your local laws which this license cannot change. To the extent permitted under your local laws, the contributors exclude the implied warranties of merchantability, fitness for a particular purpose and non-infringement.

MIT

License

MIT License (MIT)

Copyright Text

The MIT License (MIT)

Permission is hereby granted, free of charge, to any person obtaining a copy of this software and associated documentation files (the "Software"), to deal in the Software without restriction, including without limitation the rights to use, copy, modify, merge, publish, distribute, sublicense, and/or sell copies of the Software, and to permit persons to whom the Software is furnished to do so, subject to the following conditions:

The above copyright notice and this permission notice shall be included in all copies or substantial portions of the Software.

THE SOFTWARE IS PROVIDED "AS IS", WITHOUT WARRANTY OF ANY KIND, EXPRESS OR IMPLIED, INCLUDING BUT NOT LIMITED TO THE WARRANTIES OF MERCHANTABILITY, FITNESS FOR A PARTICULAR PURPOSE AND NONINFRINGEMENT. IN NO EVENT

SHALL THE AUTHORS OR COPYRIGHT HOLDERS BE LIABLE FOR ANY CLAIM, DAMAGES OR OTHER LIABILITY, WHETHER IN AN ACTION OF CONTRACT, TORT OR OTHERWISE, ARISING FROM, OUT OF OR IN CONNECTION WITH THE SOFTWARE OR THE USE OR OTHER DEALINGS IN THE SOFTWARE.

Mozilla

License

Mozilla Public License 2.0 (MPL 2.0)

Copyright Text

This Source Code Form is subject to the terms of the Mozilla Public License, v. 2.0. If a copy of the MPL was not distributed with this file, you can obtain one at <http://mozilla.org/MPL/2.0/>.

NSubstitute

License

BSD License

Copyright Text

Redistribution and use in source and binary forms, with or without modification, are permitted provided that the following conditions are met:

1. Redistributions of source code must retain the above copyright notice, this list of conditions and the following disclaimer.
2. Redistributions in binary form must reproduce the above copyright notice, this list of conditions and the following disclaimer in the documentation and/or other materials provided with the distribution.

THIS SOFTWARE IS PROVIDED BY THE COPYRIGHT HOLDERS AND CONTRIBUTORS "AS IS" AND ANY EXPRESS OR IMPLIED WARRANTIES, INCLUDING, BUT NOT LIMITED TO, THE IMPLIED WARRANTIES OF MERCHANTABILITY AND FITNESS FOR A PARTICULAR PURPOSE ARE DISCLAIMED. IN NO EVENT SHALL THE COPYRIGHT

HOLDER OR CONTRIBUTORS BE LIABLE FOR ANY DIRECT, INDIRECT, INCIDENTAL, SPECIAL, EXEMPLARY, OR CONSEQUENTIAL DAMAGES (INCLUDING, BUT NOT LIMITED TO, PROCUREMENT OF SUBSTITUTE GOODS OR SERVICES; LOSS OF USE, DATA, OR PROFITS; OR BUSINESS INTERRUPTION) HOWEVER CAUSED AND ON ANY THEORY OF LIABILITY, WHETHER IN CONTRACT, STRICT LIABILITY, OR TORT (INCLUDING NEGLIGENCE OR OTHERWISE) ARISING IN ANY WAY OUT OF THE USE OF THIS SOFTWARE, EVEN IF ADVISED OF THE POSSIBILITY OF SUCH DAMAGE.